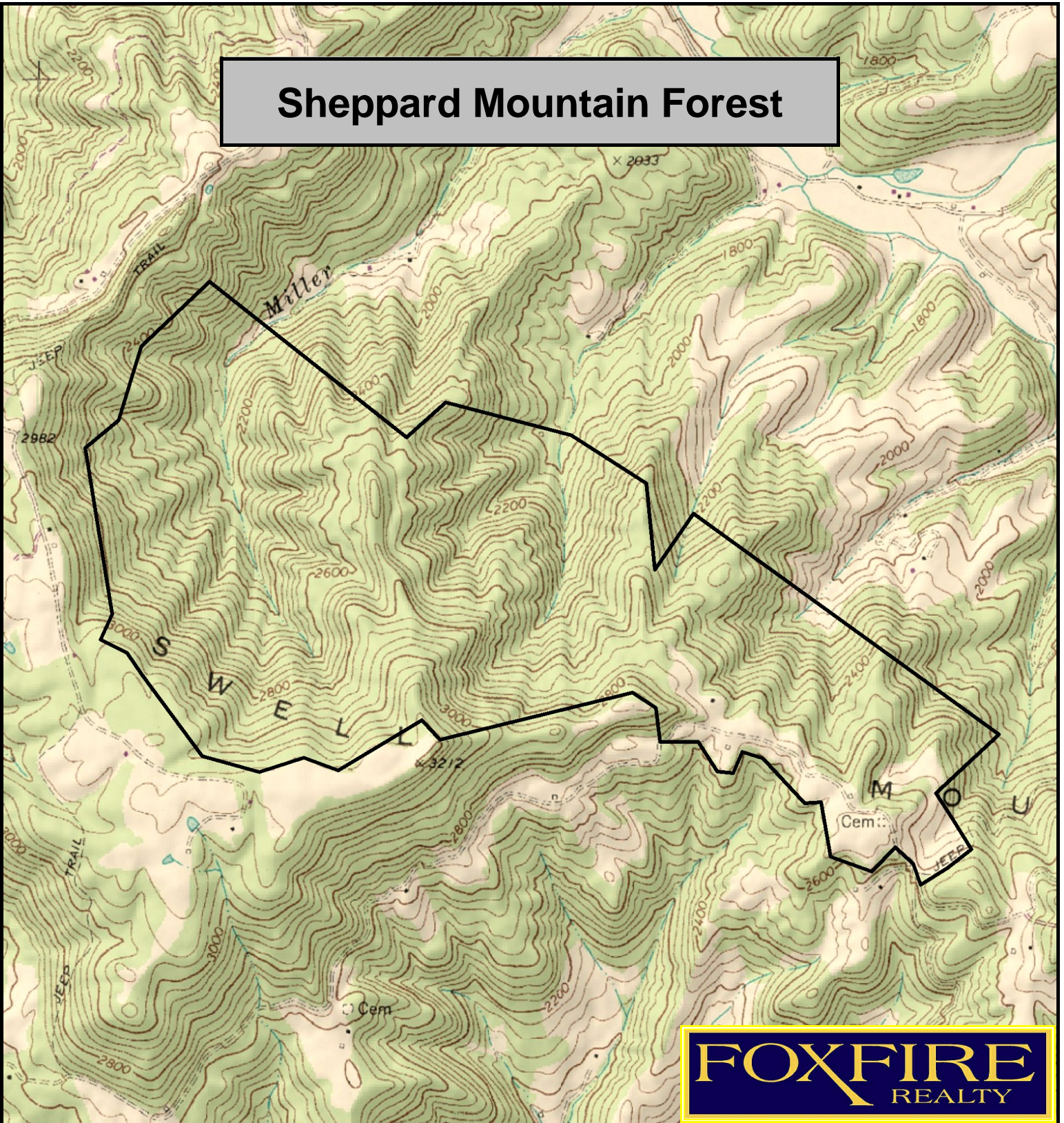


# Sheppard Mountain Forest



**FOXFIRE**  
REALTY

Sheppard Mountain Forest, Summers County, WV  
TOPOGRAPHIC MAP  
Elevation Range: 1980' - 3108' +/-  
Google Coordinates: LAT 37.769528 (N), LON -80.801290 (W)  
This map is for general location purposes only. Consult a licensed land  
surveyor for actual boundary location and acreage.  
PROPERTY DEPICTION IS AN ESTIMATION OF BOUNDARY LOCATION.

**RICHARD GRIST, Broker - Auctioneer - Forester**  
304.646.8837 Richard@Foxfirenation.com  
[WWW.FOXFIRENATION.COM](http://WWW.FOXFIRENATION.COM)

FOR TOPO MAP

SCALE 1:18000

1 INCH = 1,500 FT.

0 1000 2000 3000 4000 5000 6000  
Feet

0 1  
Mile

