



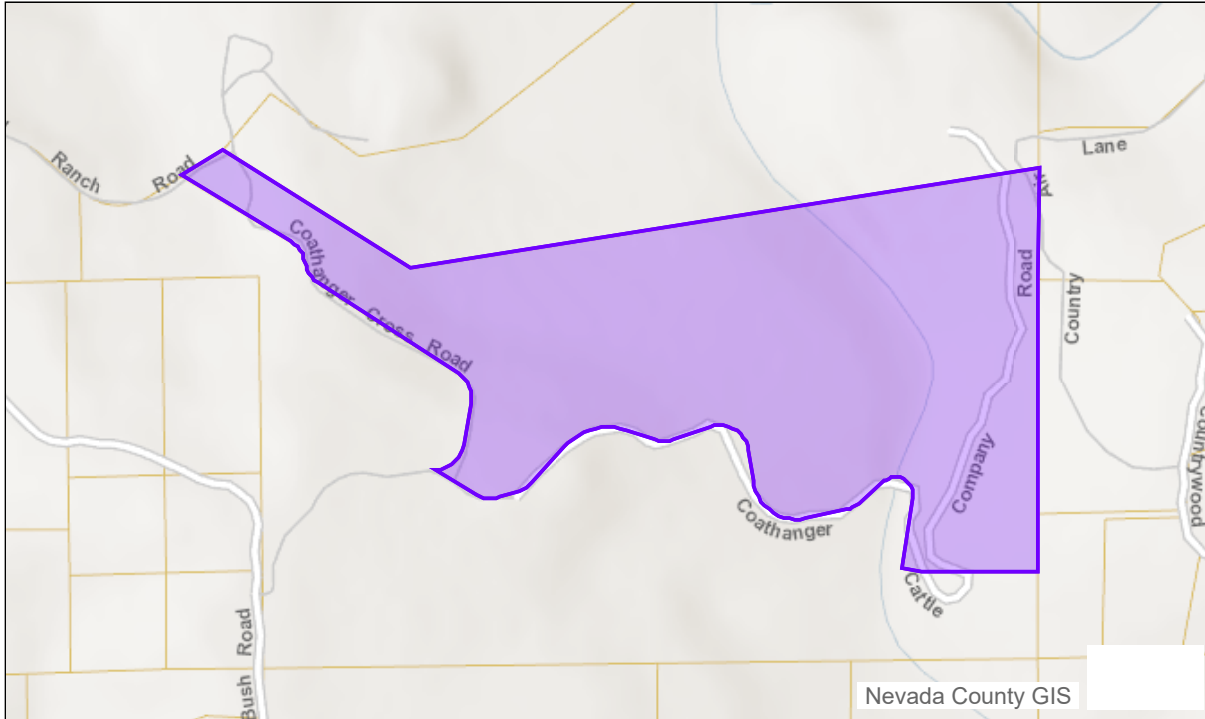
# County of Nevada

Nevada County, CA Parcel Report  
Data current as of: 11/6/2022

Description: The Parcel Report displays information from a variety of sources – Assessor, Building, Code Enforcement, Environmental Health, and Planning departments to list a few. The report is maintained by the County GIS Division.

Search by Assessor's Parcel Number (APN): **034-370-006-000**

[Search](#)



[View Assessor's Parcel Map PDF](#)

## Site Information

## Property Details

## Districts

## Permits

## Unrecorded Maps

### Site Address

17447 COATHANGER CATTLE CO ROAD  
17769 COATHANGER CROSS ROAD

### Jurisdiction

NEVADA COUNTY

### Legal Description

PCL 4 PM 18/236

### Parcel Maps

Book 18 Page 236

### Property Summary

Assessor's Parcel Number	Acreage	Land Value	Improvement Value	Tax Rate Area
<a href="#">034-370-006-000</a>	47.86	\$336,600.00	\$0.00	<a href="#">068-005</a>

### Property Context

Zoning	Zoning District Map	General Plan	Census Tract	Census Block Group	Max Elevation	Ground Snow Load (lbs/sqft)	Climate Zone	Wind Exposure
<a href="#">AG-20</a>	<a href="#">64</a>	<a href="#">RUR-20</a>	<a href="#">8.01</a>	<a href="#">2</a>	2,896	54	<a href="#">11</a>	<a href="#">C</a>