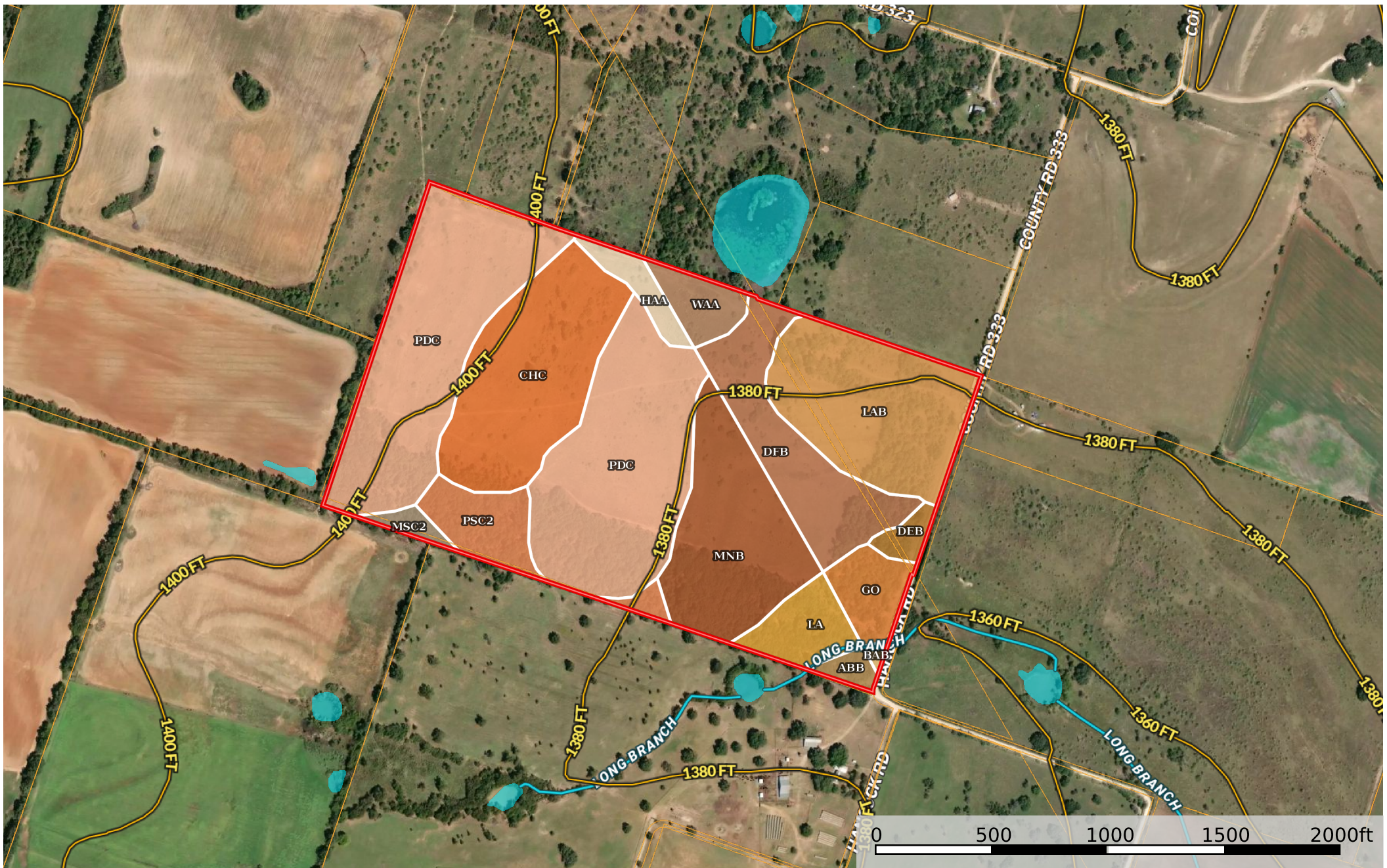


Texas, AC +/-



Boundary Stream, Intermittent River/Creek Water Body

|  Boundary 82.97 ac

SOIL CODE	SOIL DESCRIPTION	ACRES	%	CPI	NCCPI	CAP
PdC	Pedernales loamy fine sand, 1 to 5 percent slopes	28.89	34.82	0	46	3e
ChC	Chaney loamy sand, 1 to 5 percent slopes	11.55	13.92	0	37	3e
LaB	Topsey loam, 1 to 3 percent slopes	10.73	12.93	0	41	3e
MnB	Menard fine sandy loam, calcic, 1 to 3 percent slopes	9.71	11.7	0	51	2e
DfB	Duffau fine sandy loam, 1 to 3 percent slopes	7.64	9.21	0	46	3e
PsC2	Pedernales fine sandy loam, 1 to 5 percent slopes, moderately eroded	3.54	4.27	0	44	3e
La	Lamkin clay loam, occasionally flooded	2.72	3.28	0	51	2w
Go	Gowen clay loam, occasionally flooded	2.38	2.87	0	55	2w
WaA	Hassee fine sandy loam, 0 to 1 percent slopes	1.95	2.35	0	31	3w
HaA	Hassee loam, 0 to 1 percent slopes	1.44	1.74	0	31	3w
DeB	Denton silty clay, 1 to 3 percent slopes	0.88	1.06	0	43	3e
AbB	Abilene loam, 1 to 3 percent slopes	0.69	0.83	0	52	2e
MsC2	Menard soils, 1 to 5 percent slopes, eroded	0.68	0.82	0	44	3e
BaB	Blanket clay loam, 1 to 3 percent slopes	0.17	0.2	0	55	2e
TOTALS		82.97(*)	100%	-	44.43	2.81









(*) Total acres may differ in the second decimal compared to the sum of each acreage soil. This is due to a round error because we only show the acres of each soil with two decimal.

Capability Legend

Increased Limitations and Hazards

Decreased Adaptability and Freedom of Choice Users

Land, Capability

								
	1	2	3	4	5	6	7	8
'Wild Life'	•	•	•	•	•	•	•	•
Forestry	•	•	•	•	•	•	•	
Limited	•	•	•	•	•	•	•	
Moderate	•	•	•	•	•	•		
Intense	•	•	•	•	•			
Limited	•	•	•	•				
Moderate	•	•	•					
Intense	•	•						
Very Intense	•							

Grazing Cultivation

(c) climatic limitations (e) susceptibility to erosion

(s) soil limitations within the rooting zone (w) excess of water