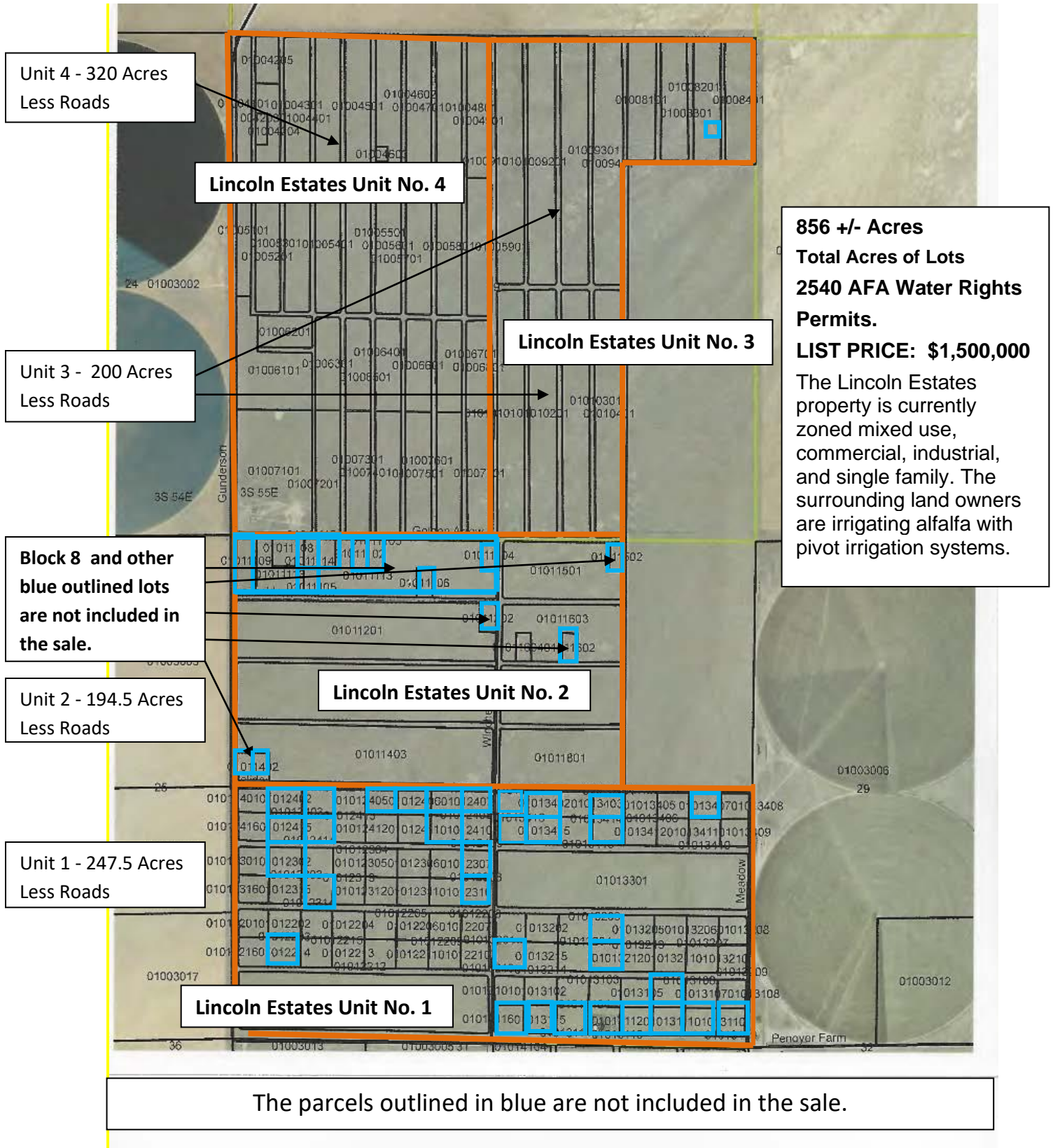


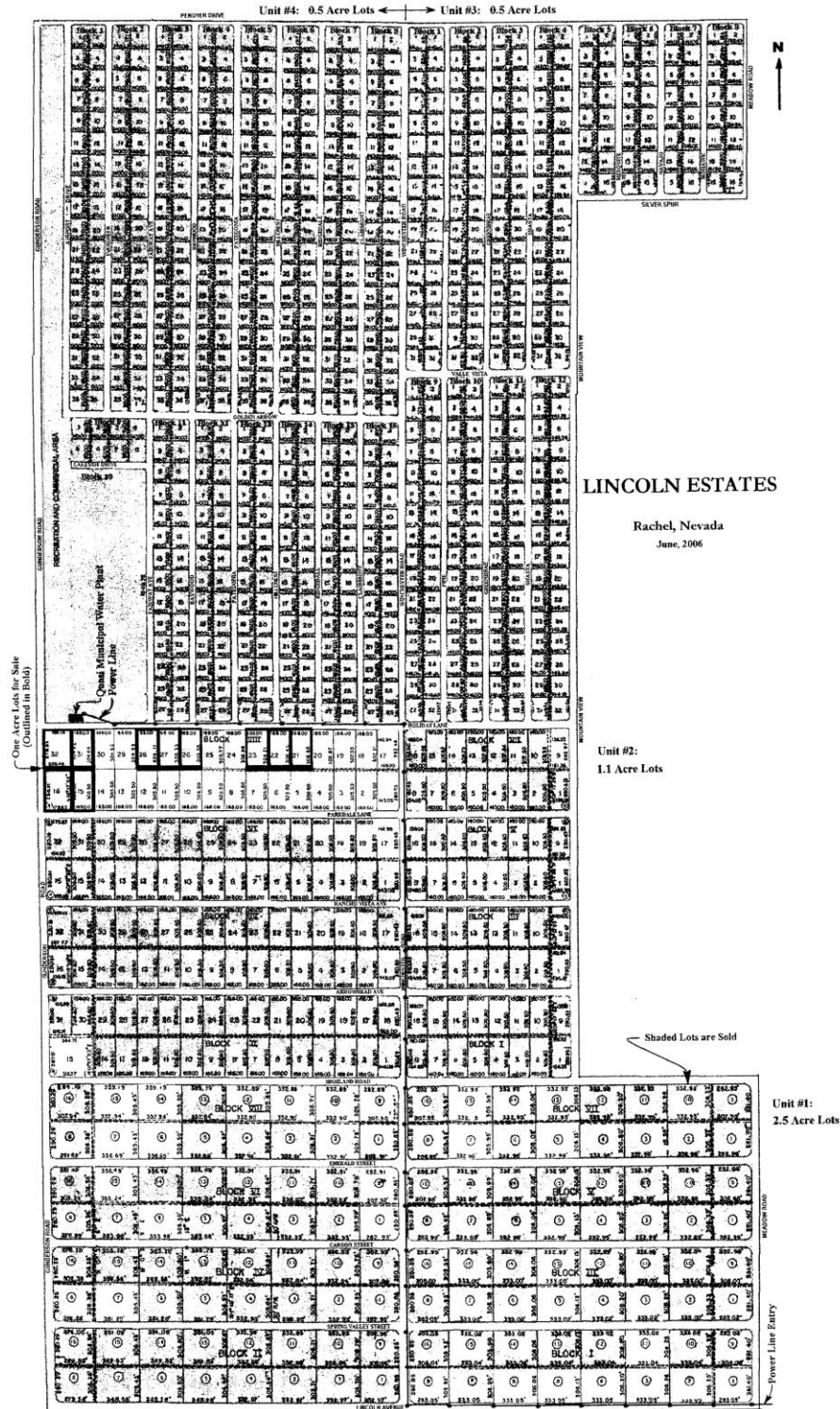
Lincoln Estates



This information has been secured from sources we believe to be reliable, but we make no representations or warranties, expressed or implied, as to the accuracy of the information.
 Buyer must verify the information and bears all risk for any inaccuracies.
 Jan Cole, land-water.com, 702-270-9194

Lincoln Estates

Unit 1 is subdivided into 2.5 acre lots. Unit 2 into 1 acre lots. Unit 3 and Unit 4 into .5 acre lots.

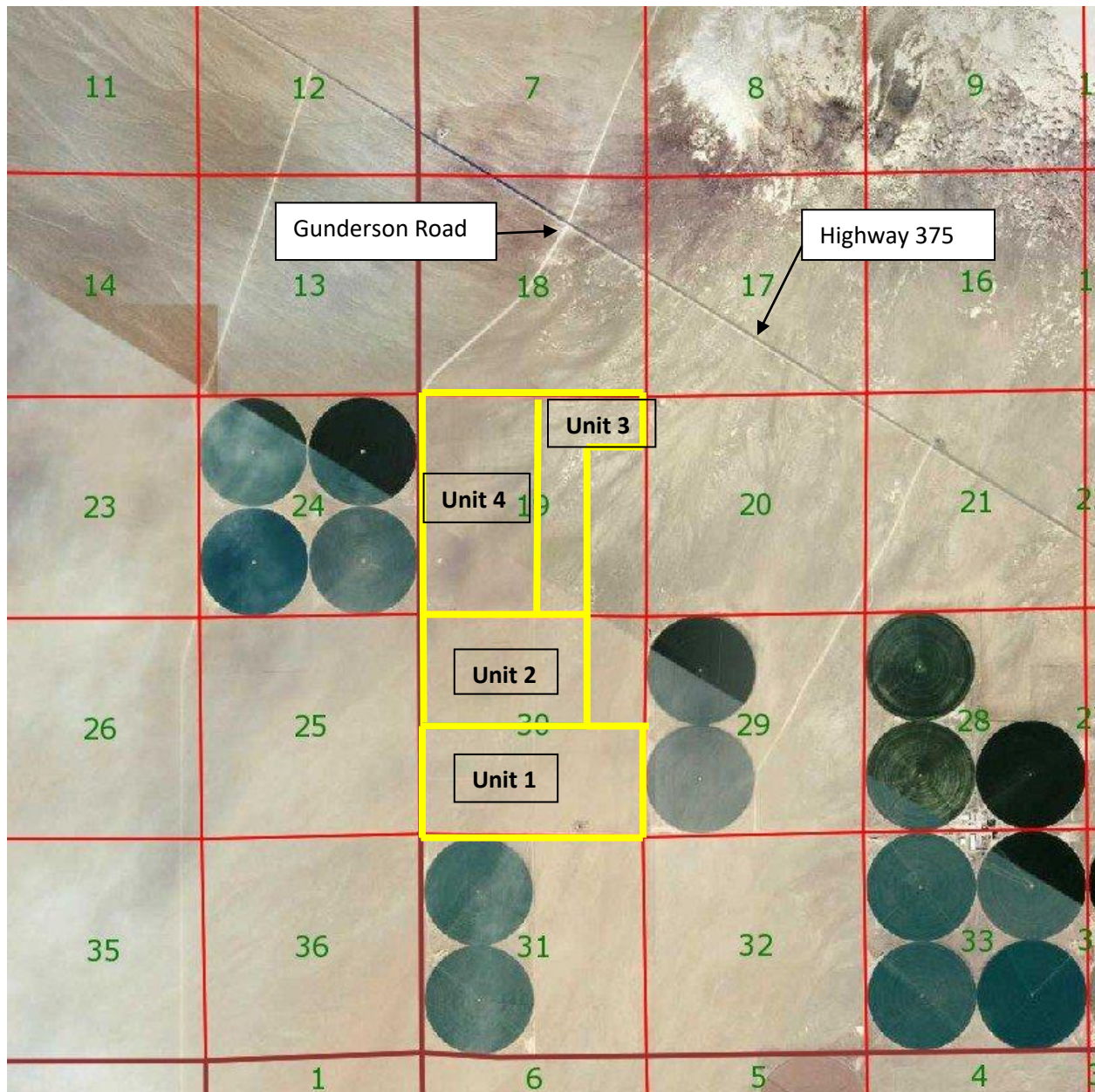


This information has been secured from sources we believe to be reliable, but we make no representations or warranties, expressed or implied, as to the accuracy of the information.

Buyer must verify the information and bears all risk for any inaccuracies.

Jan Cole, land-water.com, 702-270-9194

Lincoln Estates



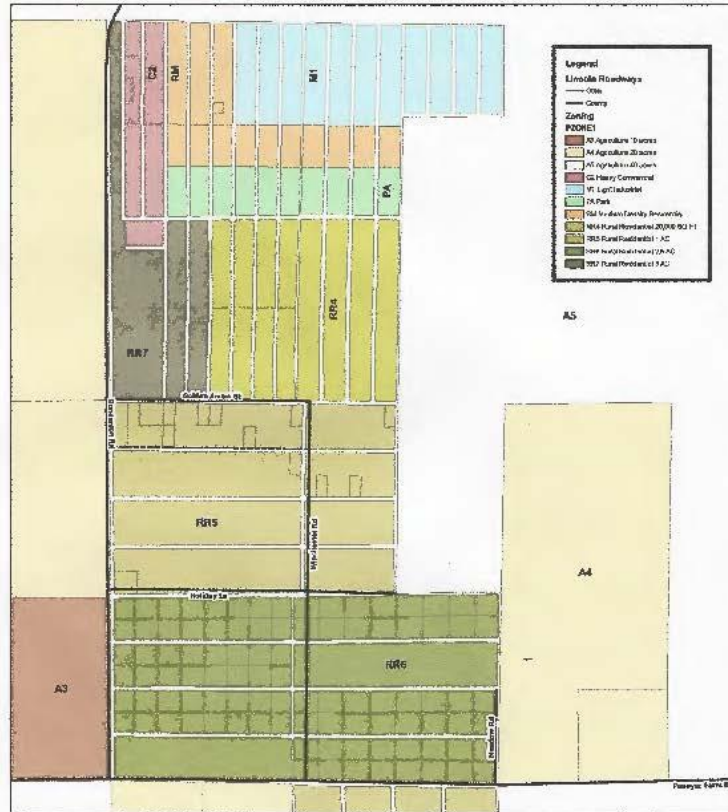
The neighboring property owners are irrigating alfalfa with pivot irrigation systems.

Lincoln Estates has easy access off of Highway 375.

Gunderson Road is a well maintained gravel road.

Lincoln Estates

RACHEL LINCOLN ESTATES ZONING



0 600 1,200 2,400 3,600 4,800 Feet



September 22, 2008



Lincoln Estates



Viewing East



Viewing North on Gunderson Road

This information has been secured from sources we believe to be reliable, but we make no representations or warranties, expressed or implied, as to the accuracy of the information.
Buyer must verify the information and bears all risk for any inaccuracies.
Jan Cole, land-water.com, 702-270-9194

Lincoln Estates



Rachel, Nevada

Rachel, Nevada is located along Highway 375. Rachel has a restaurant/bar/motel. The town is located at the southern end of the Sand Springs Valley, a bowl-shaped valley about twenty-five miles wide. The children are transported by bus to attend school in Alamo, NV.

In and around this little town, alfalfa is grown and cattle are raised. Western history buffs may want to explore the mountains surrounding Rachel. Inquire locally for directions – the friendly folks at Rachel invite everyone to explore their town and the surrounding area.



Lodging

Little A'Le'Inn: 775-729-2515

Web site: www.littlealeinn.com

Restaurants

Little A'Le'Inn: 775-729-2515

Emergency Numbers

Lincoln County Sheriff: 775-962-5151

Fire Department, and community
ambulance: 911

G.C. Dils Medical Center, Caliente:
775-726-3171

Nevada Highway Patrol: Dial Operator
and ask for Zenith 1-2000

Lincoln County Transportation Bus:
775-728-4477

Lincoln County Official Website:

This information has been secured from sources we believe to be reliable, but we make no representations or warranties, expressed or implied, as to the accuracy of the information.

Buyer must verify the information and bears all risk for any inaccuracies.

Jan Cole, land-water.com, 702-270-9194

Lincoln Estates

<http://www.lincolncountynv.org/>



Lincoln County, Nevada is a land filled with mountain ranges, windswept valleys, wild horses, cattle ranches and folks that like the country life.

Lincoln County – Get Primitive – Visitor Website:

<http://lincolncountynevada.com>

Lincoln County has 6 of Nevada's 12 State Parks:

Recreational Opportunities

- Six of Nevada's twelve state parks are located in Lincoln County.
- Two of the state parks in Lincoln County have lakes stocked with fish.
- Lincoln County Recreation Link: <http://lincolncountynevada.com/>
- Links to State Parks in Lincoln County:
 - <http://parks.nv.gov/parks/beaver-dam-state-park/>
 - <http://parks.nv.gov/parks/cathedral-gorge/>
 - <http://parks.nv.gov/parks/echo-canyon-state-park/>
 - <http://parks.nv.gov/parks/elgin-schoolhouse-state-historic-site/>
 - <http://parks.nv.gov/parks/kershaw-ryan-state-park/>
 - <http://parks.nv.gov/parks/spring-valley-state-park/>
- Big game, small game, and bird hunting are available in Lincoln and White Pine counties.
- One of Nevada's largest off-road vehicle trail systems, Silver State Trail, is in Lincoln County. Hundreds of miles of trails are open to public recreation for off-road vehicles, mountain bikes, horseback riding, and hiking
- The region hosts large off-road events drawing recreationalists nationally and internationally.
- The region has an interesting history of mining and ranching with numerous mining ghost towns.
- Only 2 % of Lincoln County is privately owned. 98% of Lincoln County is federal land. Most of the federal lands are open to recreational use.

This information has been secured from sources we believe to be reliable, but we make no representations or warranties, expressed or implied, as to the accuracy of the information.

Buyer must verify the information and bears all risk for any inaccuracies.

Jan Cole, land-water.com, 702-270-9194