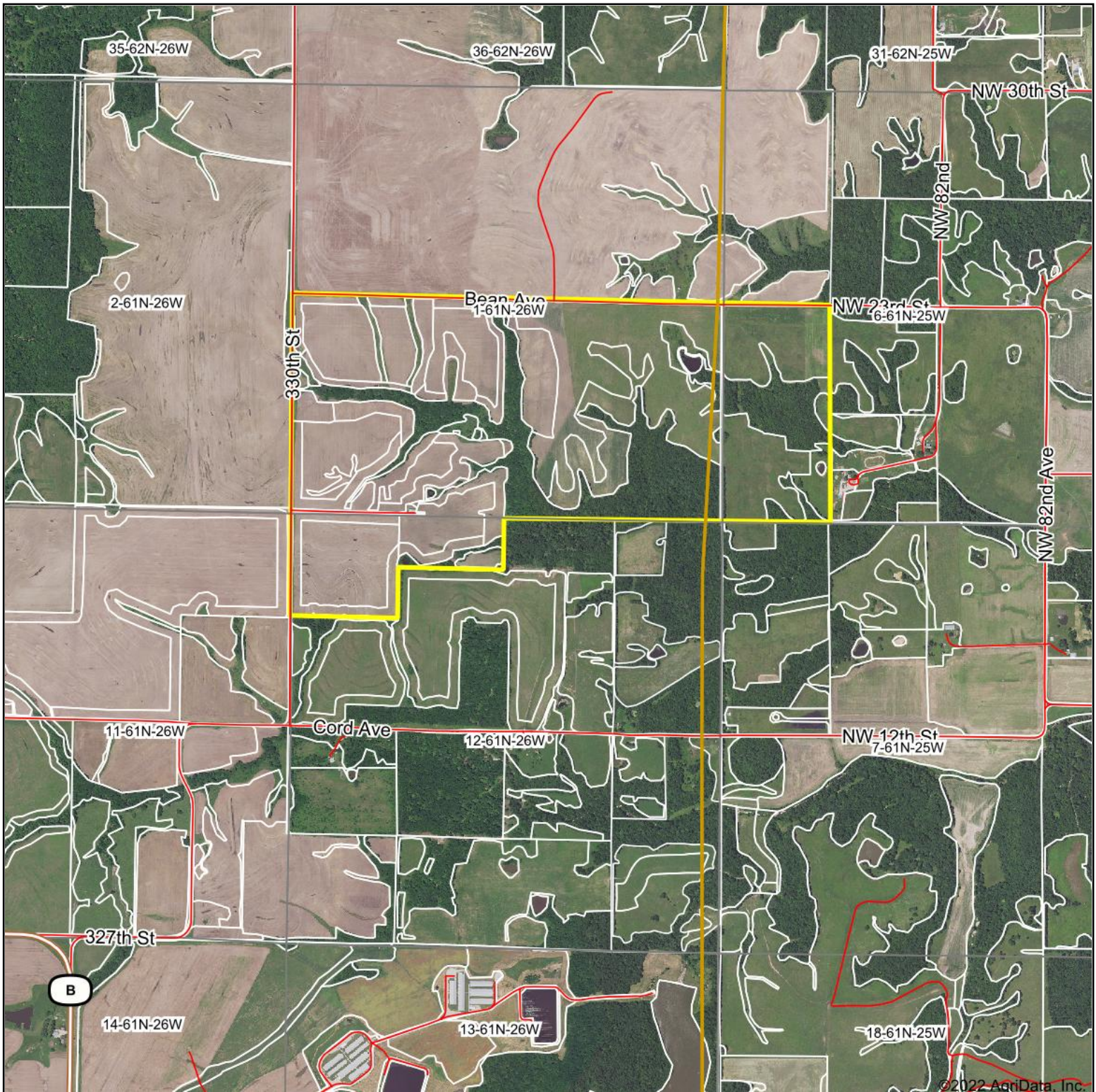


Aerial Map



Map Center: 40° 6' 10.16, -93° 46' 18.13

0ft 1907ft 3813ft

United Country
Property
Solutions, LLC

12-61N-26W
Daviess County
Missouri



Maps Provided By:
surety
CUSTOMIZED ONLINE MAPPING
© AgriData, Inc. 2021 www.AgriDataInc.com

Field borders provided by Farm Service Agency as of 5/21/2008.