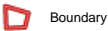
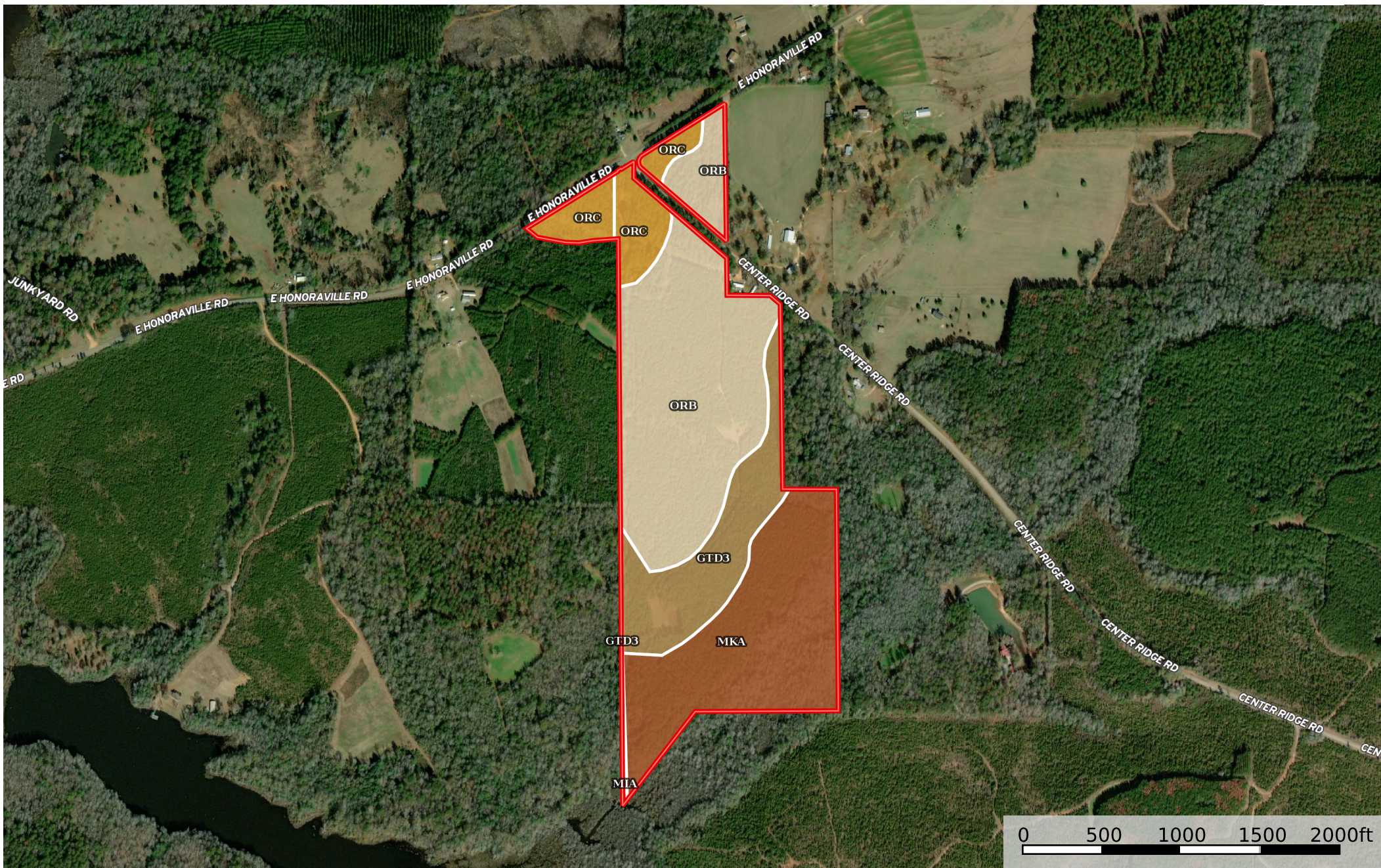


Honoraville Timber Investment and Hunting Tract -  
Butler County, Alabama, 92 AC +/-



|  All Polygons 92.82 ac

SOIL CODE	SOIL DESCRIPTION	ACRES	%	CPI	NCCPI	CAP
OrB	Orangeburg sandy loam, 2 to 5 percent slopes	39.72	42.79	0	67	2e
MKA	Mantachie, Kinston and luka soils, 0 to 1 percent slopes, frequently flooded	28.88	31.11	0	60	5w
GtD3	Greenville clay loam, 8 to 15 percent slopes, severely eroded	14.98	16.14	0	68	6e
OrC	Orangeburg sandy loam, 5 to 8 percent slopes	8.83	9.51	0	66	3e
MIA	Mantachie, Bibb, and luka soils, 0 to 1 percent slopes, frequently flooded	0.41	0.44	0	70	5w
TOTALS		92.83(*)	100%	-	64.89	3.69

(\*) Total acres may differ in the second decimal compared to the sum of each acreage soil. This is due to a round error because we only show the acres of each soil with two decimal.

|  Boundary 87.07 ac

SOIL CODE	SOIL DESCRIPTION	ACRES	%	CPI	NCCPI	CAP
OrB	Orangeburg sandy loam, 2 to 5 percent slopes	35.48	40.75	0	67	2e
MKA	Mantachie, Kinston and luka soils, 0 to 1 percent slopes, frequently flooded	28.88	33.17	0	60	5w
GtD3	Greenville clay loam, 8 to 15 percent slopes, severely eroded	14.98	17.2	0	68	6e
OrC	Orangeburg sandy loam, 5 to 8 percent slopes	7.32	8.41	0	66	3e
MIA	Mantachie, Bibb, and luka soils, 0 to 1 percent slopes, frequently flooded	0.41	0.47	0	70	5w
TOTALS		92.83(*)	100%	-	64.78	3.78

(\*) Total acres may differ in the second decimal compared to the sum of each acreage soil. This is due to a round error because we only show the acres of each soil with two decimal.

|  Boundary 5.75 ac

SOIL CODE	SOIL DESCRIPTION	ACRES	%	CPI	NCCPI	CAP
OrB	Orangeburg sandy loam, 2 to 5 percent slopes	4.24	73.61	0	67	2e
OrC	Orangeburg sandy loam, 5 to 8 percent slopes	1.51	26.22	0	66	3e
TOTALS		92.83(*)	100%	-	66.62	2.26









(\*) Total acres may differ in the second decimal compared to the sum of each acreage soil. This is due to a round error because we only show the acres of each soil with two decimal.

## Capability Legend

Increased Limitations and Hazards

Decreased Adaptability and Freedom of Choice Users

Land, Capability

								
	1	2	3	4	5	6	7	8
'Wild Life'	•	•	•	•	•	•	•	•
Forestry	•	•	•	•	•	•	•	
Limited	•	•	•	•	•	•	•	
Moderate	•	•	•	•	•	•		
Intense	•	•	•	•	•			
Limited	•	•	•	•				
Moderate	•	•	•					
Intense	•	•						
Very Intense	•							

## Grazing Cultivation

(c) climatic limitations (e) susceptibility to erosion

(s) soil limitations within the rooting zone (w) excess of water