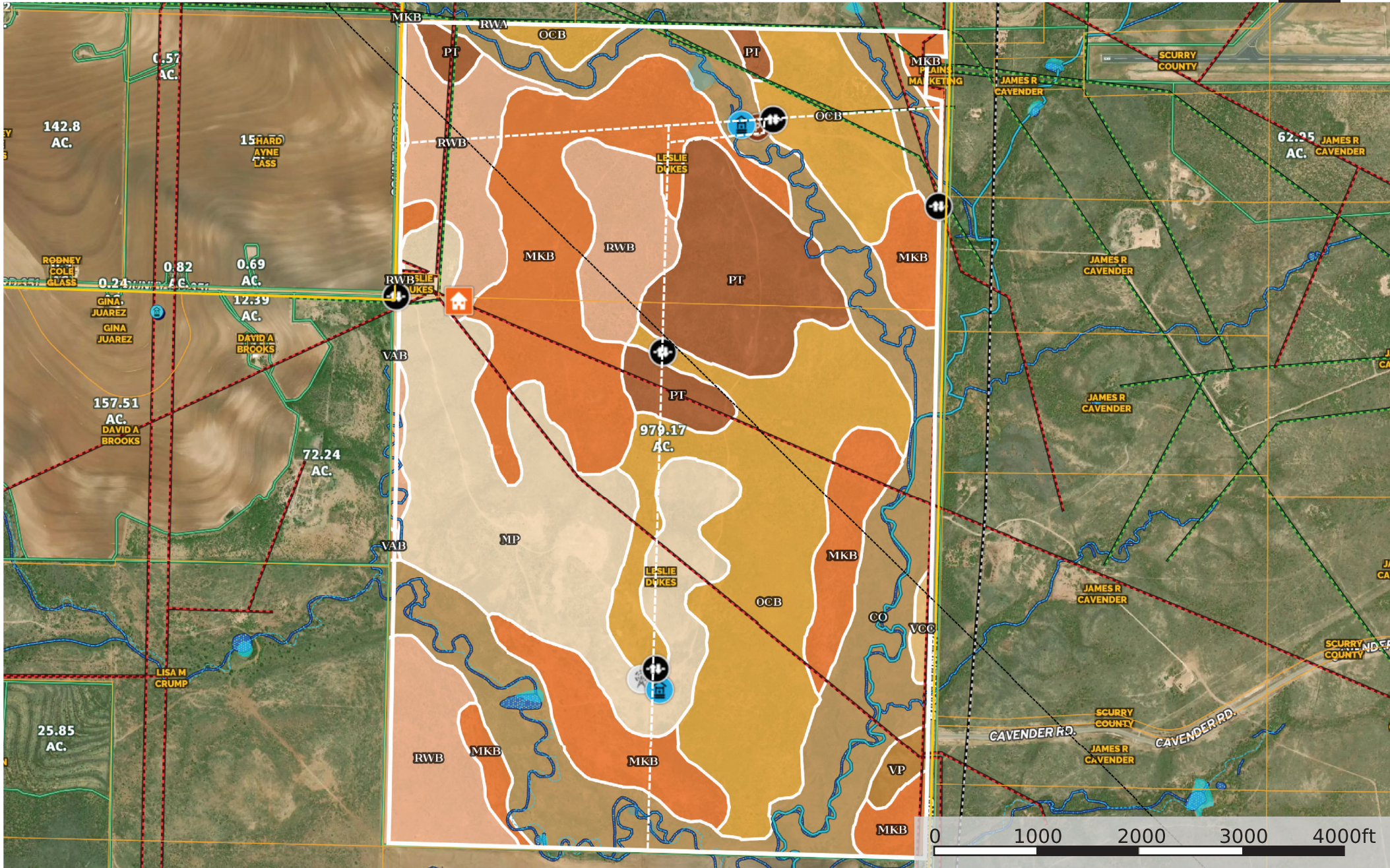


958 ac Scurry County  
Scurry County, Texas, 958 AC +/-



- House
- Gate
- Well
- Pens
- Windmill
- Primary Road
- Transmission Line
- Fence
- Pond / Tank
- Boundary
- Wetlands
- Riparian
- Stream, Intermittent
- River/Creek
- Water Body
- Crude Oil
- Natural Gas
- Other
- Water Wells