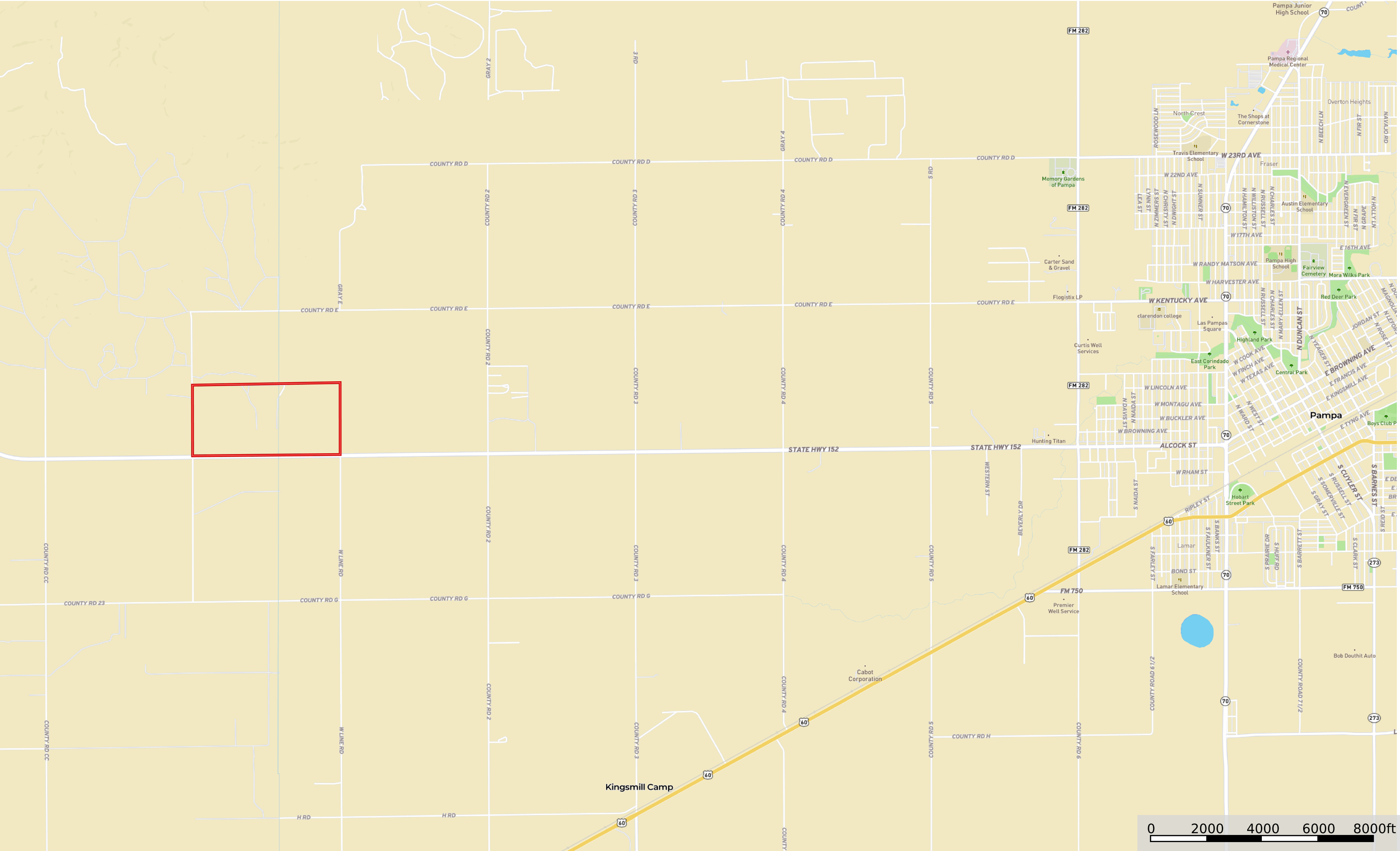
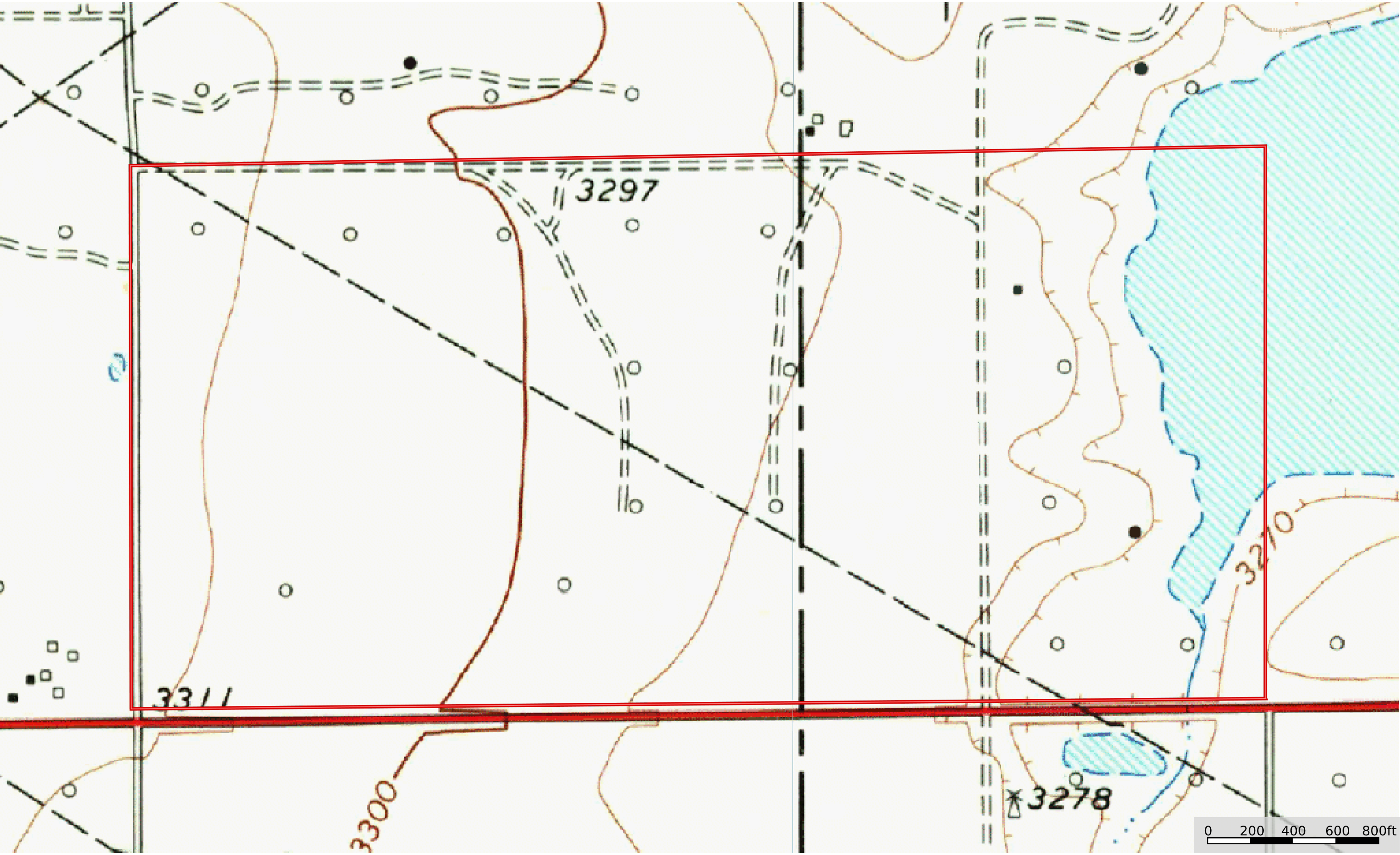





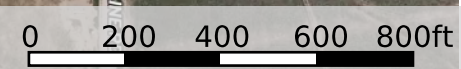
320 Acres



320 Acres



 320 Acres



| 320 Acres 318.04 ac

SOIL CODE	SOIL DESCRIPTION	ACRES	%	CPI	NCCPI	CAP
PuB	Pullman clay loam, 1 to 3 percent slopes	107.59	33.83	0	46	3e
PuA	Pullman clay loam, 0 to 1 percent slopes	83.79	26.35	0	46	3e
PxA	Pantex silty clay loam, 0 to 1 percent slopes	40.36	12.69	0	47	3e
PcB	Estacado clay loam, 1 to 3 percent slopes	39.23	12.34	0	49	3e
Ra	Randall clay, 0 to 1 percent slopes, occasionally ponded	27.06	8.51	0	17	6w
EcB	Estacado clay loam, 1 to 3 percent slopes	19.87	6.25	0	49	3e
MaD	Mansker clay loam, 5 to 8 percent slopes	0.14	0.04	0	43	6e
TOTALS		318.02(*)	100%	-	44.22	3.26

(\*) Total acres may differ in the second decimal compared to the sum of each acreage soil. This is due to a round error because we only show the acres of each soil with two decimal.

## Capability Legend

Increased Limitations and Hazards

Decreased Adaptability and Freedom of Choice Users

Land, Capability

	1	2	3	4	5	6	7	8
'Wild Life'	•	•	•	•	•	•	•	•
Forestry	•	•	•	•	•	•	•	
Limited	•	•	•	•	•	•	•	
Moderate	•	•	•	•	•	•		
Intense	•	•	•	•	•			
Limited	•	•	•	•				
Moderate	•	•	•					
Intense	•	•						
Very Intense	•							

## Grazing Cultivation

(c) climatic limitations (e) susceptibility to erosion

(s) soil limitations within the rooting zone (w) excess of water