



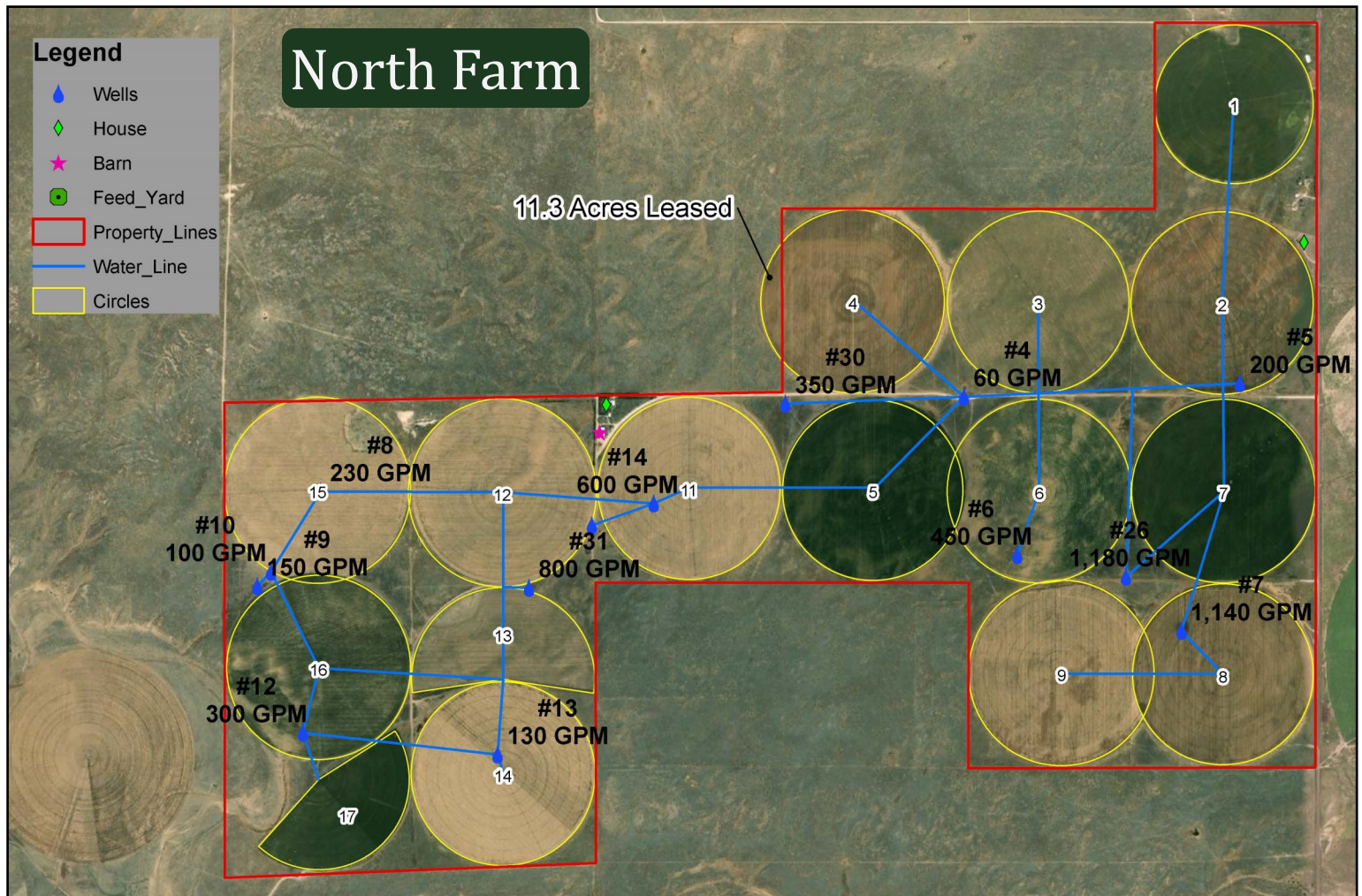
## RLF Clayton Farms North & Feedlot Farm

*Offered for Sale at \$15,182,450*

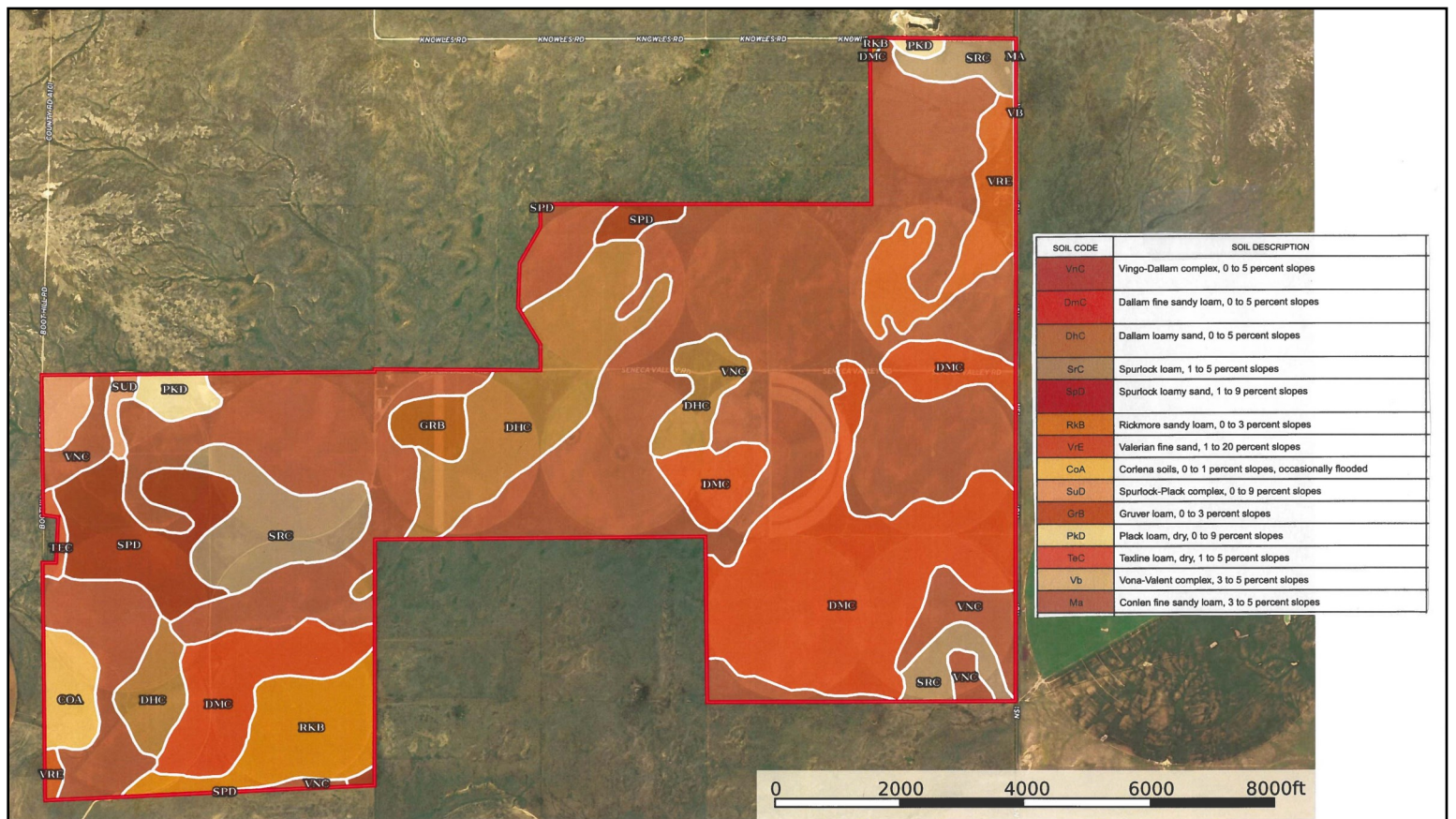
# 3,043 ± Acre Irrigated Farm Clayton, New Mexico











The North Farm consists of 2,313 ± acres, plus an approximately seven acre tract located three miles west of this farm. This small tract includes grain storage bins for 742,500 bushels and truck scales.

Fifteen irrigation wells and 16 pivot sprinkler systems provide the water for 1,802 irrigated acres. There are two houses and one shop on this farm.

The eastern property line runs along NS 1 Rd, which is the New Mexico / Oklahoma state line.

Latitude: 36.584412; Longitude: -103.016232

RLF Clayton Farm - North Farm							
Circle #	Year	Towers	Manufacturer	Irr Acres	Well #		GPM 2022 Q2
1	2011	7	Reinke	87	4	Submersible	60
2	2010	8	Reinke	124	5	Submersible	200
3	2011	8	Reinke	124	6	125 hsp Vertical Hollow Shaft Motor	450
4	2011	8	Reinke	124	7	125 hsp Vertical Hollow Shaft Motor	1,140
5	2010	8	Reinke	121	8	125 hsp Vertical Hollow Shaft Motor	230
6	1996	8	Reinke	120	9	125 hsp Vertical Hollow Shaft Motor	150
7	2011	8	Reinke	124	10	Submersible	100
8	2010	8	Reinke	117	11	200 hsp Vertical Hollow Shaft Motor	750
9	2010	8	Reinke	121	12	200 hsp Vertical Hollow Shaft Motor	300
11	2011	8	Reinke	122	13	75 hsp Vertical Hollow Shaft Motor	130
12	1996	8	Reinke	124	14	125 hsp Vertical Hollow Shaft Motor	600
13	1996	8	Reinke	63	15	150 hsp Vertical Hollow Shaft Motor	480
14	2011	8	Reinke	124	26	200 hsp Vertical Hollow Shaft Motor	1,180
15	2011	8	Reinke	123	30	150 hsp Vertical Hollow Shaft Motor	350
16	1995	8	Reinke	124	31	200 hsp Vertical Hollow Shaft Motor	800
17	1980	8	Reinke	58		Total GPM	6,920
			TOTAL	1,801		GPM/Irr Acre	3.84

	RLF Clayton Farm - N				
	Circle #	Year	Towers	Manufacturer	Irr Acres
	1	2011	7	Reinke	87
	2	2010	8	Reinke	124
	3	2011	8	Reinke	124
	4	2011	8	Reinke	124
	5	2010	8	Reinke	121
	6	1996	8	Reinke	120
	7	2011	8	Reinke	124
	8	2010	8	Reinke	117
	9	2010	8	Reinke	121
	11	2011	8	Reinke	122
	12	1996	8	Reinke	124
	13	1996	8	Reinke	63
	14	2011	8	Reinke	124
	15	2011	8	Reinke	123
	16	1995	8	Reinke	124
	17	1980	8	Reinke	58
	29	1992	9	Reinke	96
	30	2017	9	Valley 8000	171
	31	2011	9	Reinke	134
TOTALS	19 Sprinklers	Average 17 Yrs Old			2,202

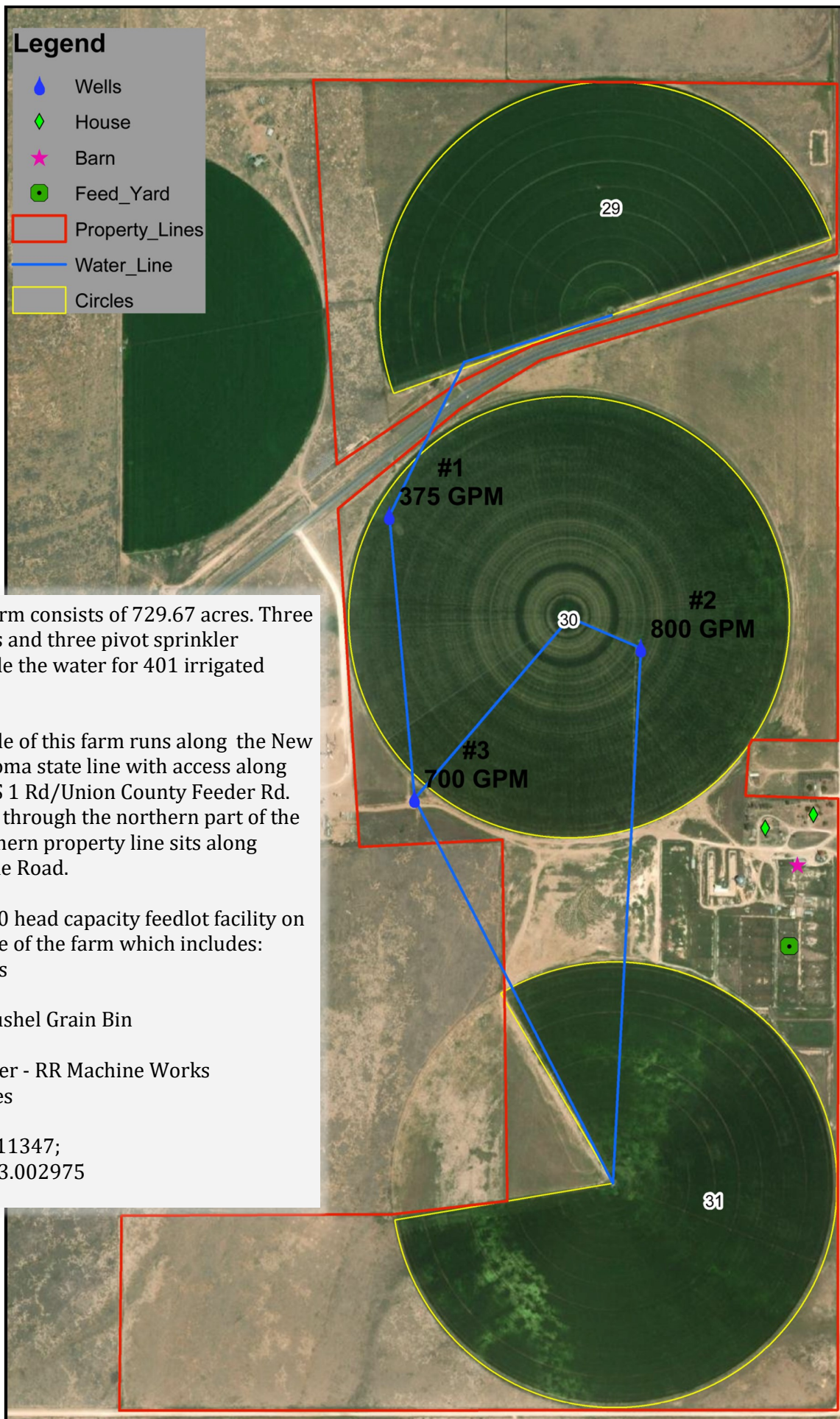




North & Feedlot Farm			
Well #		GPM 2022 Q2	
4	Submersible	60	
5	Submersible	200	
6	125 hsp Vertical Hollow Shaft Motor	450	
7	125 hsp Vertical Hollow Shaft Motor	1,140	
8	125 hsp Vertical Hollow Shaft Motor	230	
9	125 hsp Vertical Hollow Shaft Motor	150	
10	Submersible	100	
11	200 hsp Vertical Hollow Shaft Motor	750	
12	200 hsp Vertical Hollow Shaft Motor	300	
13	75 hsp Vertical Hollow Shaft Motor	130	
14	125 hsp Vertical Hollow Shaft Motor	600	
15	150 hsp Vertical Hollow Shaft Motor	480	
26	200 hsp Vertical Hollow Shaft Motor	1,180	
30	150 hsp Vertical Hollow Shaft Motor	350	
31	200 hsp Vertical Hollow Shaft Motor	800	
1	100 hsp Vertical Hollow Shaft Motor	370	
2	125 hsp Vertical Hollow Shaft Motor	800	
3	150 hsp Vertical Hollow Shaft Motor	700	
18	Total GPM	8,790	488.33
	GPM/Irr Acre	3.99	







The Feedlot Farm consists of 729.67 acres. Three irrigation wells and three pivot sprinkler systems provide the water for 401 irrigated acres.

The eastern side of this farm runs along the New Mexico/Oklahoma state line with access along county road NS 1 Rd/Union County Feeder Rd. SH 56/64 runs through the northern part of the farm. The southern property line sits along Texas State Line Road.

There is a 5,600 head capacity feedlot facility on the eastern side of the farm which includes:

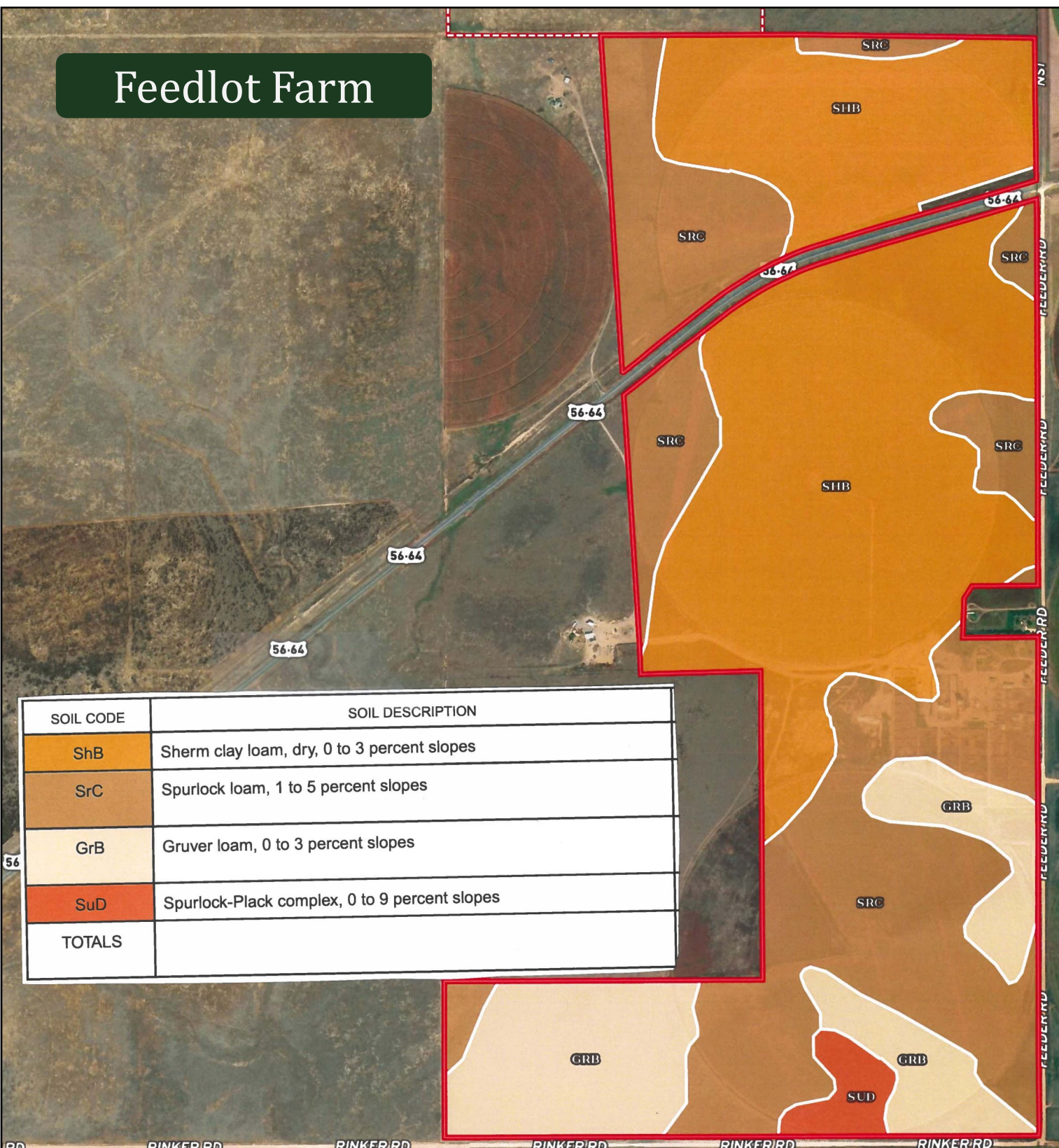
- Two houses
- One shop
- 110,000 Bushel Grain Bin
- Silage Pits
- Steam Flaker - RR Machine Works
- Truck Scales

Latitude: 36.511347;  
Longitude: -103.002975



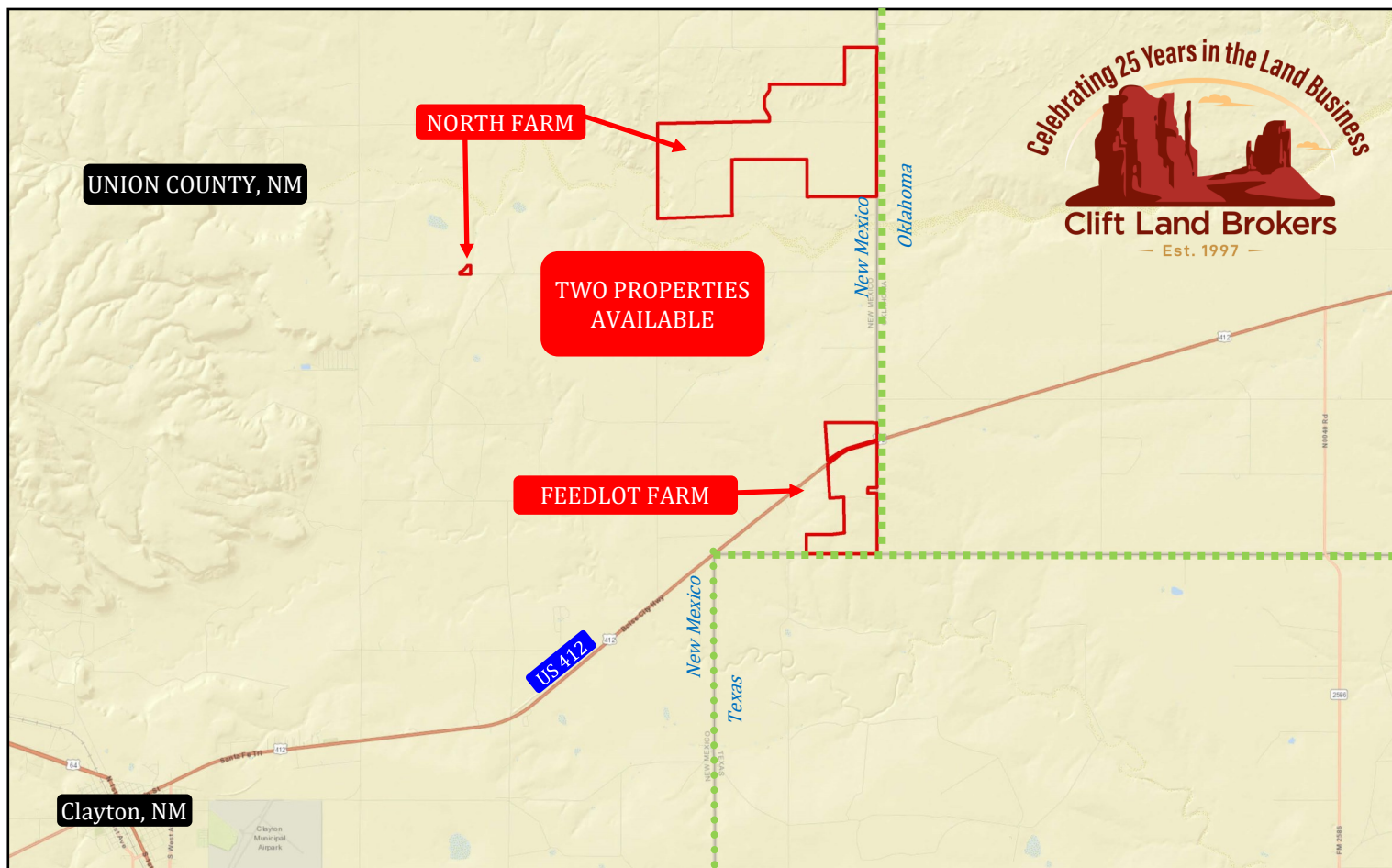
# Feedlot Farm

SOIL CODE	SOIL DESCRIPTION
ShB	Sherm clay loam, dry, 0 to 3 percent slopes
SrC	Spurlock loam, 1 to 5 percent slopes
GrB	Gruver loam, 0 to 3 percent slopes
SuD	Spurlock-Plack complex, 0 to 9 percent slopes
TOTALS	



RLF Clayton Farm - Feedlot Farm							
Circle #	Year	Towers	Manufacturer	Irr Acres	Well #		GPM-2022 Q2
29	1992	9	Reinke	96	1	100 hsp Vertical Hollow Shaft Motor	370
30	2017	9	Valley 8000	171	2	125 hsp Vertical Hollow Shaft Motor	800
31	2011	9	Reinke	134	3	150 hsp Vertical Hollow Shaft Motor	700
			TOTALS	401		Total GPM	1,870
						GPM/Irr Acre	4.67





Sheldon Snyder, ALC  
 Office: 806.355.9856  
 Cell: 806.333.2346  
[sheldon@cliftlandbrokers.com](mailto:sheldon@cliftlandbrokers.com)

905 S. Fillmore St., Ste. 102  
 Amarillo, TX 79101  
[CliftLandBrokers.com](http://CliftLandBrokers.com)  
 800.299.LAND (5263)

The information contained herein is as obtained by Clift Land Brokers from the owner and other sources. Even though this information is considered reliable, neither broker nor owner make any guarantee, warranty or representation as to the correctness of any data or descriptions. The accuracy of such statements should be determined through independent investigation made by the prospective Buyer. All acreages referenced in this brochure are estimates based available legal descriptions. You are urged to form your own independent conclusions and evaluations in consultation with legal counsel, accountants, and/or investment advisors concerning any and all material contained herein.