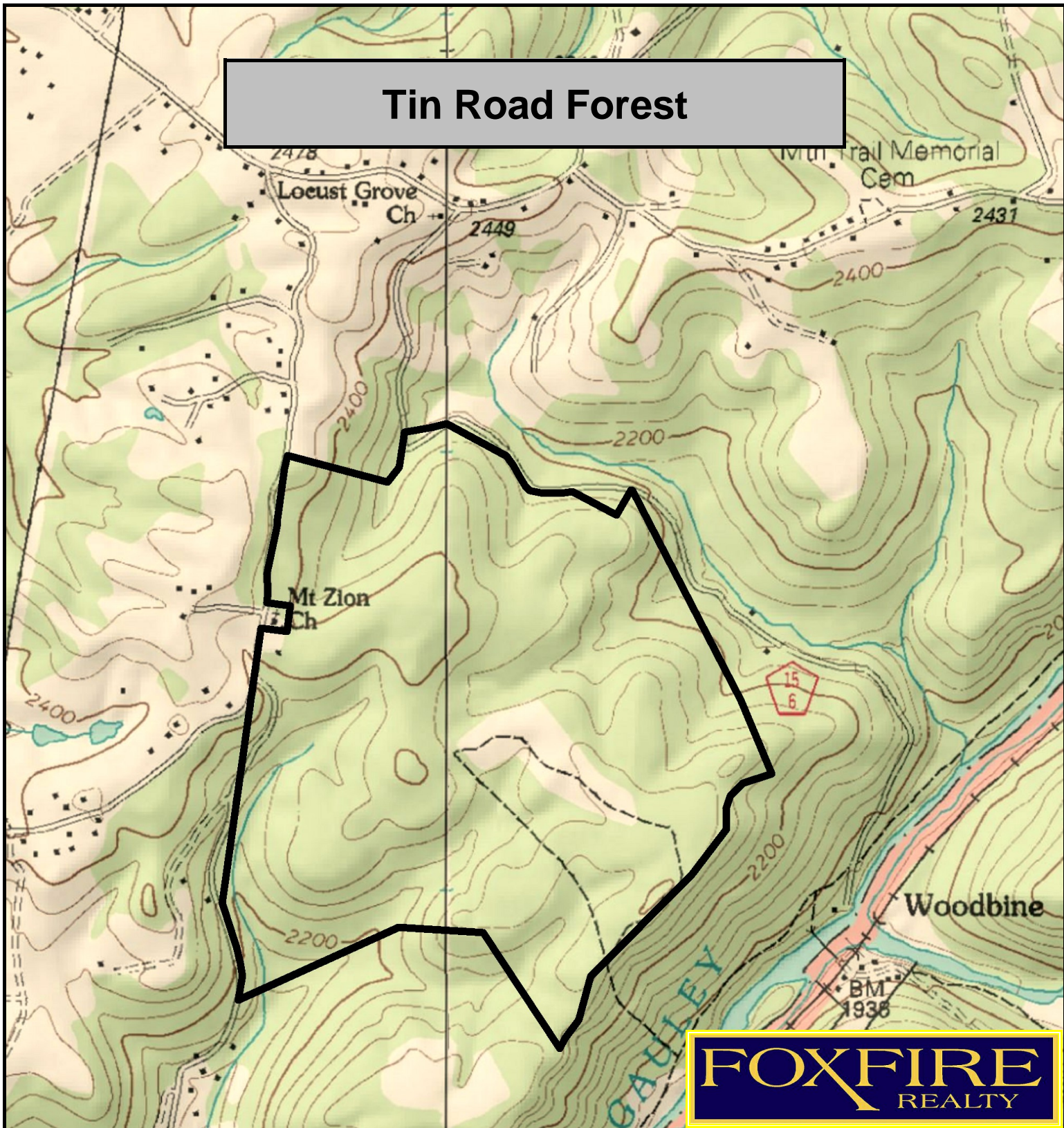
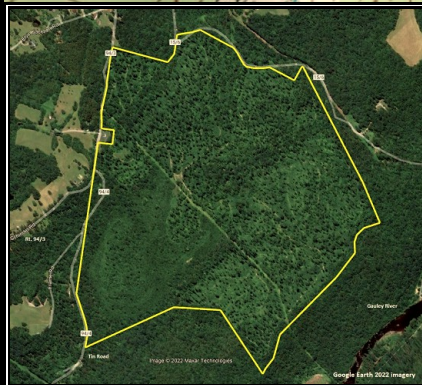


Tin Road Forest



FOXFIRE
REALTY



Tin Road Forest, Nicholas County, WV
TOPOGRAPHIC MAP
Elevation Range: 2147' - 2455' +/-
Google Coordinates: LAT 38.305854 (N), LON -80.629693 (W)
This map is for general location purposes only. Consult a licensed land surveyor for actual boundary location and acreage.

RICHARD GRIST, Broker - Auctioneer - Forester
304.646.8837 Richard@Foxfirenation.com
WWW.FOXFIRENATION.COM

FOR TOPO MAP

SCALE 1:12000

1 INCH = 1,000 FT.

