



FARM & RANCH

283+ ACRES JUST NORTH OF THE UP-AND-COMING MINERAL WELLS

TBD Union Hill Rd. – Mineral Wells, TX



STEPHEN
REICH GROUP
WILLIAMS TREW REAL ESTATE

WilliamTrew[☆]
A DIVISION OF EBBY HALLIDAY REAL ESTATE, INC.

LISTED BY **STEPHEN REICH GROUP** OF WILLIAMS TREW REAL ESTATE

PROPERTY SUMMARY

DESCRIPTION

This place has something for everyone, with 8 ponds, over 130 feet of elevation change, open pastures, and heavy cover. Views of the Baker Hotel can be seen all along the hill side on the East, with Westerly views also available. A variety of wildlife have found refuge in this picturesque property. The top of the hill is very level, offering a multitude of great homesites. This property provides a fabulous opportunity to build a combination horse, cattle, and recreation ranch, with an incredible investment opportunity as Mineral Wells continues to grow.

LOCATION

CITY	Mineral Wells
County	Palo Pinto
Schools	Mineral Wells ISD

Driving Directions From I-20 go north on Ric Williamson. Left on Mineral Wells Hwy. Right on 1821. Left on NE 23rd. Right on 281. Left on Union Hill. Property will be on the right.

OFFER SUMMARY

List Price	\$3,257,421
Lot Size	283.254 acres
Utilities	Electricity Available

HIGHLIGHTS

- 8 PONDS
- OVER 130' OF ELEVATION CHANGE
- OPEN PASTURES & HEAVY COVER
- VARIETY OF WILDLIFE
- MULTITUDE OF GREAT HOMESITES
- VIEWS OF THE BAKER HOTEL

LISTING PRESENTED BY:



STEPHEN REICH
817-597-8884
stephen.reich@williamstrew.com



WilliamsTrew 
A DIVISION OF EBBY HALLIDAY REAL ESTATE, INC.

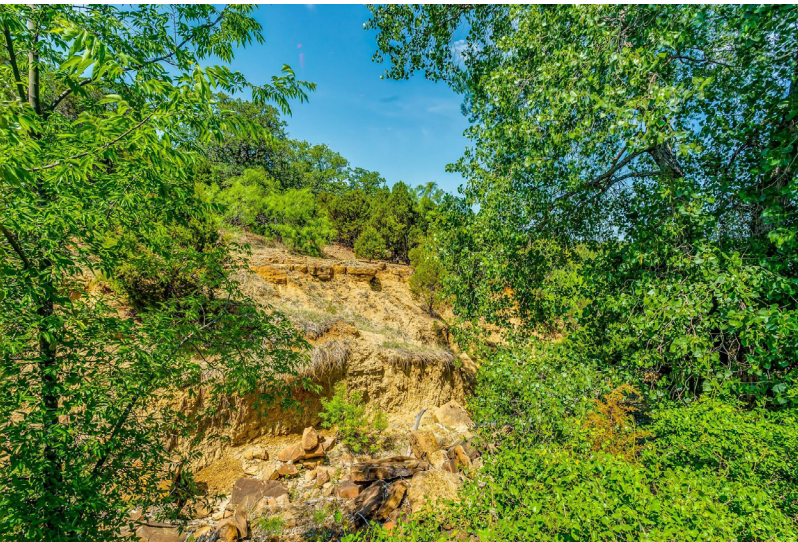
PROPERTY WEBSITE LINK:
stephenreichgroup.com/20062427



PARKER COUNTY OFFICE
400 Shops Boulevard, Ste. 200
Willow Park, TX 76087

FARM & RANCH • RESIDENTIAL • COMMERCIAL-DEVELOPMENT • LAND

PROPERTY PHOTOS



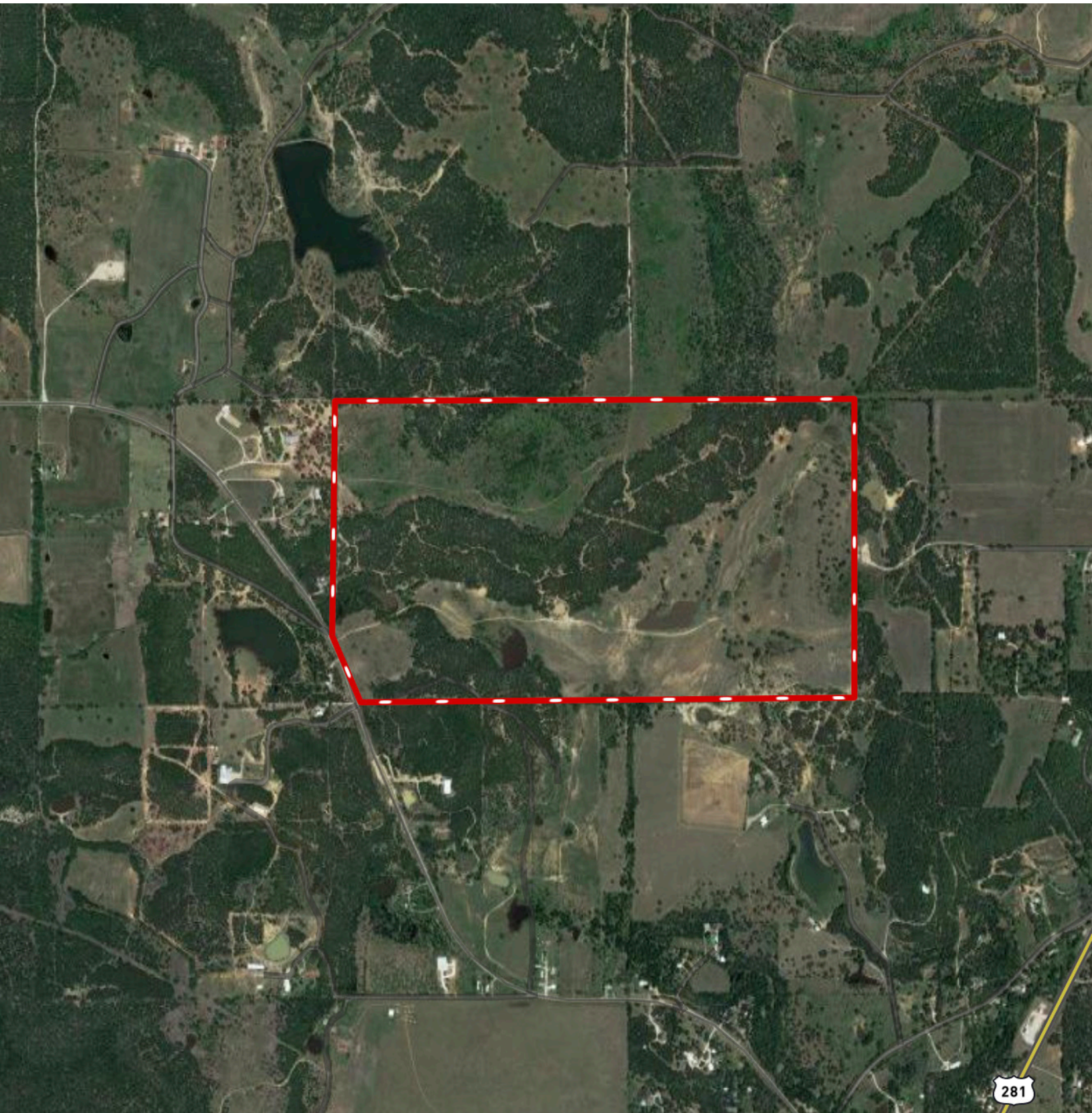
PROPERTY PHOTOS



STEPHEN REICH – 817.597.8884



AERIAL MAP



STEPHEN REICH – 817.597.8884



WilliamsTrew[☆]
A DIVISION OF EBBY HALLIDAY REAL ESTATE, INC.

CONTOUR LINES & FLOODPLAIN

