



**Jett Blackburn
Real Estate Inc.**



Valley View Lot #1 - Buildable

\$120,000



Contact Card

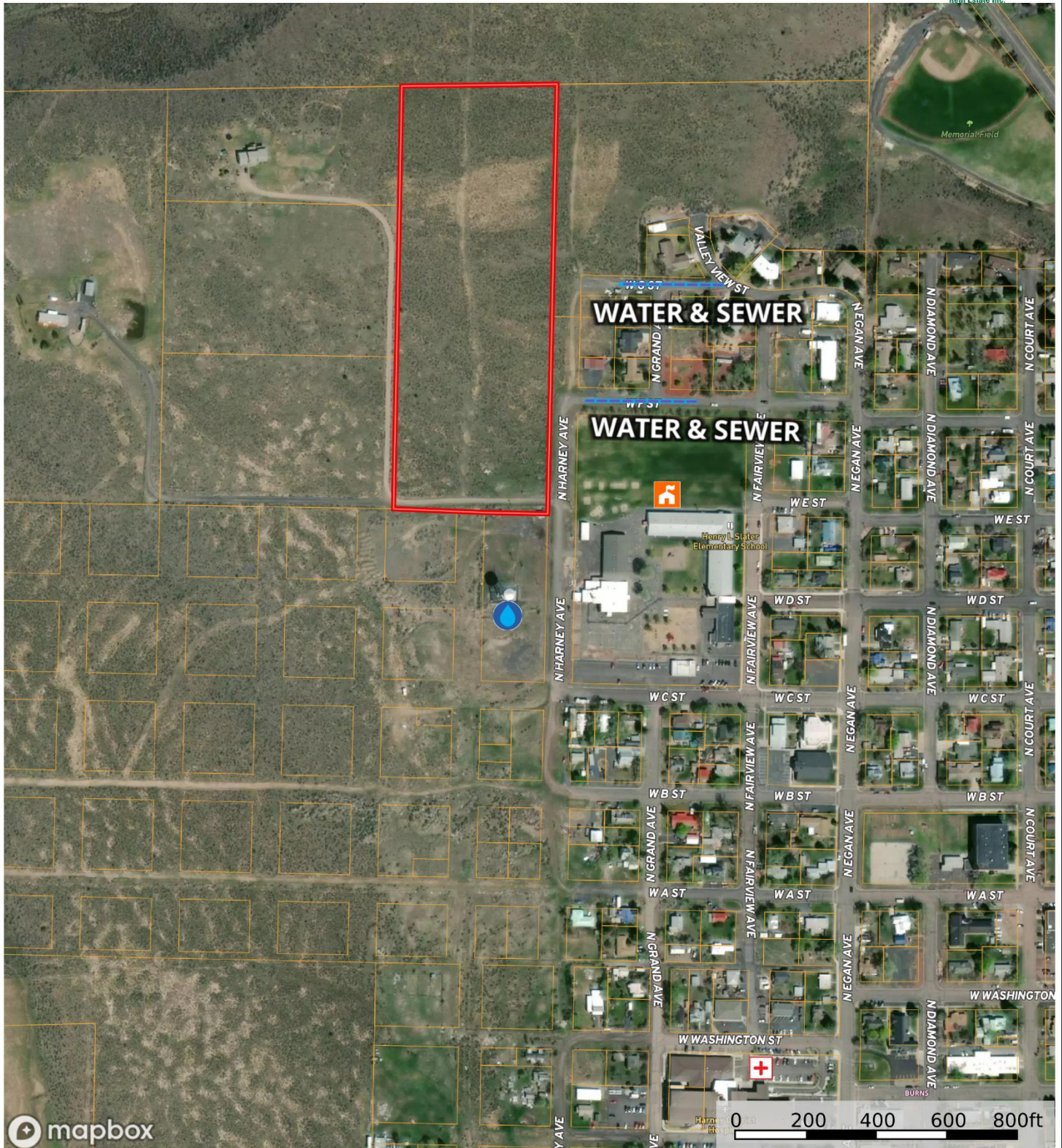
Presented by
Colby Marshall
Jett Blackburn Real Estate
707 Ponderosa Village, Burns OR 97720
Phone (541) 573-7206 * Fax: (541) 573-5011
colby@jettblackburn.com
www.jettblackburn.com



LEGAL DESC:	T23S, R30E, W.M. Sec 12AD, Tax Lot 100
LOT SIZE:	12.42 acres (+/-)
PRICE:	\$120,000
TAXES:	\$495
ZONING:	Residential
WATER:	City of Burns; service lines not located on the property
SEWER:	City of Burns; service lines not located on the property
POWER:	Oregon Trail Electric Cooperative; located on the property
FINANCING:	Cash & bank financing
REMARKS:	Residential lot on the edge of Burns, Oregon with views of the Harney Valley! This is a desirable large lot for building your dream home or developing the ground for multiple home sites. The property is zoned for residential use and construction and development permits are procured through the Harney County Planning Department . Located across the street from the community elementary school and a short distance from the hospital and downtown, this great location is worth a look!

Valley View Lot #1 - Cason

Harney County, Oregon, 12.42 AC +/-




 Hospital  Water Tower  School  Water and Sewer  Boundary

Curt Blackburn
P: 541-573-7206

office@jettblackburn.com

707 Ponderosa Village, Burns, OR 97720

 The information contained herein was obtained from sources deemed to be reliable. MapRight Services makes no warranties or guarantees as to the completeness or accuracy thereof.

Valley View Lot #1 - Cason
Harney County, Oregon, 12.42 AC +/-



Curt Blackburn
P: 541-573-7206

office@jettblackburn.com

707 Ponderosa Village, Burns, OR 97720



The information contained herein was obtained from sources deemed to be reliable. MapRight Services makes no warranties or guarantees as to the completeness or accuracy thereof.