

Aerial Map



©2022 AgriData, Inc.

Map Center: 39° 8' 37.81, -92° 1' 37.45

0ft 563ft 1126ft

3-50N-10W
Audrain County
Missouri



9/1/2022

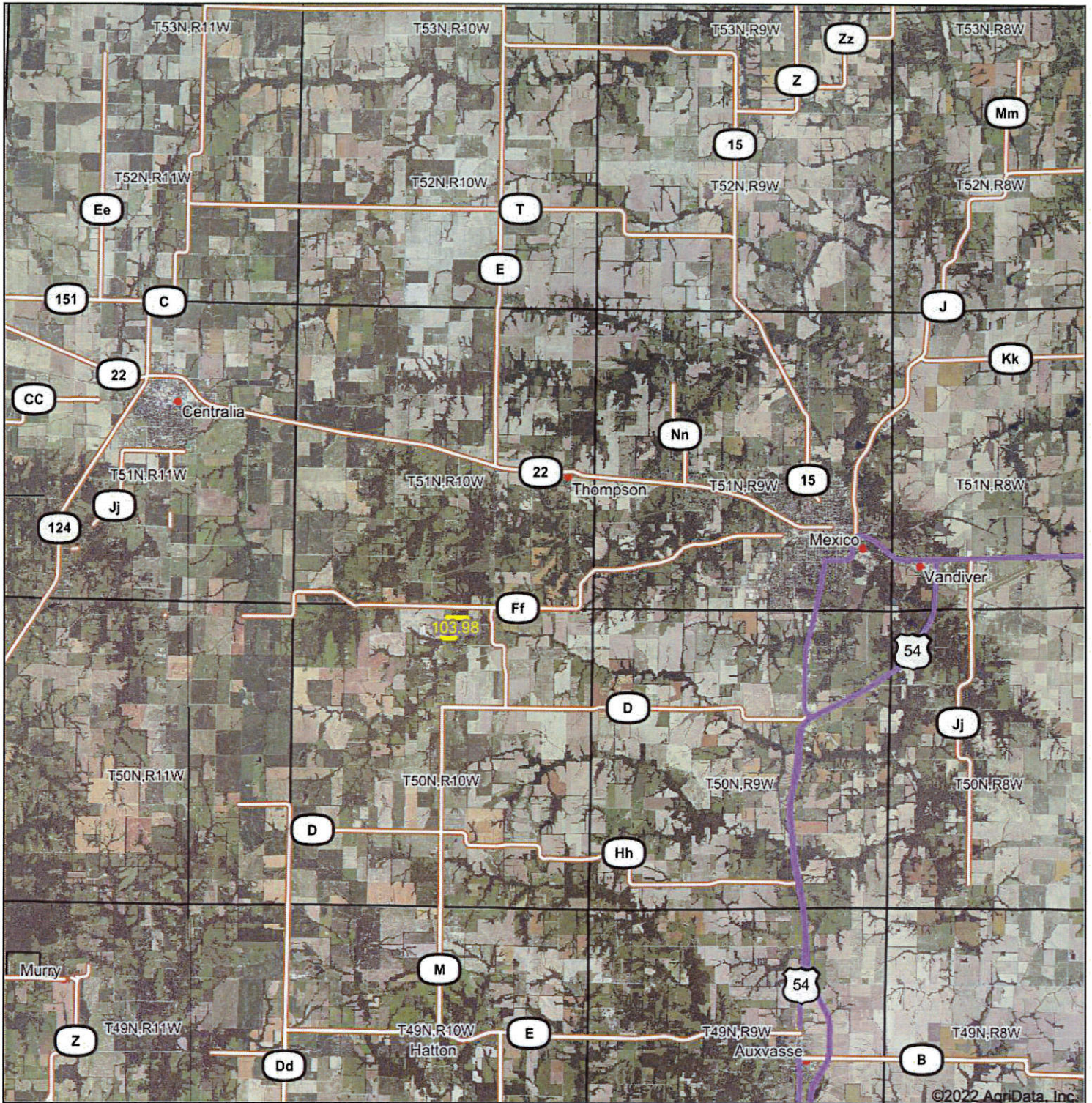
Maps Provided By:



© AgriData, Inc. 2021

www.AgriDataInc.com

Aerial Map



Map Center: 39° 9' 58.74, -91° 59' 30.47

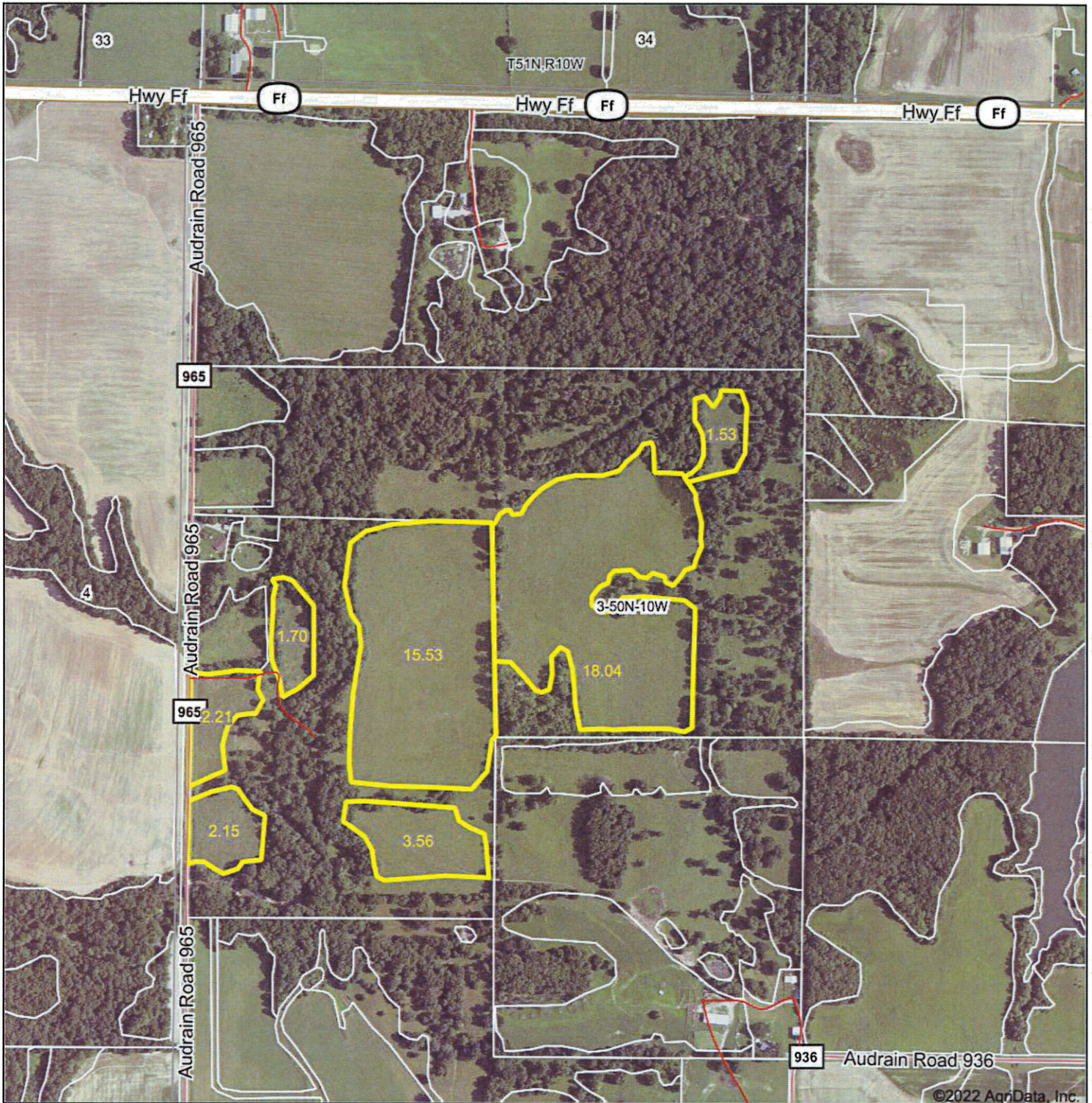
0mi 3.2mi 6.3mi

25-51N-10W
Audrain County
Missouri

Maps Provided By:
surety
CUSTOMIZED ONLINE MAPPING
© AgriData, Inc. 2021 www.AgriDataInc.com



Aerial Map



Map Center: 39° 8' 43.97, -92° 1' 33.4

0ft 667ft 1333ft

3-50N-10W
Audrain County
Missouri



Maps Provided By:
surety
CUSTOMIZED ONLINE MAPPING
© AgriData, Inc. 2021 www.AgriDataInc.com

Field borders provided by Farm Service Agency as of 5/21/2008.



Audrain County, Missouri



Common Land Unit

Cropland Non-cropland CRP

Farm 6275
Tract 10690

Wetland Determination Identifiers

- Restricted Use
- Limited Restrictions
- Exempt from Conservation Compliance Provisions

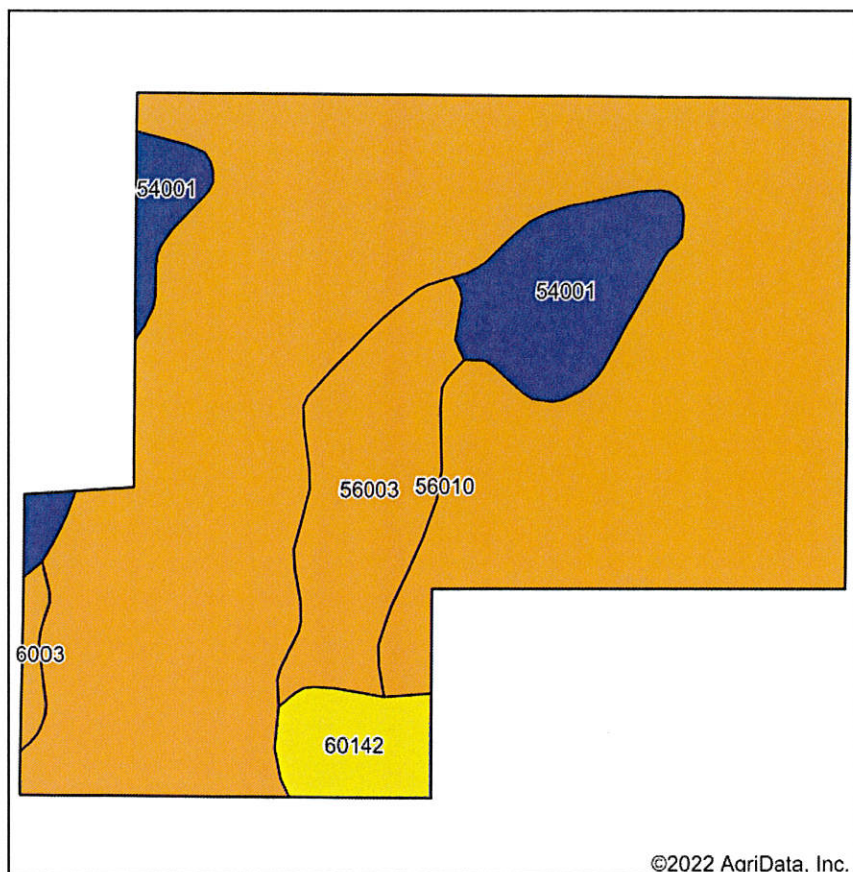
2022 Crop Year



Tract 1 of 1

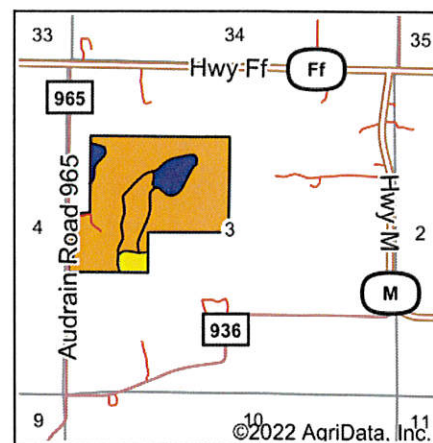
United States Department of Agriculture (USDA) Farm Service Agency (FSA) maps are for FSA Program administration only. This map does not represent a legal survey or reflect actual ownership; rather it depicts the information provided directly from the producer and/or National Agricultural Imagery Program (NAIP) imagery. The producer accepts the data 'as is' and assumes all risks associated with its use. USDA-FSA assumes no responsibility for actual or consequential damage incurred as a result of any user's reliance on this data outside FSA Programs. Wetland identifiers do

Soils Map



©2022 AgriData, Inc.

Soils data provided by USDA and NRCS.



State: **Missouri**
 County: **Audrain**
 Location: **3-50N-10W**
 Township: **Wilson**
 Acres: **104.27**
 Date: **9/6/2022**

MEYER & COMPANY
 REAL ESTATE AUCTIONS

Maps Provided By:
surety
 CUSTOMIZED ONLINE MAPPING
 © AgriData, Inc. 2021 www.AgrDataInc.com



Area Symbol: MO007, Soil Area Version: 25

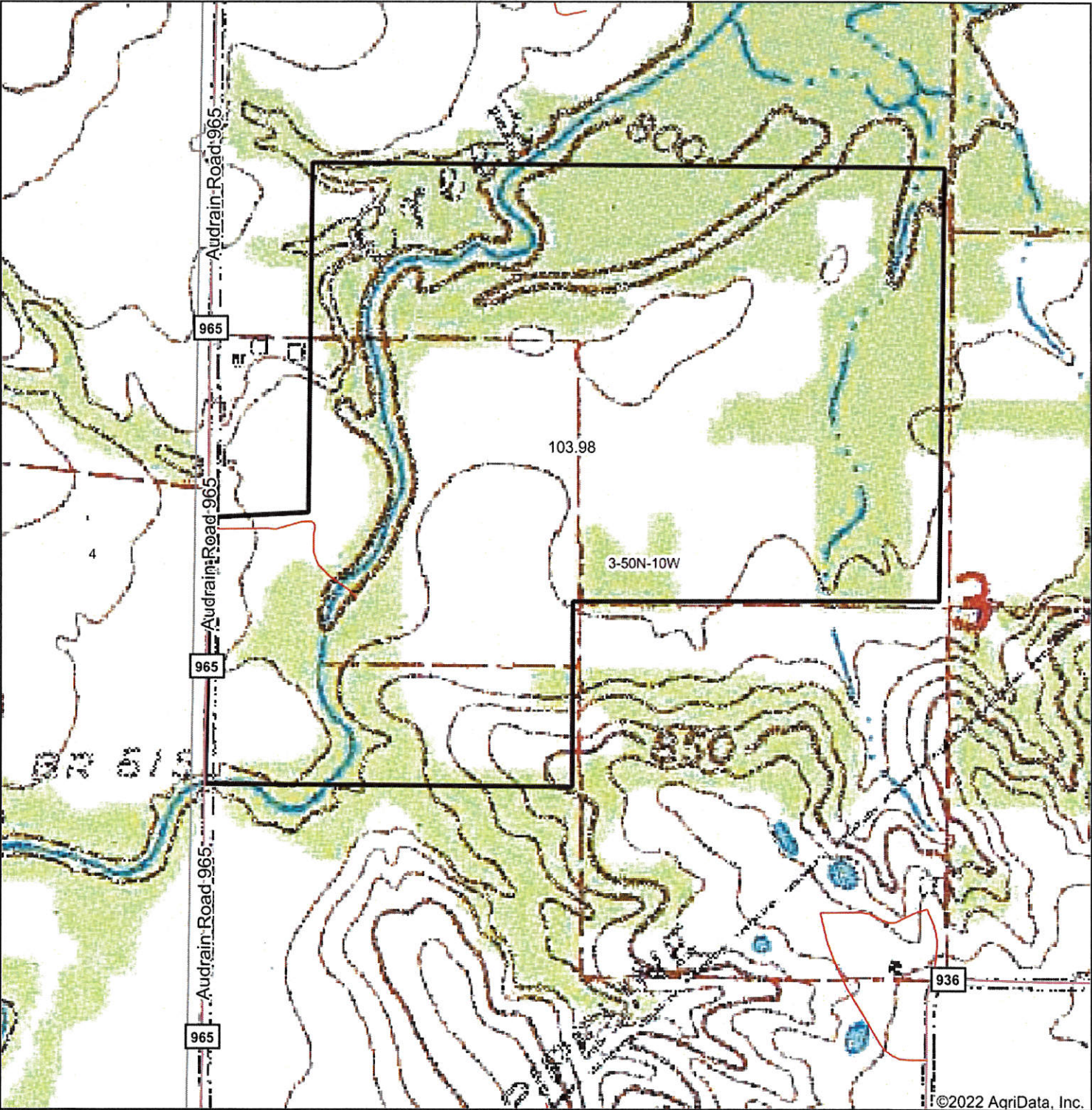
Code	Soil Description	Acres	Percent of field	Non-Irr Class Legend	Non-Irr Class *c	Common bermudagrass Tons	Orchardgrass red clover Tons	Tall fescue Tons	Warm season grasses Tons	*n NCCPI Soybeans
56010	Belknap silt loam, 0 to 2 percent slopes, frequently flooded	79.82	76.6%		IIIw					68
56003	Twomile silt loam, 0 to 2 percent slopes, occasionally flooded	11.28	10.8%		IIIw					66
54001	Gifford silt loam, 1 to 4 percent slopes	9.48	9.1%		Ile	8	7	8	9	70
60142	Keswick loam, 9 to 14 percent slopes, eroded	3.69	3.5%		IVe					38
Weighted Average					2.94	0.7	0.6	0.7	0.8	*n 66.9

*n: The aggregation method is "Weighted Average using all components"

*c: Using Capabilities Class Dominant Condition Aggregation Method

Soils data provided by USDA and NRCS.

Topography Map



map center: 39° 8' 37.81, -92° 1' 37.45

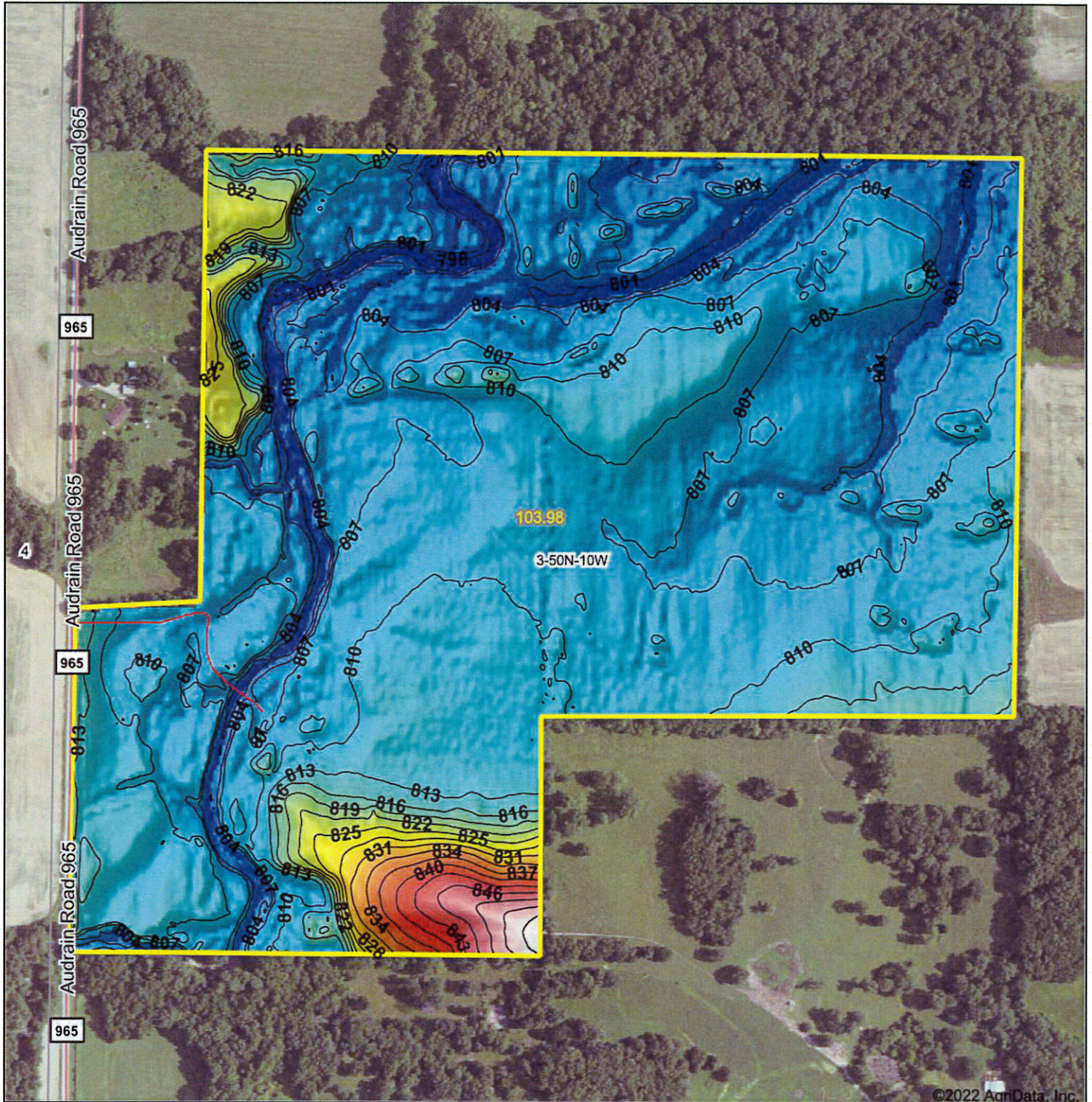
0ft 563ft 1126ft

3-50N-10W
Audrain County
Missouri



9/1/2022

Topography Hillshade



Source: USGS 3 meter dem
Interval(ft): 3
Min: 794.9
Max: 856.6
Range: 61.7
Average: 809.2
Standard Deviation: 7.55 ft

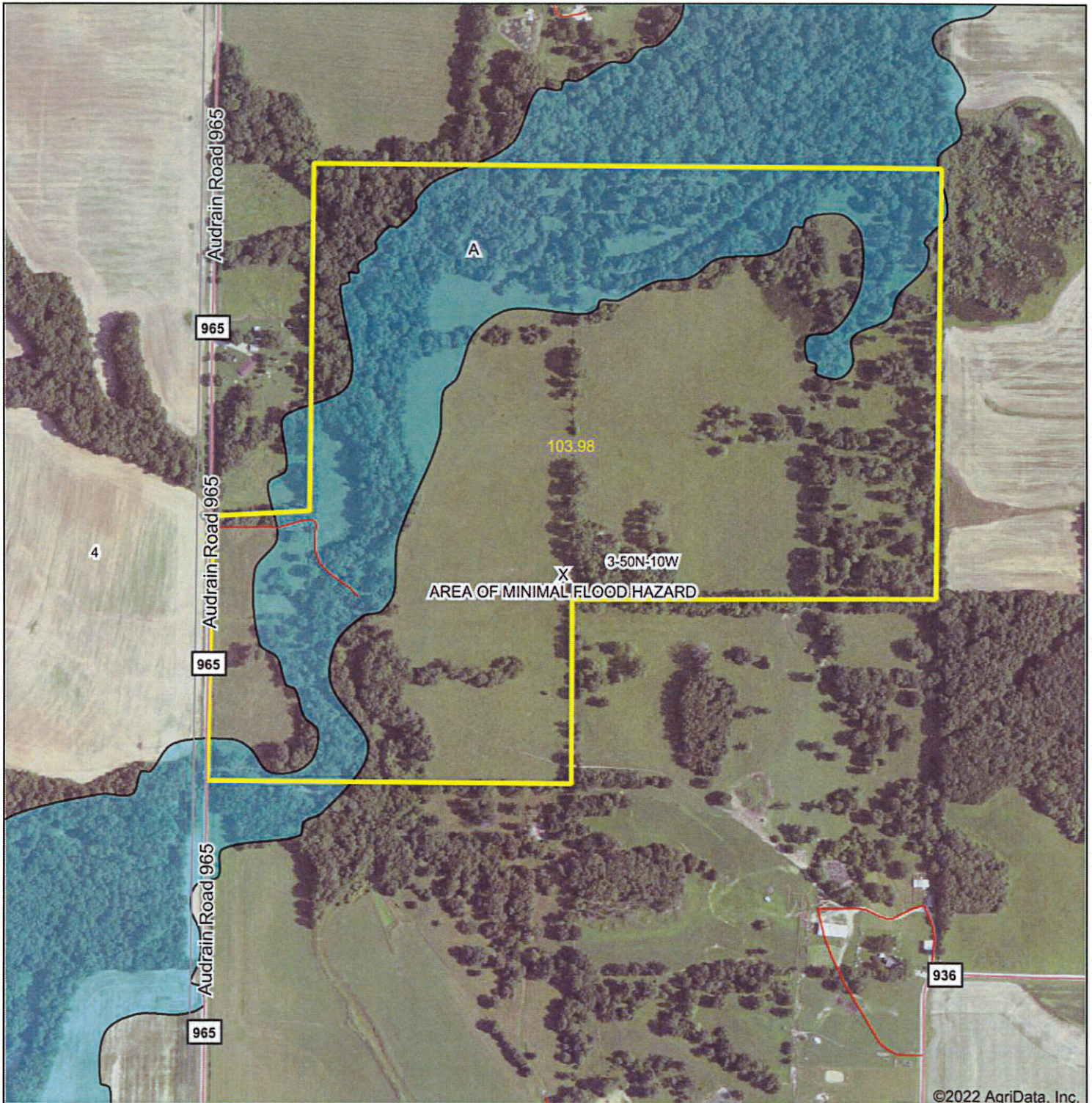


9/1/2022

3-50N-10W
Audrain County
Missouri

map center: 39° 8' 37.81, -92° 1' 37.45

Aerial Map



Map Center: 39° 8' 37.81, -92° 1' 37.45

0ft 563ft 1126ft

3-50N-10W
Audrain County
Missouri



Maps Provided By:



© AgriData, Inc. 2021 www.AgriDataInc.com

Flood related information provided by FEMA