

91 ac HARDIN CO

\$13,500/AC



**CR 190, BELLE CENTER
VMS 10010, McDONALD TWP., HARDIN CO
SYSTEMATICALLY TILED**



**Apx. 91.08 ac, VMS 10010, McDonald Twp.
Frontage on County Rd. 190, near Roundhead.**

Apx. 86 ac tillable. Systematically tiled.

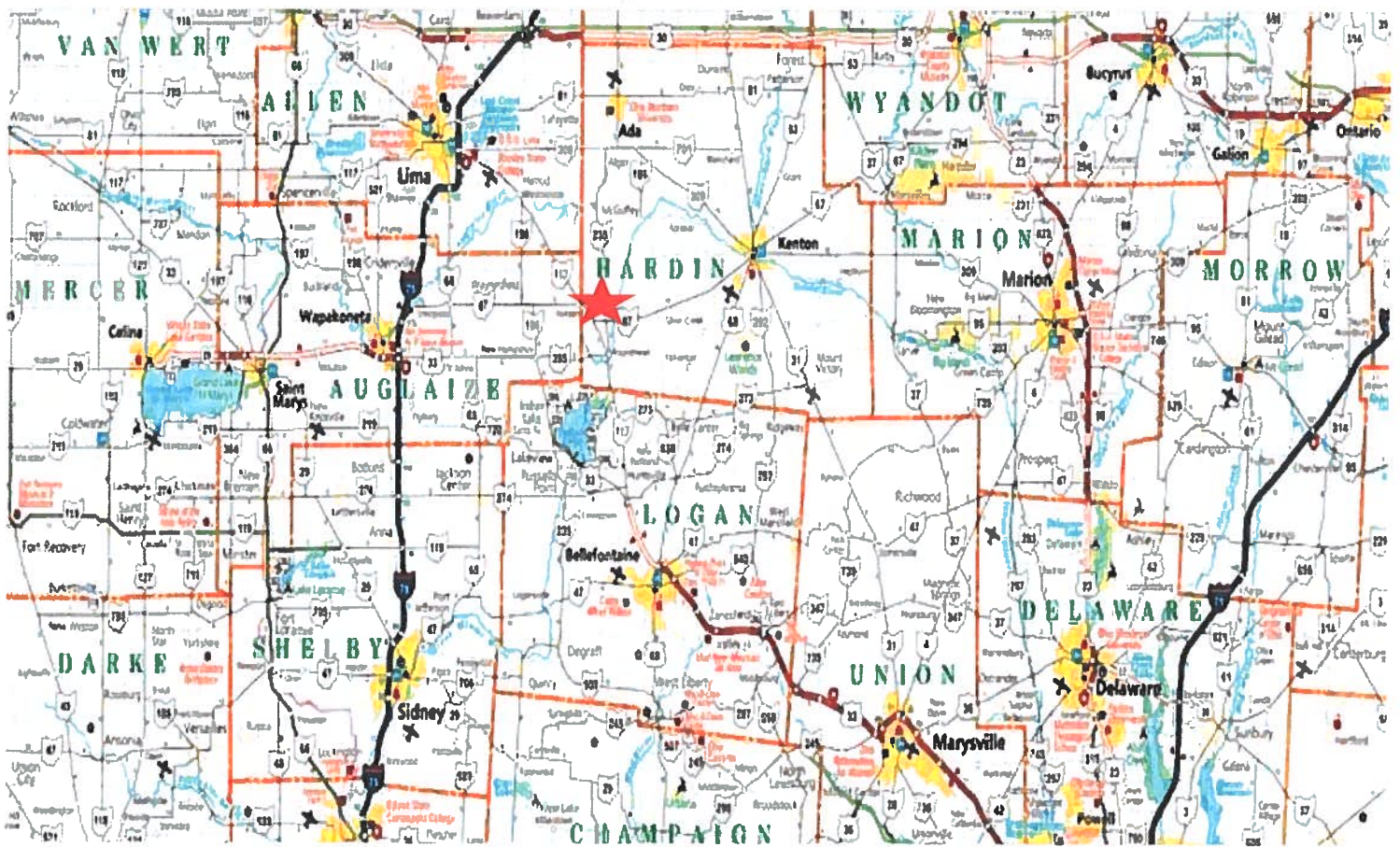
**Soils consist primarily of
Blount, Pewamo & Glynwood.**

USV SD

**Taxes are CAUV
Annual taxes-\$1,795.40**

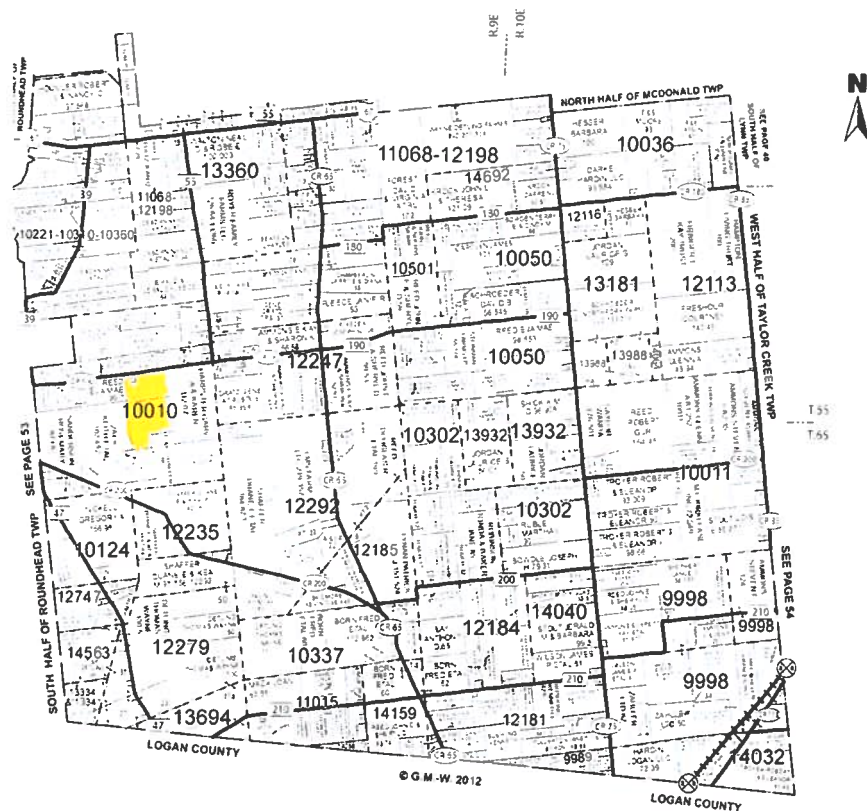
**Ron Spencer
419-230-1111**



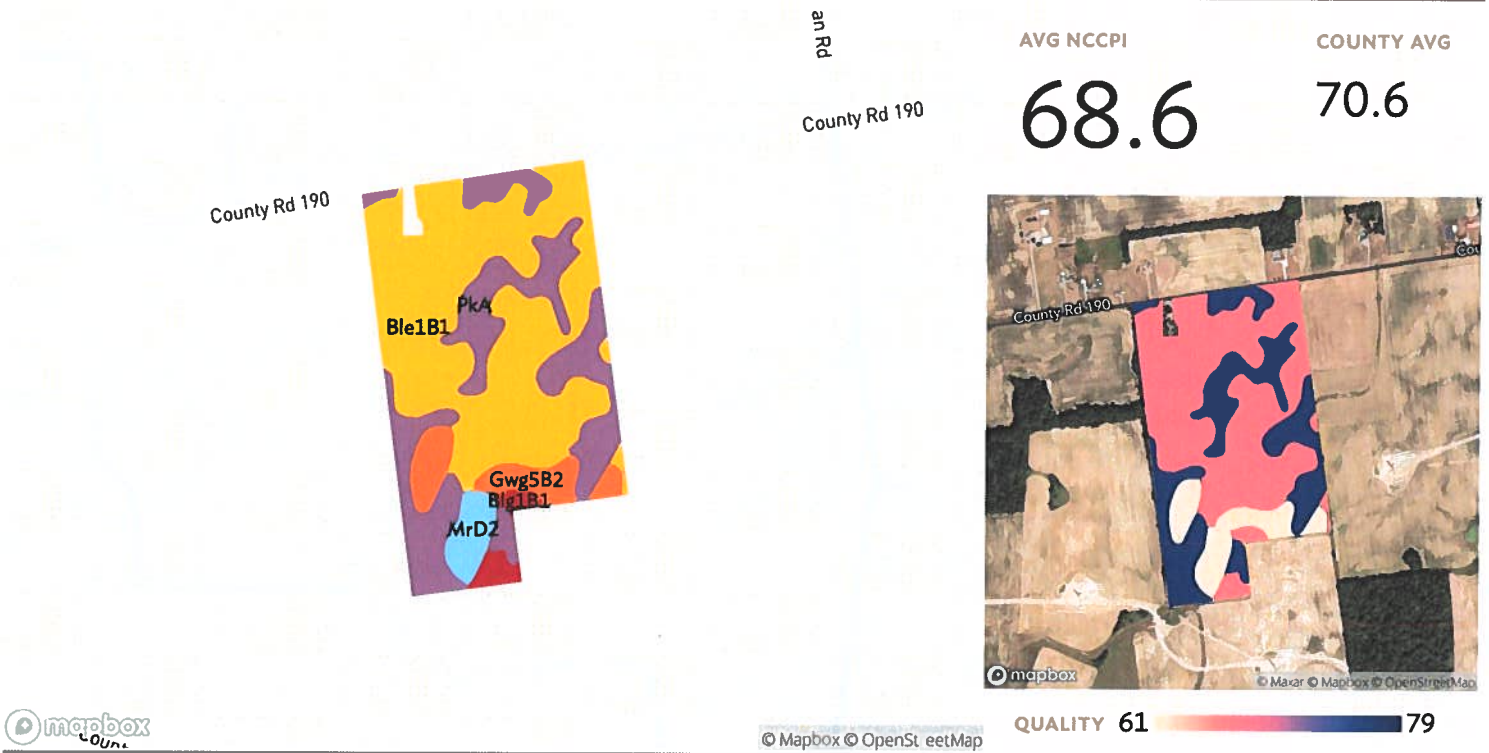


MCDONALD TWP. -- SOUTH

HARDIN COUNTY, OHIO T55S6S R 9E10E



2 fields, 92 acres in Hardin County, OH



All fields

Source: NRCS Soil Survey

92 ac.

SOIL CODE	SOIL DESCRIPTION	ACRES	PERCENTAGE OF FIELD	SOIL CLASS	NCCPI
Ble1B1	Blount silt loam, end moraine, 2 to 4 percent slopes	50.75	55.3%	2	66.7
PkA	Pewamo silty clay loam, 0 to 1 percent slopes	28.24	30.8%	2	76.7
Gwg5B2	Glynwood clay loam, ground moraine, 2 to 6 percent slopes, eroded	7.08	7.7%	2	56.4
MrD2	Morley clay loam, 12 to 18 percent slopes, eroded	3.46	3.8%	4	55.7
Blg1B1	Blount silt loam, ground moraine, 2 to 4 percent slopes	2.26	2.5%	2	66.7
		91.79			68.6

EVERY 40 ft



TILE
MAP