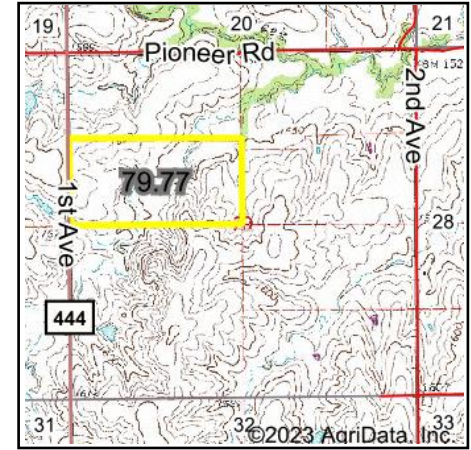
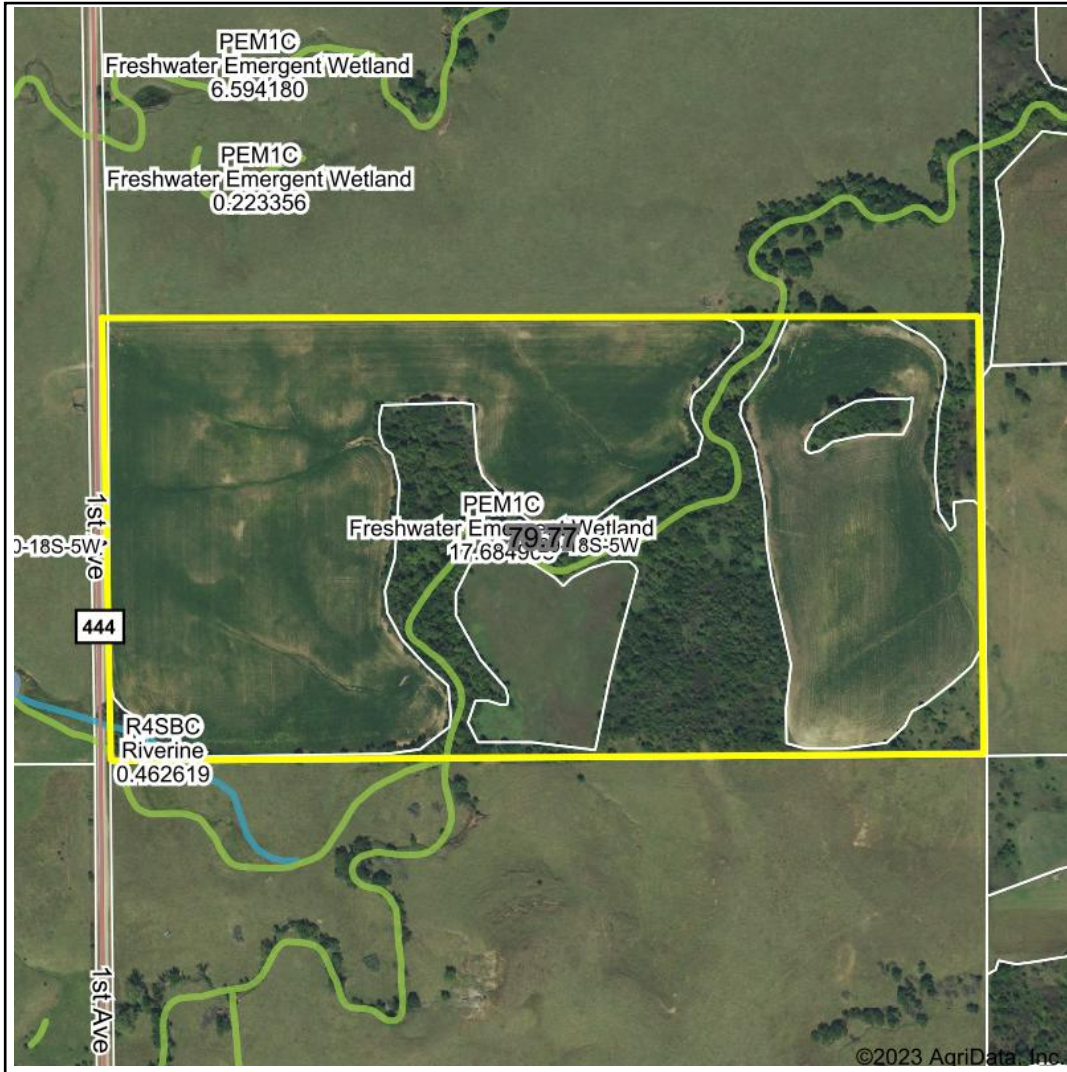


# Wetlands Map



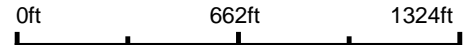
State: **Kansas**  
 Location: **29-18S-5W**  
 County: **McPherson**  
 Township: **South Sharps Creek**  
 Date: **2/19/2023**



Maps Provided By:



© AgriData, Inc. 2021 www.AgriDataInc.com



Classification Code	Type	Acres
PEM1C	Freshwater Emergent Wetland	1.09
R4SBC	Riverine	0.10
Total Acres		1.19

Data Source: National Wetlands Inventory website. U.S. DoI, Fish and Wildlife Service, Washington, D.C. <http://www.fws.gov/wetlands/>