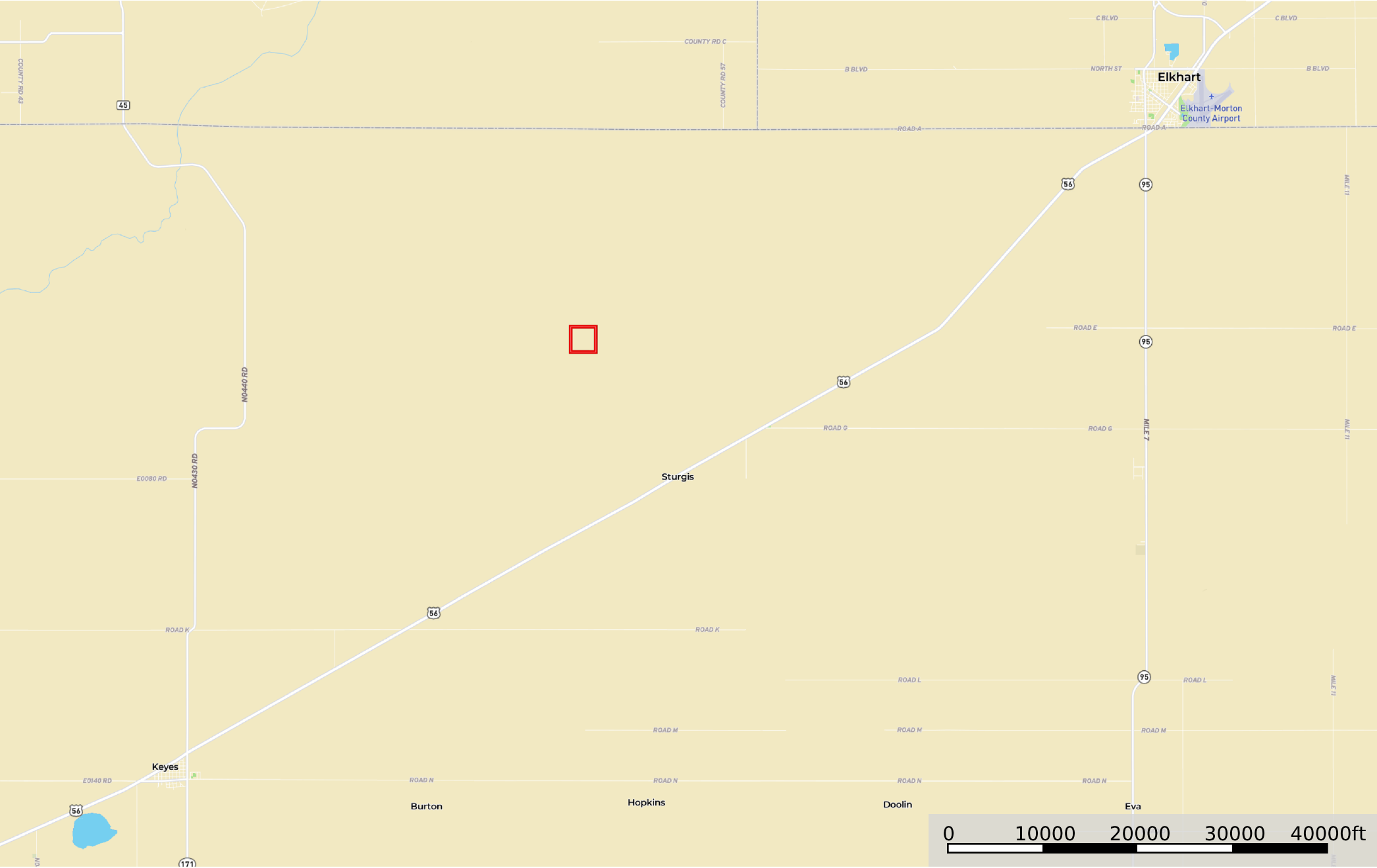

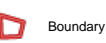
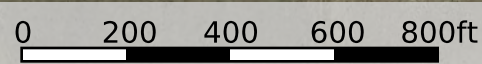
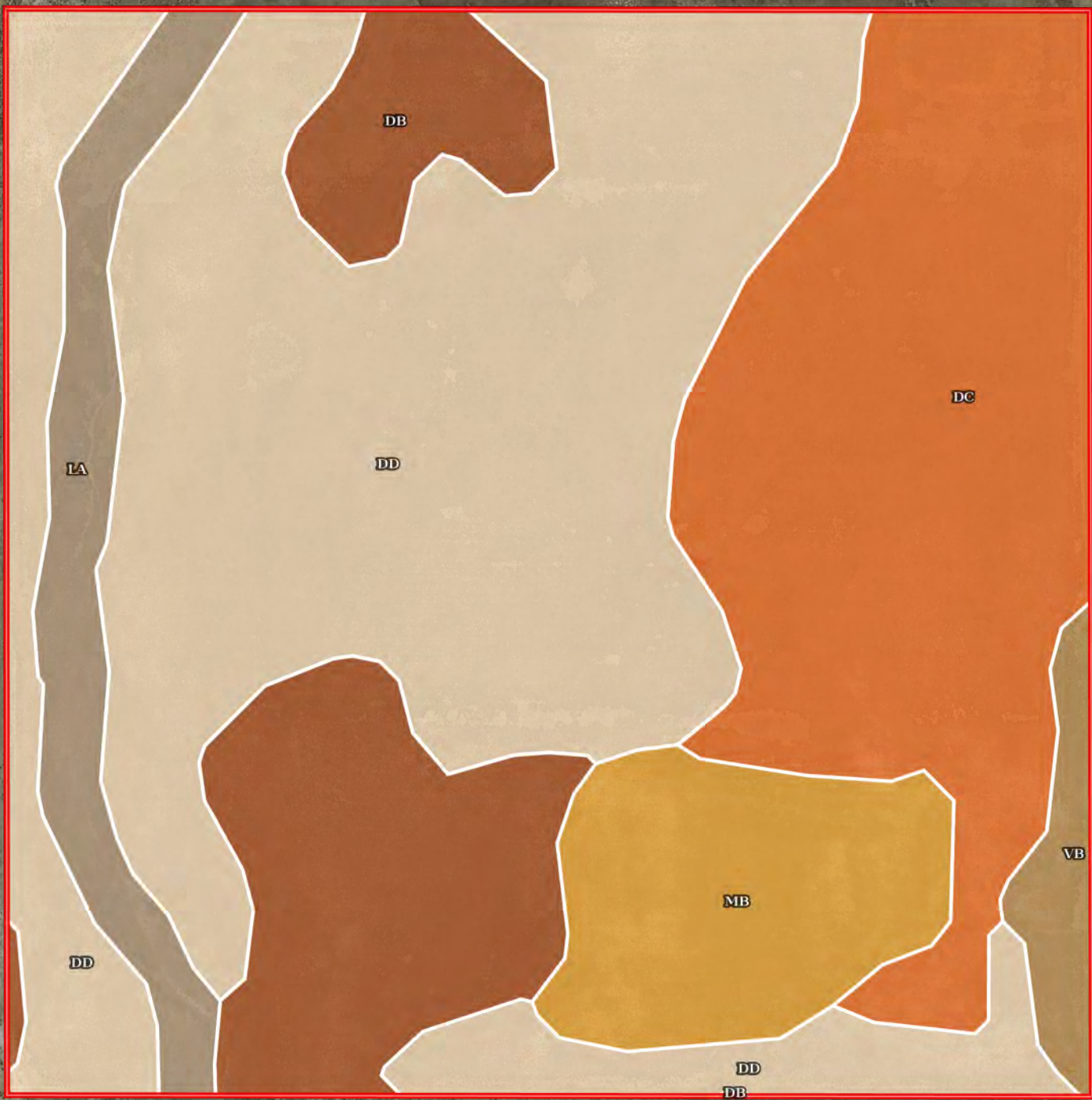


Cimarron 19 - Meyer  
Cimarron County, Oklahoma, 160.05 AC +/-



 Boundary





## Boundary 160.38 ac

SOIL CODE	SOIL DESCRIPTION	ACRES	%	CPI	NCCPI	CAP
Dd	Dalhart loamy fine sand, 0 to 3 percent slopes	74.06	46.17	0	43	3e
Dc	Dalhart fine sandy loam, 0 to 3 percent slopes, moderately eroded	38.06	23.73	0	42	3c
Db	Dalhart fine sandy loam, 1 to 3 percent slopes	21.93	13.67	0	49	3c
Mb	Conlen loam, 0 to 3 percent slopes	13.31	8.3	0	31	4e
La	Corlena loamy fine sand, 0 to 1 percent slopes, occasionally flooded	9.72	6.06	0	19	4e
Vb	Vona-Valent complex, 3 to 5 percent slopes	3.3	2.06	0	18	4e
TOTALS		160.38(*)	100%	-	40.62	3.16

(\*) Total acres may differ in the second decimal compared to the sum of each acreage soil. This is due to a round error because we only show the acres of each soil with two decimal.

### Capability Legend

Increased Limitations and Hazards

Decreased Adaptability and Freedom of Choice Users

Land, Capability

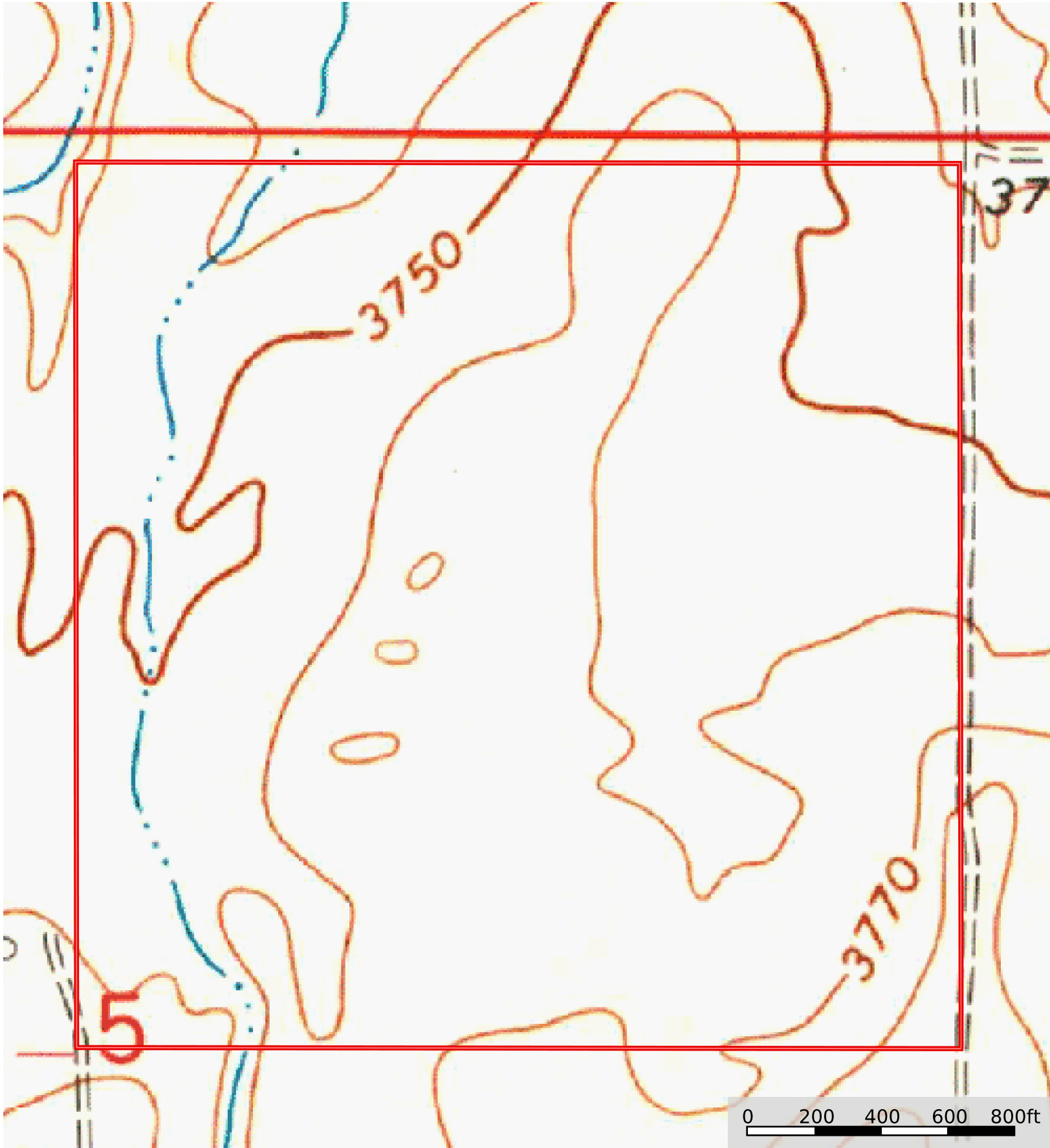
	1	2	3	4	5	6	7	8
'Wild Life'	•	•	•	•	•	•	•	•
Forestry	•	•	•	•	•	•	•	
Limited	•	•	•	•	•	•	•	
Moderate	•	•	•	•	•	•		
Intense	•	•	•	•	•			
Limited	•	•	•	•				
Moderate	•	•	•					
Intense	•	•						
Very Intense	•							


### Grazing Cultivation

(c) climatic limitations (e) susceptibility to erosion

(s) soil limitations within the rooting zone (w) excess of water





 Boundary