

AVAILABLE For Sale

Edison
19.69 Acres
Kern County, CA

The information contained herein may have been obtained from sources other than ASU Commercial. We have not verified such information and make no guarantees, warranties or representations about such information. It is your responsibility to independently confirm its accuracy and completeness prior to purchasing/leasing the property.



Michael T. Anchordoquy, AAC • Principal • 661 616 3577 • manchor@asuassociates.com • CA RE #01380986
11601 Bolthouse Drive Suite 110 • Bakersfield, CA 93311 • 661 862 5454 main • 661 862 5444 fax

Edison 19.69 Acres Available For Sale

Property Information

Kern County, CA

Location	The property is located along the east line of Edison Road approximately 1 mile south of Highway 58, southeast of Bakersfield, CA.
Kern County Assessor Parcel Number	177-210-27
Gross Acres	19.69 Acres
Legal Description	The North 1/2 of the Southwest 1/4 of the Northwest 1/4 of Section 9 T.30S R.29E more particularly described as Parcel 5 of Parcel Map No. 9720 in Kern County, CA.
Zoning	"A", Exclusive Agriculture. The property is not enrolled in the Williamson Act.
Plantings	Currently fallow.
Water	The property is located within the boundaries of the Arvin-Edison Water District, but does not receive water. There is no well on the property.
Asking Price	\$250,000. All cash to the Seller. Mineral rights are excluded.

Edison 19.69 Acres Available For Sale

Assessor's Parcel Map

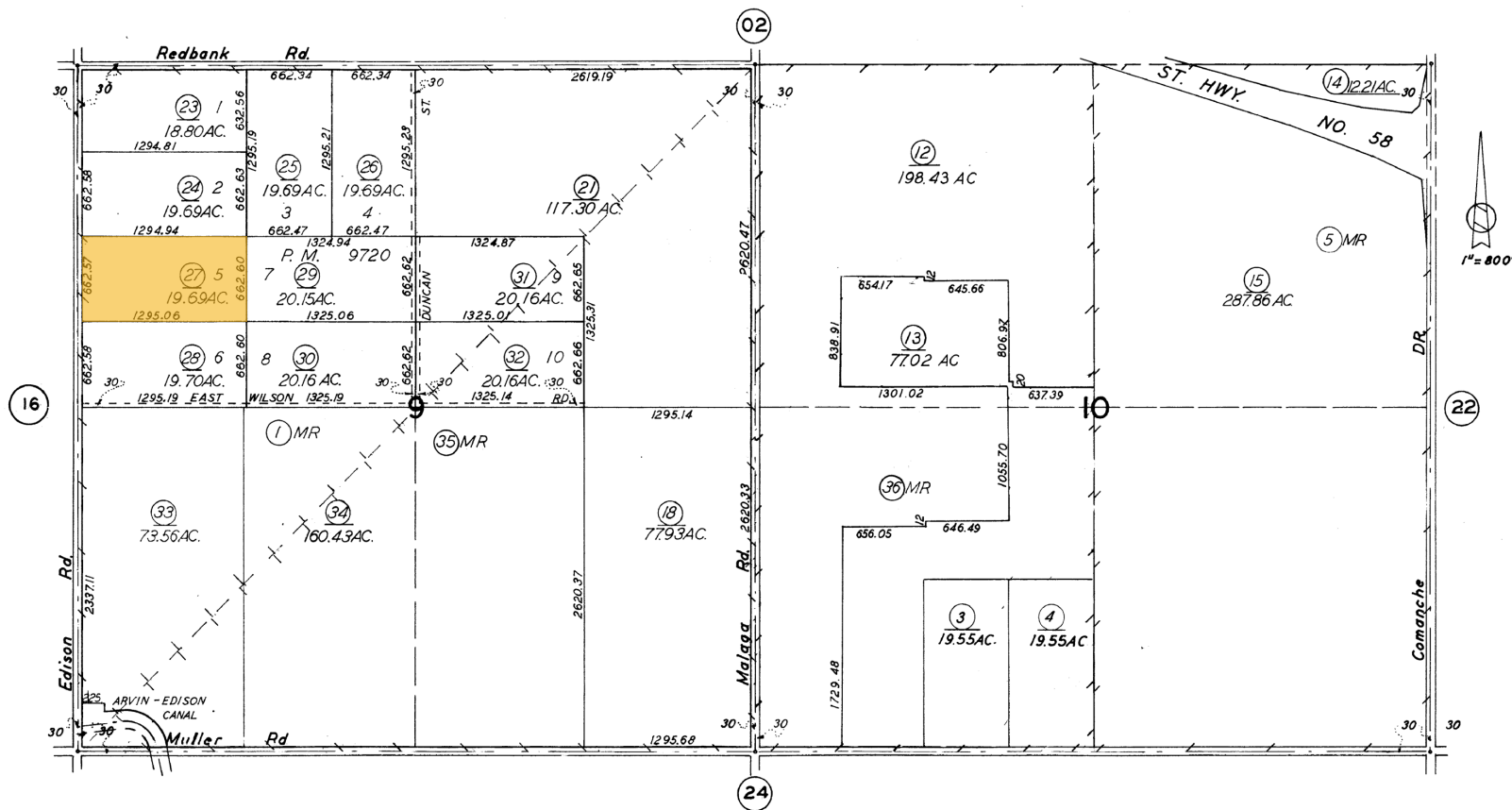
Kern County, CA

177-21

T.30 S. R.29 E.

SCHOOL DIST. 66-3

177-21



Revised: Aug. 14, 2008

Note: This map is for assessment purposes only. It is not to be construed as portraying legal ownership or divisions of land for purposes of zoning or subdivision law.

ASSESSORS MAP NO. 177-21
COUNTY OF KERN

177-210-27



Michael T. Anchordoquy, AAC • Principal • 661 616 3577 • manchor@asuassociates.com • CA RE #01380986
11601 Bolthouse Drive Suite 110 • Bakersfield, CA 93311 • 661 862 5454 main • 661 862 5444 fax

Edison 19.69 Acres Available For Sale

Ranch Aerial

Kern County, CA

Edison Road



Edison 19.69 Acres Available For Sale

Aerial Location Map

Kern County, CA

