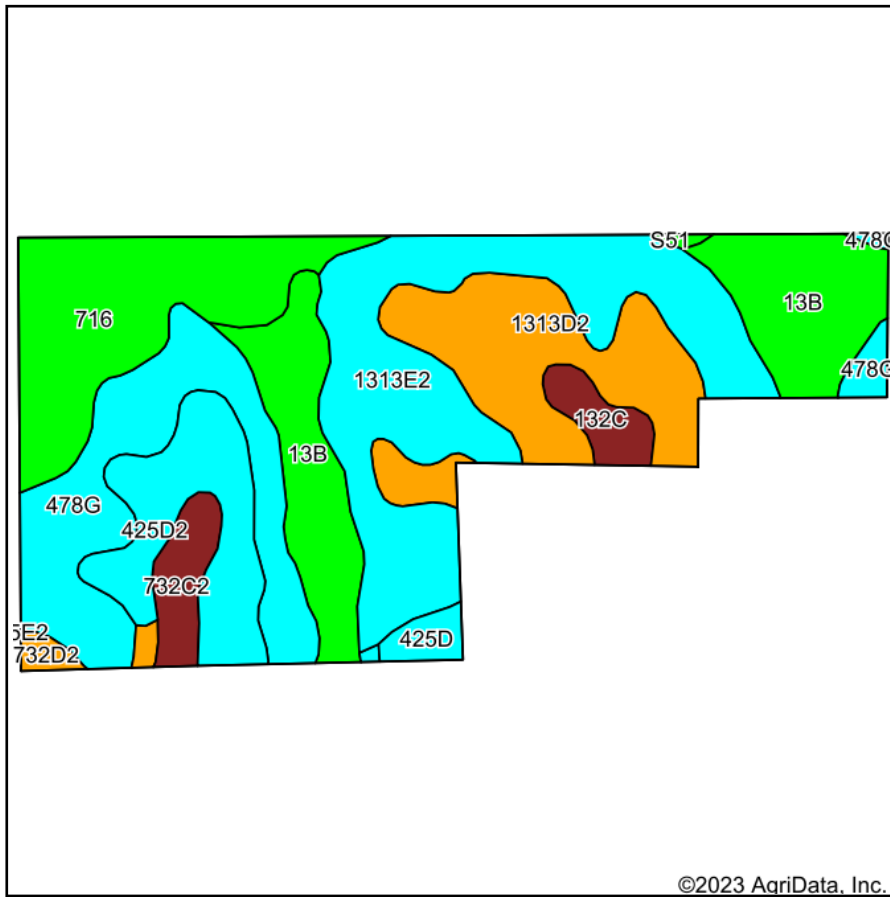
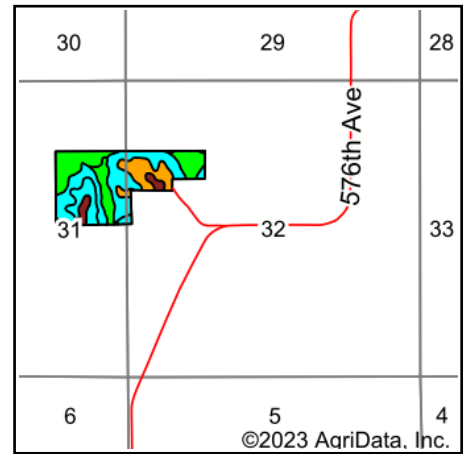


# Soils Map



Soils data provided by USDA and NRCS.



State: **Iowa**  
 County: **Monroe**  
 Location: **31-73N-18W**  
 Township: **Union**  
 Acres: **60**  
 Date: **3/27/2023**

**Hawkeye Farm Mgmt & Real Estate**



22 N Main, Albion IA Phone: 641-932-7796  
 Email: [hawkeye@uciowa.com](mailto:hawkeye@uciowa.com)  
 On the web: [www.uciowa.com](http://www.uciowa.com)  
[www.iowawhitetailfarms.com](http://www.iowawhitetailfarms.com)

Maps Provided By:



Area Symbol: IA135, Soil Area Version: 30

Code	Soil Description	Acres	Percent of field	CSR2 Legend	Non-Irr Class *c	CSR2**	CSR	*n NCCPI Soybeans
1313E2	Munterville silt loam, 14 to 18 percent slopes, moderately eroded	13.71	22.8%		Vle	22	5	39
13B	Olmitz-Colo-Vesser complex, 2 to 5 percent slopes	9.74	16.2%		Ilw	82	60	71
478G	Munterville-Rock outcrop complex, 14 to 40 percent slopes	9.52	15.9%		Vlle	5	5	6
716	Lawson-Quiver-Nodaway complex, 0 to 2 percent slopes, occasionally flooded	8.62	14.4%		Ilw	78		86
1313D2	Munterville silt loam, 9 to 14 percent slopes, moderately eroded	8.46	14.1%		Vle	34	10	42
425D2	Keswick loam, 9 to 14 percent slopes, moderately eroded	5.45	9.1%		IVe	9	12	36
732C2	Weller silty clay loam, 5 to 9 percent slopes, moderately eroded	1.70	2.8%		Ille	59	40	67
132C	Weller silt loam, 5 to 9 percent slopes	1.32	2.2%		Ille	59	44	73
425D	Keswick loam, 9 to 14 percent slopes	0.76	1.3%		IVe	8	16	44
732D2	Weller silty clay loam, 9 to 14 percent slopes, moderately eroded	0.60	1.0%		IVe	34	28	63
S51	Vesser silt loam, 0 to 2 percent slopes, occasionally flooded	0.12	0.2%		Ilw	75		94
<b>Weighted Average</b>					<b>4.55</b>	<b>39.5</b>	<b>*-</b>	<b>*n 47.8</b>

\*\*IA has updated the CSR values for each county to CSR2.

\*. CSR weighted average cannot be calculated on the current soils data, use prior data version for csr values.

\*n: The aggregation method is "Weighted Average using all components"

\*c: Using Capabilities Class Dominant Condition Aggregation Method

Soils data provided by USDA and NRCS.