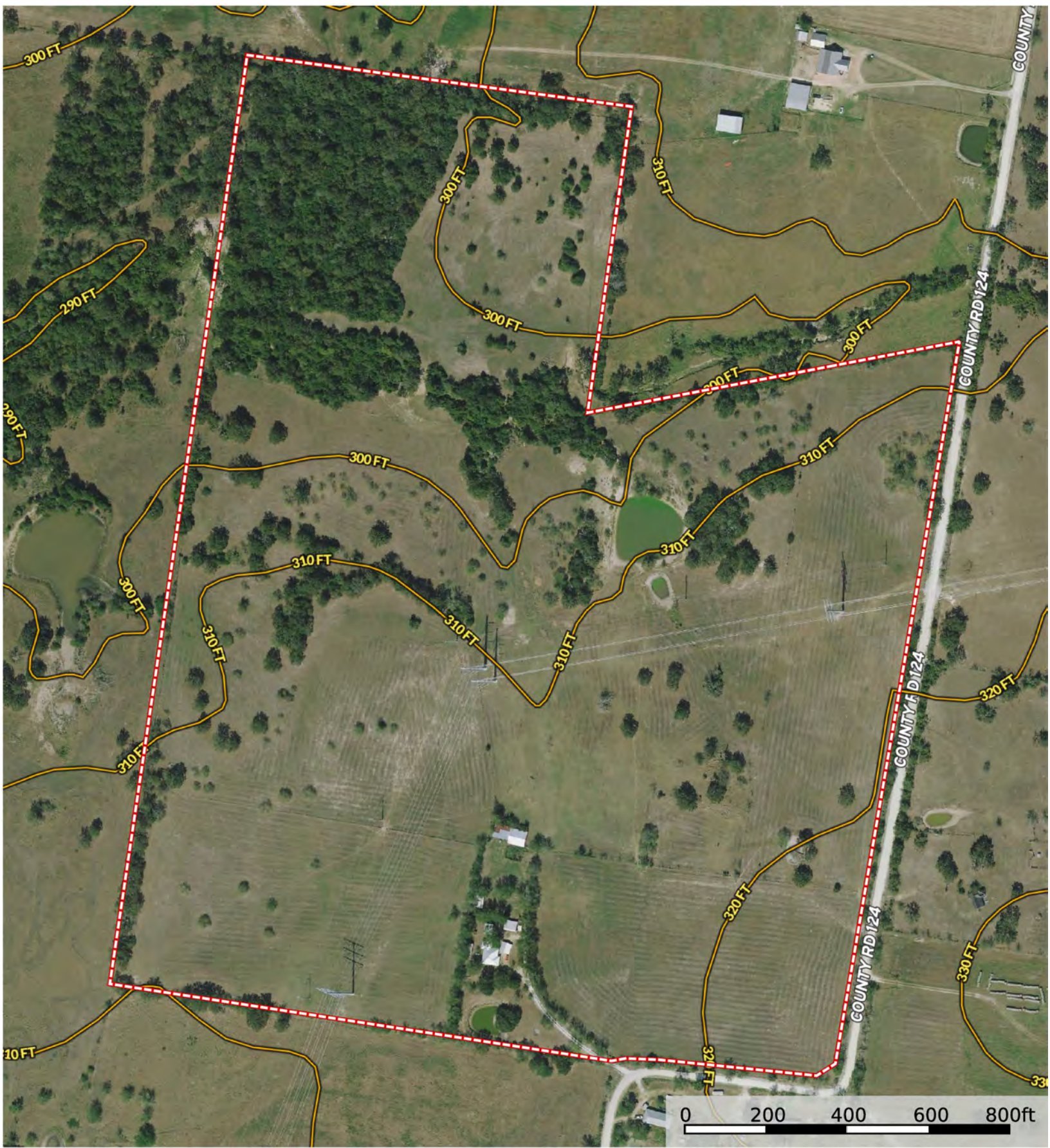

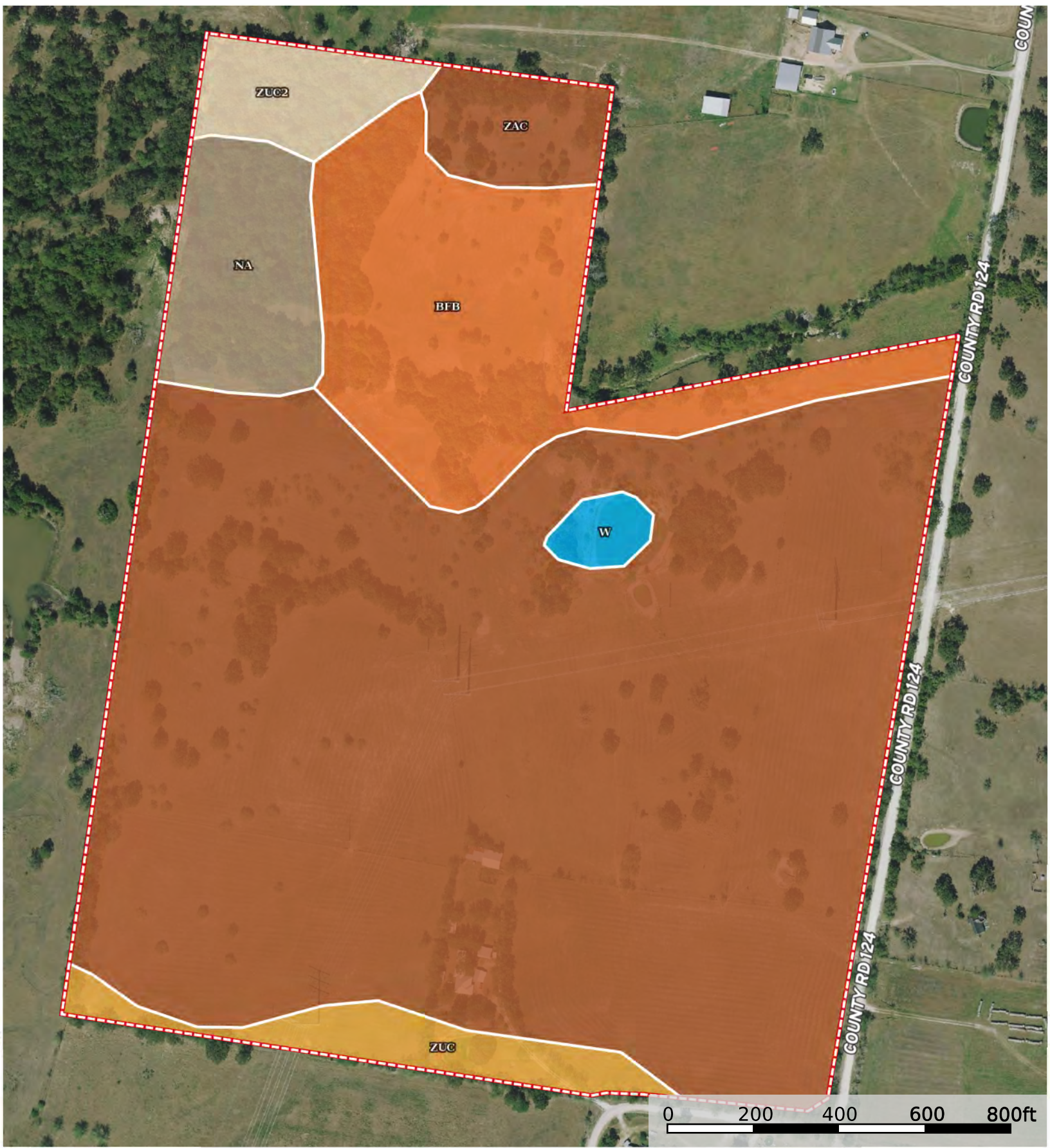
 Boundary




 Boundary

20367 County Rd 124
Grimes County, Texas, 84.75 AC +/-

Boundary 100 Year Floodplain 500 Year Floodplain Floodway Special Unmapped/ Not Included



 Boundary

| Boundary 84.93 ac

SOIL CODE	SOIL DESCRIPTION	ACRES	%	CPI	NCCPI	CAP
ZaC	Zack fine sandy loam, 1 to 5 percent slopes	62.34	73.4	0	35	4e
BfB	Boonville fine sandy loam, 1 to 3 percent slopes	12.04	14.18	0	41	3e
Na	Nahatche clay loam, frequently flooded	4.48	5.27	0	40	5w
ZuC	Zulch fine sandy loam, 1 to 5 percent slopes	2.86	3.37	0	48	3e
ZuC2	Zulch fine sandy loam, 1 to 5 percent slopes, eroded	2.47	2.91	0	46	4e
W	Water	0.74	0.87	0	-	-
TOTALS		84.93(*)	100%	-	36.57	3.88









(*) Total acres may differ in the second decimal compared to the sum of each acreage soil. This is due to a round error because we only show the acres of each soil with two decimal.

Capability Legend

Increased Limitations and Hazards

Decreased Adaptability and Freedom of Choice Users

Land, Capability

								
	1	2	3	4	5	6	7	8
'Wild Life'	•	•	•	•	•	•	•	•
Forestry	•	•	•	•	•	•	•	
Limited	•	•	•	•	•	•	•	
Moderate	•	•	•	•	•	•		
Intense	•	•	•	•	•			
Limited	•	•	•	•				
Moderate	•	•	•					
Intense	•	•						
Very Intense	•							

Grazing Cultivation

(c) climatic limitations (e) susceptibility to erosion

(s) soil limitations within the rooting zone (w) excess of water