

# DIVIDING WATER ROAD

Travelers Rest, SC 29690



REEDY LAND CO.

CHESTNUT MOUNTAIN TRACT 1 • FOR SALE



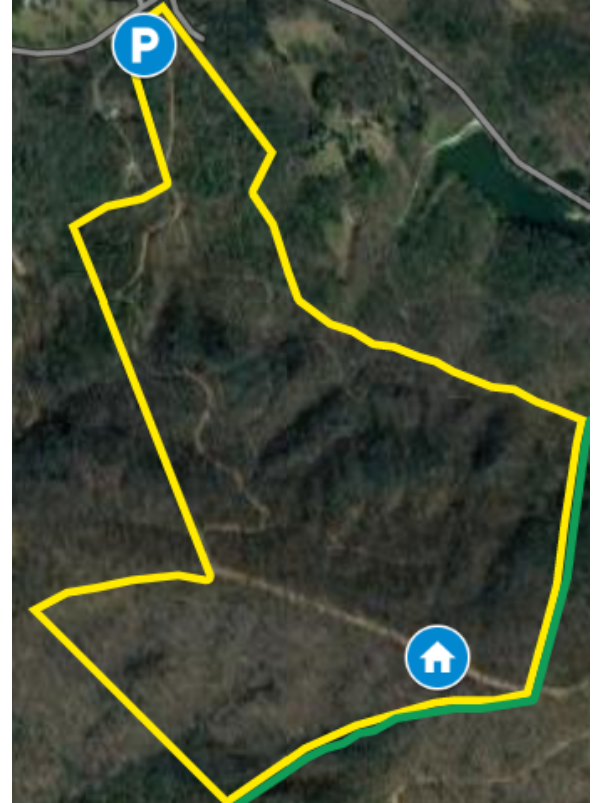
## PROPERTY HIGHLIGHTS

- A portion of Greenville County Tax Map # 0662110100105
- Road Frontage:  $\pm 300$  Linear Feet on Dividing Water Road
- Zoned for Award Winning Schools in Greenville County:
  - Tigerville Elementary School
  - Blue Ridge Middle School
  - Blue Ridge High School
- Heavily Wooded in Hardwoods & Pines featuring Creek Access & Breath Taking Mountain Views
- Utility Possibilities – Power, Water, Cable, Internet, Septic
- \*Acreage and Utility to be verified by Buyer or Buyer's Agent

## OFFERING SUMMARY

**Sale Price:** **\$1,320,800**

**Lot Size:**  **$\pm 127$  Acres**



**ANDERSON DRAKE**  
864.546.0342  
adrake@reedypg.com

**REEDY PROPERTY GROUP**  
P.O. Box 17009  
Greenville, SC 29606  
864.610.5869  
reedypropertygroup.com

# DIVIDING WATER ROAD

Travelers Rest, SC 29690

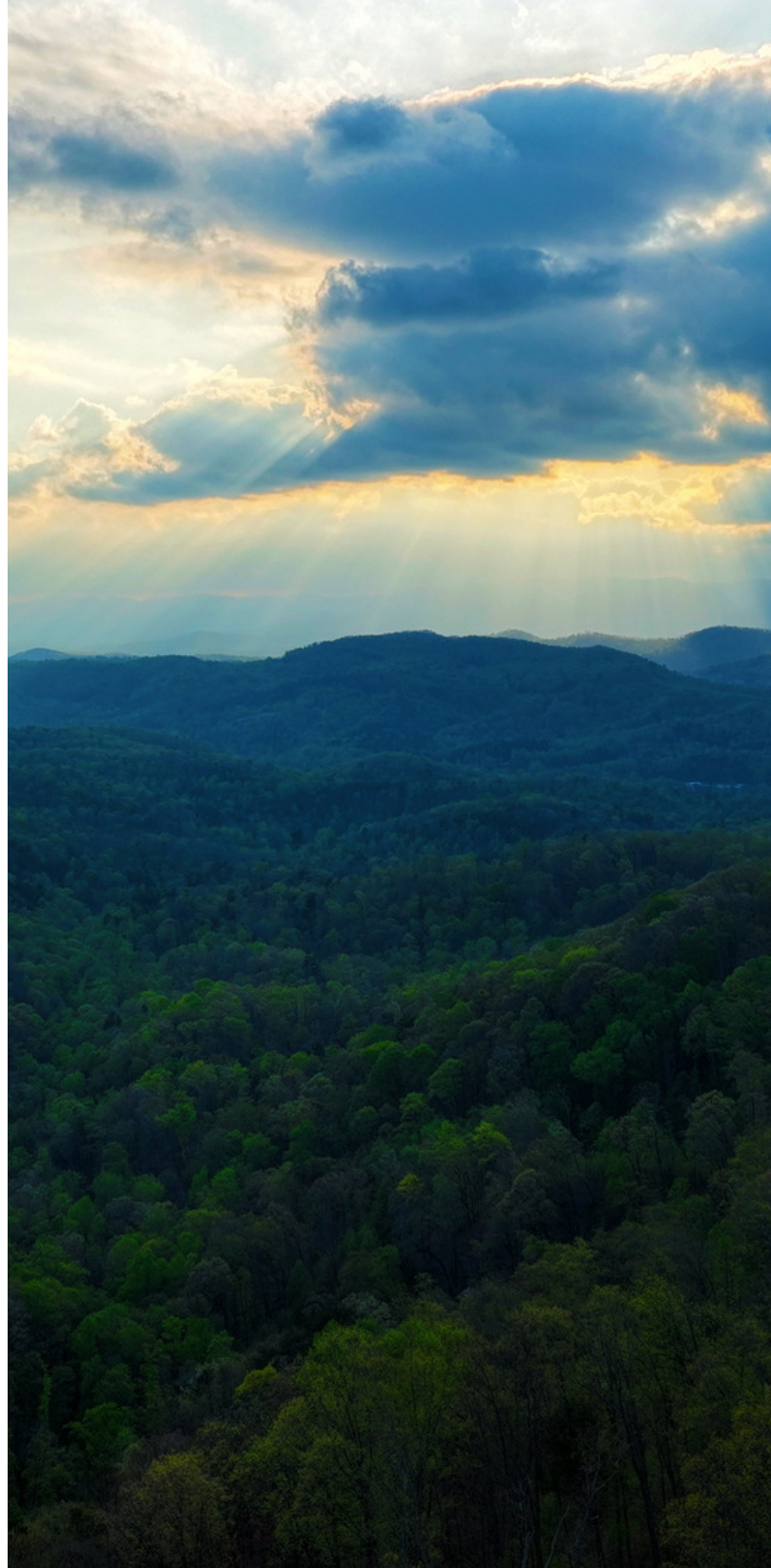
CHESTNUT MOUNTAIN TRACT 1 • FOR SALE



REEDY LAND CO.



Come experience the breathtaking beauty of Travelers Rest, renowned for its stunning vistas in Greenville County. Reedy Land Co invites you to seize an exceptional opportunity with our ±127-acre tract on Chestnut Mountain. This rare gem boasts a meticulously maintained road system that provides an enchanting, winding driveway leading up to your dream home. At the summit, you'll be treated to unparalleled 360-degree views of the Blue Ridge Mountains. And while you'll feel a world away, downtown Travelers Rest is just a 20-minute drive, offering access to all the delightful farmer's markets you could want. Meanwhile, you'll be only 30 minutes from Tryon or Saluda, affording you easy access to even more amenities. Don't miss out on this once-in-a-lifetime opportunity!



---

**ANDERSON DRAKE**  
864.546.0342  
adrake@reedypg.com

**REEDY PROPERTY GROUP**  
P.O. Box 17009  
Greenville, SC 29606  
864.610.5869  
reedypropertygroup.com

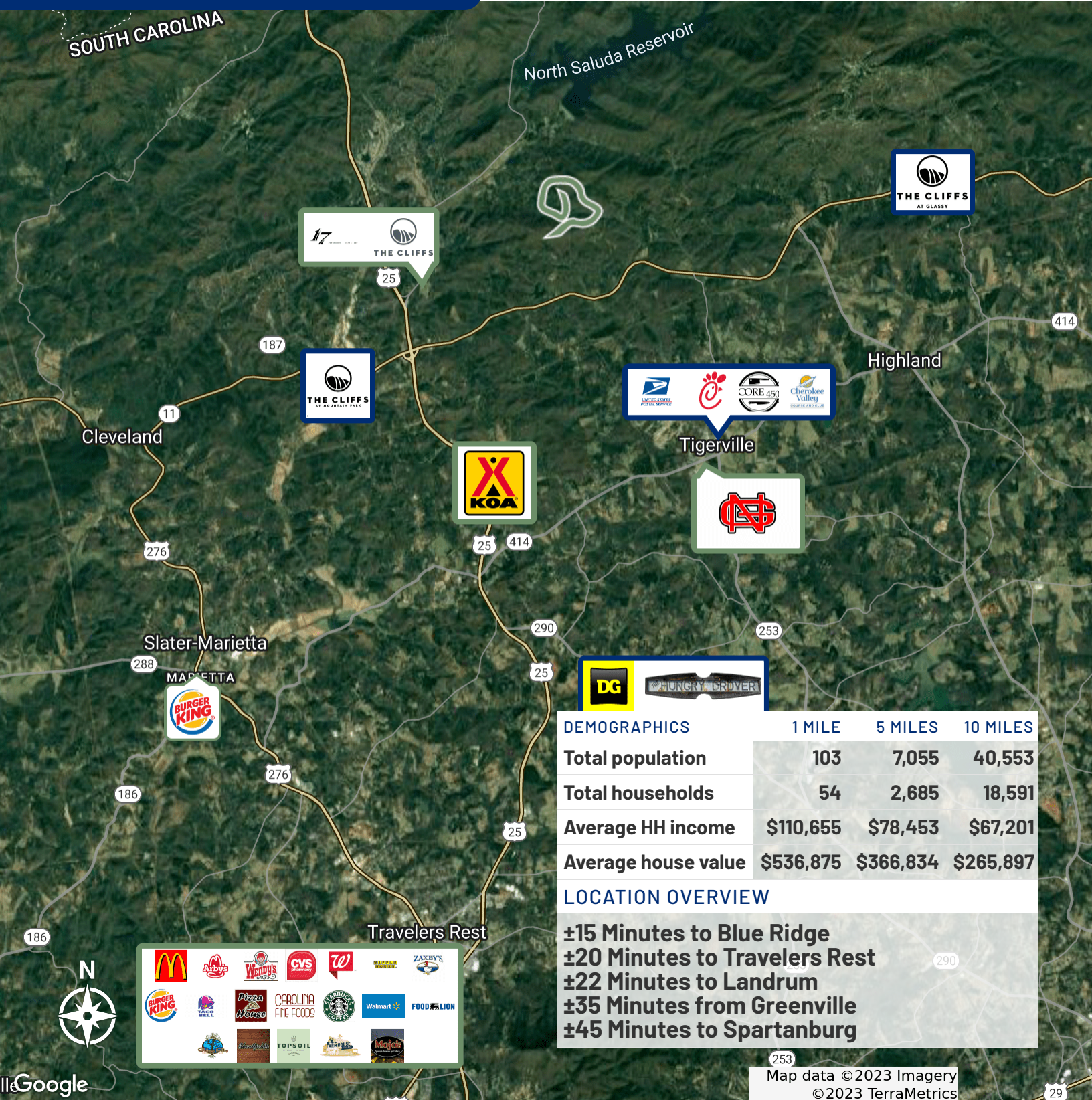
# DIVIDING WATER ROAD

Travelers Rest, SC 29690



REEDY LAND CO.

CHESTNUT MOUNTAIN TRACT 1 • FOR SALE



**ANDERSON DRAKE**  
864.546.0342  
adrake@reedypg.com

**REEDY PROPERTY GROUP**  
P.O. Box 17009  
Greenville, SC 29606  
864.610.5869  
reedypg.com

# DIVIDING WATER ROAD

Travelers Rest, SC 29690

CHESTNUT MOUNTAIN TRACT 1 • FOR SALE



REEDY LAND CO.



**ANDERSON DRAKE**  
864.546.0342  
adrake@reedypg.com

**REEDY PROPERTY GROUP**  
P.O. Box 17009  
Greenville, SC 29606  
864.610.5869  
reedypg.com