

SEDGWICK COUNTY LAND FOR SALE

Location: N & W of W 79th St S and S 183rd St W, Viola, KS 67149

**GREAT POTENTIAL HOME SITE - HUNTING OPPORTUNITIES
TIMBER - SEASONAL CREEK - BLACKTOP ROAD - PASTURE AREA
CLOSE DISTANCE TO WICHITA, KS AND SURROUNDING TOWNS**



Price: \$ 355,000.00

Acres: 41.6 +/- Acres

School District: Clearwater 264

**Mineral Rights: Seller's interest transfers
with the real estate.**

2022 Taxes: To be determined

Legal Description: Located in 5-29-2W.

Contact agent for recent survey & Legal



ReeceNichols
SOUTH CENTRAL KANSAS
An Independently Owned and Operated Member of the Reece & Nichols Alliance, Inc.



Jake Steven, ALC
316.708.5960
jake@reecenichols.com



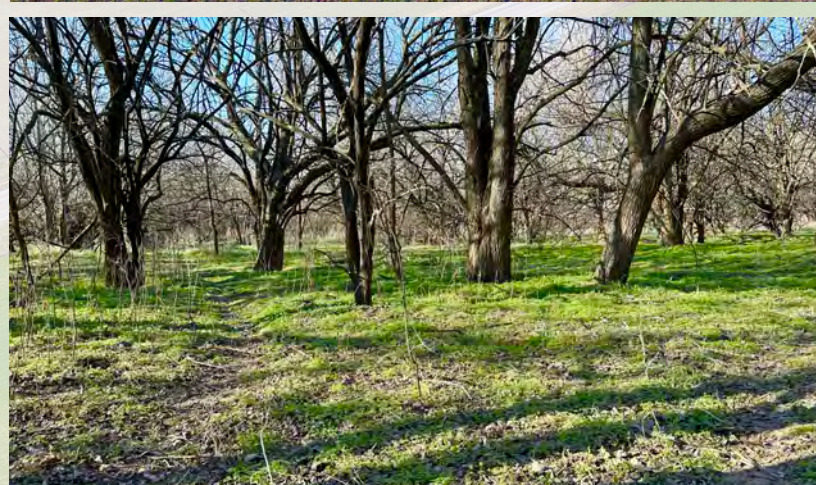
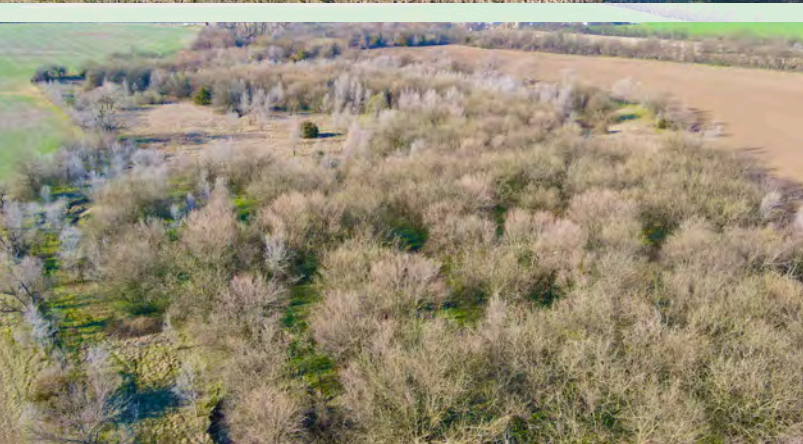
John Rupp, ALC
316.250.5198
johnrupp@reecenichols.com



Carolyn Timsah
316.214.8682
carolyn@reecenichols.com

SEDGWICK COUNTY LAND FOR SALE

Location: N & W of W 79th St S and S 183rd St W, Viola, KS 67149



SEDGWICK COUNTY LAND FOR SALE

Location: N & W of W 79th St S and S 183rd St W, Viola, KS 67149



ReeceNichols
SOUTH CENTRAL KANSAS
An independently Owned and Operated Member of the Reece & Nichols Alliance, Inc.



Jake Steven, ALC
316.708.5960
jake@reecenichols.com



John Rupp, ALC
316.250.5198
johnrupp@reecenichols.com



Carolyn Timsah
316.214.8682
carolyn@reecenichols.com