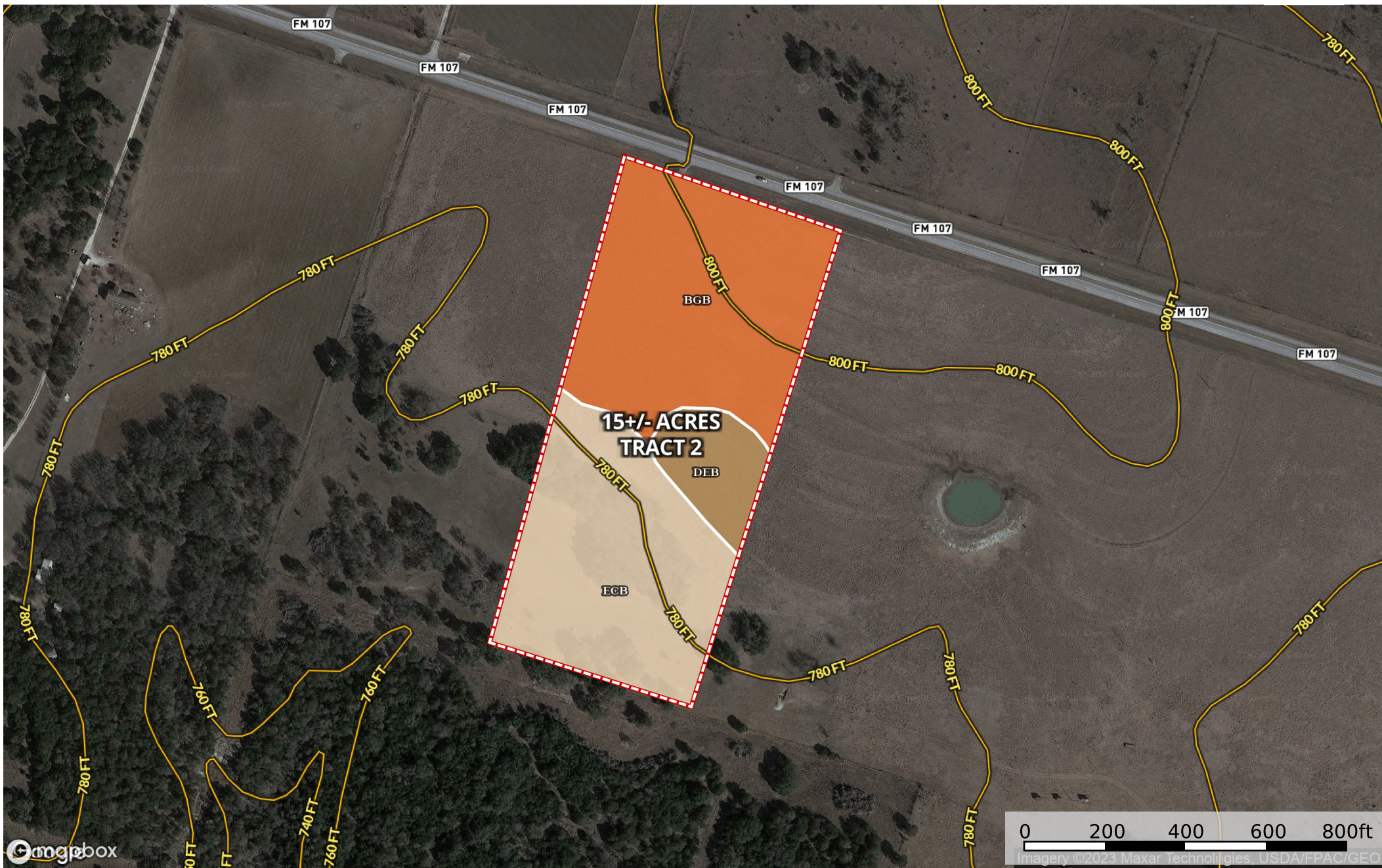



Luedtke - Tract 2 FM 107 15+/- Acres
Coryell County, Texas, 15 AC +/-



 Boundary



The information contained herein was obtained from sources deemed to be reliable. MapRight Services makes no warranties or guarantees as to the completeness or accuracy thereof.

|  Boundary 15.55 ac

SOIL CODE	SOIL DESCRIPTION	ACRES	%	CPI	NCCPI	CAP
BgB	Bolar gravelly clay loam, 1 to 4 percent slopes	7.37	47.4	0	36	3e
EcB	Eckrant very cobbly silty clay, 1 to 5 percent slopes, very stony	6.69	43.02	0	13	4s
DeB	Denton silty clay, 1 to 3 percent slopes	1.49	9.58	0	43	3e
TOTALS		15.55(*)	100%	-	26.78	3.43









(*) Total acres may differ in the second decimal compared to the sum of each acreage soil. This is due to a round error because we only show the acres of each soil with two decimal.

Capability Legend

Increased Limitations and Hazards

Decreased Adaptability and Freedom of Choice Users

Land, Capability

								
	1	2	3	4	5	6	7	8
'Wild Life'	•	•	•	•	•	•	•	•
Forestry	•	•	•	•	•	•	•	
Limited	•	•	•	•	•	•	•	
Moderate	•	•	•	•	•	•		
Intense	•	•	•	•	•			
Limited	•	•	•	•				
Moderate	•	•	•					
Intense	•	•						
Very Intense	•							

Grazing Cultivation

(c) climatic limitations (e) susceptibility to erosion

(s) soil limitations within the rooting zone (w) excess of water