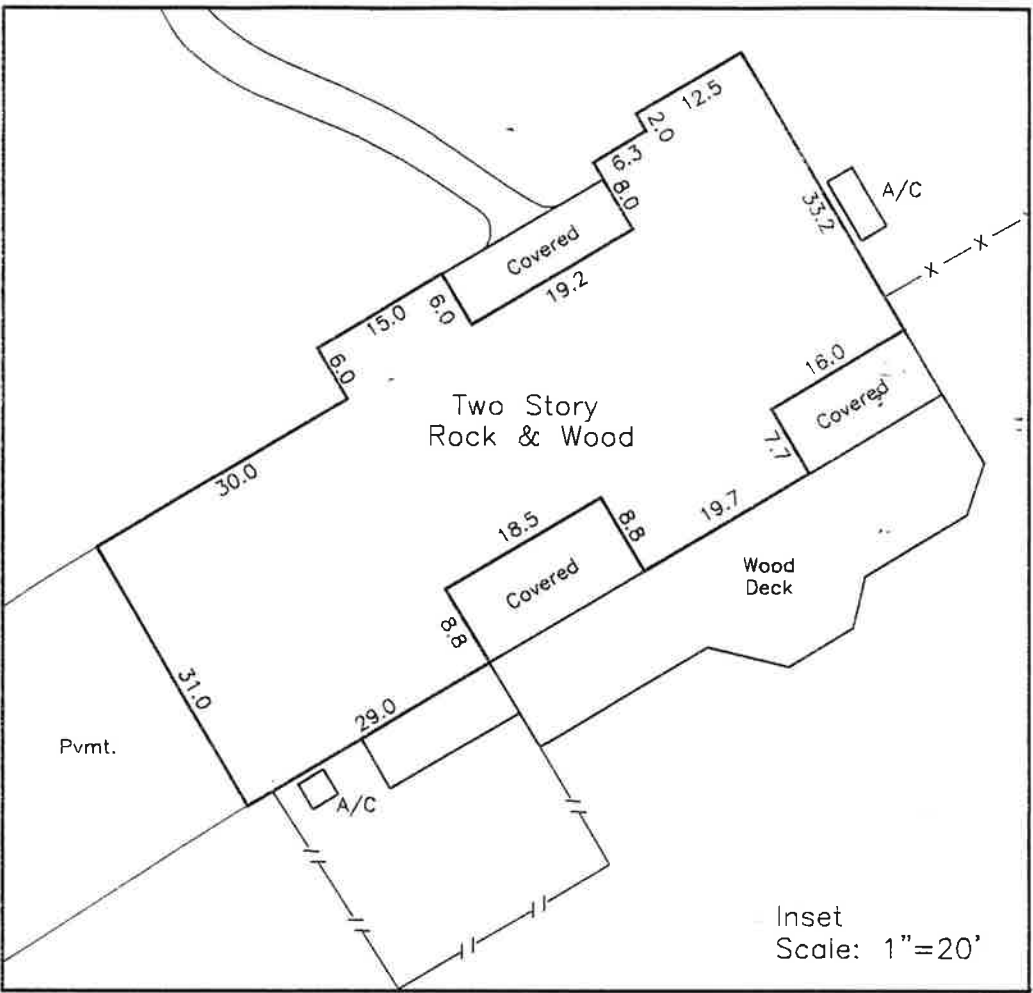
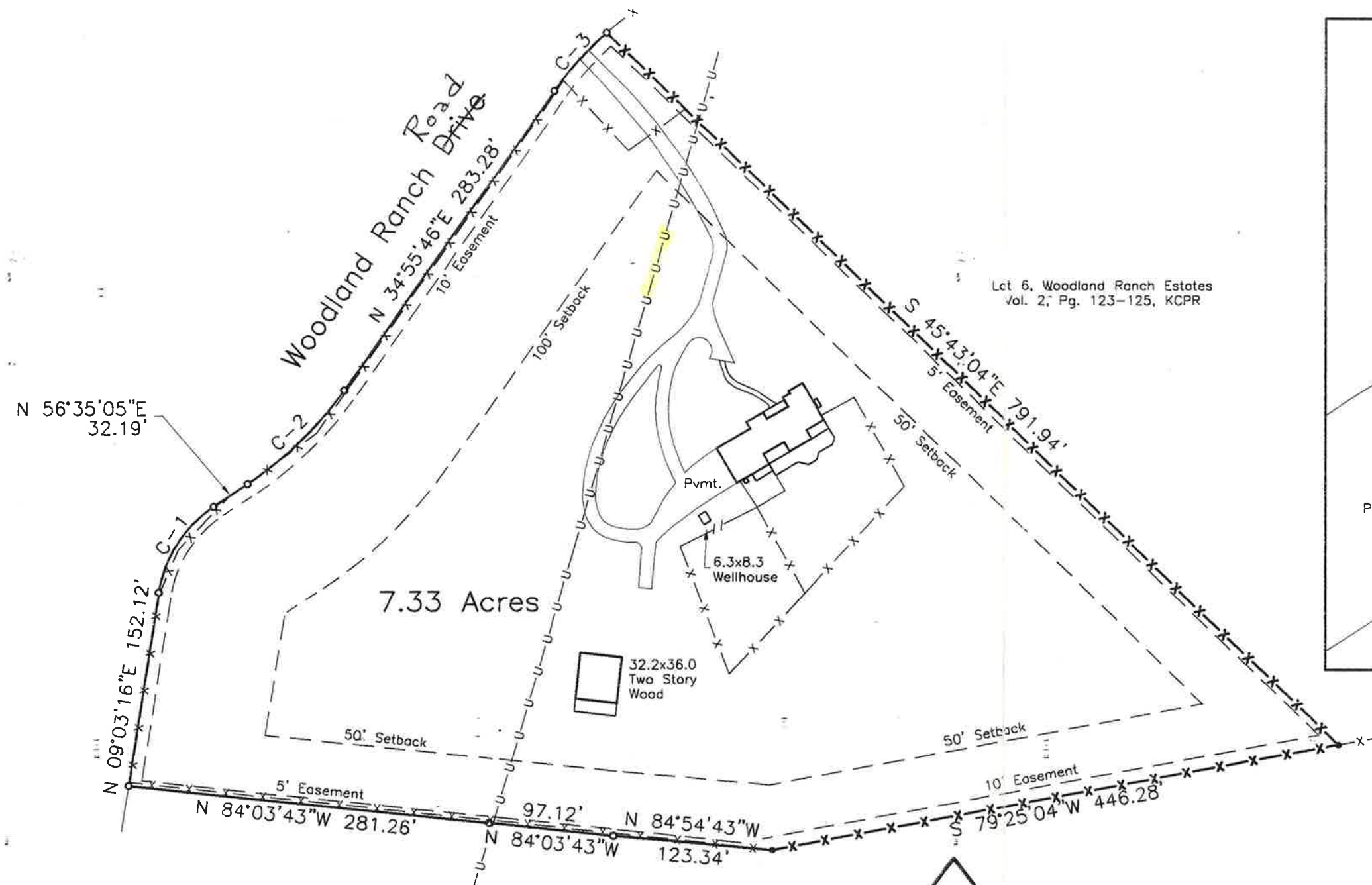


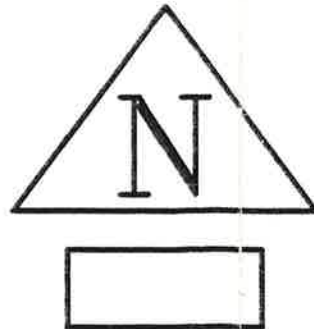
CAPTION



CURVE	RADIUS	LENGTH	DELTA	CHORD	CH.BEARING
1	98.59'	81.78'	47°31'46"	79.46'	N 32°49'09"E
2	276.35'	104.55'	21°40'34"	103.93'	N 45°39'31"E
3	249.79'	60.86'	13°57'39"	60.71'	N 41°54'00"E

- Notes:
1. \circ indicates 1/2" steel rod set, unless otherwise noted.
 2. \bullet indicates 1/2" steel rod found.
 3. KCPR = Kendall County Plat Records.
 4. KCOR = Kendall County Official Records.
 5. * This bearing, used as the bearing basis for this survey is from plat recorded in Vol. 2, Pg. 123-125, KCPR.
 6. —X—X— indicates wire fence on or near this line.
 7. —U—U— indicates overhead utility line.
 8. —//— indicates wood and wire fence.
 9. Woodland Ranch Drive established by subdivision plat.

Pt. of Lot 4
Richard B. Yarborough
Vol. 459, Pg. 662, KCOR



SCHWARZ ENGINEERING & SURVEYING, INC.
723 N. MAIN
830-249-8907
BOERNE, TEXAS 78006
FAX: 830-249-3921

I certify that this plat is of a survey made on the ground under my supervision on January 27 & 31, 2000 and that there are no visible easements or encroachments except as shown.

James E. Schwarz
Registered Professional
Land Surveyor No. 4760

Job No. 00-024