



FOR SALE 30 ACRES

30280 W 191ST

GARDNER, KS 66030

DICK STEPHENS

📞 913.485.8732

📠 913.491.3366

✉️ ds@reececommercial.com

JIB FELTER

📞 913.333.7830

✉️ jib@reececommercial.com



30280 W 191ST STREET, GARDNER, KS 66030

PRICE	4,247,100
ACRES	30

PROPERTY INFORMATION

ZONING	Presently not zoned. Future land use plan shows light industrial/office.
UTILITIES	See Attached utility map shown. The location of sewer lines, water line, gas line and storm sewer line
TRACTS	Owner will sell off in 10 acres tracts
TERRAIN	Flat
AD. POTENTIAL USE	Multi family apartments
NEW STREET	Presently under construction is 188th street from Gardner road to 191st street. Next phase is for 191st street to be improved.
AREA	Property is less than one quater mile from Intermodel Park

DEMOGRAPHICS

	1 MILE	3 MILES	5 MILES
20' Population	1,707	21,239	28,215
20' Med HH Income	\$102,156	\$81,879	\$82,196

DICK STEPHENS

913.485.8732

913.491.3366

ds@reececommercial.com

JIB FELTER

913.333.7830

jib@reececommercial.com



30280 W 191ST STREET, GARDNER, KS 66030

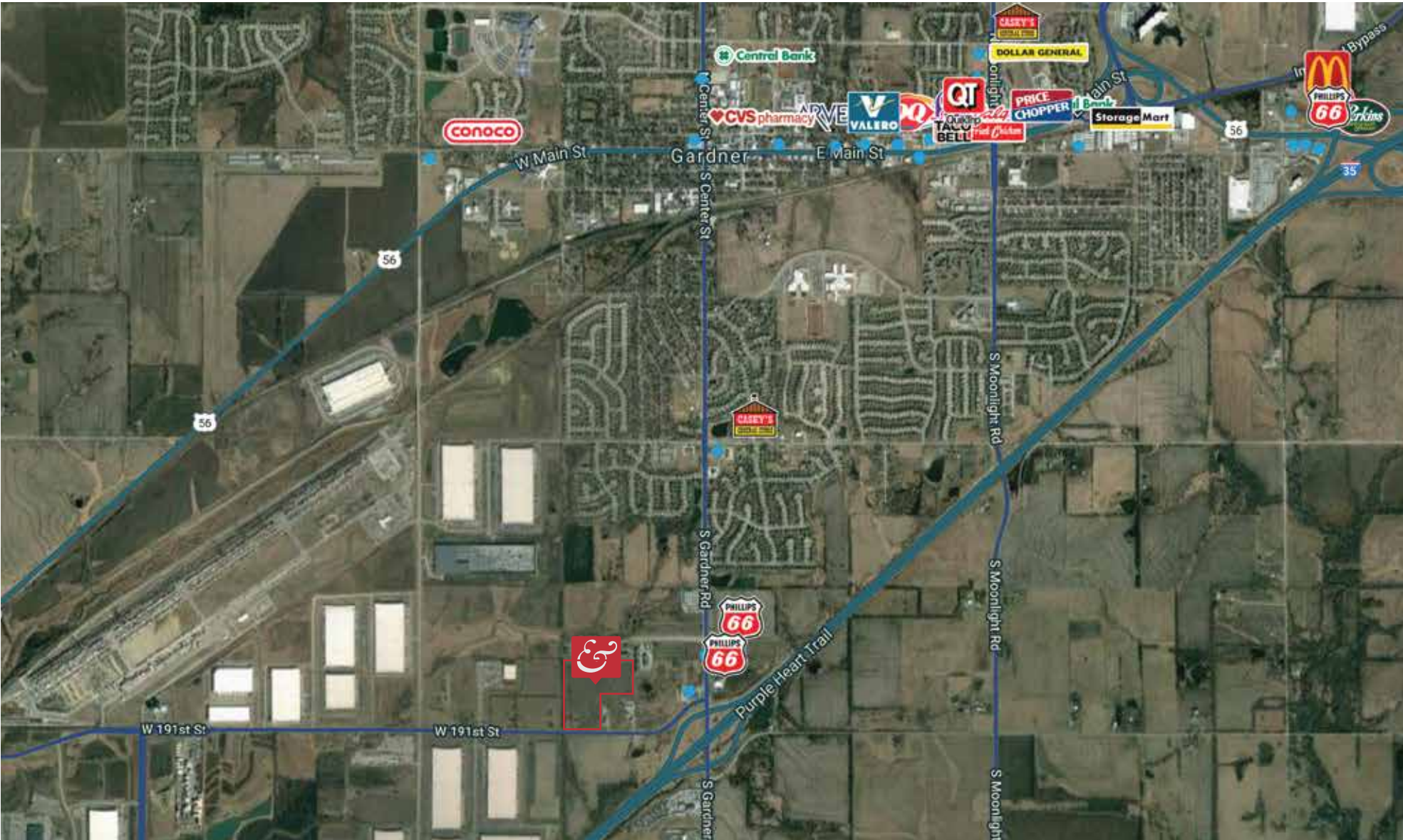
UTILITY MAP





30280 W 191ST STREET, GARDNER, KS 66030

AERIAL



The Information Above Has Been Obtained From Sources Believed Reliable. While We Do Not Doubt Its Accuracy We Have Not Verified It And Make No Guarantee, Warranty Or Representation About It. It Is Your Responsibility To Independently Confirm Its Accuracy And Completeness. Any Projections, Opinions, Assumptions, Or Estimates Used Are For Example Only And Do Not Represent The Current Or Future Performance Of The Property. You And Your Advisors Should Conduct A Careful, Independent Investigation Of The Property To Determine To Your Satisfaction The Suitability Of The Property For Your Needs. © 2020