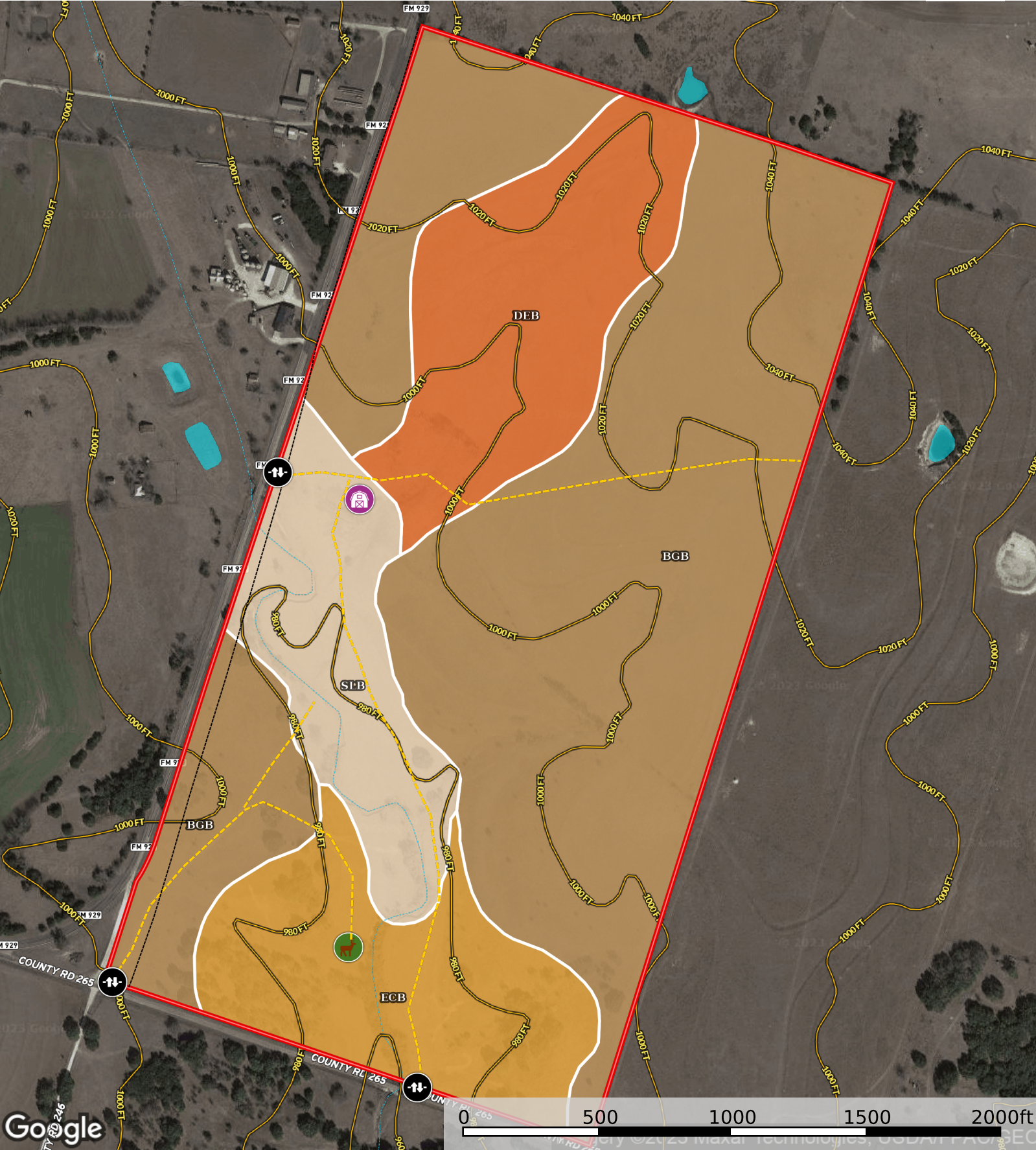


Barnhill TBD 929 164.31 Acres
Coryell County, Texas, 164.31 AC +/-



Feeder

Barn

Gate

Transmission Line

Road / Trail

Boundary

100 Year Floodplain

500 Year Floodplain

Floodway

Special

Unmapped/ Not Included

Stream, Intermittent

River/Creek

Water Body

Boundary 161.2 ac

SOIL CODE	SOIL DESCRIPTION	ACRES	%	CPI	NCCPI	CAP
BgB	Bolar gravelly clay loam, 1 to 4 percent slopes	95.76	59.4	0	36	3e
DeB	Denton silty clay, 1 to 3 percent slopes	24.4	15.14	0	43	3e
EcB	Eckrant very cobbly silty clay, 1 to 5 percent slopes, very stony	22.84	14.17	0	13	4s
SIB	Slidell silty clay, 0 to 2 percent slopes	18.2	11.29	0	42	3e
TOTALS		161.2(*)	100%	-	34.48	3.14









(*) Total acres may differ in the second decimal compared to the sum of each acreage soil. This is due to a round error because we only show the acres of each soil with two decimal.

Capability Legend

Increased Limitations and Hazards

Decreased Adaptability and Freedom of Choice Users

Land, Capability

								
	1	2	3	4	5	6	7	8
'Wild Life'	•	•	•	•	•	•	•	•
Forestry	•	•	•	•	•	•	•	
Limited	•	•	•	•	•	•	•	
Moderate	•	•	•	•	•	•		
Intense	•	•	•	•	•			
Limited	•	•	•	•				
Moderate	•	•	•					
Intense	•	•						
Very Intense	•							

Grazing Cultivation

(c) climatic limitations (e) susceptibility to erosion

(s) soil limitations within the rooting zone (w) excess of water