



## FARM & RANCH

**A FANTASTIC HOME THAT IS  
PRIVATELY SITUATED AMONG THE  
TREES ON A LITTLE OVER 8 ACRES**

**612 Sosebee Bend Rd. – Weatherford, TX**



**STEPHEN  
REICH GROUP**  
WILLIAMS TREW REAL ESTATE

**WilliamTrew**   
A DIVISION OF EBBY HALLIDAY REAL ESTATE, INC.

LISTED BY **STEPHEN REICH GROUP** OF WILLIAMS TREW REAL ESTATE

# PROPERTY SUMMARY

## DESCRIPTION

Sunsets for miles. This fantastic home is privately situated among the trees on a little over 8 acres in Parker County. 5 bedrooms, 3 bathrooms and flexible floorplan allows for the homeowner to enjoy country living and only 5 minutes from downtown Weatherford or I 20. This location is the key to this property. Open flow, kitchen has bar seating, double ovens and refrigerator is negotiable. There are two dining spaces and either a 5th bedroom or space for office or gameroom. Step outside, listen to the birds and enjoy the fresh air on the 12 by 20 covered back patio which is a great spot for bar b ques, entertaining or simply relaxing. If you are a hobbyist, collector or need the extra space the shop is 30 by 40 and has electricity, storage and plumbing is stubbed. The overhang on the shop would be easily converted to shed row stalls. Horses, cattle and other livestock allowed. No restrictions.

## LOCATION

City	Weatherford
County	Parker
Schools	Weatherford ISD

Driving Directions      Take 180 heading west from Weatherford Square. Turn Right on Garner Rd. Left on Sosebee Bend. The house will be on the left.

## OFFER SUMMARY

List Price	\$845,000
Lot Size	8.174 acres
Utilities	Septic

## HIGHLIGHTS

- 8.174 ACRES
- NO RESTRICTIONS
- 2,880 SF • 5 BEDROOMS • 3 BATHROOMS
- 12X20 COVERED BACK PATIO
- 30X40 SHOP W/ELECTRIC
- BRING YOUR HORSES & OTHER LIVESTOCK

## LISTING PRESENTED BY:



**PROPERTY WEBSITE LINK:**  
[stephenreichgroup.com/20260340](http://stephenreichgroup.com/20260340)



**STEPHEN REICH**  
**817-597-8884**  
[stephen.reich@williamstrew.com](mailto:stephen.reich@williamstrew.com)

**KANDY HALE MABERRY**  
**940-456-3251**  
[kandy.maberry@williamstrew.com](mailto:kandy.maberry@williamstrew.com)



**PARKER COUNTY OFFICE**  
400 Shops Boulevard, Ste. 200  
Willow Park, TX 76087

**FARM & RANCH • RESIDENTIAL • COMMERCIAL-DEVELOPMENT • LAND**



# PROPERTY PHOTOS



STEPHEN REICH – 817.597.8884



WilliamsTrew  
A DIVISION OF EBBY HALLIDAY REAL ESTATE, INC.



# PROPERTY PHOTOS



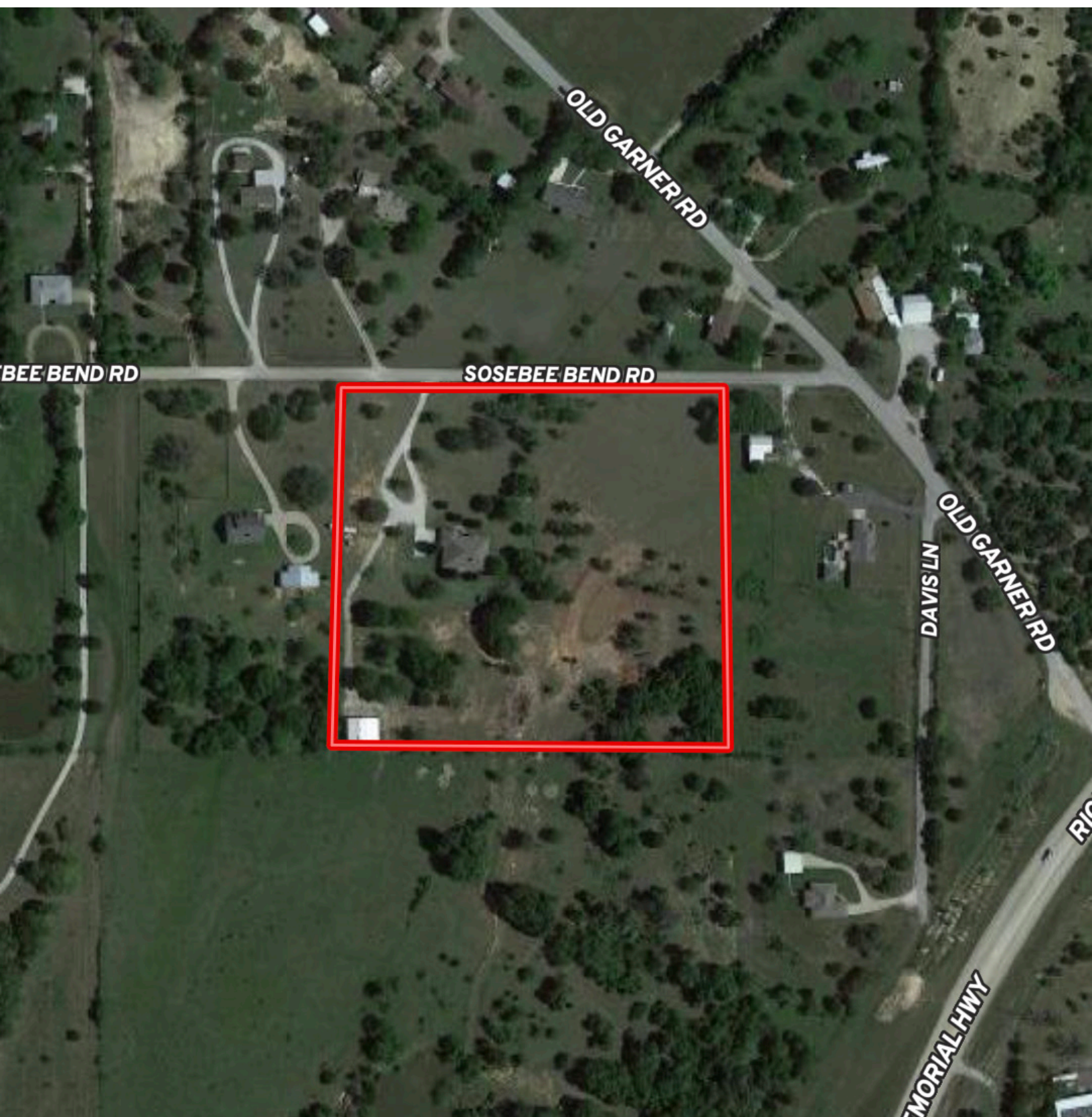
STEPHEN REICH – 817.597.8884



WilliamsTrew  
A DIVISION OF EBBY HALLIDAY REAL ESTATE, INC.



# AERIAL MAP





# CONTOUR LINES & FLOODPLAIN

