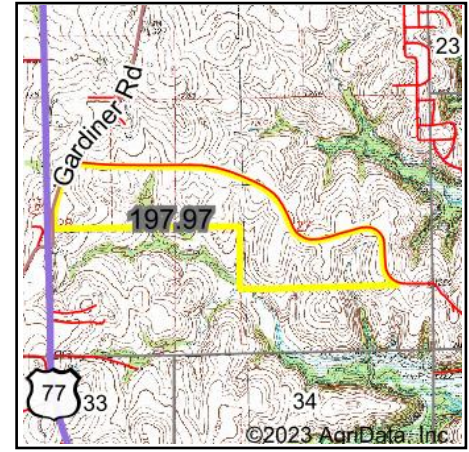
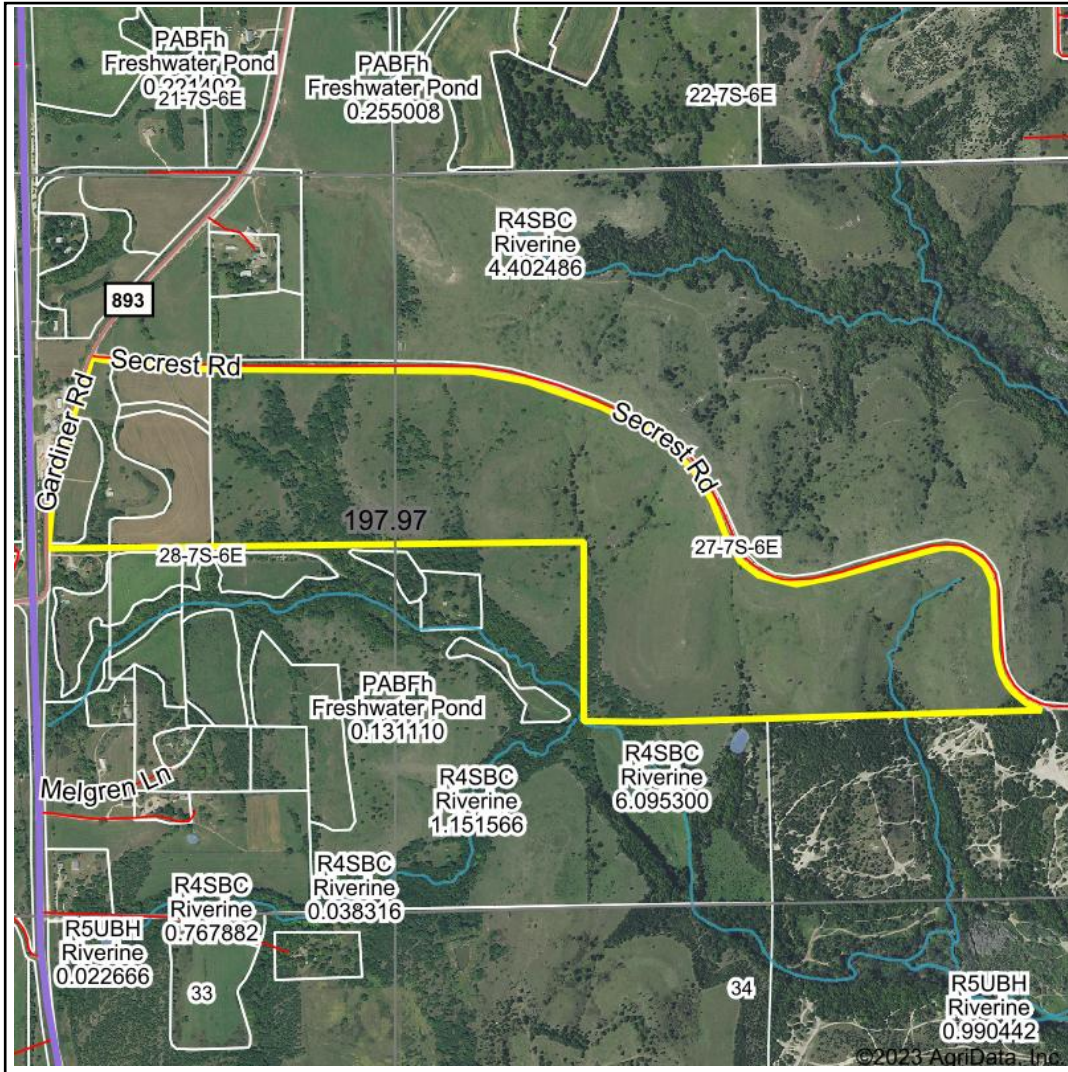


Wetlands Map



State: **Kansas**
 Location: **27-7S-6E**
 County: **Riley**
 Township: **Jackson**
 Date: **2/22/2023**



Maps Provided By:



© AgriData, Inc. 2021

www.AgriDataInc.com



0ft 1567ft 3135ft

Classification Code	Type	Acres
R4SBC	Riverine	0.59
Total Acres		0.59

Data Source: National Wetlands Inventory website. U.S. DoI, Fish and Wildlife Service, Washington, D.C. <http://www.fws.gov/wetlands/>