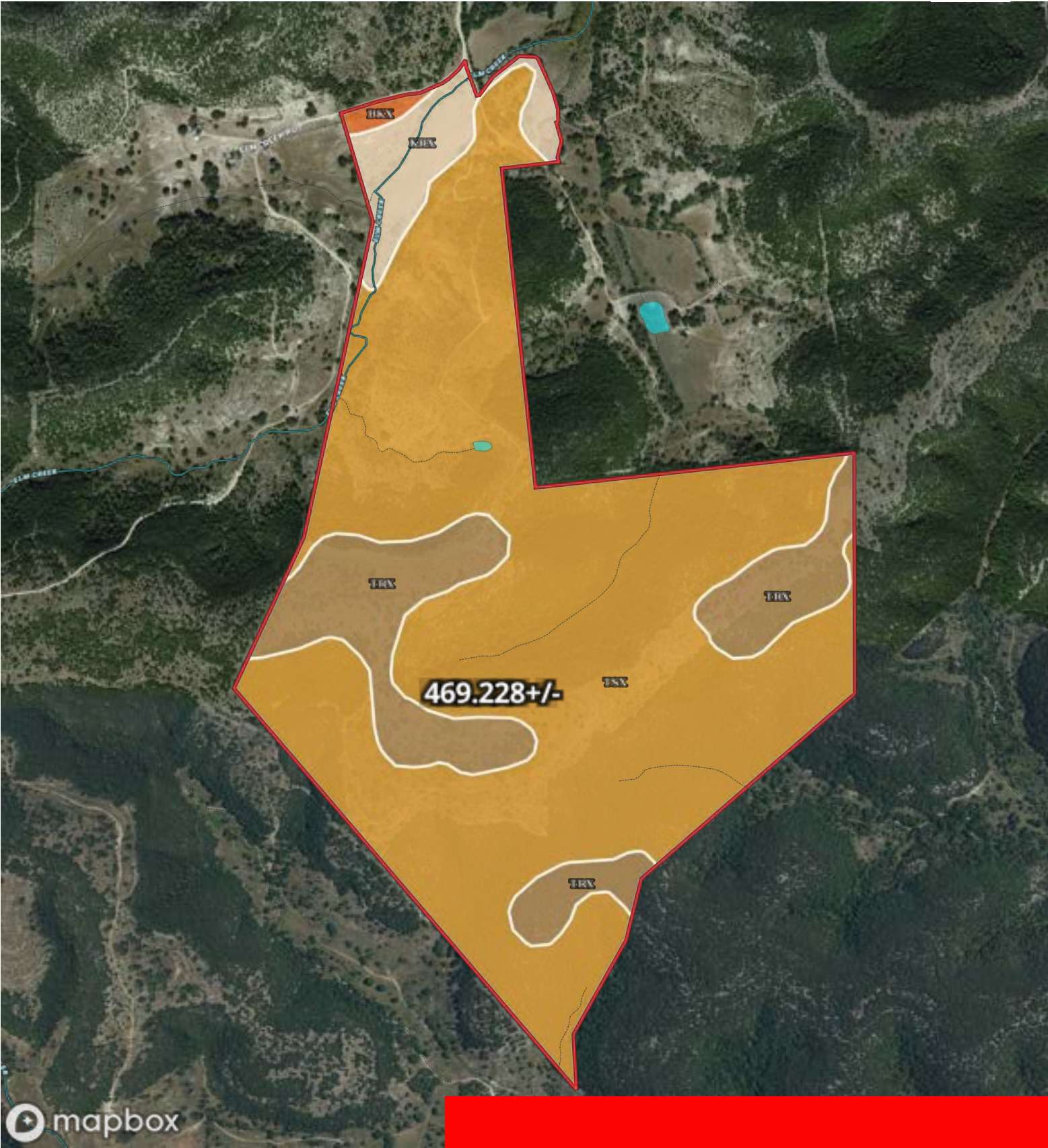


3248 Elm Creek Rd Medina,TX 78055
Bandera County, Texas, 469.228 AC +/-



 469 . 228 +/-  Stream, Intermittent  River/Creek  Water Body

I 469.228+/-

SOIL CODE	SOIL DESCRIPTION	ACRES	%	CPI	NCCPI	CAP
TSX	Eckrant-Rock outcrop complex, 15 to 60 percent slopes	364.3	77.83	0	2	7e
TRX	Eckrant-Rock outcrop association, 1 to 10 percent slopes	76.69	16.39	0	9	7e
KRX	Krum-Pratley association, gently undulating	24.18	5.17	0	44	3e
BKX	Kerrville gravelly clay loam, 1 to 8 percent slopes	2.88	0.62	0	25	4e
TOTALS		468.0 5(*)	100%	-	5.46	6.77

(*) Total acres may differ in the second decimal compared to the sum of each acreage soil. This is due to a round error because we only show the acres of each soil with two decimal.

