



# PANDORA FARM

PANDORA PL  
PLANT CITY, FL 33566

---

Jerrod Parker

O: 877.518.5263 x392 | C: 813.967.2862

[jerrod.parker@svn.com](mailto:jerrod.parker@svn.com)



# Property Overview



Sale Price

**\$650,000**

## OFFERING SUMMARY

Acreage:	13.47 Acres
Price / Acre:	\$48,255
City:	Plant City
County:	Hillsborough
Property Type:	Farm

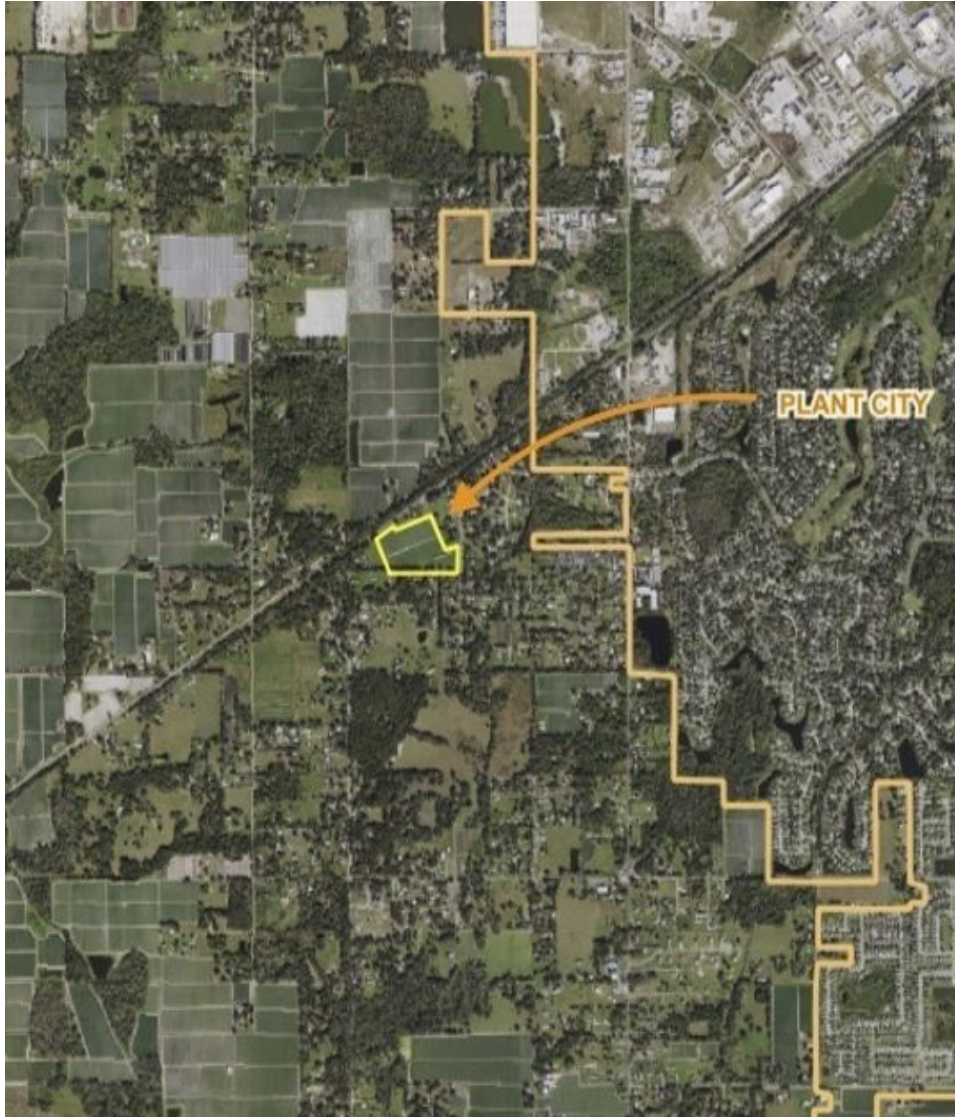
## PROPERTY OVERVIEW

Pandora Farm is an exceptional turnkey strawberry farm located just outside the city limits of Plant City, FL, in the agriculturally rich area of Hillsborough County. Boasting several decades of successful production, this farm presents a unique opportunity for aspiring farmers or seasoned growers looking to expand their operations. Encompassing a total land area of 13.47 acres, this well-maintained property is ready for immediate use. The zoning designation of AS-1/R-1 provides flexibility for various agricultural and residential possibilities. Whether you wish to continue its strawberry production legacy or explore other agricultural ventures, the options are vast.

Equipped with essential farming infrastructure, this property features an 8" well with overhead irrigation, ensuring a reliable water supply for your crops. Electricity is readily available on-site, streamlining farming operations and offering convenience for future development or expansion. Additionally, a 0.3-acre retention pond serves as a valuable water resource for irrigation purposes.

This property offers a strategic location within a 10-minute radius of multiple cooling and distribution facilities, the farm ensures efficient transportation and access to market channels, maximizing the potential for successful produce distribution. Whether you envision continuing the legacy of this turnkey strawberry farm or exploring new agricultural ventures, this property offers a prime location, essential infrastructure, and a rich agricultural setting.

# Specifications & Features

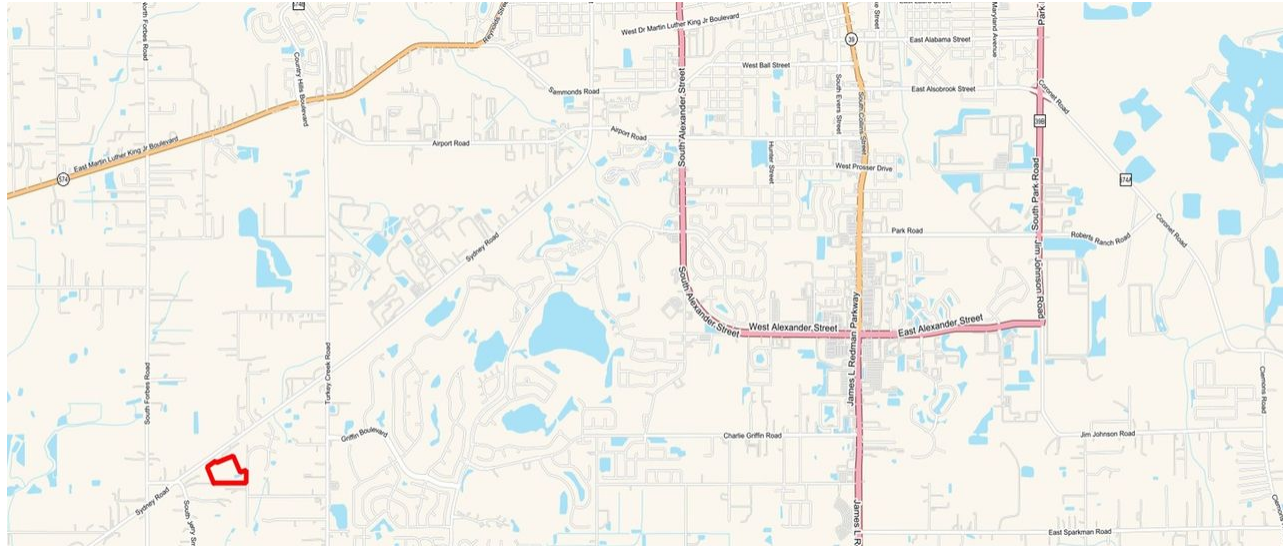


## SPECIFICATIONS & FEATURES

Land Types:	Strawberry
Uplands / Wetlands:	13.7 ± Upland Acres / 0.3 ± Wetland Acres
Soil Types:	Myakka Fine Sand 3.36 acres Ona Fine Sand 2.01 acres St Johns Fine Sand 2.14 acres Seffner Fine Sand 5.97 acres
Zoning / FLU:	AS-1 / R-1
Lake Frontage / Water Features:	0.3 Acre Retention Pond
Water Source & Utilities:	8" Well with overhead irrigation installed - Electricity is on site
Road Frontage:	348 FT
Current Use:	Strawberry Production

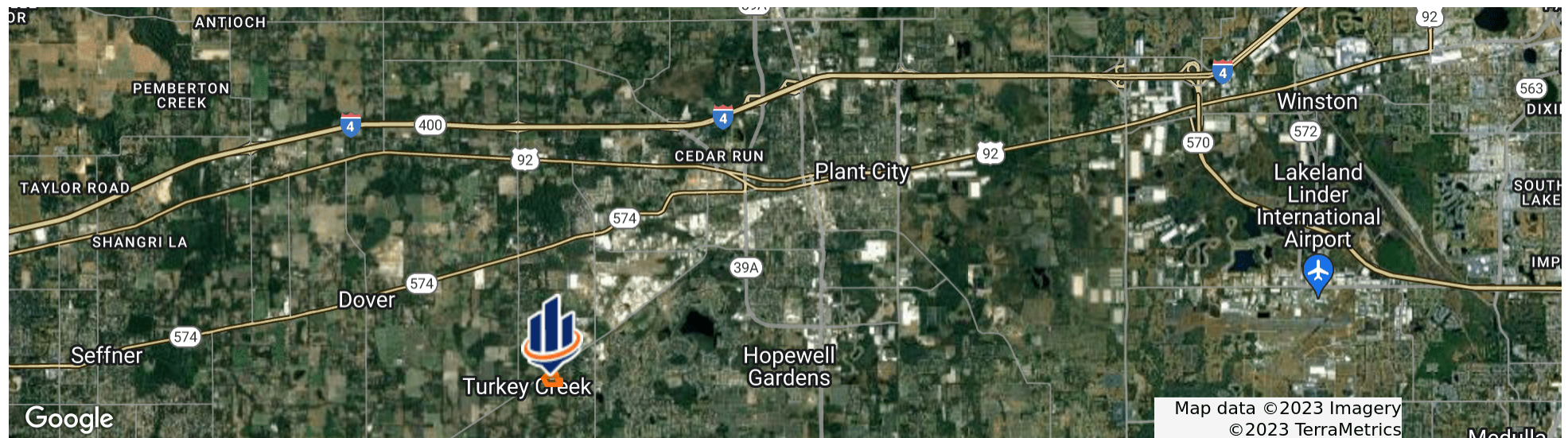


# Location



## LOCATION & DRIVING DIRECTIONS

Parcel:	U-11-29-21-ZZZ-000003-99380.0
GPS:	27.9787482, -82.1795461
Driving Directions:	From Hwy 92, head south on Turkey Creek Rd; Turn west onto Charleston Ave; Turn north onto Pandora Pl; The farm will be on your left
Showing Instructions:	Contact the Listing Agent for Access





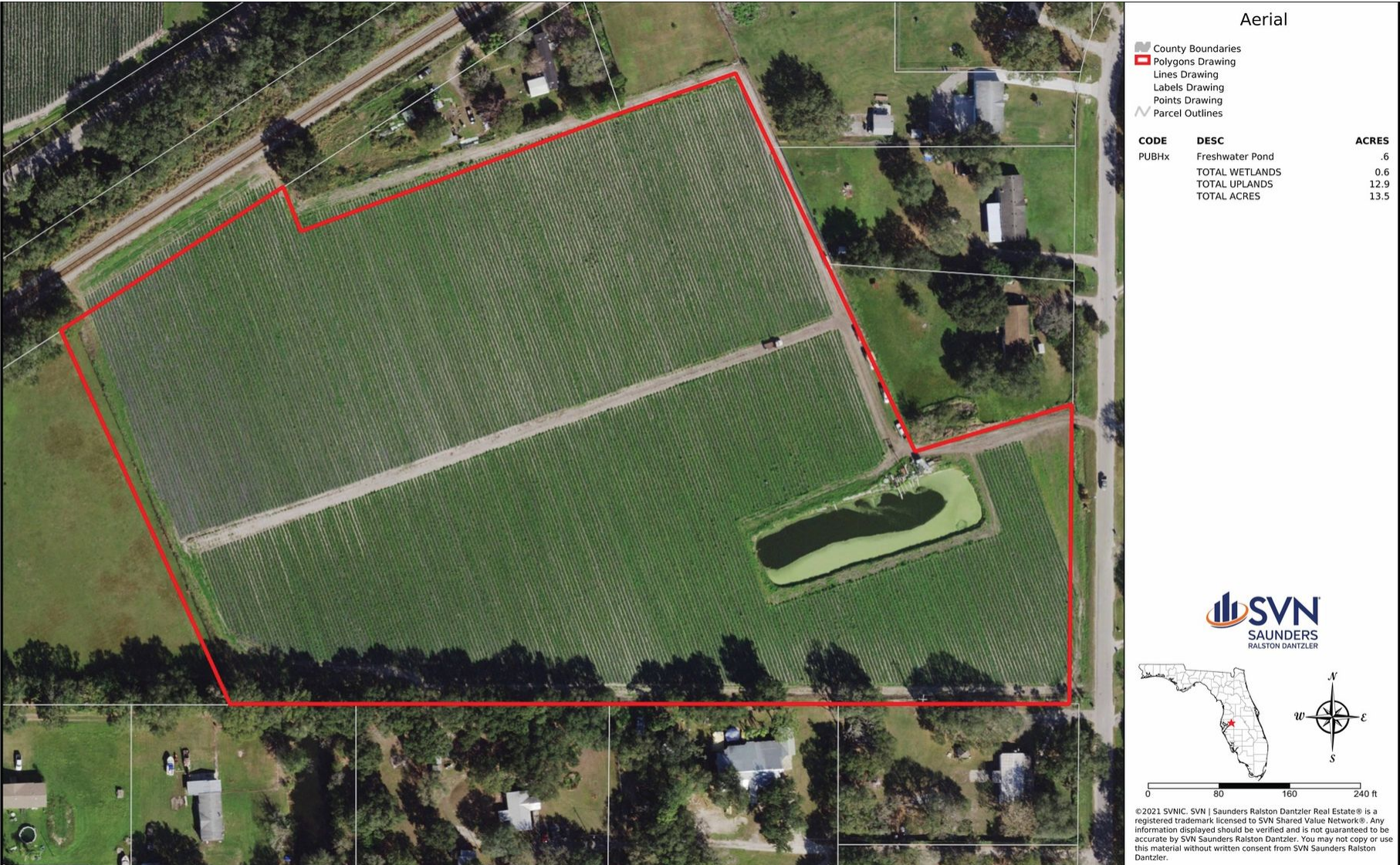








# Aerial Map





# Soils Map





# Wetlands Map







## HILLSBOROUGH COUNTY

### FLORIDA

Founded	1834	Density	1,206.26
County Seat	Tampa	Population	1,267,775 [2012]
Area	1,051 sq. mi.	Website	<a href="http://hillsboroughcounty.org">hillsboroughcounty.org</a>

Hillsborough County is a county located in the west-central portion of the U.S. state of Florida. In the 2010 census, the population was 1,229,226, making it the fourth-most populous county in Florida and the most populous county outside the Miami metropolitan area. A 2019 estimate has the population of Hillsborough County at 1,471,968 people, which itself is greater than the populations of 12 states according to their 2019 population estimates. Its county seat and largest city is Tampa. Hillsborough County is part of the Tampa–St. Petersburg–Clearwater Metropolitan Statistical Area.



# Advisor Biography



**JERROD PARKER**

Associate Advisor

jerrod.parker@svn.com

Direct: **877.518.5263 x392** | Cell: **813.967.2862**

## PROFESSIONAL BACKGROUND

Jerrod Parker is an Associate Advisor at SVN | Saunders Ralston Dantzler Real Estate, operating out of the Lakeland headquarters while focusing on the Central Florida region.

Jerrod is also a 7th generation Floridian. He and his family are well known in the Pasco, Hillsborough, Polk, and Hardee Counties. Jerrod's father is the Director of The Florida Strawberry Growers Association and his grandfather was on the Hillsborough County School Board for over twenty years. Additionally, members of his immediate family are active board members for the Florida Strawberry Festival.

After receiving his bachelor's degree from Florida Southern College, Jerrod started his career in Hillsborough County's public school education system. He later entered the agricultural industry where he provided client services as a Certified Crop Advisor to an array of different farmers and ranchers across Central Florida.

Now, living in Polk County, Jerrod mainly focuses on public infrastructure development for schools, fire stations, and police stations. He is an active participant in the Polk County community as a member of the Northeast Polk Chamber of Commerce, Haines City Rotary Club, and the Central Florida Development Council.

Jerrod specializes in:

- Public Infrastructure
- Commercial Development Properties
- Farmland
- Investment Properties
- Central Florida





For more information visit [www.SVNsaunders.com](http://www.SVNsaunders.com)

#### HEADQUARTERS

1723 Bartow Rd  
Lakeland, FL 33801  
863.648.1528

#### ORLANDO

605 E Robinson Street, Suite 410  
Orlando, Florida 32801  
386.438.5896

#### NORTH FLORIDA

356 NW Lake City Avenue  
Lake City, Florida 32055  
386.438.5896

#### GEORGIA

218 W Jackson Street, Suite 203  
Thomasville, Georgia 31792  
229.299.8600

©2023 SVN | Saunders Ralston Dantzler Real Estate. All SVN® Offices Independently Owned and Operated SVN | Saunders Ralston Dantzler Real Estate is a full-service land and commercial real estate brokerage with over \$3 billion in transactions representing buyers, sellers, investors, institutions, and landowners since 1996. We are recognized nationally as an authority on all types of land, including agriculture, ranch, recreation, residential development, and international properties. Our commercial real estate services include marketing, property management, leasing and tenant representation, valuation, business brokerage, and advisory and counseling services for office, retail, industrial, and multi-family properties. Our firm also features an auction company, forestry division, international partnerships, hunting lease management, and extensive expertise in conservation easements. Located at the center of Florida's I-4 corridor, we provide proven leadership and collaborative expertise backed by the strength of the SVN® global platform. To learn more, visit [SVNsaunders.com](http://SVNsaunders.com).

