



GRANITE BASIN RANCH

15811 W SH 29, Llano, TX

54 Acres | \$996,000



Copyright 2023 Grand Land Realty, LLC
The material contained in this document is based in part upon information furnished to Grand Land Realty, LLC. by sources deemed to be reliable. The information is believed to be accurate in all material respects, but no representation or warranty, expressed, or implied, as to list accuracy or completeness is made by any party. Recipients should conduct their own investigation and analysis of the information described herein.



Dustin Preston

Realtor®- Land Specialist

dpreston@grandland.com

(281) 787-5401

PROPERTY DESCRIPTION

The Granite Basin Ranch is an attractive 54-acre property located just outside Llano, TX. On the ranch, you'll find numerous wildlife species, including whitetail deer, wild hogs, migratory waterfowl, and multiple varmint species. There is an excellent mixture of pastureland and brush to provide the perfect habitat for your wildlife and cattle needs. You'll also find two medium-sized tanks that have been more than sufficient in holding/supplying water. The Granite Basin Ranch has two manufactured homes on-site and a large shop with living quarters and multiple storage rooms. This tract is close to several Metropolitan cities, making it a great recreational weekend getaway. It would also serve as a fantastic investment as it has over 2300' of HWY 29 frontage and remains in a path of growth.

The Granite Basin Ranch offers 54 acres of wildlife-exempt land with over 2300' of HWY 29 frontage. Two wet weather creeks feed the two medium-sized tanks on the property. Both tanks hold water and have been the primary water source for wildlife and livestock. Throughout the property, you'll find numerous Live Oaks, Mesquite, KR Bluestem, and other native trees and grasses in this area. With more than 30' of elevation change, you have views for miles.

Two- 3 bedroom 2 bath manufactured homes are on site and are in great condition. Behind the homes, you'll find a nice set of working pens, a large shop with additional remodeled living quarters, and multiple storage rooms. There are multiple septic systems and one water well approximately 340' deep.

Copyright 2023 Grand Land Realty, LLC
The material contained in this document is based in part upon information furnished to Grand Land Realty, LLC. by sources deemed to be reliable. The information is believed to be accurate in all material respects, but no representation or warranty, expressed, or implied, as to list accuracy or completeness is made by any party. Recipients should conduct their own investigation and analysis of the information described herein.



Dustin Preston
Realtor®- Land Specialist
dpreston@grandland.com
(281) 787-5401



SCAN HERE TO SEE MORE OF
GRANITE BASIN RANCH

LOCATION

Llano County

18 miles to Llano Municipal Airport, 38 miles to Fredericksburg, 64 miles to Georgetown, 95 miles to Austin-Bergstrom International Airport.

DIRECTIONS

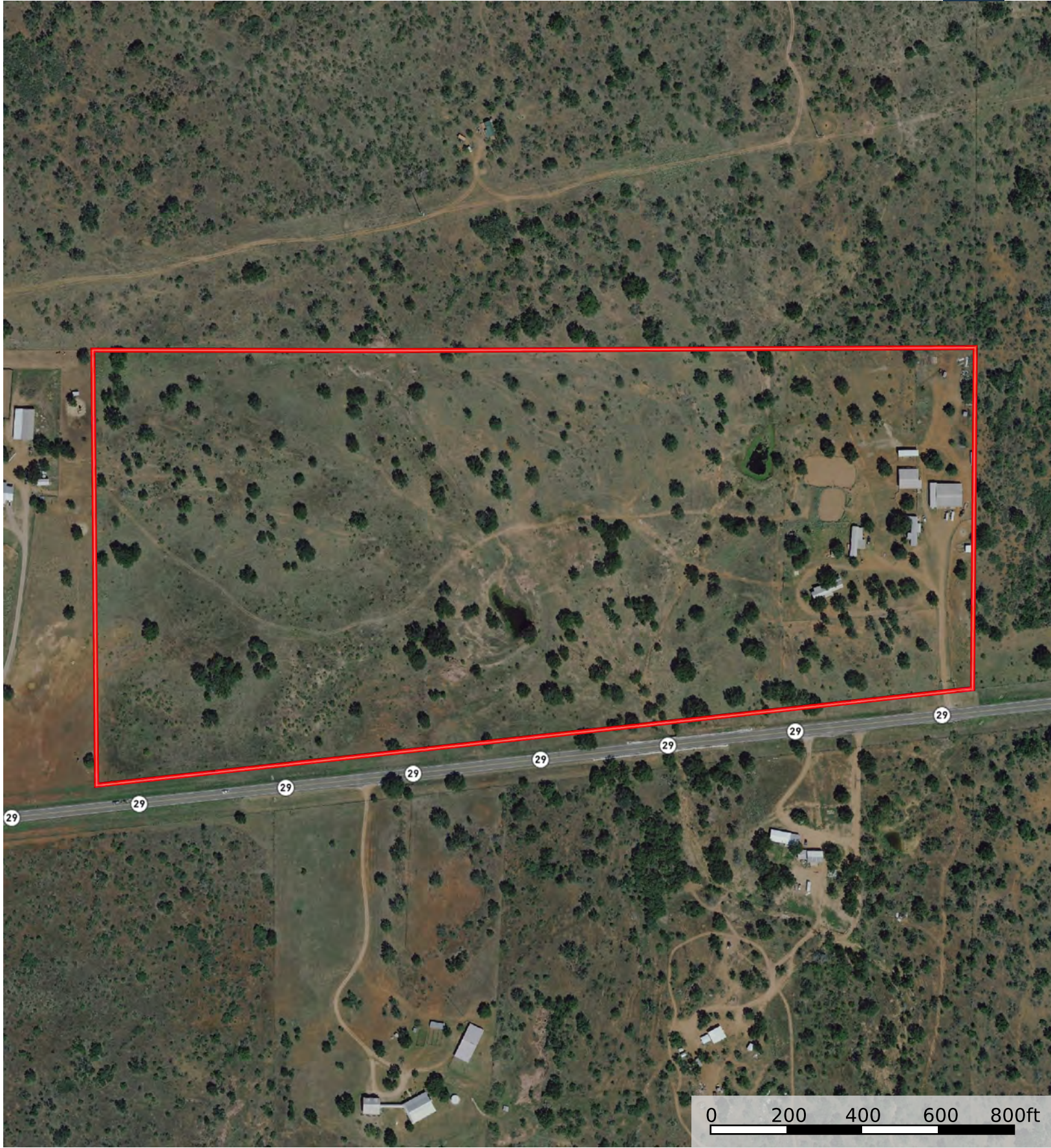
From Llano take HWY 29 west for 15.4 miles. Property will be on your right.

Copyright 2023 Grand Land Realty, LLC
The material contained in this document is based in part upon information furnished to Grand Land Realty, LLC. by sources deemed to be reliable. The information is believed to be accurate in all material respects, but no representation or warranty, expressed, or implied, as to list accuracy or completeness is made by any party. Recipients should conduct their own investigation and analysis of the information described herein.

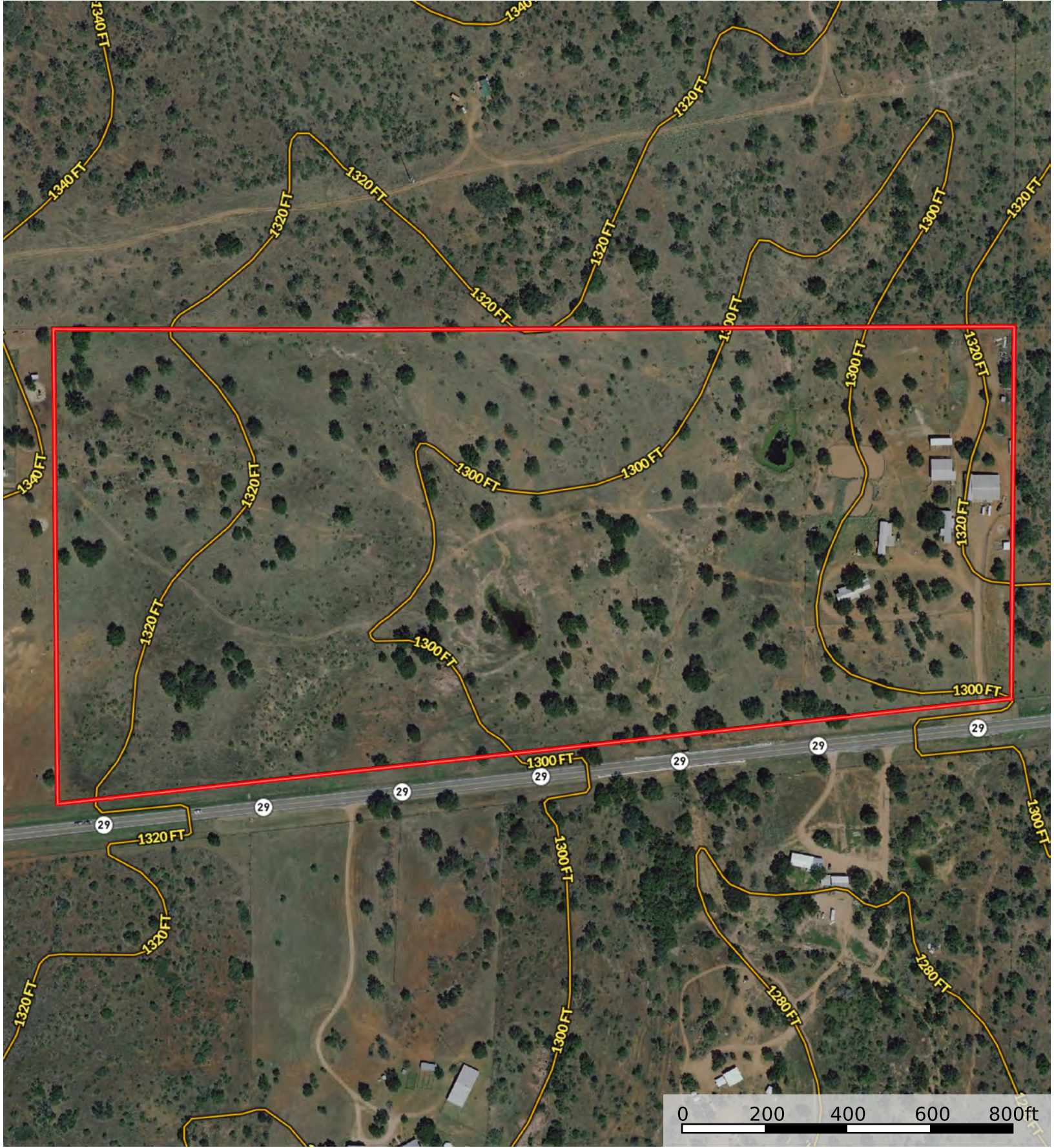



Dustin Preston
Realtor®- Land Specialist
dpreston@grandland.com
(281) 787-5401

15811 W SH 29 Llano,
Llano County, Texas, 53 AC +/-

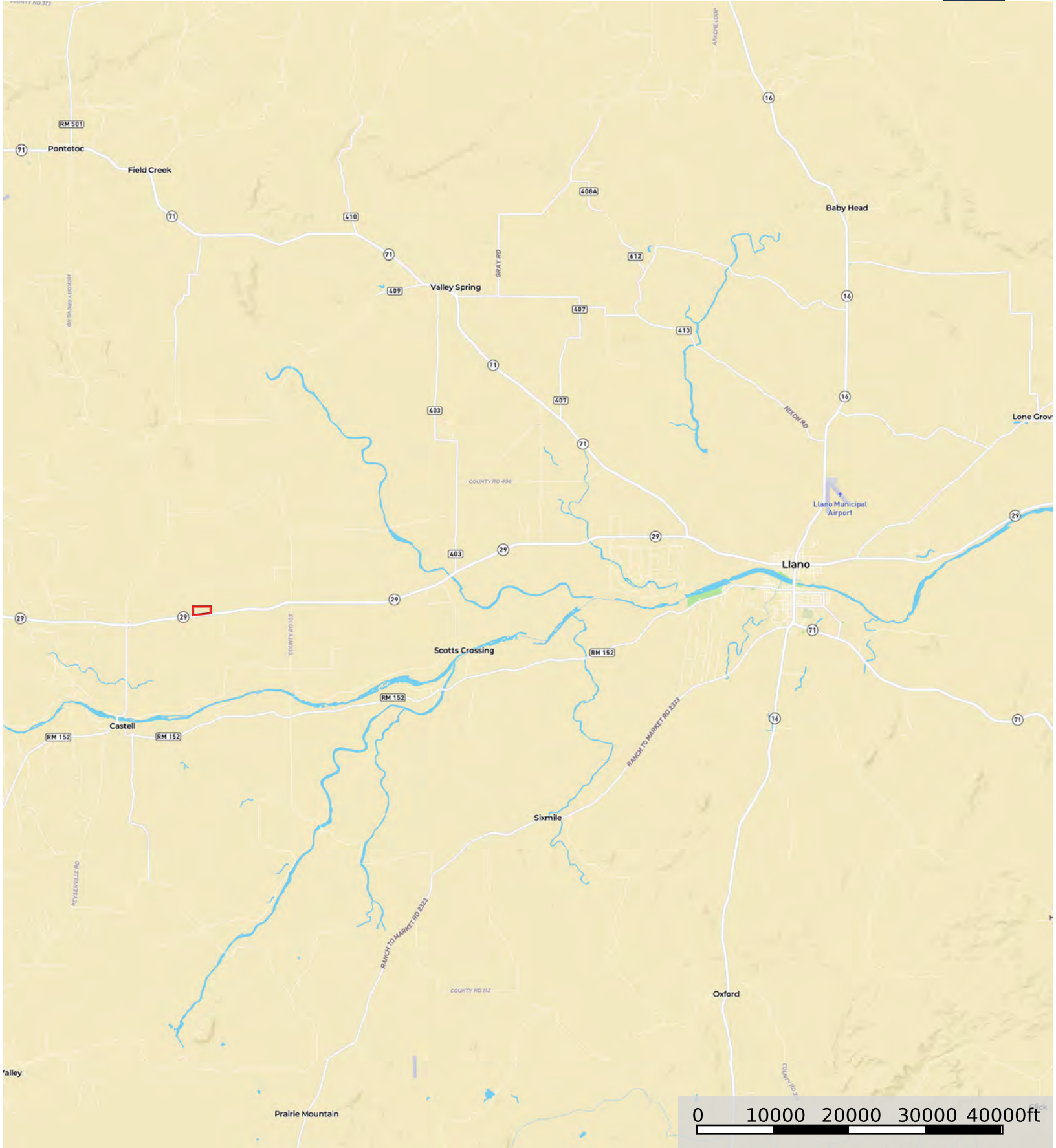


 Boundary

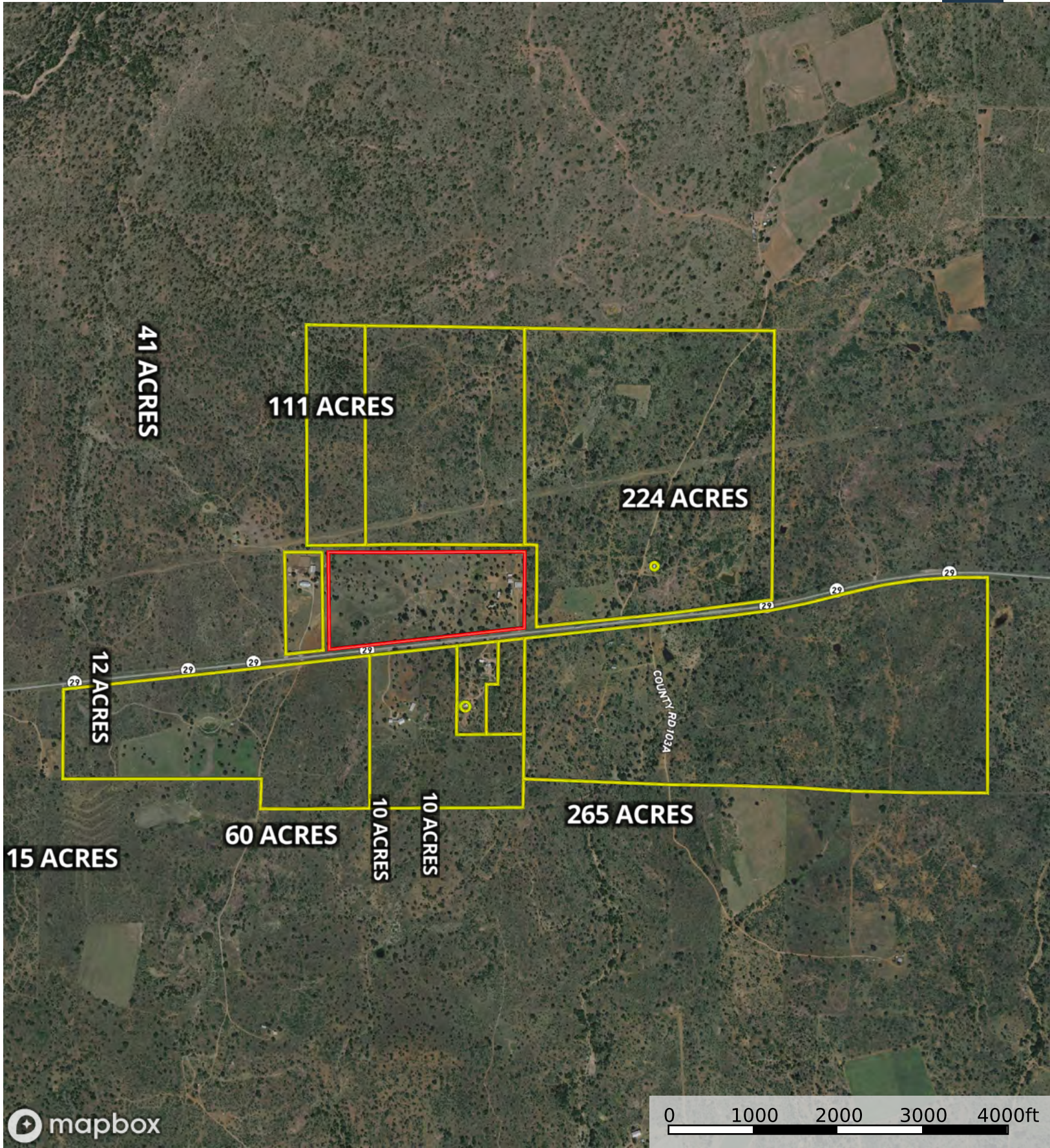


 Boundary

15811 W SH 29 Llano,
Llano County, Texas, 53 AC +/-



 Boundary



Boundary 1

Boundary