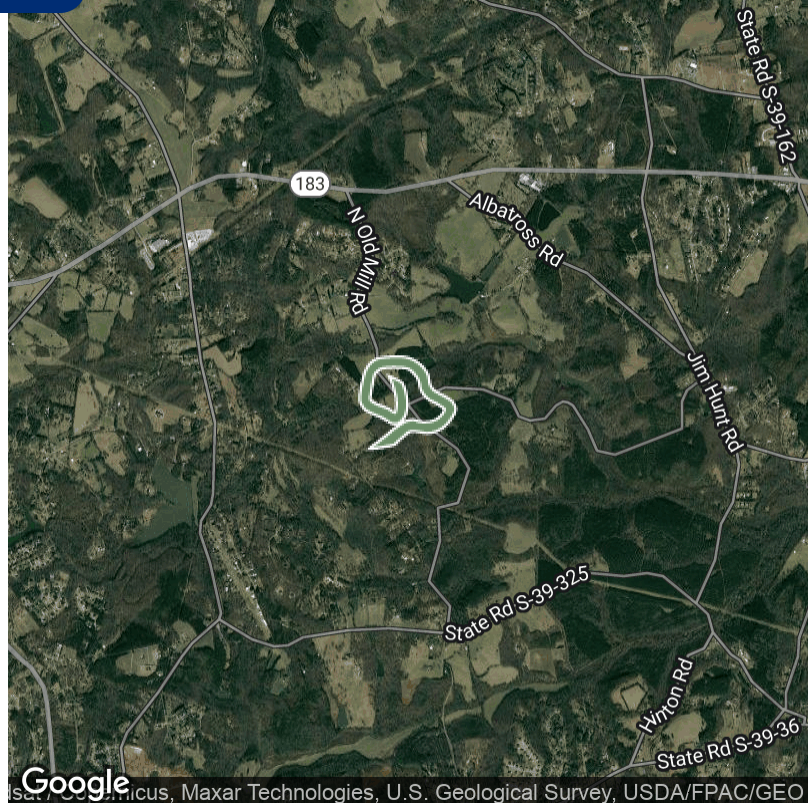


CARPENTER FARMS LOT 13

±12.3 Acres | Pickens County



FRANKLIN FINLEY ROAD LOT 13 EASLEY SC • FOR SALE



PROPERTY HIGHLIGHTS

- A portion of Pickens County Tax Map # 5130-00-68-8704
- Road Frontage on Franklin Finley Road and Jim Hunt Road
- Zoned for Award Winning Schools in Pickens County: Crosswell Elementary School | Gettys Middle School | Easley High School
- Private Residential Lots
- Heavily Wooded in Hardwoods & Pines featuring Creek access on Various Lots | Rolling Topography
- Utility Possibilities Power, Water, Cable, Internet, Septic
- *Acreage and Utility to be verified by Buyer or Buyer's Agent
- *Subject to Recorded Covenants & Restrictions

OFFERING SUMMARY

Sale Price:	\$225,000
Lot Size:	±12.3 Acres

PROPERTY DESCRIPTION

Are you wanting to be away from the hustle and bustle of the city but still close enough to the excitement of downtown? With Carpenter Farms, you can ditch the sound of cars for the sound of cicadas! At Carpenter Farms, you can build the house of your dreams within the Dacusville Community while maintaining the privacy you desire! Dacusville is a unique Community with a great central location to the lake, state parks, great restaurants, and shopping. You can leave your house and head to downtown Easley for an awesome lunch at the Silos within +/-10 minutes. After that you can head to downtown Greenville, in +/-20 minutes, for all the shopping you can ever need. Once you shop till you drop, you can go to Travelers Rest and have dinner at Sidewall Pizza. Then to top it all off you can be back at your house within +/-25 minutes, just in time to hear the crickets chirp.

LOCATION DESCRIPTION

±10 Minutes from Dacusville
±12 Minutes to Easley
±20 Minutes from Greenville
±55 Minutes from Spartanburg

TRIPP TAYLOR

Senior Associate
336.260.5523
ttaylor@reedypg.com

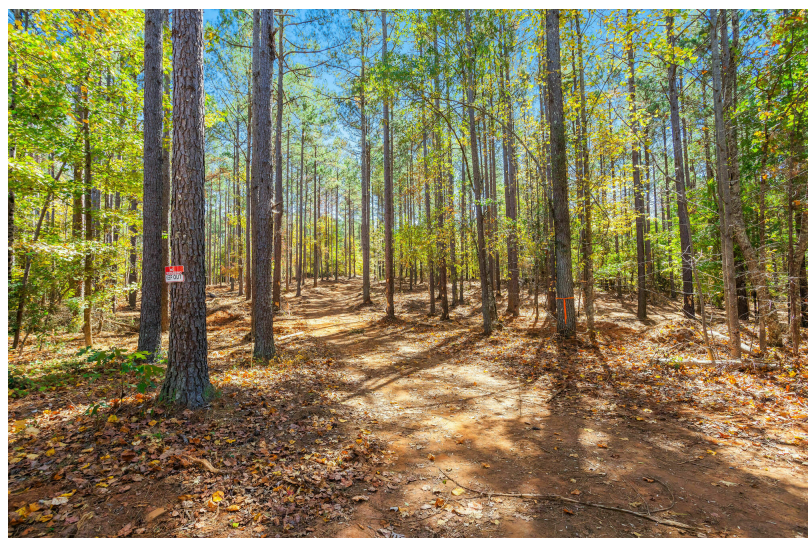
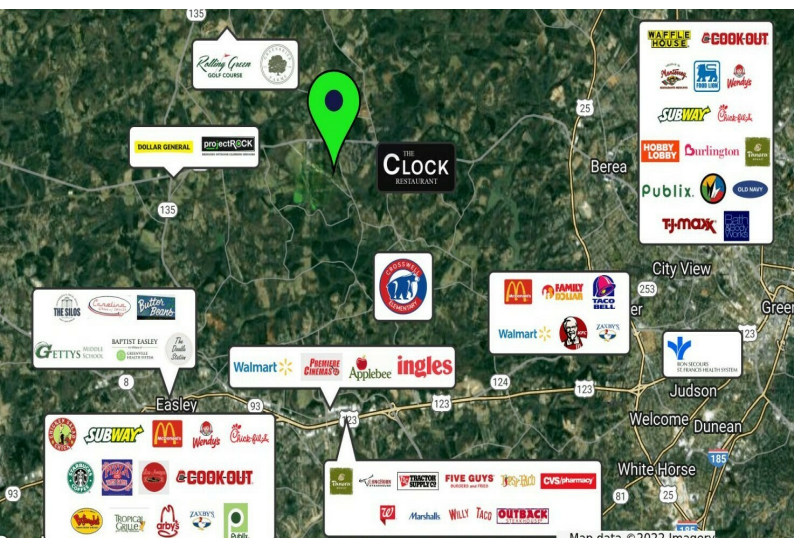
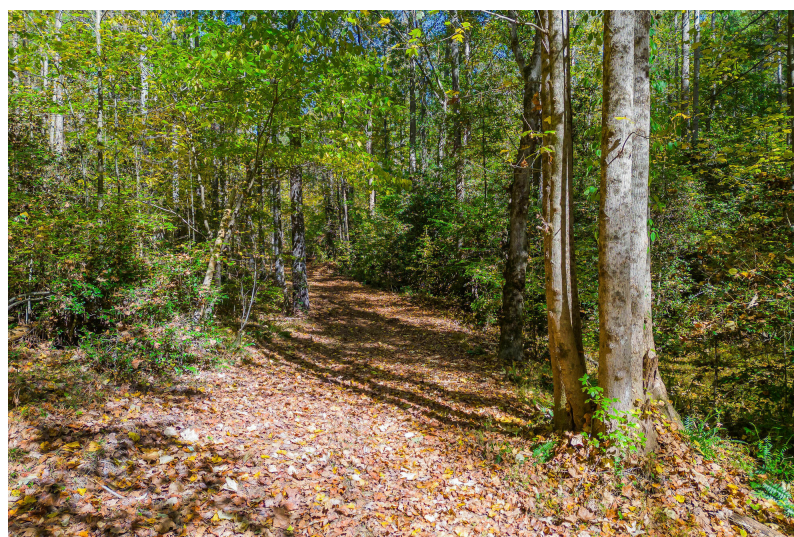
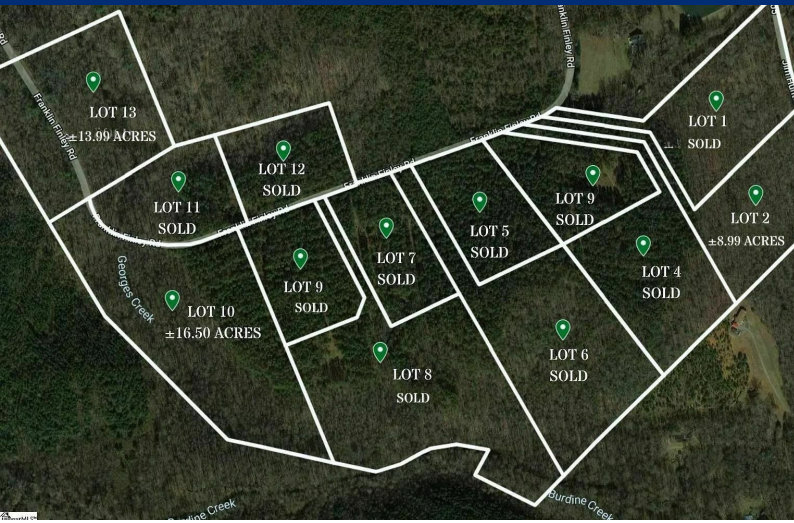
REEDY LAND CO.
P.O. Box 17009
Greenville, SC 29606
864.610.5869
reedylanco.com

CARPENTER FARMS LOT 13

±12.3 Acres | Pickens County



FRANKLIN FINLEY ROAD LOT 13 EASLEY SC • FOR SALE



TRIPP TAYLOR

Senior Associate

336.260.5523

ttaylor@reedypg.com

REEDY LAND CO.

P.O. Box 17009

Greenville, SC 29606

864.610.5869

reedylanco.com