



SMALLTOWN

HUNTING PROPERTIES & REAL ESTATESM

Office 769-888-2522



Home on 4± Acres in Holmes County, MS

\$225,000

Property Profile

Home on 4± Acres in Holmes County, MS

Location:

- 221 Spring Street, Lexington, MS 39095
- Holmes County, MS
- Approximately 40 Minutes NW of Canton

Coordinates:

- 33,1125, -90.0573

Property Information:

- 4± Acres Framed by Old Oak Trees
- 1,500± SqFt Renovated Home
- 3 Bedrooms/2 Full Baths
- Energy Star Appliances Including Energy Efficient Windows
- 1 Space Carport
- New Roof

Property Use:

- Home
- Investment
- Rental Possibilities

Tax Information: 2022- \$2,136.66

- Parcel #1; 050-08-12200 - \$1,832.54
- Parcel #2; 050-08-12300 - \$304.12



SMALLTOWN
HUNTING PROPERTIES
& REAL ESTATESM

BARRY HOLT

LAND SPECIALIST

C: 601-613-2288

O: 769-888-2522

barry@smalltownproperties.com

4848 Main St. - Flora, MS 39071

smalltownproperties.com

Information is believed to be accurate but not guaranteed.

Welcome home to 221 Spring Street in Lexington, MS! Situated on 4± acres in Holmes County, this 1,500± square foot home has been completely renovated and features three bedrooms and two full baths. Energy efficient windows, a new roof, Energy Star appliances, natural wood and premium vinyl flooring are just a few of the other wonderful attributes of this beautiful home. The yard is spacious, and the property is framed by old oak trees. Enjoy the peaceful setting while being conveniently nestled in the heart of Lexington. This property would be excellent for a first-time home buyer or used as an investment. Contact Barry Holt to schedule a private tour today!



SMALLTOWN
HUNTING PROPERTIES
& REAL ESTATESM

BARRY HOLT
LAND SPECIALIST

C: 601-613-2288

O: 769-888-2522

barry@smalltownproperties.com

4848 Main St. - Flora, MS 39071

smalltownproperties.com

Information is believed to be accurate but not guaranteed.



SMALLTOWN
HUNTING PROPERTIES
& REAL ESTATESM

BARRY HOLT
LAND SPECIALIST

C: 601-613-2288

O: 769-888-2522

barry@smalltownproperties.com

4848 Main St. - Flora, MS 39071

smalltownproperties.com

Information is believed to be accurate but not guaranteed.



SMALLTOWN
HUNTING PROPERTIES
& REAL ESTATESM

BARRY HOLT

LAND SPECIALIST

C: 601-613-2288

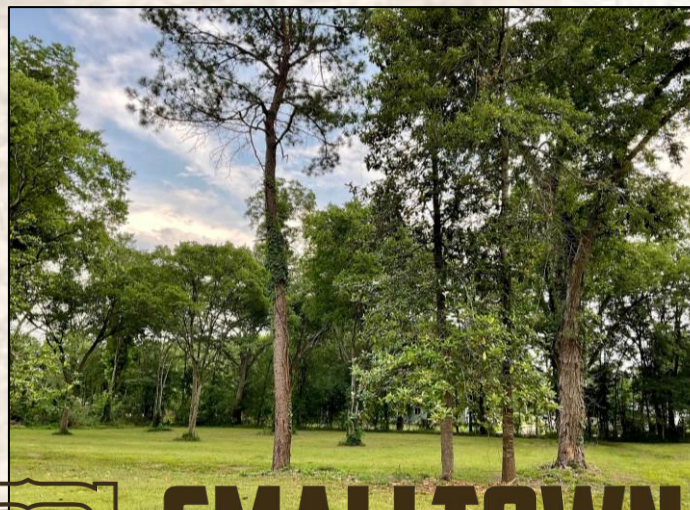
O: 769-888-2522

barry@smalltownproperties.com

4848 Main St. - Flora, MS 39071

smalltownproperties.com

Information is believed to be accurate but not guaranteed.



SMALLTOWN
HUNTING PROPERTIES
& REAL ESTATESM

BARRY HOLT
LAND SPECIALIST

C: 601-613-2288

O: 769-888-2522

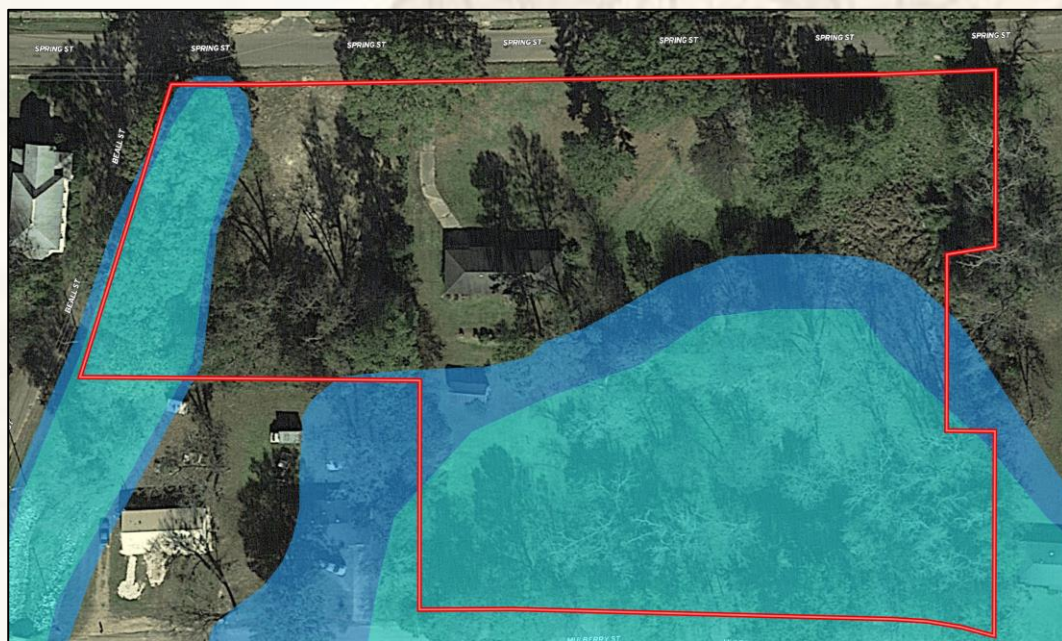
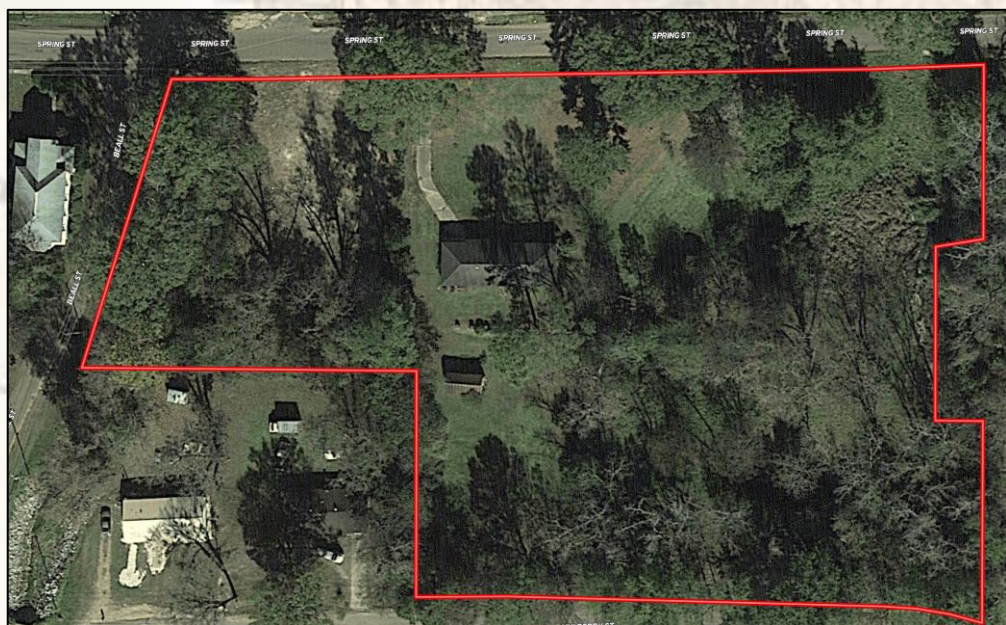
barry@smalltownproperties.com

4848 Main St. - Flora, MS 39071

smalltownproperties.com

Information is believed to be accurate but not guaranteed.

MapRight
Link



Flood Map



SMALLTOWN
HUNTING PROPERTIES
& REAL ESTATESM

BARRY HOLT

LAND SPECIALIST

C: 601-613-2288

O: 769-888-2522

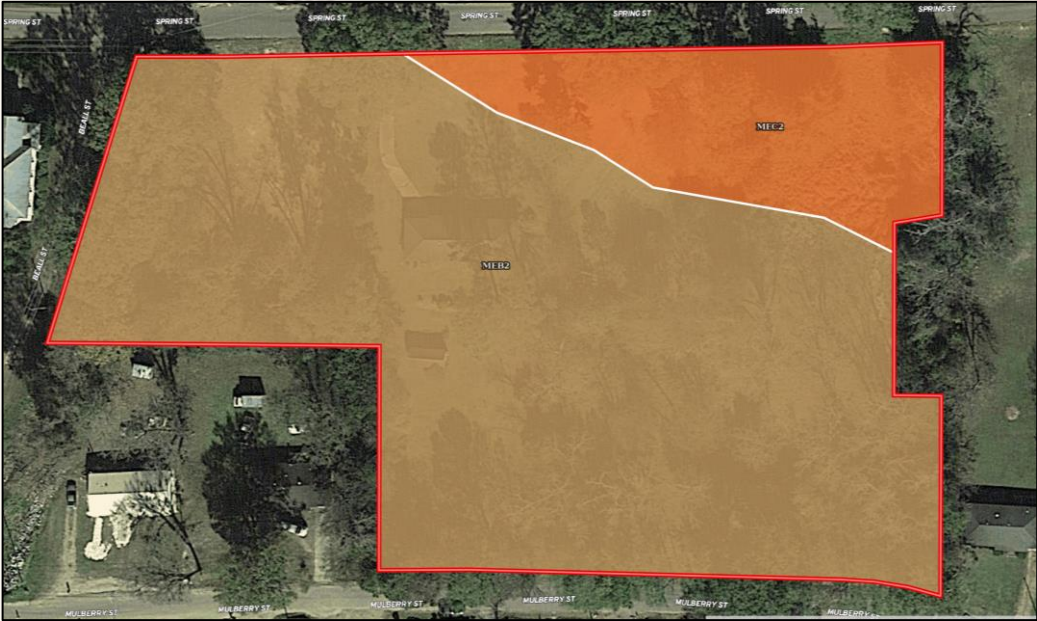
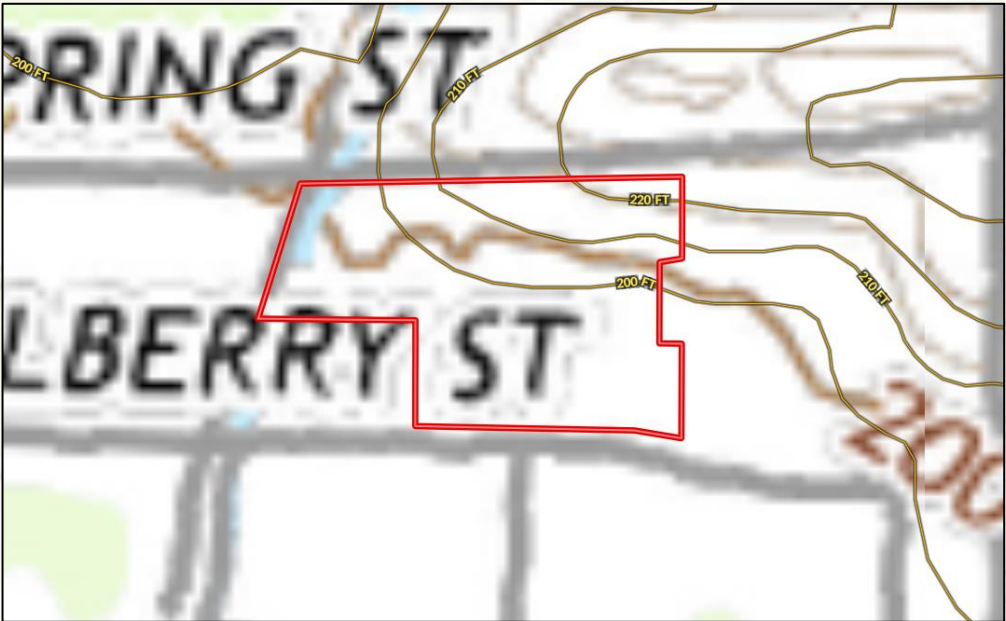
barry@smalltownproperties.com

4848 Main St. - Flora, MS 39071

smalltownproperties.com

Information is believed to be accurate but not guaranteed.

Topo Map



Soil Map

SOIL CODE	SOIL DESCRIPTION	ACRES	%	CPI	NCCPI	CAP
MeB2	Memphis silt loam, 2 to 5 percent slopes, eroded, south	3.15	82.46	0	83	2e
MeC2	Memphis silt loam, 5 to 8 percent slopes, eroded	0.68	17.8	0	82	3e
TOTALS		3.83(*)	100%	-	83.04	2.18



SMALLTOWN
HUNTING PROPERTIES
& REAL ESTATESM

BARRY HOLT

LAND SPECIALIST

C: 601-613-2288

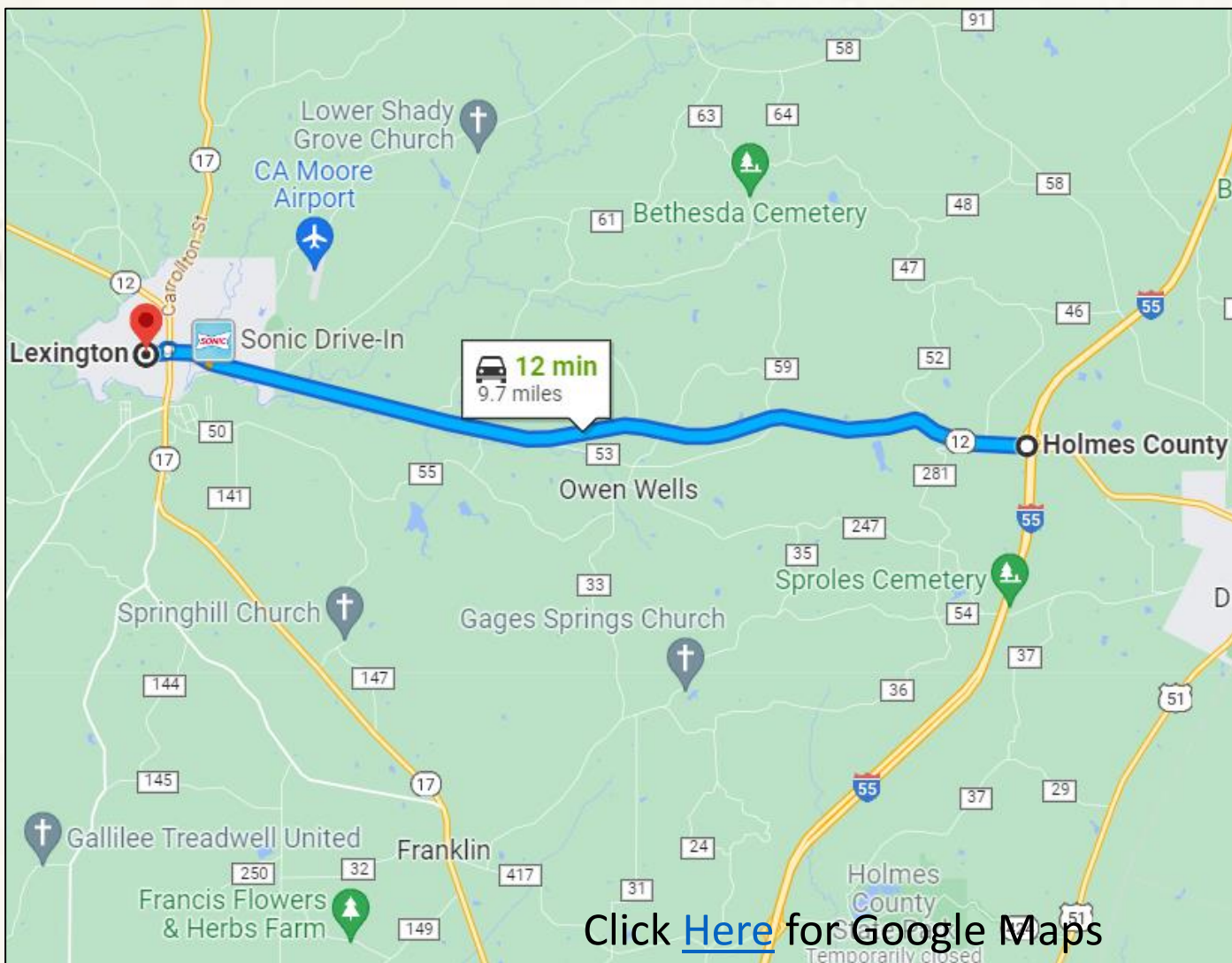
O: 769-888-2522

barry@smalltownproperties.com

4848 Main St. - Flora, MS 39071

smalltownproperties.com

Information is believed to be accurate but not guaranteed.



Click [Here](#) for Google Maps

Directional Map



SMALLTOWN
HUNTING PROPERTIES
& REAL ESTATESM

BARRY HOLT

LAND SPECIALIST

C: 601-613-2288

O: 769-888-2522

barry@smalltownproperties.com

4848 Main St. - Flora, MS 39071

smalltownproperties.com

Information is believed to be accurate but not guaranteed.