

# Prime Land For Sale

0 Browns Dairy Rd,  
Ridgeway, VA (Henry County)

## Managed Timber & Hunting Tract



Henry County

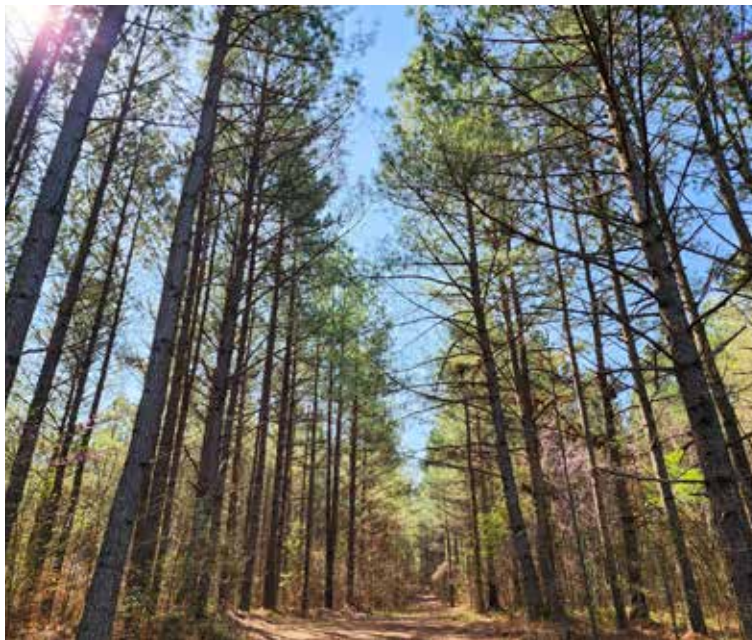
# 273 WOODED ACRES

## Premier Timber and Hunting Tract on the Virginia / North Carolina Line

### Beautiful, productive timber tract and private hunting preserve!

- 273.8 acres near the Virginia / Carolina line
- Convenient access to US-220 and Commonwealth Crossing Business Center, a strategic Virginia business site
- Majority in managed, well growing Loblolly pine planted in 1999 (timber cruise available)
- Managed hunting preserve for over 15 years with camp area, food plots, shooting lanes, trails, and stand locations (buildings, feeders, stands, etc not included in sale)
- Private and secure with some great views!
- Located within the Marrowbone Reservoir high water line plus frontage on Patterson Branch and several interior streams
- Excellent interior road through property plus a network of 4-wheeler trails
- Zoned A1
- Tax parcel 71.4(000)000/012
- 38mi from Danville  
36mi from Greensboro, NC  
40mi from Winston-Salem, NC

Details at [TRFAuctions.com](http://TRFAuctions.com)



### DIRECTIONS TO PROPERTY

**From Danville:** US-58W to Martinsville and take US-58W Bypass 6mi to exit for US-220S toward Greensboro. 7mi to North Carolina border and RIGHT on Martinsville Loop/Horsepasture Price Rd. 2mi to RIGHT on Fall Creek Rd. 1/4mi to RIGHT on Browns Dairy Rd. 0.4mi to end of state maintenance. Continue onto gravel road (20' deeded easement) 0.4mi to locked gate. Property starts 0.4mi past locked gate.

**From Greensboro:** US-220N toward Virginia. Before state line, LEFT on Martinsville Loop/Horsepasture Price Rd. 2mi to RIGHT on Fall Creek. 1/4mi to RIGHT on Browns Dairy. 0.4mi to end of state maintenance. Continue onto gravel road (20' deeded easement) 0.4mi to locked gate. Property starts 0.4mi past gate.

### PREVIEWS

Property is gated and secured. Call agent to set up an appointment.

### AGENT

Mike Torrence 434.660.5159

Micah Torrence 434.610.3182

**PRICE: \$895,000**



[www.TRFAuctions.com](http://www.TRFAuctions.com)

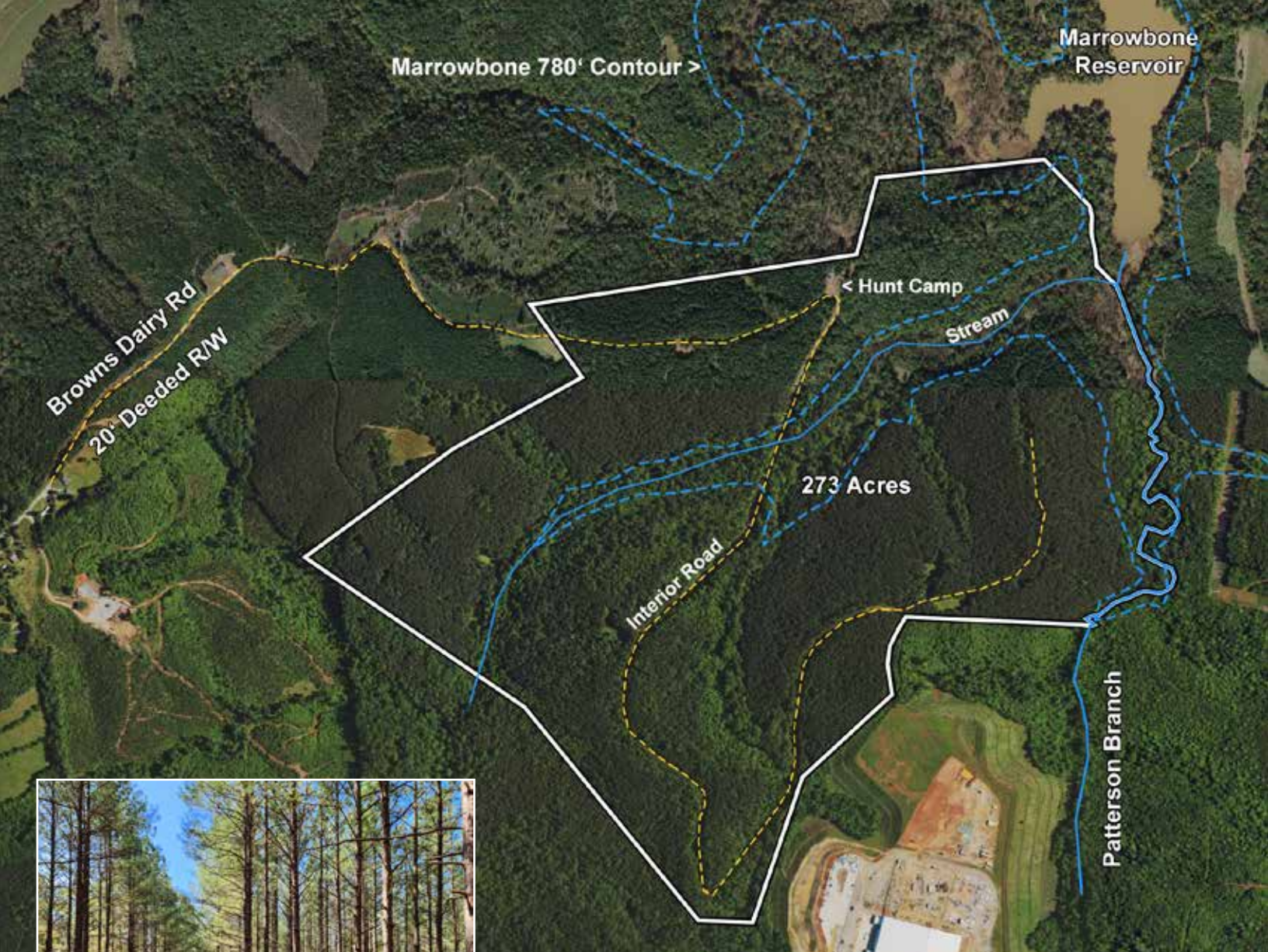


# 434.847.7741

Mike Torrence: 434.660.5159

Micah Torrence: 434.610.3182

Torrence, Read, & Forehand Auctions | 101 Annjo Ct, Forest, VA 24551 | [info@trfauctions.com](mailto:info@trfauctions.com) | VAAF501



Managed Timber Tract



Old Homesite



Creeks & Streams



Hunting Camp Area  
(buildings not included)



COMMONWEALTH  
CROSSING BUSINESS CENTRE



Food Plots



Great Road Network

DETAILS, PHOTOS, & MORE AT

**[www.TRFAuctions.com](http://www.TRFAuctions.com)**