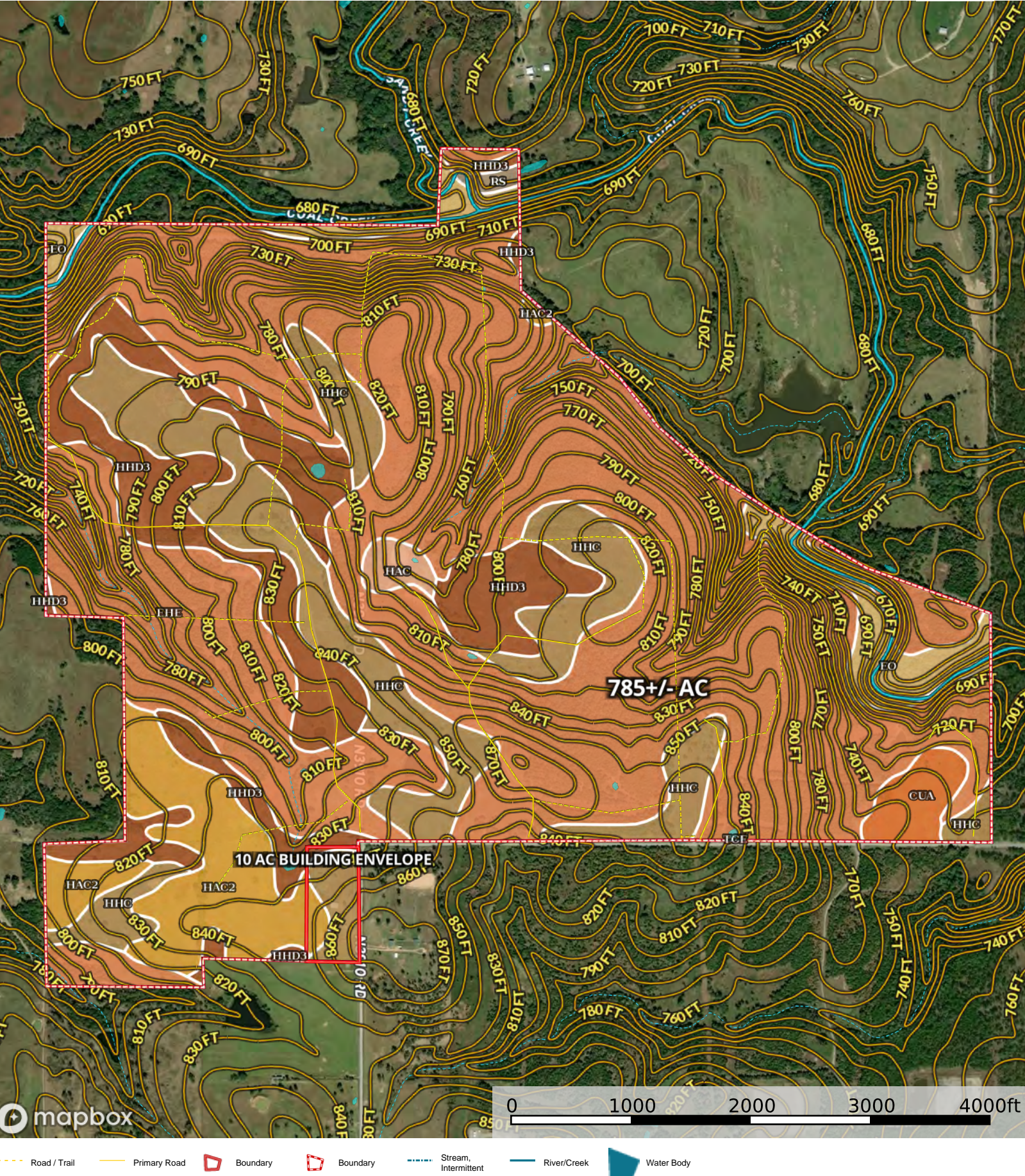


OK Hunting & Ranch Land for Sale Pittsburg  
Pittsburg County, Oklahoma, 785 AC +/-





## Boundary 790.24 ac

SOIL CODE	SOIL DESCRIPTION	ACRES	%	CPI	NCCPI	CAP
EhE	Bengal-Clebit-Clearview complex, 5 to 30 percent slopes	478.38	60.54	0	21	7e
HhC	Clebit-Clearview complex, 3 to 5 percent slopes	113.24	14.33	0	36	4s
HhD3	Clebit-Clearview complex, 3 to 8 percent slopes, severely eroded	99.58	12.6	0	26	6e
HaC2	Clearview fine sandy loam, 3 to 5 percent slopes, eroded	50.63	6.41	0	51	4e
Eo	Rexor and Verdigris soils, 0 to 1 percent slopes, frequently flooded	31.08	3.93	0	64	5w
CuA	Counts loam, 0 to 1 percent slopes	10.46	1.32	0	51	3s
HaC	Clearview fine sandy loam, 3 to 5 percent slopes	4.96	0.63	0	56	3e
Rs	Cupco silt loam, 0 to 1 percent slopes, occasionally flooded	1.84	0.23	0	76	2w
TcE	Talihina-Eram-Collinsville complex, 5 to 20 percent slopes	0.07	0.01	0	26	6e
TOTALS		790.24(*)	100%	-	28.14	6.08

(\*) Total acres may differ in the second decimal compared to the sum of each acreage soil. This is due to a round error because we only show the acres of each soil with two decimal.

### Capability Legend

Increased Limitations and Hazards

Decreased Adaptability and Freedom of Choice Users

Land, Capability

	1	2	3	4	5	6	7	8
'Wild Life'	•	•	•	•	•	•	•	•
Forestry	•	•	•	•	•	•	•	
Limited	•	•	•	•	•	•	•	
Moderate	•	•	•	•	•	•		
Intense	•	•	•	•	•			
Limited	•	•	•	•				
Moderate	•	•	•					
Intense	•	•						
Very Intense	•							

### Grazing Cultivation

(c) climatic limitations (e) susceptibility to erosion

(s) soil limitations within the rooting zone (w) excess of water