



SMALLTOWN

HUNTING PROPERTIES
& REAL ESTATESM

769.888.2522 Office

**One Equity Share Bobo Brake, LLC
Coahoma and Bolivar Counties, MS**

\$410,000

Property Profile

1 Equity Share at Bobo Brake, LLC

Location:

- Mississippi Delta
- Coahoma and Bolivar Counties, MS
- 5± Miles Southwest of Clarksdale

Coordinates:

- 34.1192, -90.6903

Property Information:

- 1,531± Acres of Superior Mississippi Delta Duck Habitat
- 833± Acres in Bobo Brake / 186± Acres in Annis Brake / 512± Acres in Black Bottom
- 100± Additional Acres Leased
- 12 Total Shares Currently Owned by 12 Members (1 Treasury Membership)
- Annual Dues \$13,500 (Mainly for Debt Reduction)
- Club Debt Available Upon Request
- Family Oriented - Wives and Kids Welcomed at all Times
- Excellent Duck Hunting (Harvest Record Available Upon Request)
- Beautiful Cypress Trees with Buck Brush Thickets
- Multiple Blinds in Place
- Unlimited Areas to Stand Amongst the Trees and Hunt
- Some Deer Hunting Opportunities along Edges of Brakes
- Minimal Maintenance & Upkeep
- No Lodging on Property (Multiple Options within 30 Minutes)
- Membership Subject to Approval of Club and Debt Assumption

Property Use:

- Recreational
- Trophy Hunting (Ducks & Deer)
- Investment



SMALLTOWN
HUNTING PROPERTIES
& REAL ESTATESM

MICHAEL OSWALT

PRINCIPAL BROKER

C: 662-719-3967

O: 769-888-2522

michael@smalltownproperties.com

4848 Main St. - Flora, MS 39071

smalltownproperties.com

15,000+ Followers

Information is believed to be accurate but not guaranteed.

Welcome to Bobo Brake Hunting Club in the heart of the Mississippi Delta. Bobo Brake Hunting Club was formed over 40 years ago by a group of like-minded waterfowlers with the same goal in mind, chasing ducks in one of the prettiest brakes in the Mississippi Delta. The club is located in Bolivar and Coahoma Counties just under 8.5 miles east of the Mississippi River. The land ownership is comprised of two large tracts encompassing portions of three brakes (Bobo Brake 833± acres / Annis Brake 186± acres / Black Bottom 512± acres). Most of the make-up is a waterfowler's dream (cypress trees, buck brush thickets, and open water). There are countless areas to hide your boat and stand amongst the cypress to hunt (most members choose this option). However, there are also a few blinds in place if you prefer. The members access the hunting areas by mud boat.



SMALLTOWN
HUNTING PROPERTIES
& REAL ESTATESM

MICHAEL OSWALT
PRINCIPAL BROKER
C: 662-719-3967
O: 769-888-2522
michael@smalltownproperties.com
4848 Main St. - Flora, MS 39071
smalltownproperties.com

15,000+ Followers

Information is believed to be accurate but not guaranteed.

One of the good things about hunting a big brake is the low maintenance & upkeep. The Coontail Moss, Duck Potato, and other aquatic varieties provide a nearly endless supply of duck food year after year with minimal effort from the shareholders. Another high point is the scenery; it's absolutely beautiful. You will quickly appreciate the sunrises through the old cypress timber; not everyone in the duck hunting world gets to experience it.



SMALLTOWN
HUNTING PROPERTIES
& REAL ESTATESM

MICHAEL OSWALT

PRINCIPAL BROKER

C: 662-719-3967

O: 769-888-2522

michael@smalltownproperties.com

4848 Main St. - Flora, MS 39071

smalltownproperties.com

15,000+ Followers

Information is believed to be accurate but not guaranteed.

The Black Bottom portion is home to a pair of Bald Eagles with their huge nest being visible from most of the brake. If you are also a deer hunter, the Mississippi Delta is known to grow some of the biggest bucks around. You will find a few places along the edges of the brakes to catch those big bucks chasing does during the rut. Currently, no lodging is at the hunting club; however, you will find multiple options within 30 minutes.



SMALLTOWN
HUNTING PROPERTIES
& REAL ESTATESM

MICHAEL OSWALT
PRINCIPAL BROKER

C: 662-719-3967

O: 769-888-2522

michael@smalltownproperties.com

4848 Main St. - Flora, MS 39071

smalltownproperties.com

15,000+ Followers

Information is believed to be accurate but not guaranteed.



SMALLTOWN
HUNTING PROPERTIES
& REAL ESTATESM

MICHAEL OSWALT

PRINCIPAL BROKER

C: 662-719-3967

O: 769-888-2522

michael@smalltownproperties.com

4848 Main St. - Flora, MS 39071

smalltownproperties.com

f/15,000+ Followers

Information is believed to be accurate but not guaranteed.



SMALLTOWN
HUNTING PROPERTIES
& REAL ESTATESM

MICHAEL OSWALT

PRINCIPAL BROKER

C: 662-719-3967

O: 769-888-2522

michael@smalltownproperties.com

4848 Main St. - Flora, MS 39071

smalltownproperties.com

f/15,000+ Followers

Information is believed to be accurate but not guaranteed.



SMALLTOWN

HUNTING PROPERTIES
& REAL ESTATESM

MICHAEL OSWALT

PRINCIPAL BROKER

C: 662-719-3967

O: 769-888-2522

michael@smalltownproperties.com

4848 Main St. - Flora, MS 39071

smalltownproperties.com

/15,000+ Followers

Information is believed to be accurate but not guaranteed.



SMALLTOWN
HUNTING PROPERTIES
& REAL ESTATESM

MICHAEL OSWALT
PRINCIPAL BROKER

C: 662-719-3967

O: 769-888-2522

michael@smalltownproperties.com

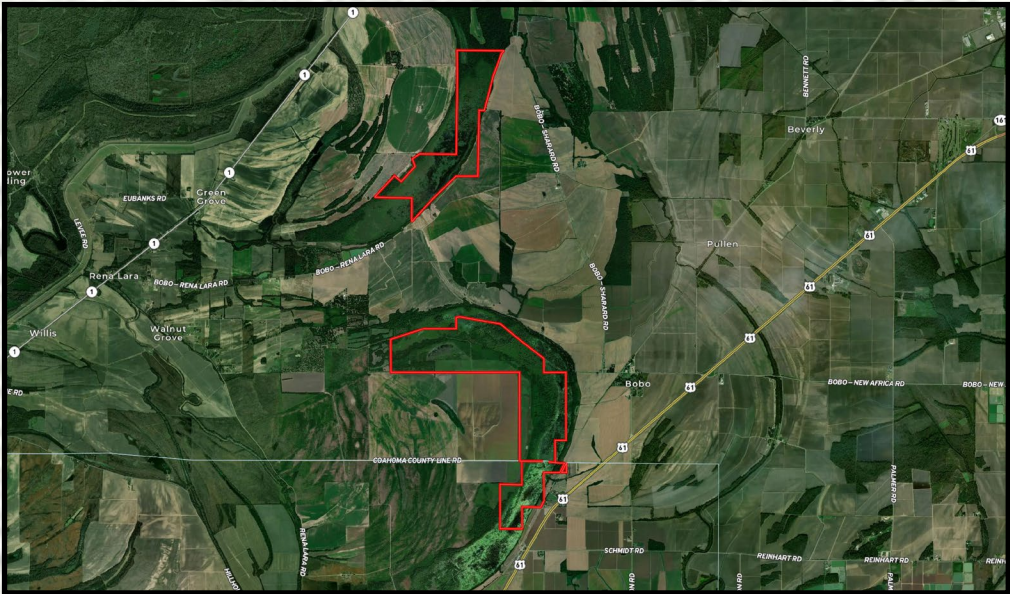
4848 Main St. - Flora, MS 39071

smalltownproperties.com

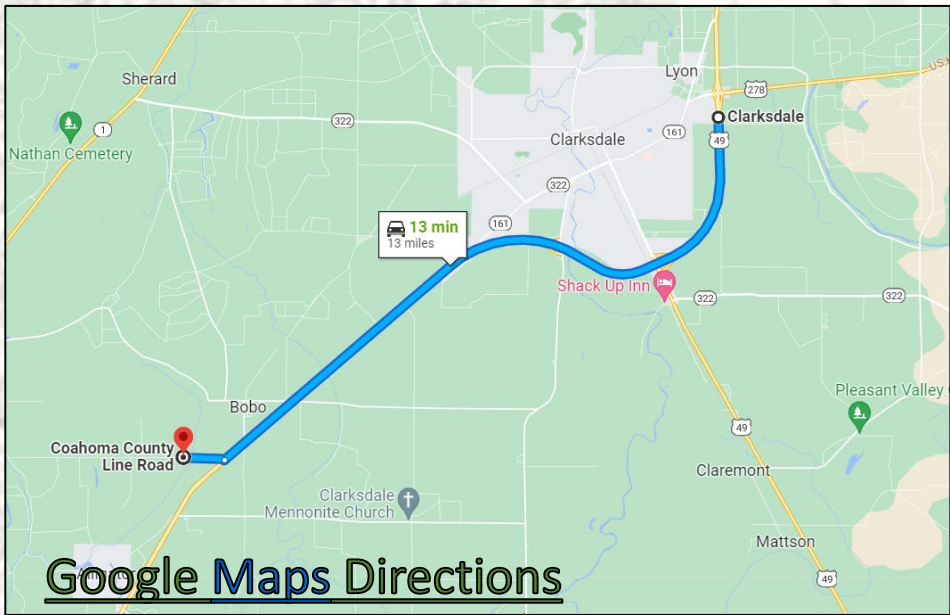
15,000+ Followers

Information is believed to be accurate but not guaranteed.

The club is conveniently located just 8 miles southwest of Clarksdale, MS, 25 miles north of Cleveland, MS, 75 miles southwest of Memphis, TN, and 130 miles northwest of Jackson, MS. The membership will be subject to approval of the club and debt assumption. If you have been searching for a duck club in the Mississippi Delta, give Michael Oswalt a call for your private showing today.



[Aerial Map Link](#)



[Google Maps Directions](#)



SMALLTOWN
HUNTING PROPERTIES
& REAL ESTATESM

MICHAEL OSWALT
PRINCIPAL BROKER

C: 662-719-3967

O: 769-888-2522

michael@smalltownproperties.com

4848 Main St. - Flora, MS 39071

smalltownproperties.com

15,000+ Followers

Information is believed to be accurate but not guaranteed.