



RECREATIONAL RETREAT  
±603 AC - FOR SALE

4 PARCELS  
MARIPOSA COUNTY

PURCHASE PRICE: ~~\$850,000~~  
\$787,500

**TRI** *Outdoor Properties*

LAND BROKERAGE | Recreational • Agricultural • Conservation

A Division of TRI Commercial Real Estate Services, Inc.



The information in this document was obtained from sources we deem reliable; however, no warranty or representation, expressed or implied, is made as to the accuracy of the information contained herein.



# *Property Photos ~ Recreational Retreat, Mariposa County, CA*





# Property Info ~ Recreational Retreat, Mariposa County, CA

Address: 5893 Mosher Road, Mariposa, CA 95338

APN: 008-040-0050; 008-330-0350;  
008-330-0360; & 008-330-0370.

Zoning: MP Mountain Preserve Zone  
Mainly rural residential use

Elevation: Approximately 1,700 to 3,300 feet.

Latitude: 37.565694

Longitude: -120.034282

MLS #: 222098224

Acres: **±603 Acres**

Price: **\$787,500**

Improvements: Interior road - Dirt

Terms: Cash or submit.



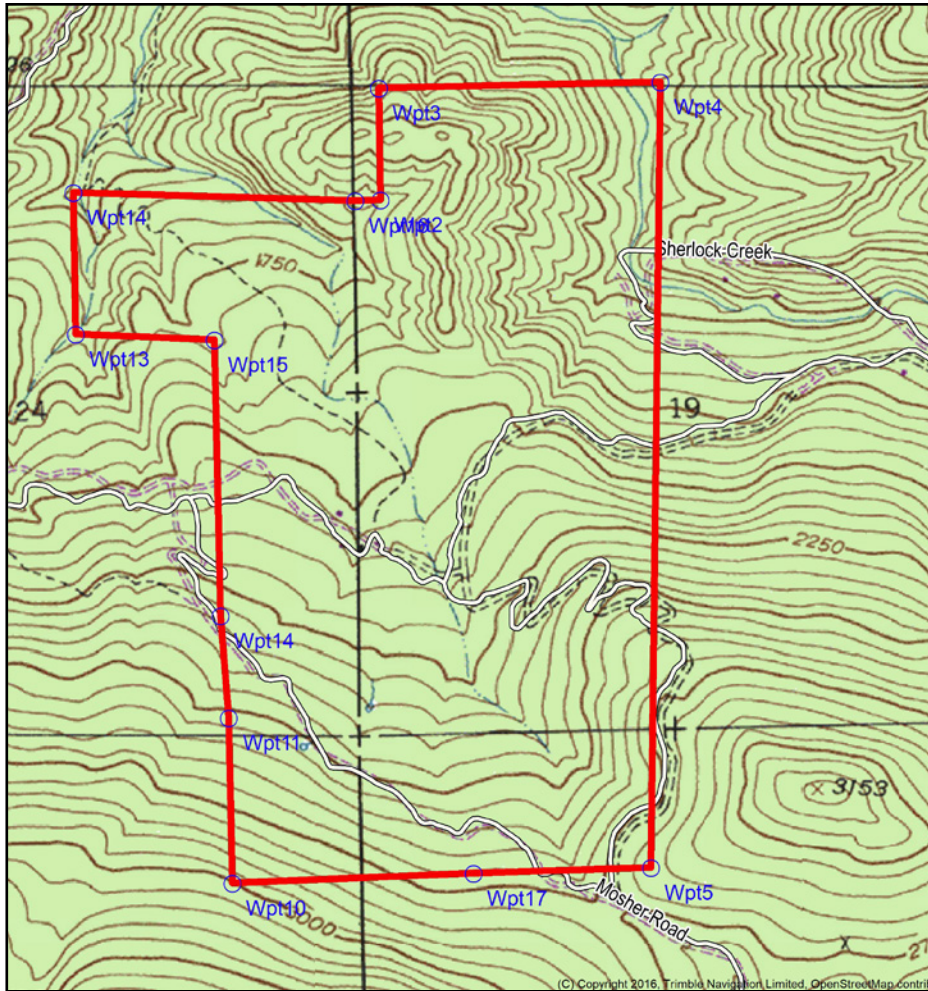
Description: 603 acres of recreational property. Within 5 miles of the city of Mariposa and in proximity of Yosemite National Park. Good hunting of deer, bear, quail, turkey and many others. Property has not been hunted in many years, Natural spring and seasonal creek provide the water for the wildlife. Many activities to explore nearby. Ideal place for a “bug-out” hideaway or “off-grid” remote playground. Priced to sell at agricultural prices but zoned MP for Mountain Preserve which allows for residential.

Directions: From the town of Mariposa take Highway 49 north to West Whitlock Road. Go approximately 4 miles and turn left on Mosher Rd. Go about 1/2 mile to closed gate which is unlocked. Property is behind gate.  
An alternate route by way of State Route 140 through the town of Mariposa, continue on Hwy 140 to East Whitlock Rd., left turn, continue to about +/- 6 miles on East Whitlock Rd. to Mosher Rd., Turn right on Mosher Rd. to dead end at the property gate.



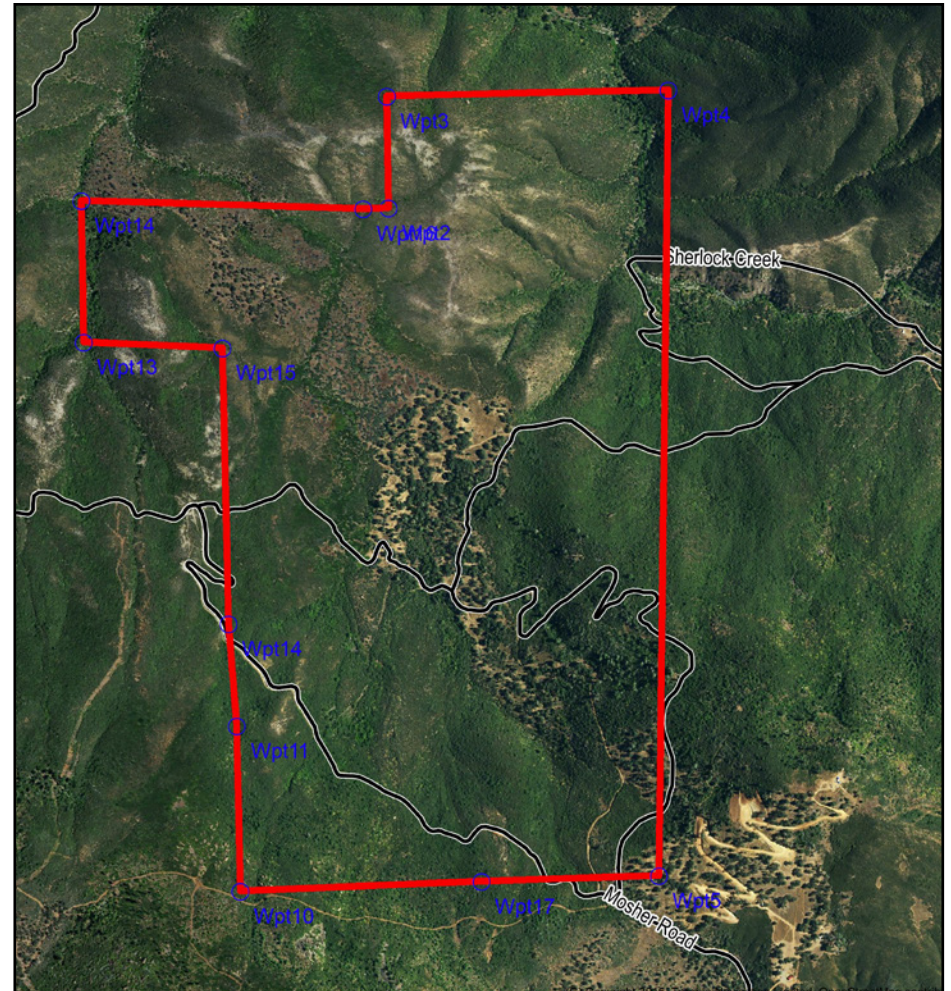
# Property Maps ~ Recreational Retreat, Mariposa County, CA

## Topo Map



DISCLAIMER: The information contained herein is as obtained by this broker from sellers, owners, or other sources. This information is considered reliable, neither this broker nor owners make any guarantee, warranty or representation as to correctness of any data or descriptions and the accuracy of such statements. The correctness and / or accuracy of any and all statements should be determined through independent investigation made by the prospective purchaser. Any offer for sale is subject to prior sale, errors and omissions, change of price, terms or other conditions or withdrawal from sale in whole or in part, by seller without notice and without liability of this broker.

## Aerial Map

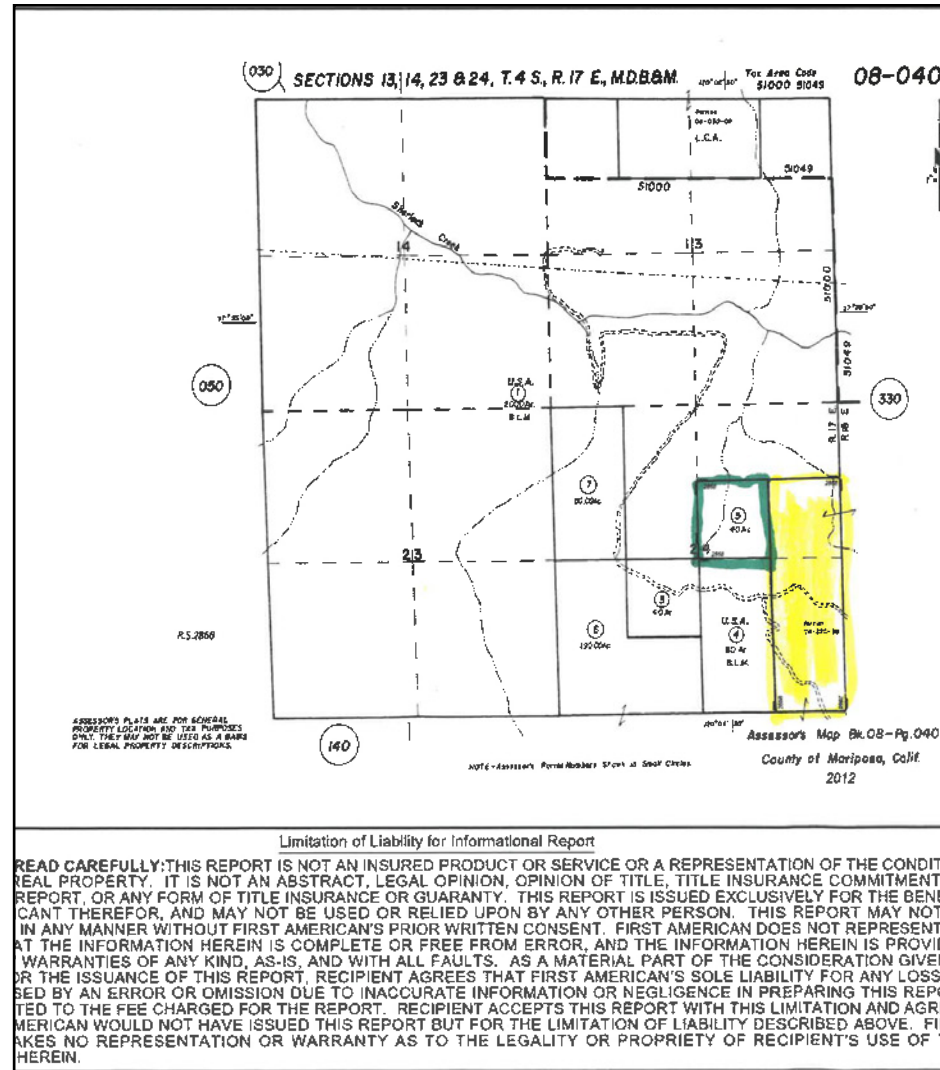


DISCLAIMER: The information contained herein is as obtained by this broker from sellers, owners, or other sources. This information is considered reliable, neither this broker nor owners make any guarantee, warranty or representation as to correctness of any data or descriptions and the accuracy of such statements. The correctness and / or accuracy of any and all statements should be determined through independent investigation made by the prospective purchaser. Any offer for sale is subject to prior sale, errors and omissions, change of price, terms or other conditions or withdrawal from sale in whole or in part, by seller without notice and without liability of this broker.

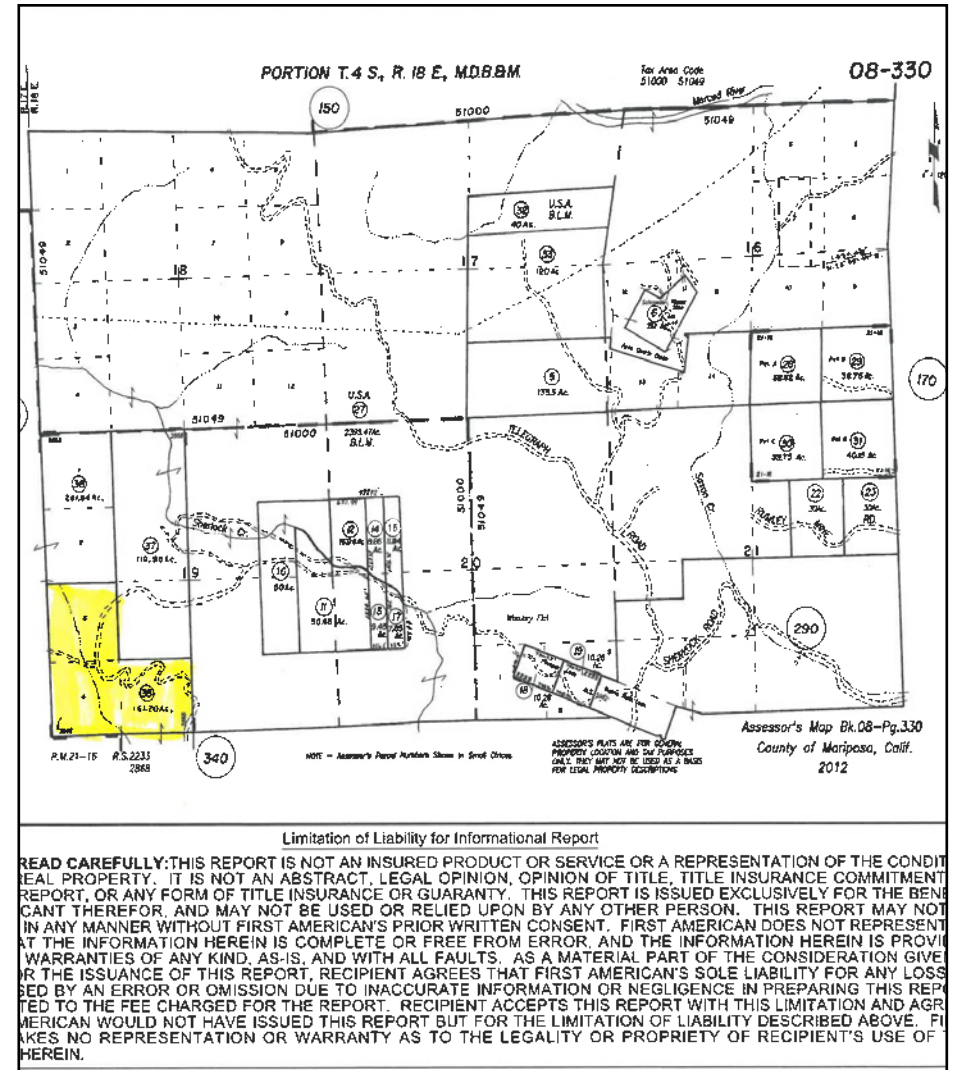


# Property Maps ~ Recreational Retreat, Mariposa County, CA

**APN:** 008-040-0050

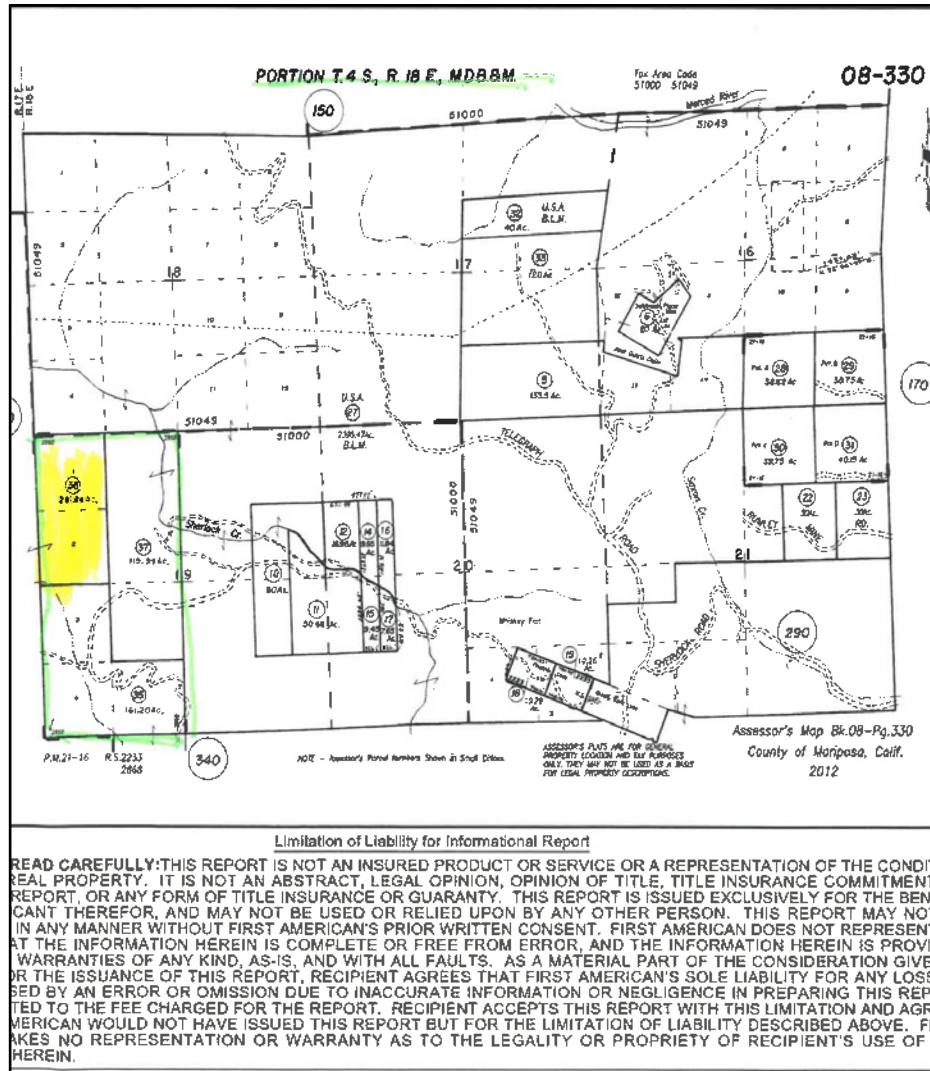


**APN:** 008-330-0350

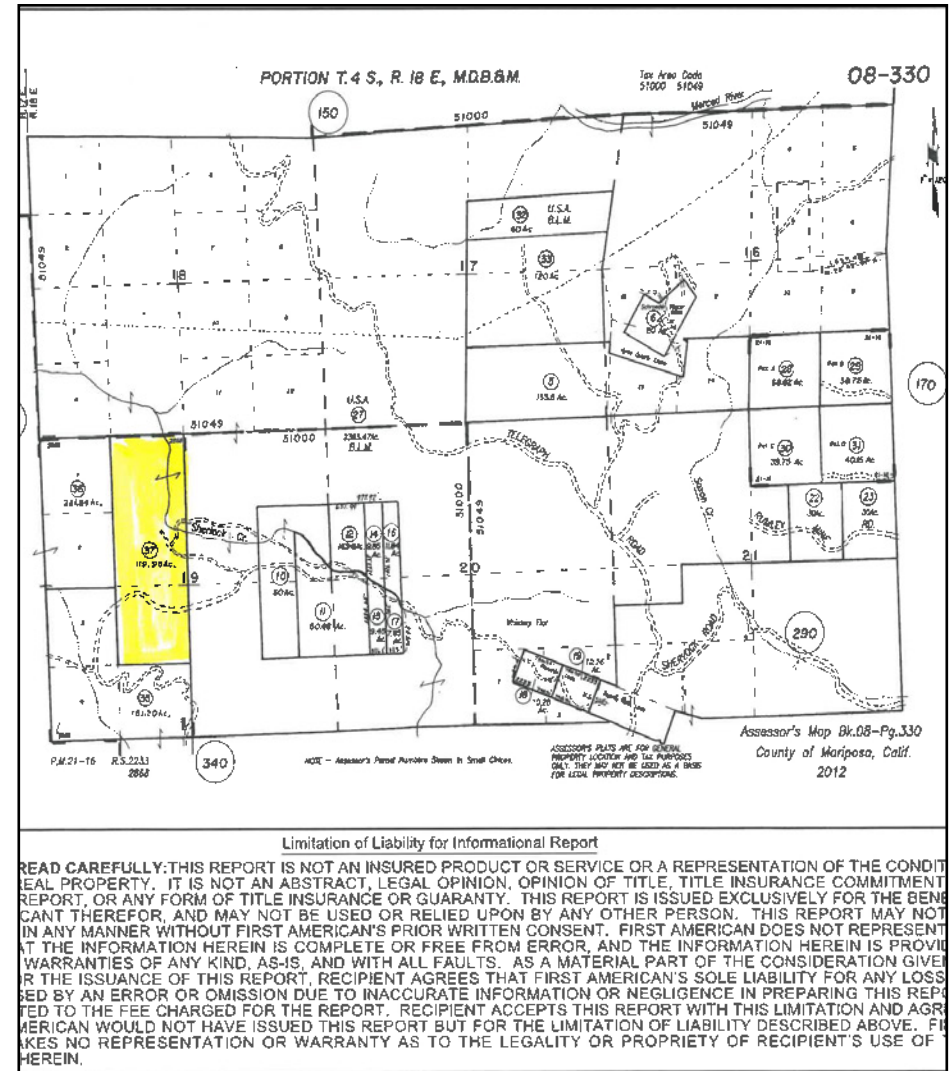


# Property Maps ~ Recreational Retreat, Mariposa County, CA

APN: 008-330-0360

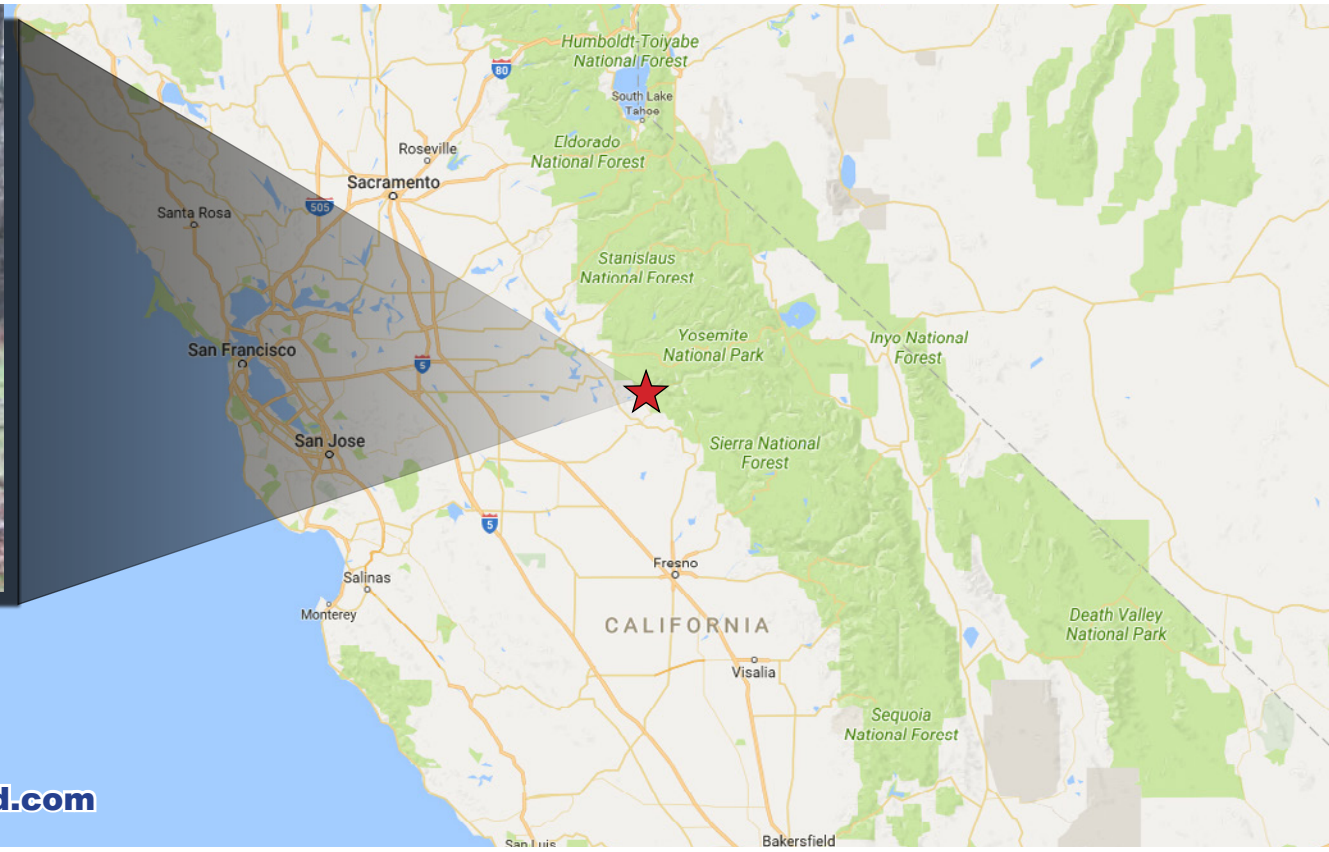


APN: 008-330-0370





# Property Summary ~ Recreational Retreat, Mariposa County, CA



**For Sale: ±603 AC  
\$787,500**

**For Additional information visit [www.Land.com](http://www.Land.com)**

For More Information Contact:



**Mike Kuppenbender**, ALC, CCIM, SIOR  
DRE License #: 00811112  
[mkupp@tricommercial.com](mailto:mkupp@tricommercial.com)  
916.960.5709

**TRI Outdoor Properties**

532 Gibson Drive, Suite 200, Roseville, CA 95678

LAND BROKERAGE | Recreational · Agricultural · Conservation

A Division of TRI Commercial Real Estate Services, Inc.

The information in this document was obtained from sources we deem reliable; however, no warranty or representation, expressed or implied, is made as to the accuracy of the information contained herein.