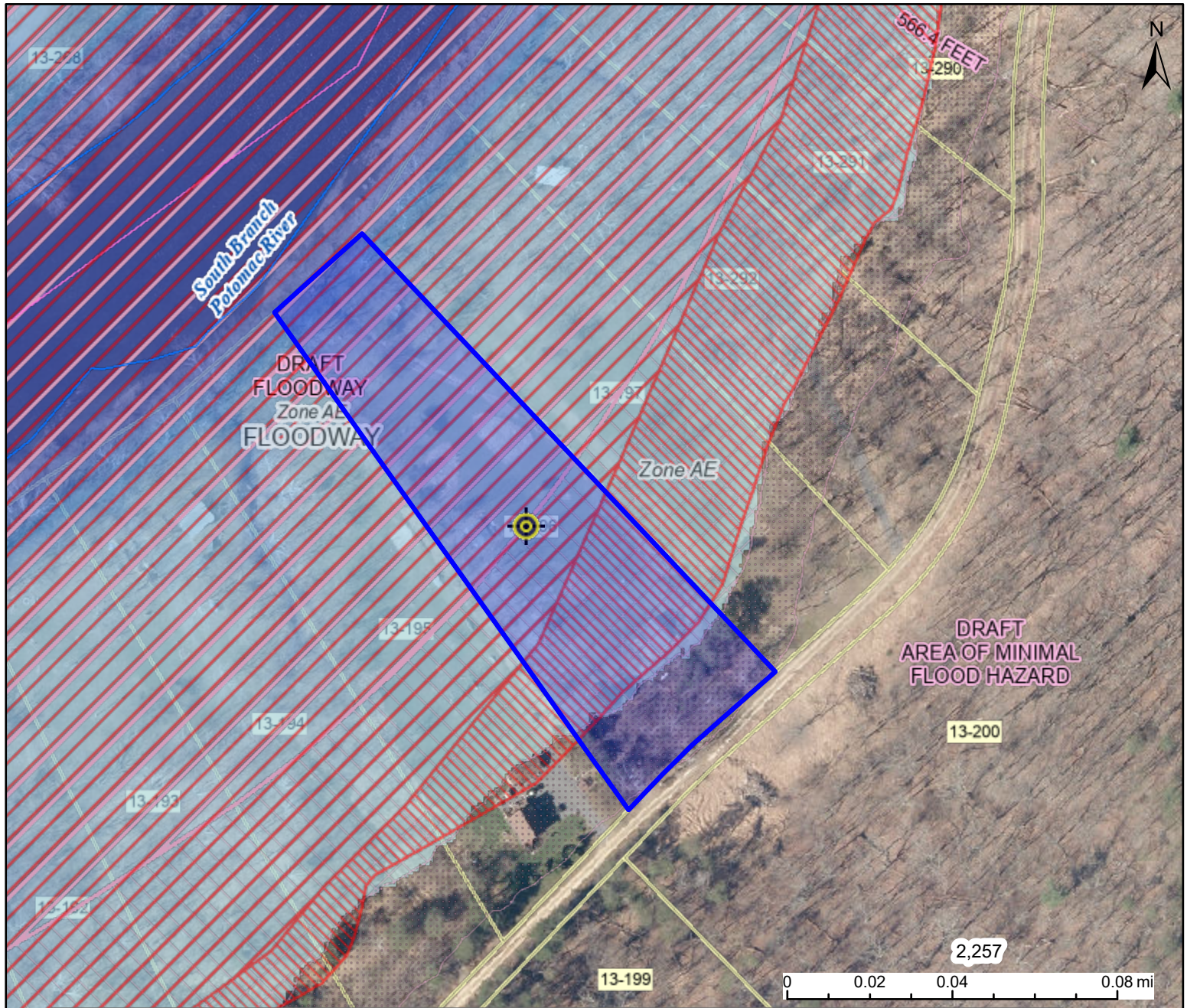


WV Flood Map



This map is not the official regulatory FIRM or DFIRM. Its purpose is to assist with determining potential flood risk for the selected location.

<div><div><div><div><div><div></div><div>Zone AE</div></div></div><div>1-Percent-Annual-Chance Flood Hazard Area With Base Flood Elevation (BFE)</div></div><div><div><div><div><div></div><div>Floodway</div></div></div><div>Regulatory Floodway in AE Zone</div></div></div><div><div><div><div><div></div><div>Zone A</div></div></div><div>1-Percent-Annual-Chance Flood Hazard Area Without BFE (may have Advisory Flood Heights)</div></div><div><div><div><div><div></div><div>Advisory</div></div></div><div>1-Percent-Annual-Chance High Risk Advisory</div></div></div></div><div><div>Download the Full Legend for all flood tool symbols https://www.mapwv.gov/flood/map/docs/wv_flood_tool_legend.pdf</div><div><div>Disclaimer:</div><div>The online map is for use in administering the National Flood Insurance Program. It does not necessarily identify all areas subject to flooding, particularly from local drainage sources of small size. Refer to the official Flood Insurance Study (FIS) for detailed flood elevation data in flood profiles and data tables. WV Flood Tool (https://www.mapwv.gov/flood) is supported by FEMA, WV NFIP Office, and WV GIS Technical Center.</div></div></div></div></div>		<div><div><div><div><div><div></div><div>Flood Info Location</div></div></div><div>Map created on 7/20/2023</div></div></div><div><div><div>User Notes</div><div><div><div><div><div>Flood Hazard Area</div><div>Location is WITHIN the FEMA 100-year floodplain and floodway.</div></div><div><div><div>Flood Zone</div><div>AE (Floodway)</div></div><div><div><div>Stream</div><div>South Branch Potomac River</div></div><div><div><div>Watershed (HUC8)</div><div>South Branch Potomac (2070001)</div></div></div><div><div><div>Flood Height</div><div>Flood Height 3 Refer to FIS report for BFE NGVD29</div></div><div><div><div>Water Depth</div><div>About 7.2 ft (Source: HEC-RAS)</div></div><div><div><div>Elevation</div><div>559.4 ft (Source: FEMA 2016-17) (NAVD88)</div></div><div><div><div>Community & ID</div><div>Hampshire County (ID: 540226)</div></div><div><div><div>FEMA Map & Date</div><div>54027C0039C; Effective Date: 11/7/2002</div></div><div><div><div>Location (lat, long)</div><div>(39.505029, -78.566574) (WGS84)</div></div><div><div><div>Parcel ID</div><div>14-10-0013-0196-0000</div></div><div><div><div>E-911 Address</div><div>337 MOUNTAIN RIVER WAY, Levels, WV, 25431</div></div></div></div></div></div></div></div></div></div></div></div></div></div></div></div></div></div>
---	--	---