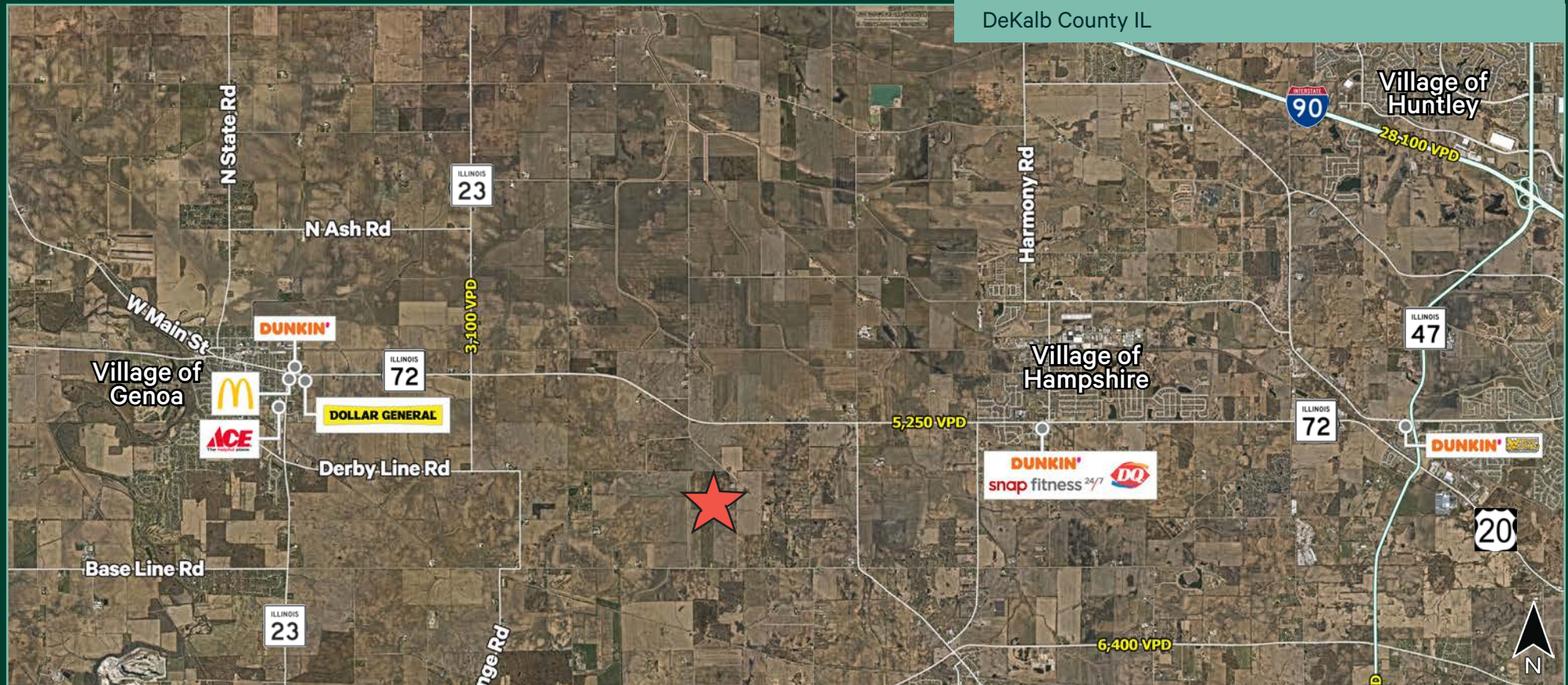


Class A Farmland in DeKalb County, IL

SWQ of New Lebanon Road & Hackman Road
DeKalb County IL



Property Highlights

SWQ of New Lebanon Road & Hackman Road
DeKalb County IL

For Sale ±80 Acres

- + Zoned A-1 Agriculture in Genoa Township
- + Soil P.I. 135.6
- + Farm lease open for 2024
- + Genoa Township, section 36
- + Access to Rt 72 via New Lebanon Rd
- + Coon Creek runs along the west side of the property
- + Tilled
- + PIN Numbers: 03-36-100-008 & 03-36-200-007
- + Taxes: \$ \$4,904
- + Asking Price: \$17,500 / per acre
- + Please call for additional Information

Site Aerial



±80
Acres

\$17,500 per acre
Asking Price

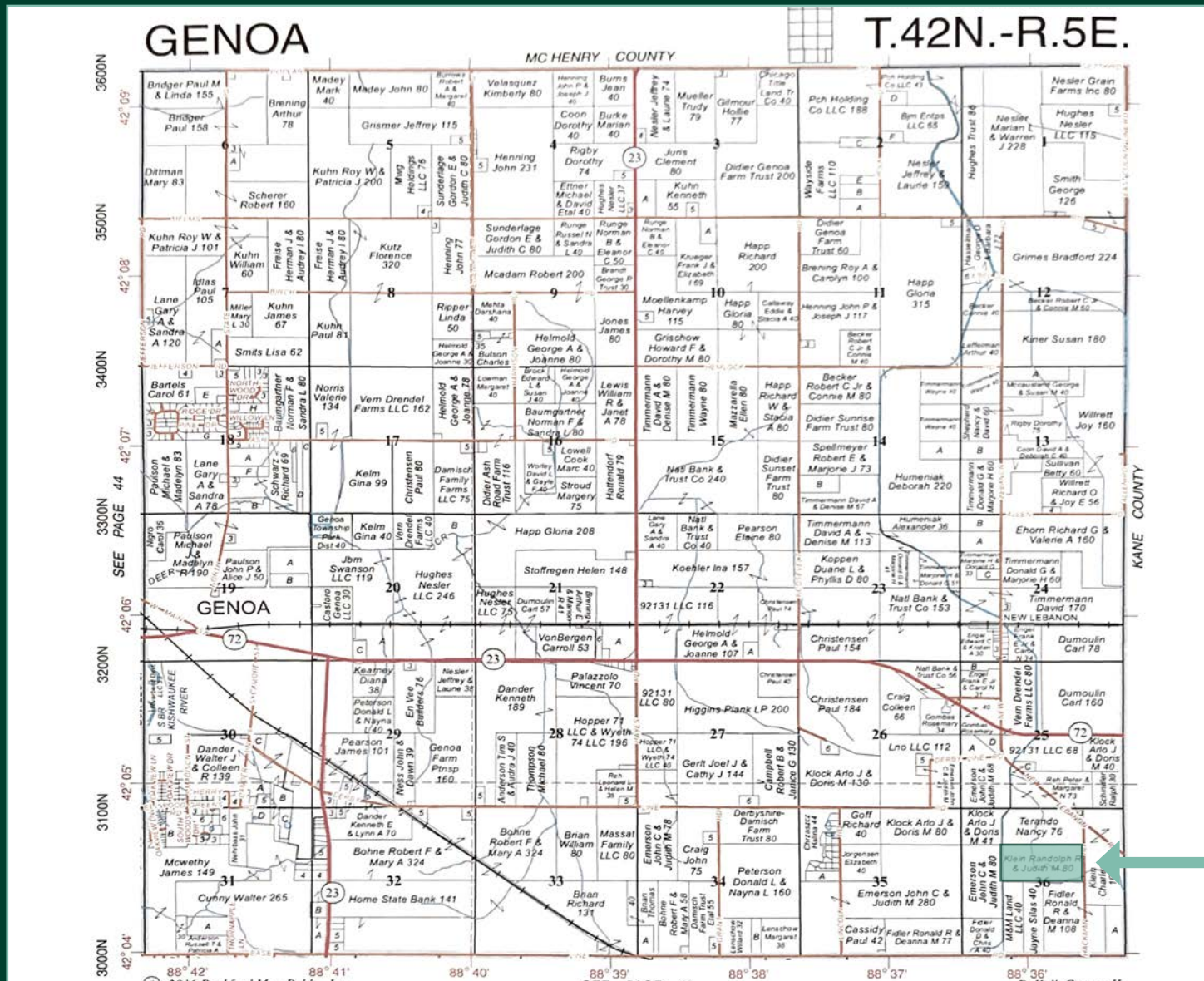
Site Aerials

SWQ of New Lebanon Road & Hackman Road
DeKalb County IL



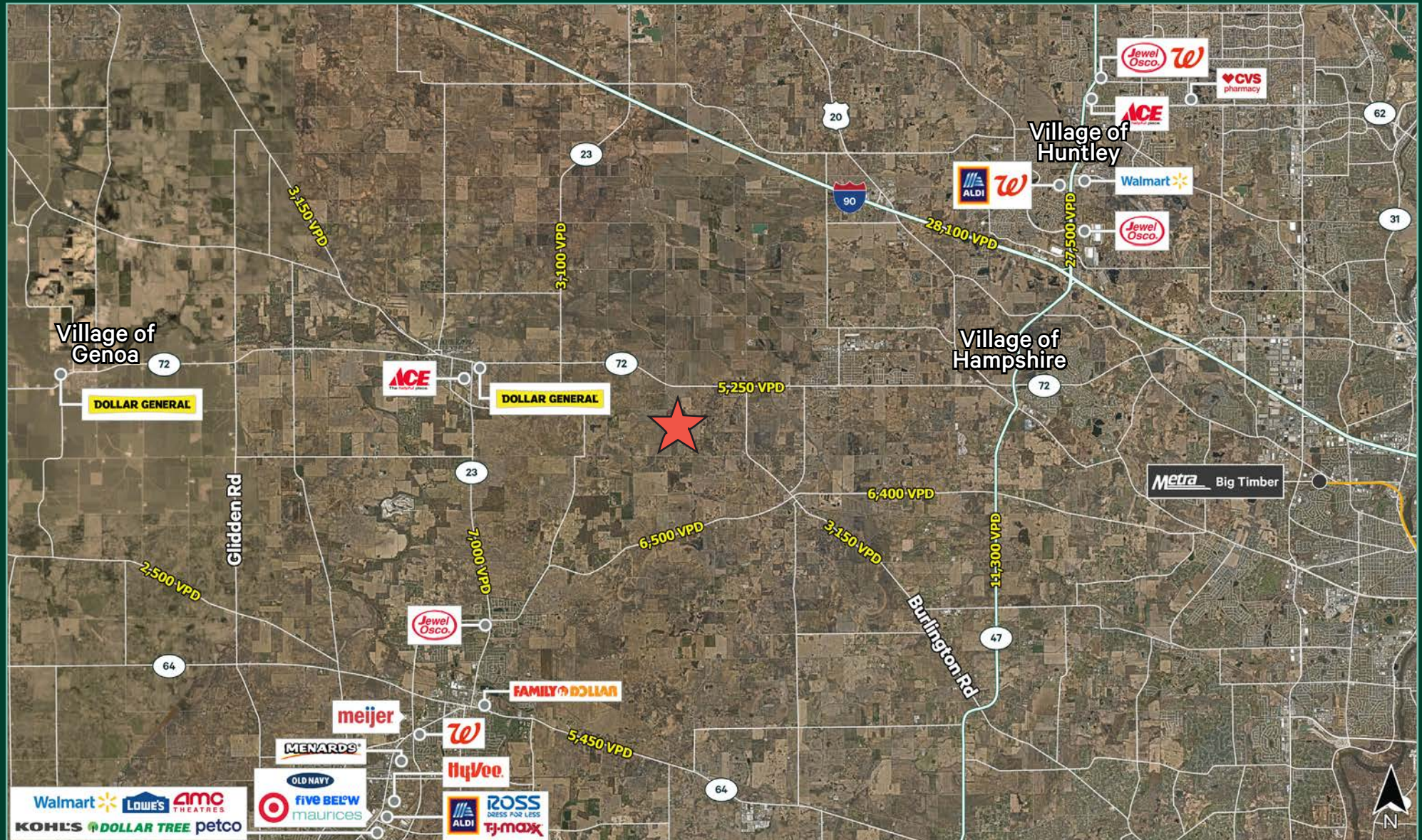
Plat Map

SWQ of New Lebanon Road & Hackman Road
DeKalb County IL



Area Amenities and Transportation Corridors

SWQ of New Lebanon Road & Hackman Road
DeKalb County IL

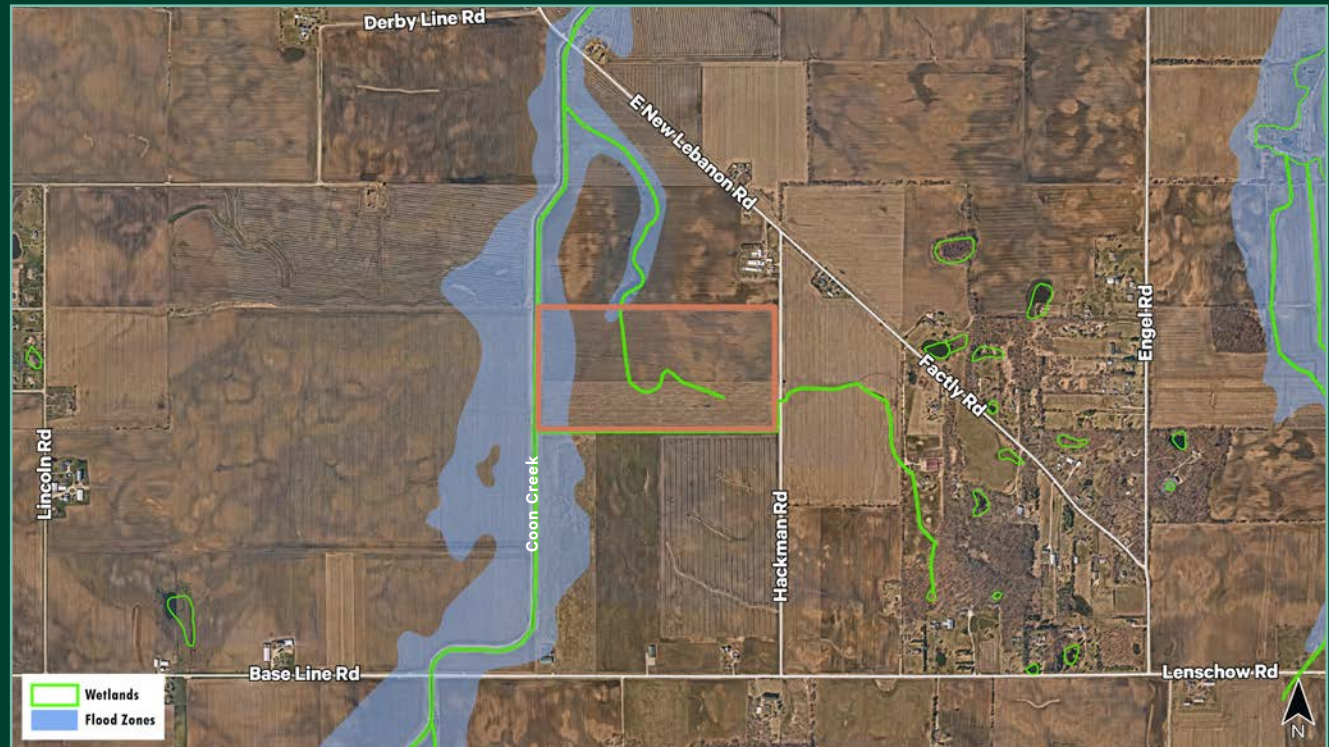


Demographic Snapshot

SWQ of New Lebanon Road & Hackman Road
DeKalb County IL

	1 MILE	3 MILES	5 MILES
Population	137	1,776	9,944
Households	59	652	3,606
Average Household Income	\$127,926	\$121,669	\$124,143
Average Housing Value	\$337,766	\$359,057	\$323,624

Floodplains / Wetlands





Contact Us

Dave Erickson

Senior Associate

+1 630 573 1280

david.erickson@cbre.com

© 2023 CBRE, Inc. All rights reserved. This information has been obtained from sources believed reliable, but has not been verified for accuracy or completeness. You should conduct a careful, independent investigation of the property and verify all information. Any reliance on this information is solely at your own risk. CBRE and the CBRE logo are service marks of CBRE, Inc. All other marks displayed on this document are the property of their respective owners, and the use of such logos does not imply any affiliation with or endorsement of CBRE. Photos herein are the property of their respective owners. Use of these images without the express written consent of the owner is prohibited.

www.cbre.us/lsgoakbrook

CBRE