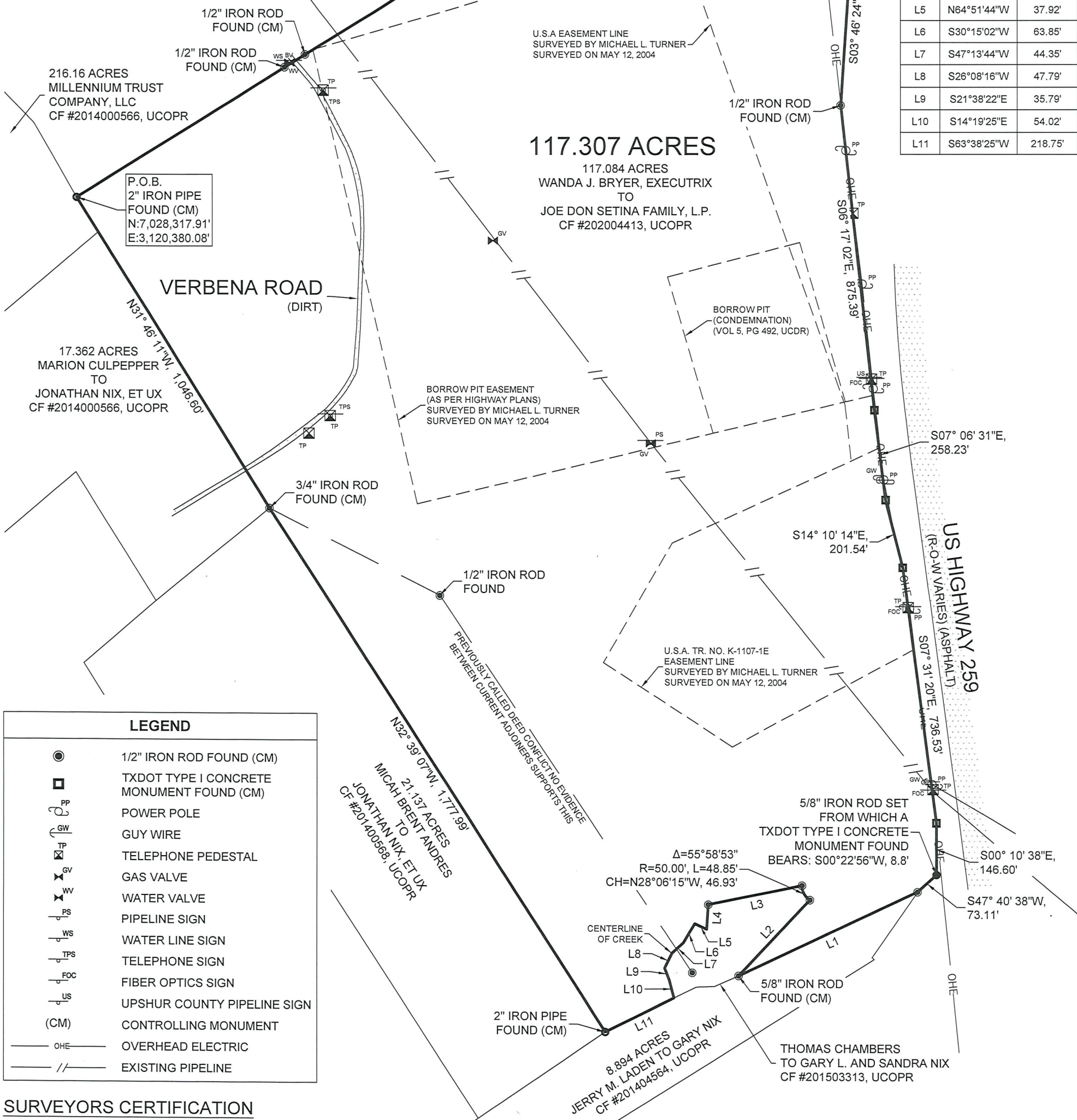


1. BEARINGS ARE BASED UPON THE TEXAS COORDINATE SYSTEM OF 1983 (NAD83), NORTH CENTRAL ZONE.
2. A CERTIFIED METES AND BOUNDS DESCRIPTION HAS BEEN PREPARED UNDER THE SAME JOB NUMBER AS A PART OF THIS PROFESSIONAL SERVICE.
3. THIS PROFESSIONAL SERVICE WAS PERFORMED WITHOUT BENEFIT OF HAVING BEEN FURNISHED A TITLE COMMITMENT. EASEMENTS AND/OR OTHER MATTERS AND/OR ISSUES RELATING TO TITLE COULD AND MAY EXIST.
4. ACCORDING TO TEXAS LOCAL GOVERNMENT CODE, CHAPTER 212.004 AND 212.005, DIVIDING ANY TRACT OR LOT INTO TWO OR MORE PARTS WITHOUT BENEFIT OF A SUBDIVISION PLAT APPROVED AND RECORDED WITH THE COUNTY CLERK, IS A VIOLATION OF CITY ORDINANCE AND/OR STATE LAW, SUBJECTING THE VIOLATOR TO FINES AND/OR THE WITHHOLDING OF UTILITIES AND BUILDING PERMITS.
5. PIPELINE SHOWN ARE APPROXIMATE AND BASED UPON SIGNAGE IN THE FIELD AND OR SHOWN ON THE TEXAS RAILROAD COMMISSION GIS MAP.



Diagram illustrating the location of the 1/2" IRON ROD FOUND (CM) relative to Highway 5 (Asphalt). The rod is located 196.93' from the road centerline, bearing S83° 38' 17"E. A 5/8" IRON ROD SET is also shown near the road.

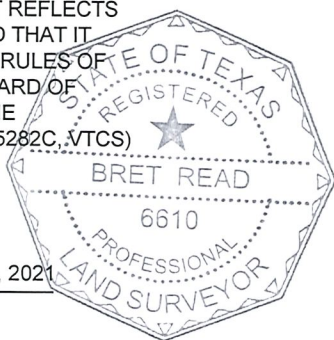
| LINE TABLE | | |
|------------|-------------|---------|
| LINE | DIRECTION | LENGTH |
| L1 | S64°29'43"W | 565.01' |
| L2 | N42°47'29"E | 298.78' |
| L3 | S78°14'17"W | 272.98' |
| L4 | S03°28'46"W | 71.57' |
| L5 | N64°51'44"W | 37.92' |
| L6 | S30°15'02"W | 63.85' |
| L7 | S47°13'44"W | 44.35' |
| L8 | S26°08'16"W | 47.79' |
| L9 | S21°38'22"E | 35.79' |
| L10 | S14°19'25"E | 54.02' |
| L11 | S63°38'25"W | 218.75' |



| | |
|---|--|
|  | 1/2" IRON ROD FOUND (CM) |
|  | TXDOT TYPE I CONCRETE MONUMENT FOUND (CM) |
|  | POWER POLE |
|  | GUY WIRE |
|  | TELEPHONE PEDESTAL |
|  | GAS VALVE |
|  | WATER VALVE |
|  | PIPELINE SIGN |
|  | WATER LINE SIGN |
|  | TELEPHONE SIGN |
|  | FIBER OPTICS SIGN |
|  | UPSHUR COUNTY PIPELINE SIGN (CM) |
|  | CONTROLLING MONUMENT |
|  | OVERHEAD ELECTRIC |
|  | EXISTING PIPELINE |

HEREBY CERTIFY THIS PLAT AS A REPRESENTATION OF A SURVEY
MADE ON THE GROUND UNDER MY SUPERVISION, THAT IT REFLECTS
THE FACTS AS FOUND AT THE TIME OF SAID SURVEY, AND THAT IT
SUBSTANTIALLY CONFORMS TO THE CURRENT GENERAL RULES OF
PROCEDURES AND PRACTICES, ESTABLISHED BY THE BOARD OF
PROFESSIONAL LAND SURVEYING, AS AUTHORIZED BY THE
PROFESSIONAL LAND SURVEYING PRACTICES ACT. (ART 5282C, VTC)

OCTOBER 28, 2021
DATE



360 SURVEYING
310 H. G. MOSLEY PKWY, LONGVIEW, TEXAS 75604
(903) 387-2577 WWW.360SURV.COM
TBPELS 10194293

| | | | |
|--------------|---------------|-----------------|----------------|
| OCT 29, 2021 | DRAWN BY: MTW | CHECKED BY: JBR | JOB # 1097-051 |
|--------------|---------------|-----------------|----------------|