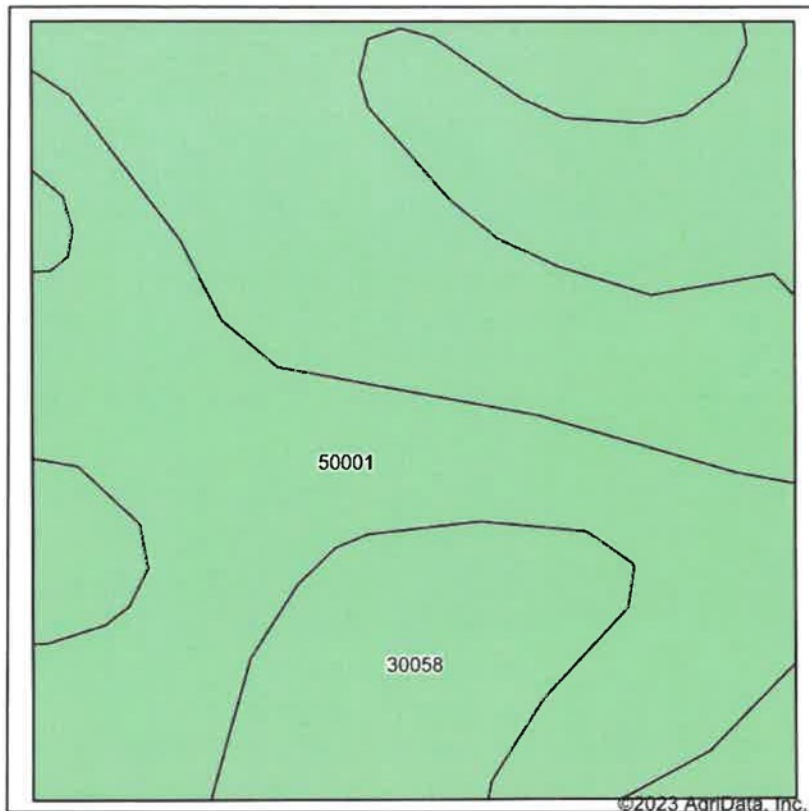
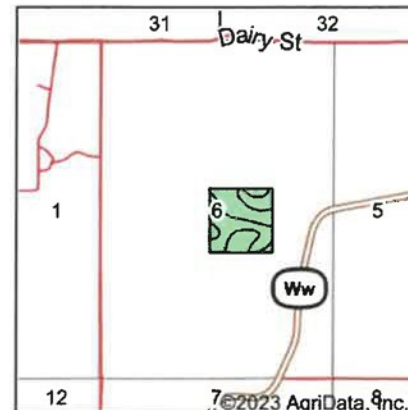


Soils Map



Soils data provided by USDA and NRCS.

©2023 AgriData, Inc.



State: **Missouri**
 County: **Mercer**
 Location: **6-65N-25W**
 Township: **Harrison**
 Acres: **40.24**
 Date: **8/9/2023**

United Country
 NELSON REAL ESTATE

Maps Provided By:

surety
 CUSTOMIZED ONLINE MAPPING
 © AgriData, Inc. 2023 www.AgriDataInc.com



Area Symbol: MO129, Soil Area Version: 24

Code	Soil Description	Acres	Percent of field	Non-Irr Class *c	Alfalfa hay Tons	Caucasian bluestem Tons	Common bermudagrass Tons	Corn Bu	Grain sorghum Bu	Orchardgrass red clover Tons	Soybeans Bu	Tall fescue Tons	Warm season grasses Tons	Winter wheat Bu
50001	Armstrong loam, 5 to 9 percent slopes, eroded	20.30	50.4%	IIIe	5	8	7	4	4	8	2	7	8	2
30058	Gara loam, 14 to 18 percent slopes, moderately eroded	19.94	49.6%	VIe										
Weighted Average				4.49	2.5	4	3.5	2	2	4	1	3.5	4	1

*c: Using Capabilities Class Dominant Condition Aggregation Method