



pache Ranch

Lindrith, NM

Freedom Outfitters LLC
(575) 643-5601

cody@freedomoutfittersllc.com



Key Points



- 20,140 +/- acres
 - 17,500 +/- deeded
 - 2,600 +/- BLM
 - 40 +/- State Lease
- 12 miles of shared Boundary with Jicarilla Apache Nation
- Hunting
 - 73 Elk tags
 - 31 Rifle
 - 10 Archery
 - 32 Cow Elk
 - 26 Mule Deer tags
 - 5 Archery
 - 12 Rifle
 - 5 Muzzleloader
 - 2 November Rut
 - 2 December/January Rut
 - Bear, Lion and Turkey over the counter
- Water
 - Four 18,000 gallon storages
 - 28 fiberglass drinkers
- Improvements
 - 2 Homes
 - 2 Cabins
 - 1 two garage-door shop
 - Skinning Shack

Offered at:
\$42,000,000



Introduction



Sitting inside the legendary Mule Deer territory of the Rio Arriba County lies the Apache Ranch. Located 2 miles from the small community of Lindrith N.M and 2 hours north of Albuquerque N.M. Consisting of a total of 20,000 +/- acres (17,500 +/- deeded, 2,600 +/- BLM, 40 +/- State Lease) and sharing 12 miles of boundary with the Jicarilla Apache Nation.



Hunting

The top 5 record holders scored for both typical and non-typical Mule Deer killed in New Mexico's history came out of Rio Arriba County. Accompanying these trophy deer on this ranch are also an abundant population of Elk. With over 25 Mule Deer tags a year and over 70 Elk tags a year this ranch is a hunters dream.



Water

The Apache Ranch is extremely well watered with a new water system constructed within the last 5 years tailored to wildlife. This includes four 18,000 gallon storages. These storages gravity flow to 28 different fiberglass drinkers spread throughout the ranch.



Topography

The Apache Ranch consists of a diverse array of vegetation and terrain. It has large mesas that transition into cedar breaks with scattered sagebrush and native grasses. Elevations vary from around 6,500 feet in the low lying areas to close to 7,500 feet above.

Rainfall in this region historically has averaged around 15 inches annually.



Improvements

At the Apache Ranch headquarters there is a 1800+/- sqft main house along with an additional managers home at 1,330 +/- sqft. There is also a 1,200 +/- sqft shop. The ranch is also complete with a hunting camp. It consists of two bunkhouses and a newly constructed skinning shack. Other improvements include a concrete RV space; along with hookup, working corrals, and multiple storage containers.





Brokers



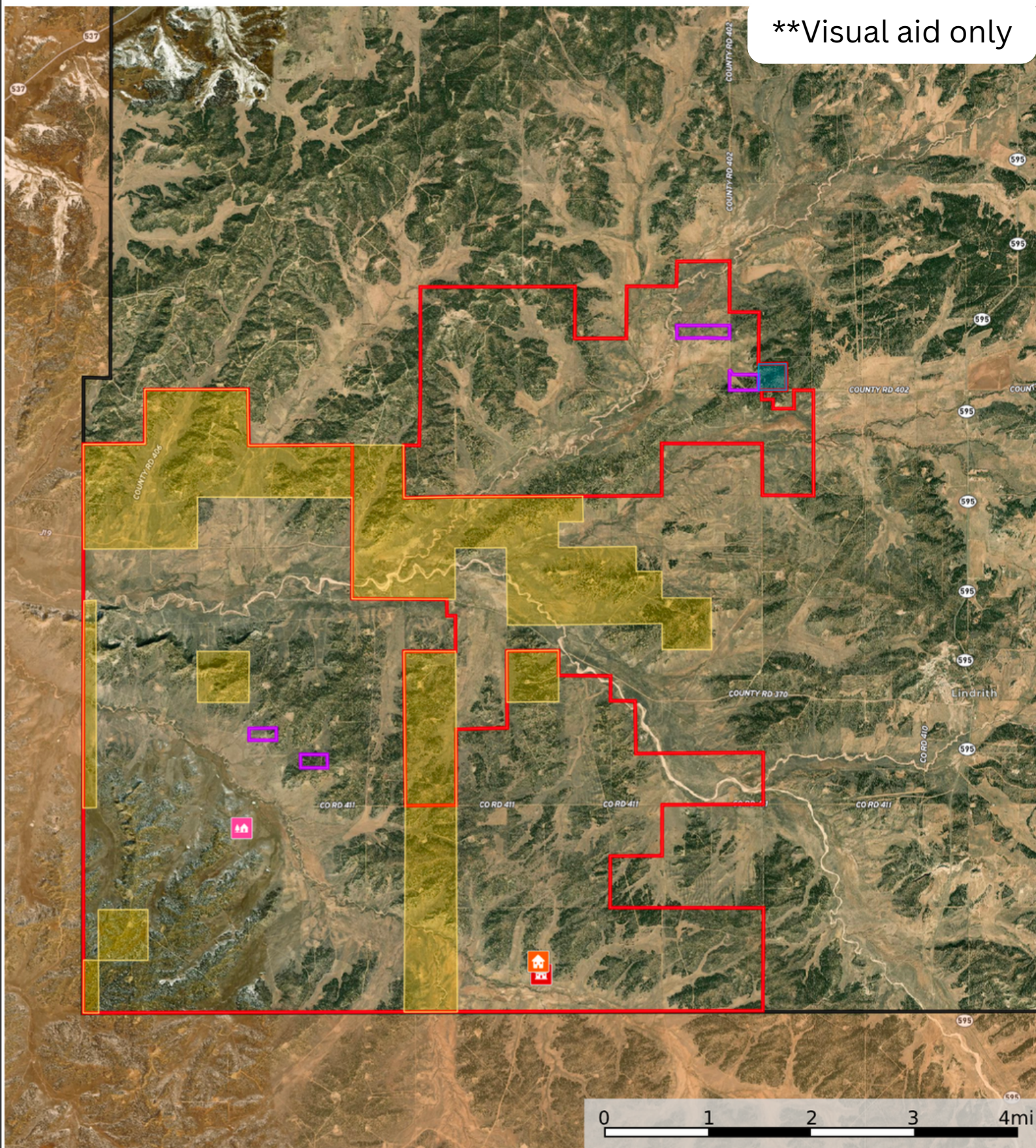
Comments

The Apache Ranch offers the opportunity to own one of the premiere mule deer and elk hunting ranches in the state of New Mexico. It truly is an outdoorsman's paradise. The current owners have meticulously developed the ranch in order to enhance and enrich the already extensive elk and mule deer population. Freedom Outfitters has also been privileged to handle all of the outfitting on the Apache Ranch. This offers an exclusive insight to not only the wildlife but the ranch itself.

Map

Apache Ranch
New Mexico, AC +/-

**Visual aid only



- Cabin
- House
- Main House
- Apache Ranch
- Jicarilla
- Inholdings
- State Lease
- BLM

Wildlife



****While the information presented herein was obtained from sources deemed reliable, it is in no way guaranteed by Freedom Outfitters LLC, the exclusive agent of the seller. Prospective buyers should verify all facts. Properties are subject to price change, withdrawals, corrections, or prior sales.**