

Moore Road/Hardy Lane Pasture Lots

Each Lot Contains:

- +300 Feet of Paved Road Frontage
- Great Homesite Locations
- Maintained Pasture
- Creeks and a Pond
- Bring your own Custom Home Builder to create the perfect Mini-Farm Estate

Restrictions:

- All homes must be Stick- Built and +1500 Sq. Feet
- No Mobile Homes, Trailers, or Dog Kennels
- Barndominiums Accepted through approval from Spalding County Planning and Zoning
- Closing is contingent on pending survey approval with the Spalding County Board of Commissioners

Schools:

- Griffin High School ~ 8 Miles
- Cowan Road Middle School ~ 5 Miles
- Cowan Road Elementary School ~ 5 Miles
- Skipstone Academy ~ 6 Miles
- Strong Rock Christian Academy ~ 19 Miles

Lot Size and Price:

- Lot 1: 7.50 Acres - \$187,500 (\$25,000/AC) ~ 1,800 Feet of Road Frontage ~ County Water Available
- Lot 2: 7.80 Acres - \$156,000 (\$20,000/AC) ~ Double Road Frontage ~ County Water Available
- Lot 3: 8.16 Acres - \$183,600 (\$22,500/AC) ~ Barn Attached
- Lot 4: 10.73 Acres - \$214,600 (\$20,000/AC) ~ County Water Available
- Lot 5: 10.95 Acres - \$219,000 (\$20,000/AC) ~ County Water Available
- Lot 6: 17.03 Acres - \$383,175 (\$22,500/AC) ~ Pond
- Lot 7: 16.35 Acres - \$302,475 (\$18,500/AC)
- Lot 8: 14.89 Acres - \$297,800 (\$20,000/AC) ~ 1,000 Feet of Creek Frontage
- Combined Acreage Lot 6-8: 48.27 Acres - \$892,995 (\$18,500/AC)

Contact:

Nathan Hunt

(478)-973-4134

wnhunt.timber@gmail.com



Moore Road/Hardy Lane Pasture Lots

Moore Road SD

Spalding County, Georgia, 92 AC +/-



 Boundary

Nathan Hunt

P: (478)-954-1149

todd.timber@gmail.com

404 Church Street Macon, Georgia 31217

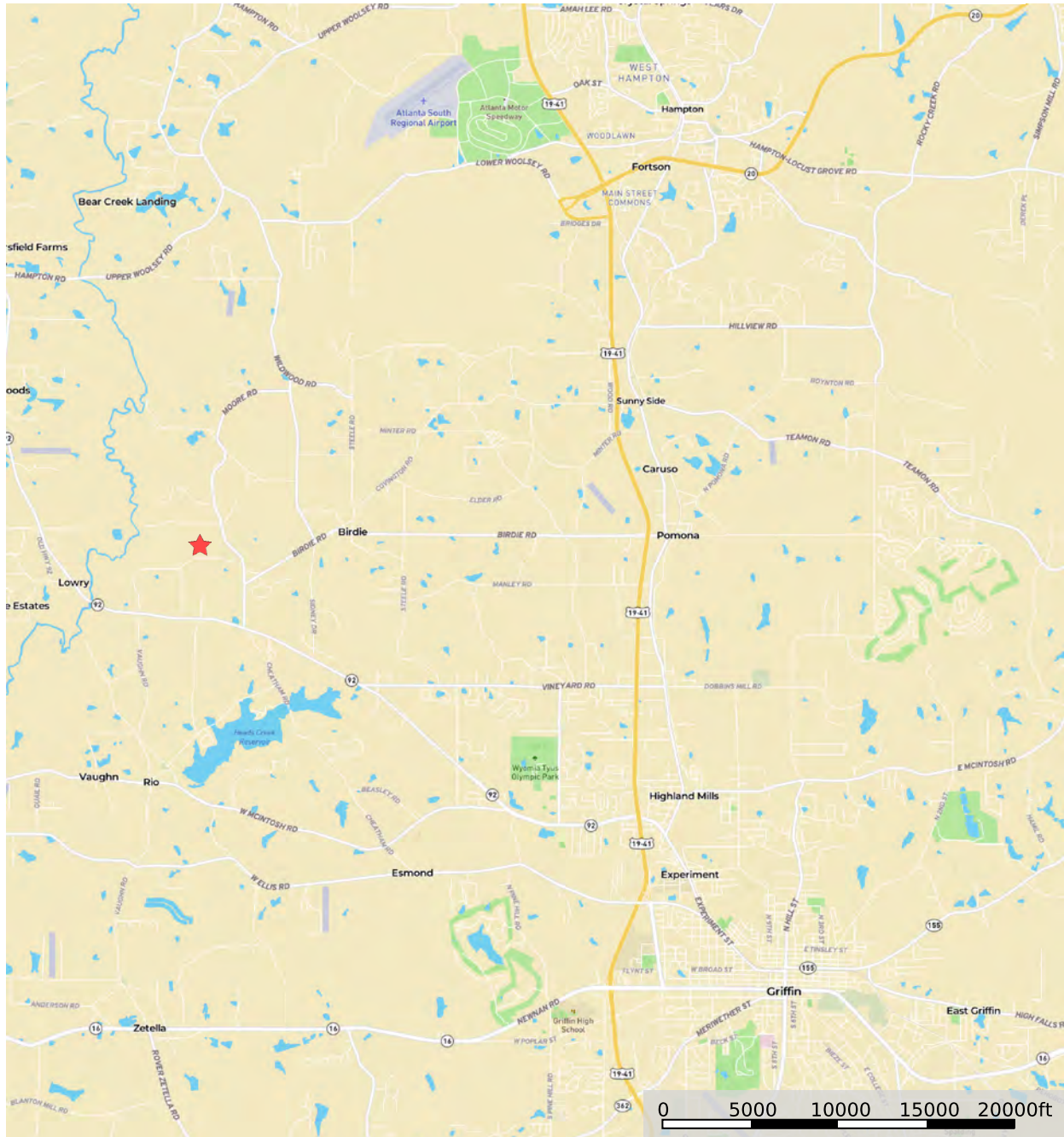


The information contained herein was obtained from sources deemed to be reliable. Land id™ Services makes no warranties or guarantees as to the completeness or accuracy thereof.

Location Maps

Hardy Lane/Moore Road - Location

Spalding County, Georgia, 93 AC +/-



★ Star

Nathan Hunt

P: (478)-954-1149

todd.timber@gmail.com

404 Church Street Macon, Georgia 31217



The information contained herein was obtained from sources deemed to be reliable. Land id™ Services makes no warranties or guarantees as to the completeness or accuracy thereof.

Spalding County, Georgia, 93 AC +/-



P: (478)-954-1149

todd.timber@gmail.com

404 Church Street Macon, Georgia 31217



The information contained herein was obtained from sources deemed to be reliable.

Land id™ Services makes no warranties or guarantees as to the completeness or accuracy thereof.