

[CLICK HERE FOR A 360° AERIAL VIDEO](#)

JORDAN  TROTTER
L A N D

MCCORMICK COUNTY

35 AC

SADDLE CLUB ROAD PLUM BRANCH, SC 29845

\$350,000

35 AC

ZONE | AG

APN| 142-00-00-011

This 35 acre property is located in Plum Branch, SC in McCormick County. The land is 0.27 miles from Clarks Hill Lake and 0.2 miles from Main Street in Plum Branch.

The site is a fully wooded 35.06 AC tract of land. It offers 23 year old planted pine and a pond. It is zoned AG. This would make a perfect spot for a home near the lake or recreational property for outdoor pursuits.

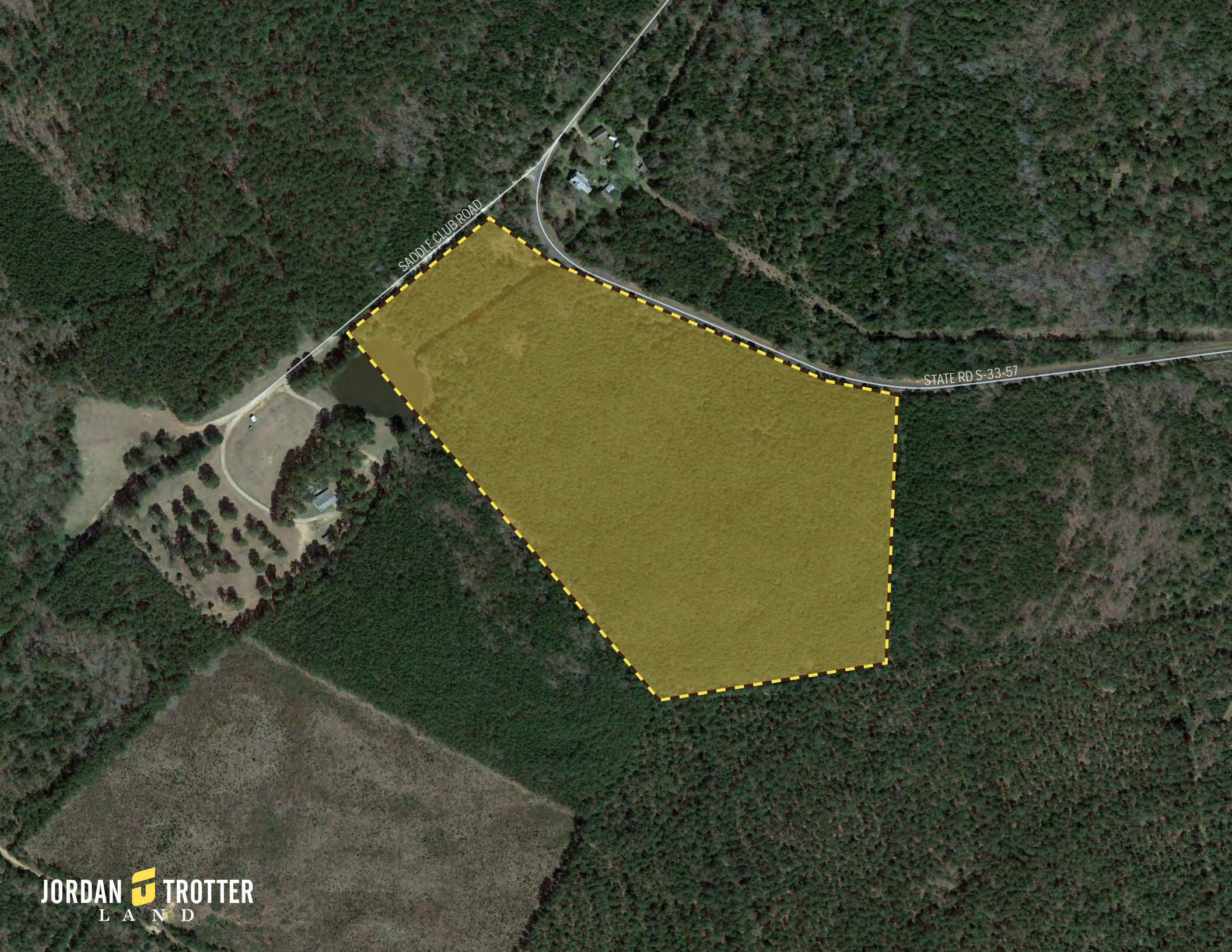
JORDAN TROTTER
LAND

TREY HARGROVE

trey@jordantrotter.com
706•736•1031

BILL HARRIS

bill@jordantrotter.com
706•736•1031



SADDLE CLUB ROAD

STATE RD S-33-57



MCCORMICK



US ROUTE 378

PLUM BRANCH

PLUM BRANCH ROAD

SADDLE CLUB ROAD

FISHING VILLAGE
CONVENIENCE STORE

J SITE

PLUM BRANCH YACHT
CLUB & LAKESIDE GRILL

GEORGIA

SOUTH CAROLINA

HIGHWAY 285

LINCOLNTON

MODOC