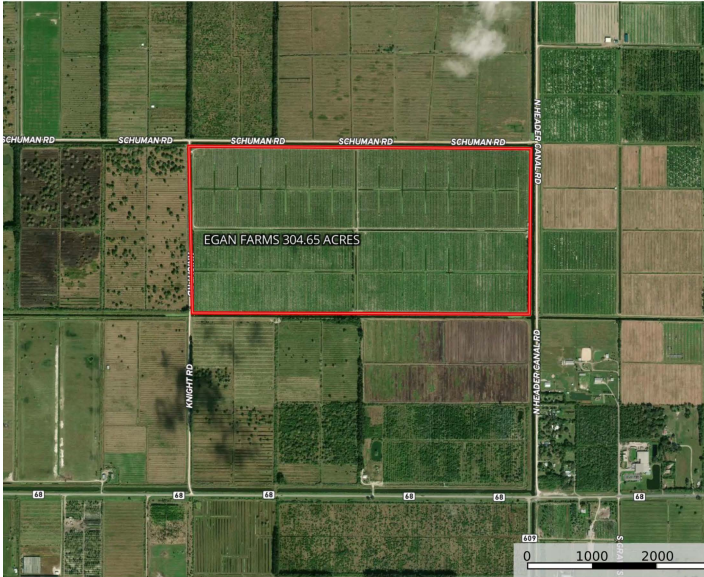


SALE

KNIGHT ROAD AT SCHUMANN RD GROVE

TBD Schumann Rd Fort Pierce, FL 34945

Header Canal at Schumann Road Grove
AC +/-



www.ficoldwellbanker.com 411 N US Highway 1, Fort Pierce, FL 34950



OFFERING SUMMARY

Sale Price:	\$900,000
Available AC	25
Lot Size:	25 Acres
Price / Acre:	\$36,000
Zoning:	AG-5
Market:	Port Saint Lucie MSA
Submarket:	Fort Pierce

PROPERTY OVERVIEW

Producing Lemon and Red Grapefruit Citrus Grove, Excellent Grove Drainage Infrastructure in place, Micro-sprinkler Irrigation system, Local Drainage District Canals along 3 sides, connected to North Saint Lucie Drainage District, Pumps into adjacent to SFWMD Canal 25 (Belcher Canal). Electric and Telephone Available in the Area. Good soils; see brochure for soil map. Extensive frontages and access on three County Roadways..

PROPERTY HIGHLIGHTS

- Producing Lemon and Red Grapefruit Citrus Grove.
- Excellent Grove Drainage Infrastructure in place, No Wetlands,
- Extensive frontages and access on three County Roadways.
- Agricultural Exemption for Taxes,
- Potential for Owner Financing,

OTHER RESOURCES

Philip Strazzulla, LLC
772 216 4975

Frank Strazzulla
772 473 0826



**COLDWELL BANKER
COMMERCIAL
PARADISE**

SALE

KNIGHT ROAD AT SCHUMANN RD GROVE

TBD Schumann Rd Fort Pierce, FL 34945



PROPERTY DESCRIPTION

Producing Lemon and Red Grapefruit Citrus Grove, Excellent Grove Drainage Infrastructure in place, Micro-sprinkler Irrigation system, Local Drainage District Canals along 3 sides, connected to North Saint Lucie Drainage District, Pumps into adjacent to SFWMD Canal 25 (Belcher Canal). Electric and Telephone Available in the Area. Good soils; see brochure for soil map. Extensive frontages and access on three County Roadways..

LOCATION DESCRIPTION

From I-95 at Orange Ave drive 7.3 Miles west to Knight Road, then Right Turn (North) 8/10ths of a Mile to the Property on your Right, just south of Schumann Road,

SITE DESCRIPTION

Producing Lemon and Red Grapefruit Citrus Grove, Excellent Grove Drainage and Irrigation Infrastructure in place,

Philip Strazzulla, LLC
772 216 4975

Frank Strazzulla
772 473 0826



COLDWELL BANKER
COMMERCIAL
PARADISE