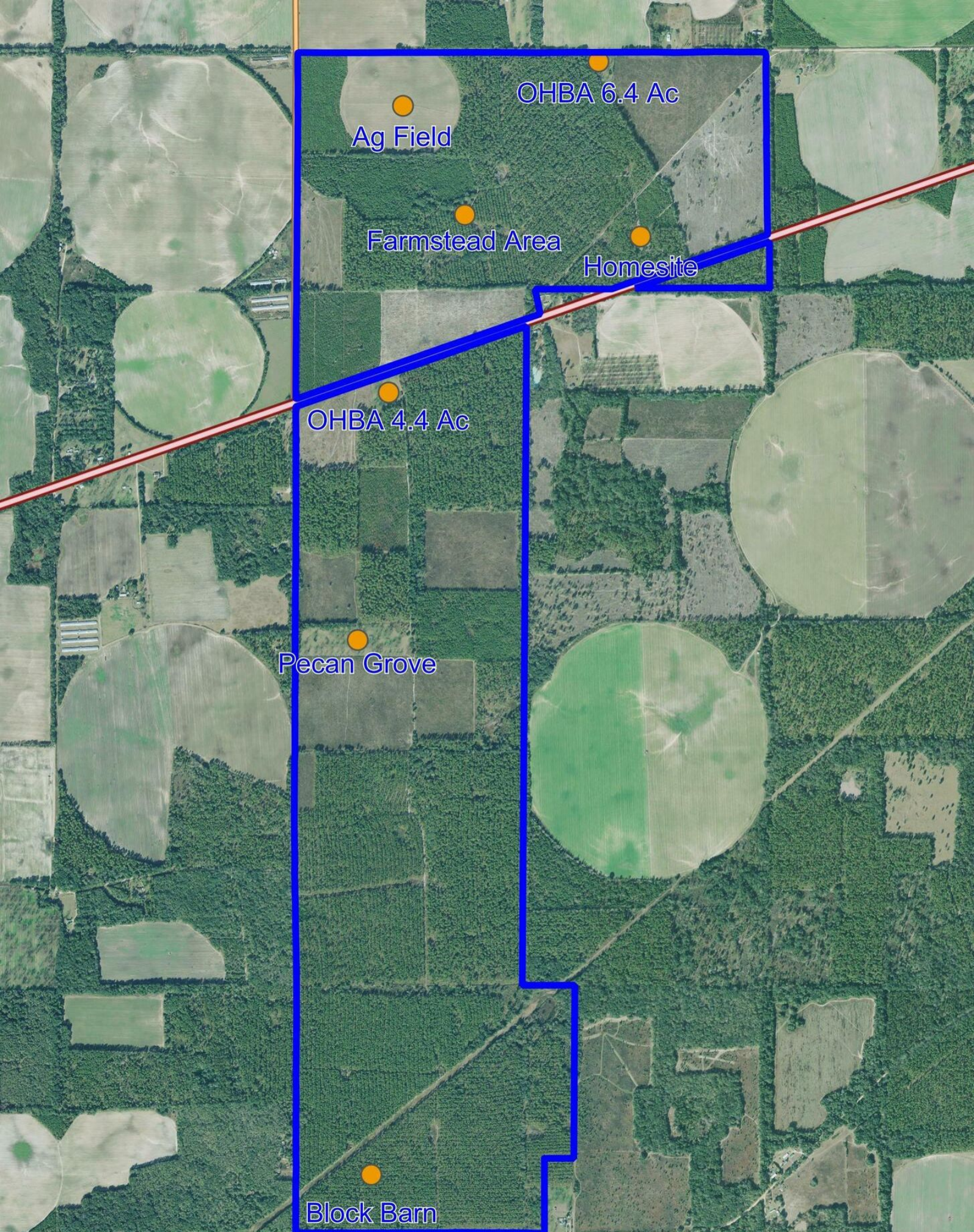


FOREST LODGE FARM

5009 HWY 97
CAMILLA, GA 31730

Jeremiah Thompson
C: 352.255.3670
jeremiah.thompson@svn.com

Austin Fisher
C: 850.545.9132
austin.fisher@svn.com



OHBA 6.4 Ac

Ag Field

Farmstead Area

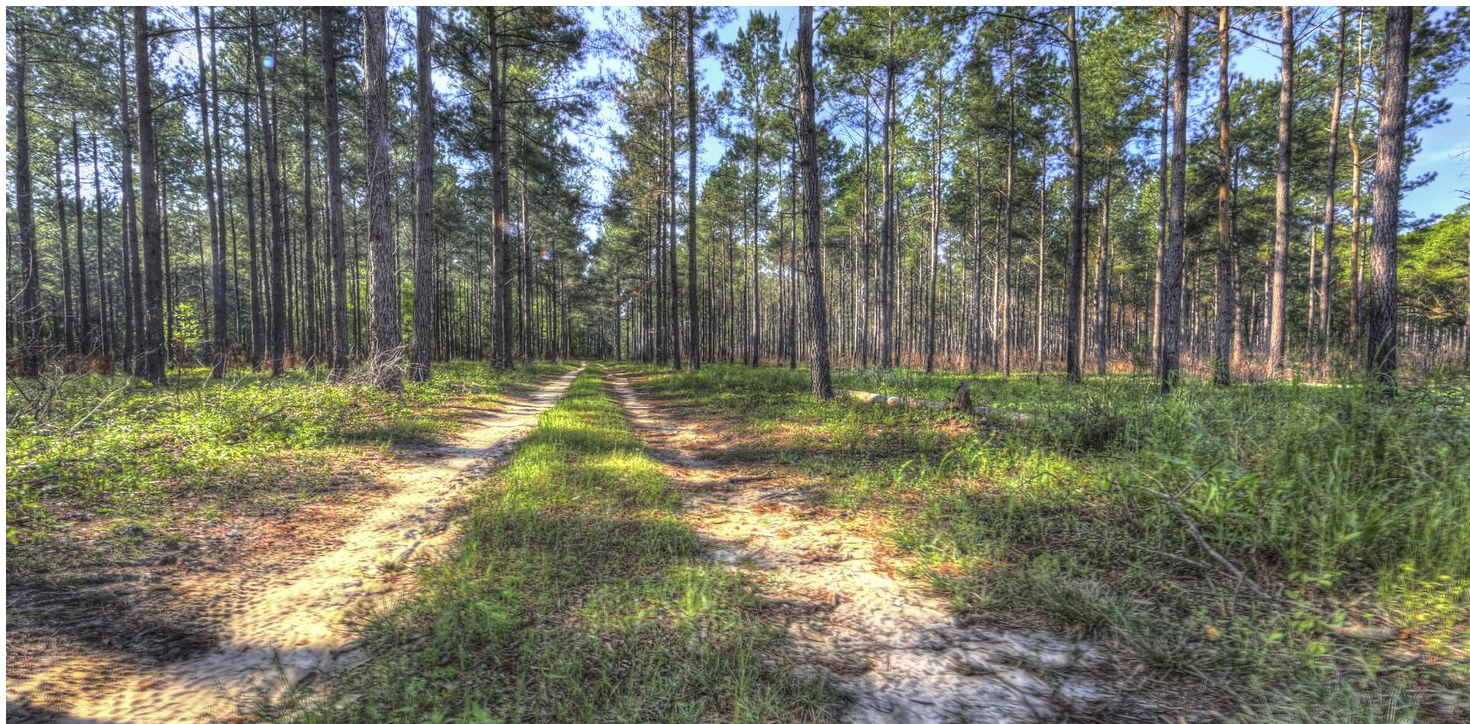
Homesite

OHBA 4.4 Ac

Pecan Grove

Block Barn





Sale Price

\$5,350,000

OFFERING SUMMARY

Acreage: 1,514 Acres

Price / Acre: \$3,534

City: Camilla

County: Mitchell

Property Type: Timber / Recreation

Video: [View Here](#)

PROPERTY OVERVIEW

Forest Lodge Farm is 1,514 ± acres of excellent timber and recreation land in Mitchell County, Georgia. The property features 1,512 ± Upland Acres and 2 ± Wetland Acres with over 6 ± miles of road frontage. Forest Lodge Farm is under a conservation easement by the State of Georgia to be utilized as a working forest and recreational land.

The timber on site is a mixture of well-maintained Slash & Longleaf Pine at various age classes that are set up for perpetual harvest, creating a self-sustaining working timber farm. The property also features 50 ± acres of improved cropland under center pivot irrigation, ready to produce. The recreational components of the property cannot be underscored enough as it features an excellent population of game, such as deer, turkey, and quail.

Forest Lodge Farm is a premier income-producing property with plenty of merchantable timber, excellent recreational components, high and dry land, and an excellent road network. Contact Austin and JT today to set up your showing!



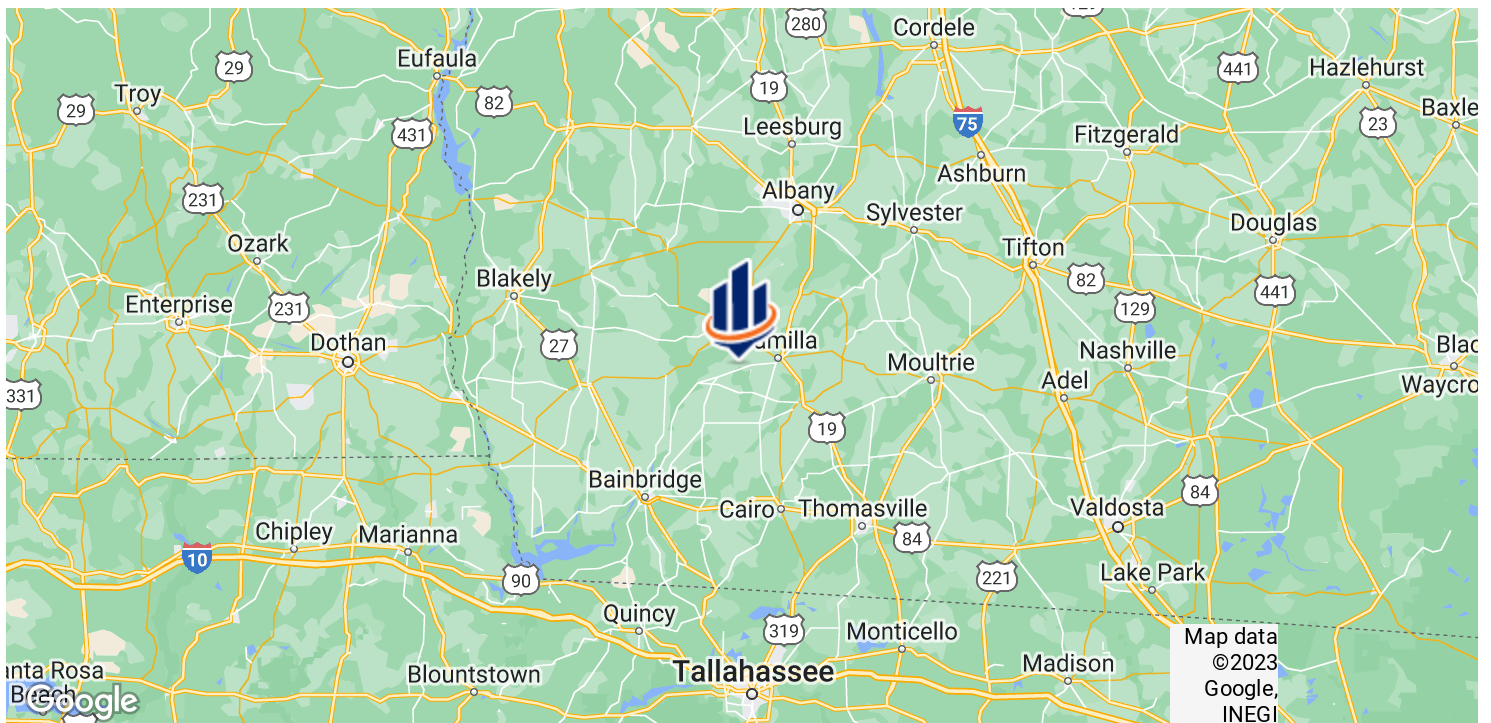
SPECIFICATIONS & FEATURES

Land Types:	<ul style="list-style-type: none">• Conservation Easement• Timberland
Uplands / Wetlands:	1512 ± Upland Acres / 2 ± Wetland Acres
Soil Types:	Troup; Wagram; Bonneau; Albany; Lucy; Grady; Norfolk
Taxes & Tax Year:	\$13,978.58 for 2023
Zoning / FLU:	AG
Water Source & Utilities:	Electricity, Well, & Septic
Road Frontage:	3 ± Miles on Sassafras Tea Rd; 1.3 ± Miles on 97; 1.25 ± Miles on Pipeline Rd; 3500 ± FT on Wiregrass Rd
Nearest Point of Interest:	Camilla - 6 ± Miles Cairo - 23 ± Miles Bainbridge - 25 ± Miles Albany - 27 ± Miles Thomasville - 30 ± Miles
Current Use:	Working Forest & Recreation
Land Cover:	Mixture of Slash & Longleaf Pine; Improved Cropland
Structures & Year Built:	2200 ± SF Single-Family Residence; Barn Type Structures
Survey or Site Testing Reports:	Available Upon Request



LOCATION & DRIVING DIRECTIONS

Parcel:	00400-005-000
GPS:	31.2062642, -84.31149289999999
Driving Directions:	Contact Listing Agents
Showing Instructions:	Contact Listing Agents

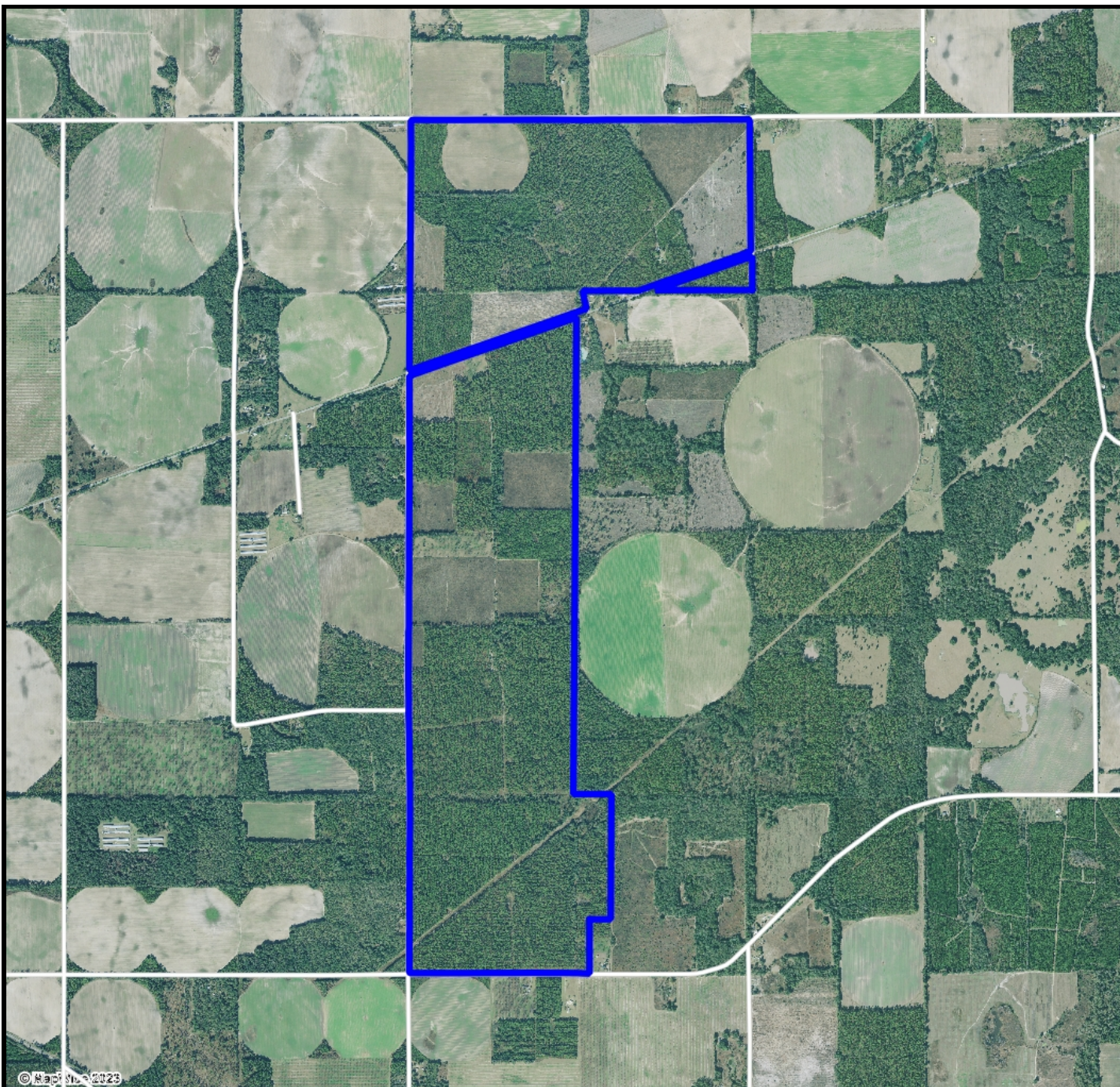






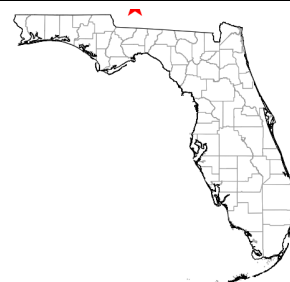
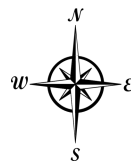




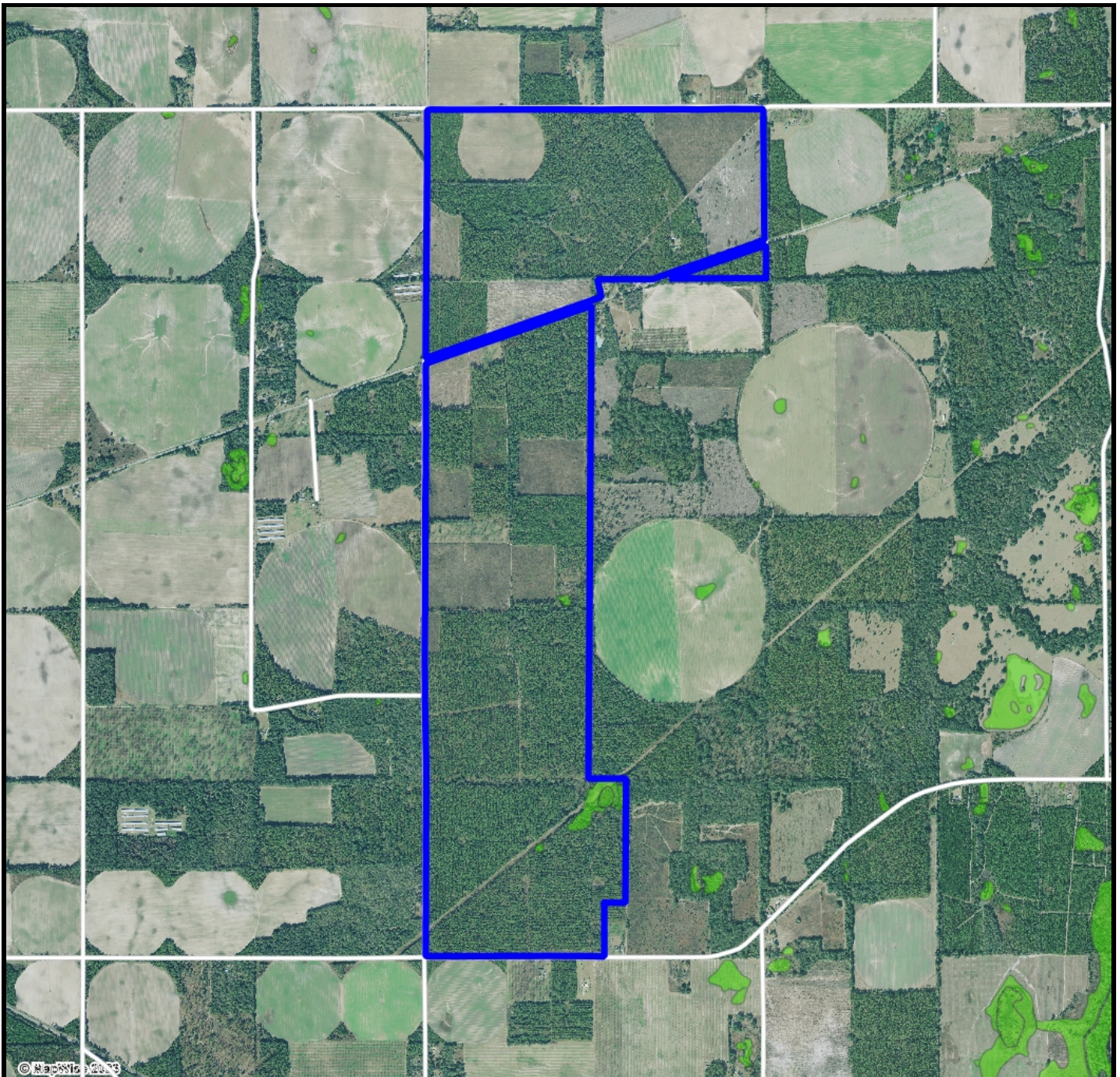


Aerial

- Polygons Drawing
- Lines Drawing
- ~ Streets OSM
- ~ Streets MapWise













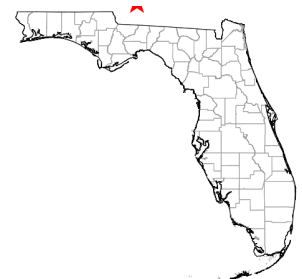
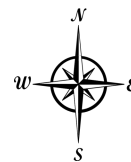
0 0.3 0.6 0.9 mi

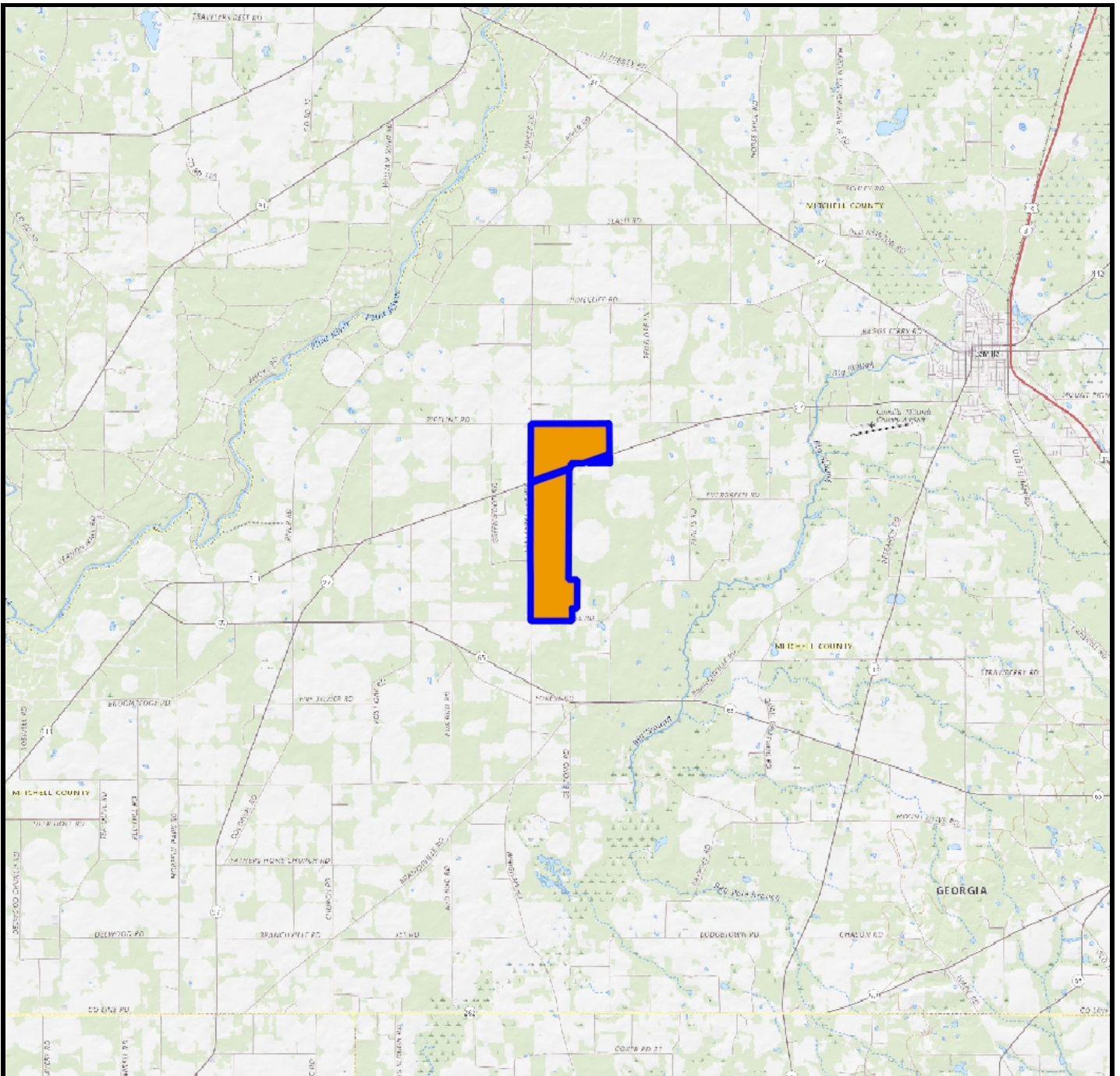


Wetlands





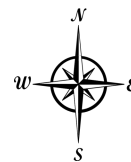
-  County Boundaries
-  Polygons Drawing
-  Lines Drawing
-  Streets OSM
-  Streets MapWise
-  Estuarine
-  Lacustrine
-  Marine
-  Palustrine
-  Riverine





Vicinity

 Polygons Drawing
 Lines Drawing



0 1 2 3 mi



For more information visit www.SVNsaunders.com

HEADQUARTERS

1723 Bartow Rd
Lakeland, FL 33801
863.648.1528

ORLANDO

605 E Robinson Street, Suite 410
Orlando, Florida 32801
386.438.5896

NORTH FLORIDA

356 NW Lake City Avenue
Lake City, Florida 32055
352.364.0070

GEORGIA

218 W Jackson Street, Suite 203
Thomasville, Georgia 31792
229.299.8600

©2023 SVN | Saunders Ralston Dantzler Real Estate. All SVN® Offices Independently Owned and Operated SVN | Saunders Ralston Dantzler Real Estate is a full-service land and commercial real estate brokerage with over \$3 billion in transactions representing buyers, sellers, investors, institutions, and landowners since 1996. We are recognized nationally as an authority on all types of land, including agriculture, ranch, recreation, residential development, and international properties. Our commercial real estate services include marketing, property management, leasing and tenant representation, valuation, business brokerage, and advisory and counseling services for office, retail, industrial, and multi-family properties. Our firm also features an auction company, forestry division, international partnerships, hunting lease management, and extensive expertise in conservation easements. Located at the center of Florida's I-4 corridor, we provide proven leadership and collaborative expertise backed by the strength of the SVN® global platform. To learn more, visit SVNsaunders.com.

