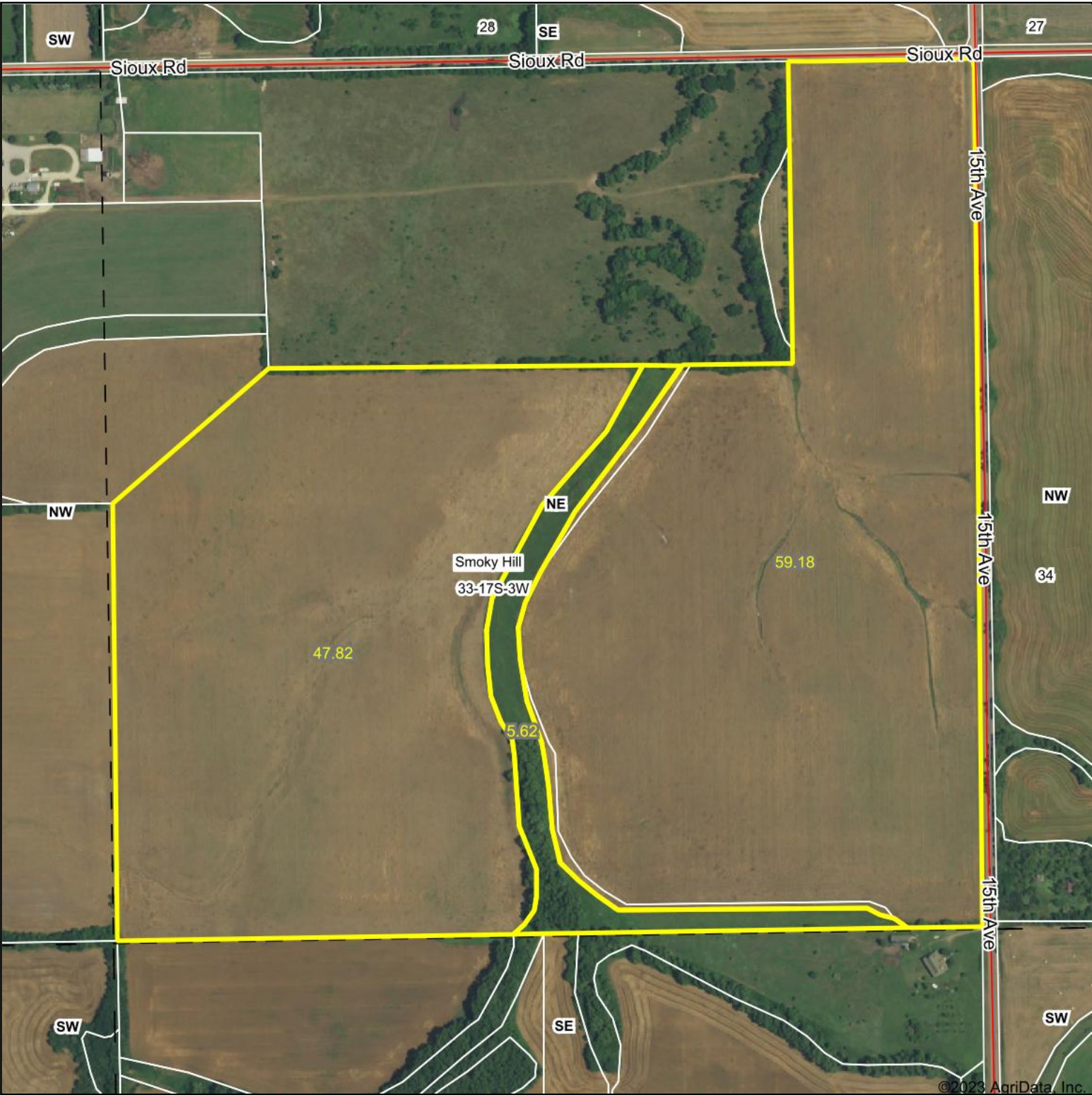



Aerial Map







COLDWELL BANKER
APW REALTORS®

Boundary Center: 38° 31' 58.02, -97° 39' 10.18


33-17S-3W
McPherson County
Kansas

0ft 471ft 943ft



10/2/2023

Maps Provided By:



surety®
CUSTOMIZED ONLINE MAPPING

© AgriData, Inc. 2023 www.AgriDataInc.com

Field borders provided by Farm Service Agency as of 5/21/2008