

# Middle Cypress Haven | 341 ± Acres



## For Sale

\$2,050,910

## About the Property

This 341± acre property is located just 10 minutes north of Florence, Alabama and consists of a mix of mature timberland and income producing farmland. There are approximately 130 tillable acres that currently have soybeans planted. The parcel located on the eastside of State Highway 157 is 71.8 acres and has huge potential for a residential development with access from both State Highway 157 and County Road 11. Moving back across to the west side of Highway 157, the property includes two creeks: Middle Cypress Creek and Oakley Springs Branch. Middle Cypress Creek runs year-round giving the property lots of recreational opportunities. There is an abundant amount of wildlife on the property and being in an area known for hunting and fishing this is truly an outdoorsman's dream. This property also has quite a history being the home to the Casey Cemetery where several members of the family currently lay at rest. At the seller's request, all potential buyers need to be accompanied by a licensed real estate agent. Let us know and we'll be happy to show you this beautiful property.

## Facts and Features

Lauderdale County, Alabama

0 AL-157, Florence, AL 35633

341 ± Acres

Best Use: Farm, Residential, Recreational

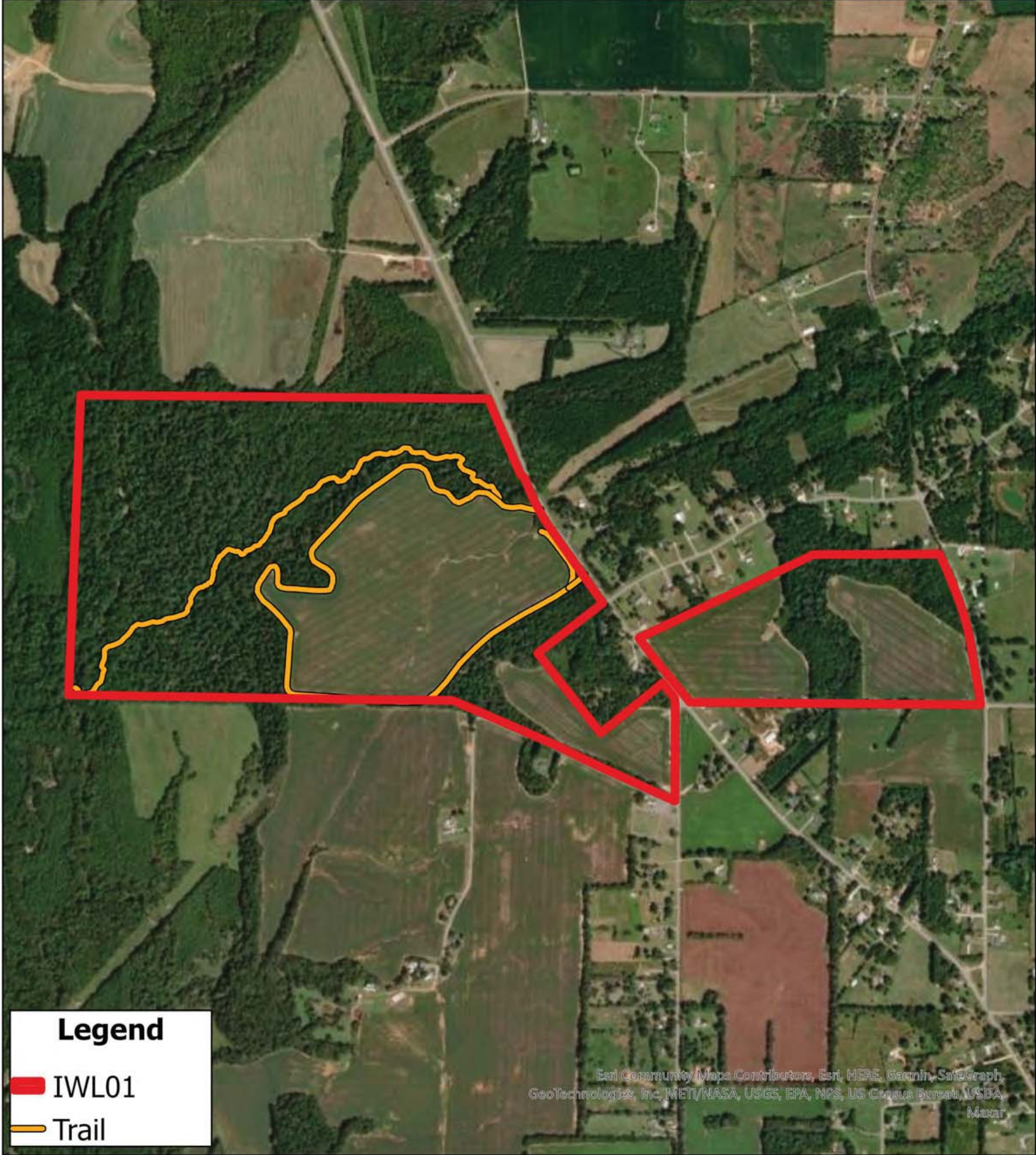


**SOUTH MAIN  
LAND REALTY**

**Hayden Reed**

Office: (256) 383-8990 | Cell: (256) 740-2494  
soldbyhayden@southmainrealty.com

Stephan Tomlinson, Broker



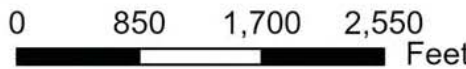
**Legend**

-  IWL01
-  Trail

Esri Community Maps Contributors, Esri, HERE, Garmin, SafeGraph, GeoTechnologies, Inc, MET/NASA, USGS, EPA, NPS, US Census Bureau, USDA, Maxar

IWL01d  
Lauderdale County, AL  
Aerial

South Main Realty  
(256) 383-2990





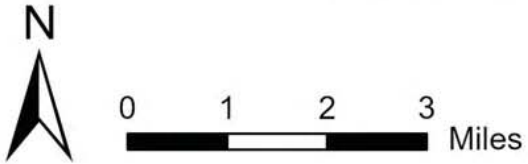


**Legend**

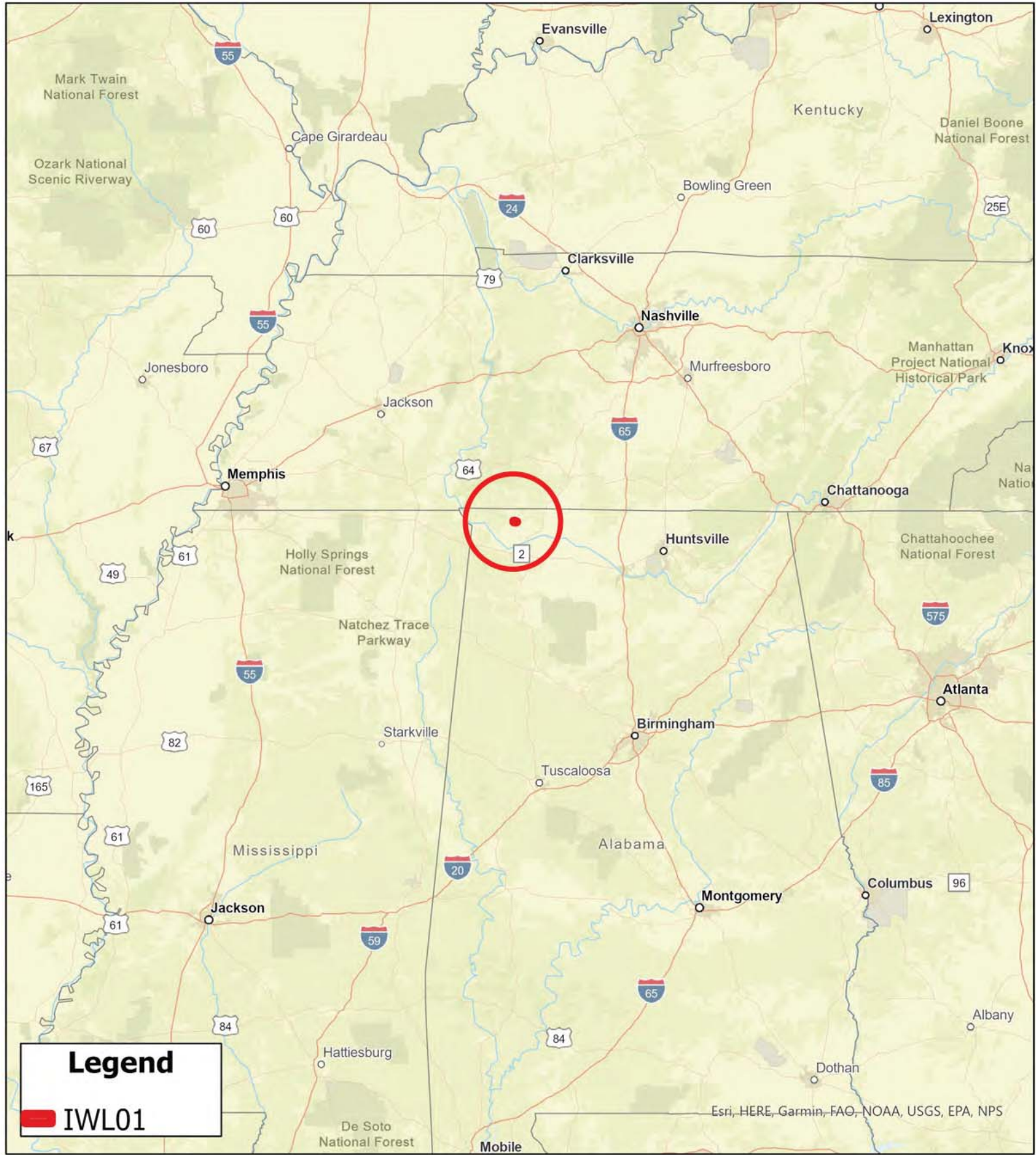
█ IWL01

**IWL01**  
**Lauderdale County, AL**  
**Local Roads**

South Main Realty  
 (256) 383-2990



Esri, HERE, Garmin, SafeGraph, GeoTechnologies, Inc, METI/NASA, USGS, EPA, NPS, USDA



**IWL01**  
**Lauderdale County, AL**  
**General Area**

South Main Realty  
(256) 383-2990

