



TRACT 1 - 10± ACRES

50008

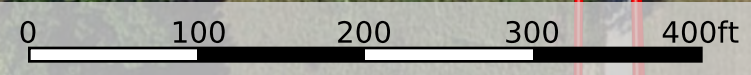
60267

50008

60127

60127

50009



mapbox

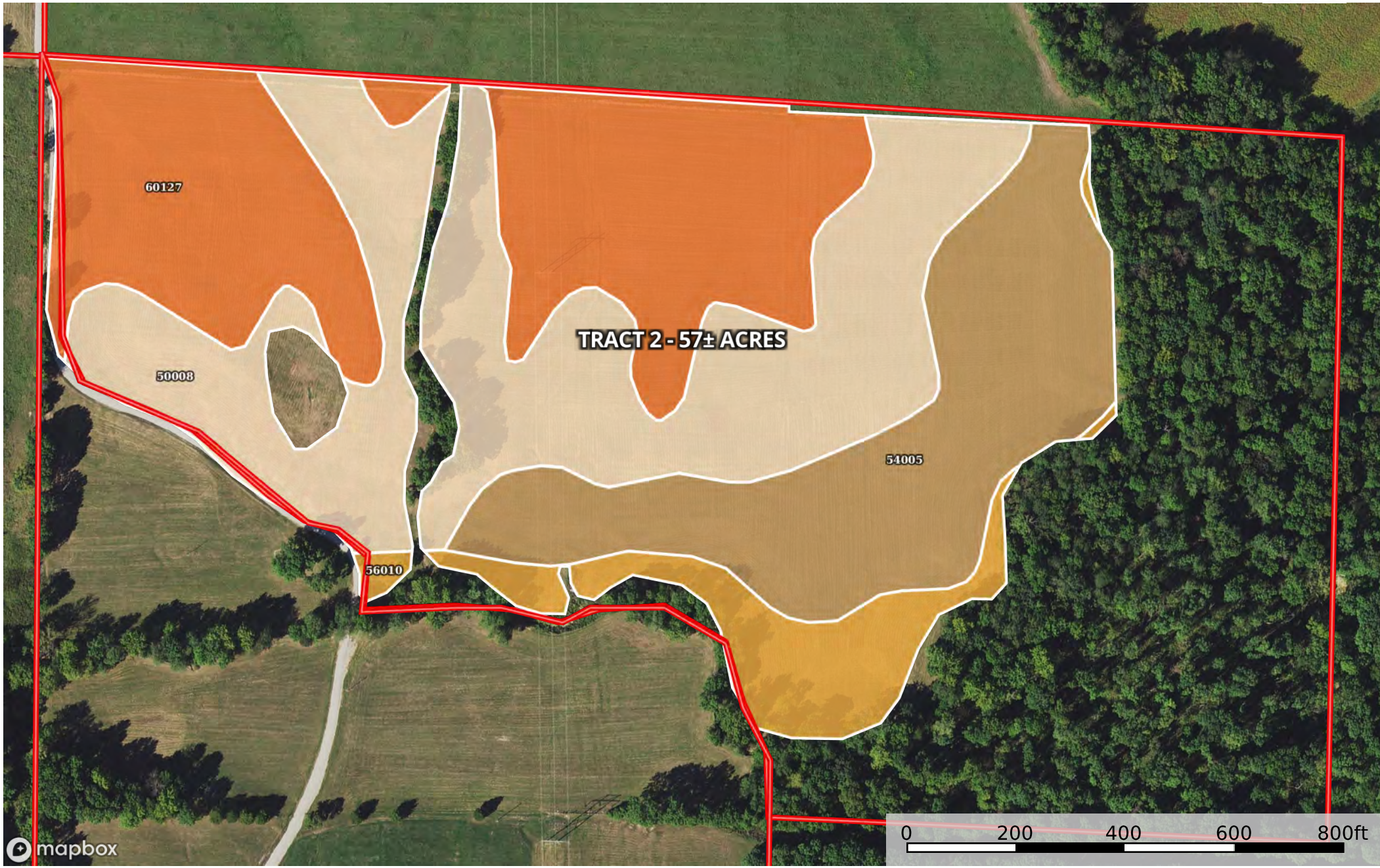
Boundary

|  Boundary 8.92 ac

SOIL CODE	SOIL DESCRIPTION	ACRES	%	CPI	NCCPI	CAP
60127	Hatton silt loam, 3 to 9 percent slopes	4.03	45.18	0	59	3e
50008	Keswick silt loam, 5 to 9 percent slopes, eroded	3.16	35.43	0	59	3e
60267	Marion silt loam, 0 to 2 percent slopes	1.7	19.06	0	55	2w
50009	Keswick silt loam, 9 to 14 percent slopes, eroded	0.03	0.34	0	51	4e
TOTALS		8.92(*)	100%	-	58.21	2.81

(*) Total acres may differ in the second decimal compared to the sum of each acreage soil. This is due to a round error because we only show the acres of each soil with two decimal.





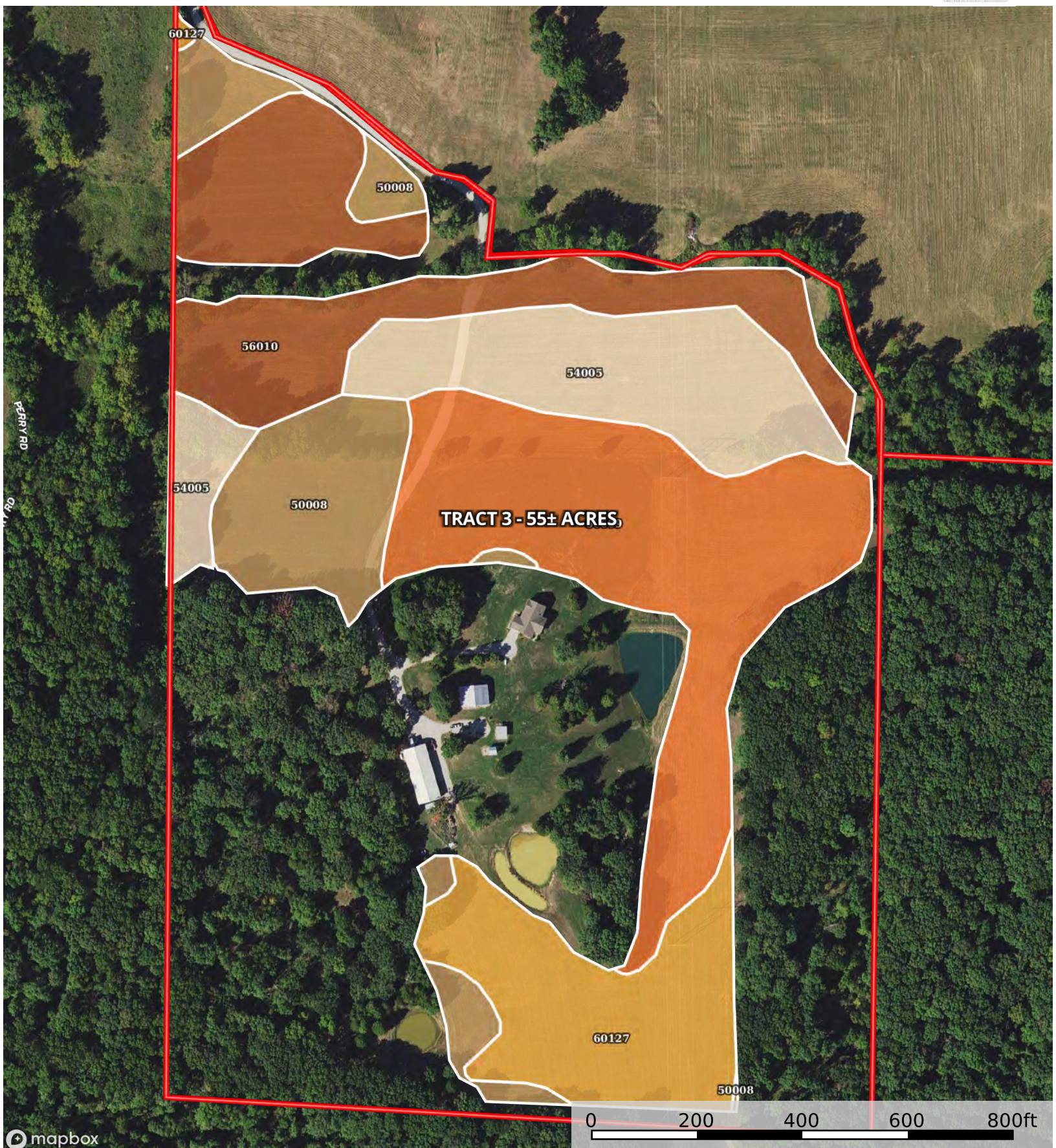
mapbox

Boundary

SOIL CODE	SOIL DESCRIPTION	ACRES	%	CPI	NCCPI	CAP
50008	Keswick silt loam, 5 to 9 percent slopes, eroded	13.47	36.78	0	59	3e
60127	Hatton silt loam, 3 to 9 percent slopes	11.79	32.2	0	59	3e
54005	Twomile silt loam, 0 to 2 percent slopes, rarely flooded	8.36	22.83	0	63	3w
56010	Belknap silt loam, 0 to 2 percent slopes, frequently flooded	3.01	8.22	0	65	3w
TOTALS		36.63(*)	100%	-	60.42	3.0

(*) Total acres may differ in the second decimal compared to the sum of each acreage soil. This is due to a round error because we only show the acres of each soil with two decimal.





mapbox

Boundary

SOIL CODE	SOIL DESCRIPTION	ACRES	%	CPI	NCCPI	CAP
50009	Keswick silt loam, 9 to 14 percent slopes, eroded	7.97	29.05	0	51	4e
56010	Belknap silt loam, 0 to 2 percent slopes, frequently flooded	6.06	22.08	0	65	3w
54005	Twomile silt loam, 0 to 2 percent slopes, rarely flooded	4.93	17.97	0	63	3w
50008	Keswick silt loam, 5 to 9 percent slopes, eroded	4.29	15.63	0	59	3e
60127	Hatton silt loam, 3 to 9 percent slopes	4.17	15.2	0	59	3e
TOTALS		27.42(*)	100%	-	58.68	3.29

(*) Total acres may differ in the second decimal compared to the sum of each acreage soil. This is due to a round error because we only show the acres of each soil with two decimal.

