



**T R O P H Y**  
PROPERTIES AND AUCTION  
LAND | RECREATIONAL | RESIDENTIAL

# 1,500 SF Commercial Property Lease - St. Charles County

www.TrophyPA.com • (855) 573-5263 • leads@trophy.com



**PROPERTY ADDRESS:**

1834 West Pearce Blvd  
Wentzville, MO 63385

**LEASE PRICE:** \$1,750/mo

**LEASE TERMS:** NNN, Term Negotiable

**ACRES:** 1.18

**PROPERTY FEATURES:**

- 1,500 Sq. Ft. Office Space
- Reception Area
- 4 Private Offices
- Break/Meeting Room
- I-70 Visibility

**PROPERTY DESCRIPTION:**

1,500 Sq. Ft. office space available for lease along I-70 corridor in booming Wentzville. This space is in great shape with 4 large private offices, a large reception area, with additional meeting or break room space. This would be perfect for professional services like a CPA or finance professionals, title office, etc. or make the space fit your needs with a build out. Owner negotiable on lease length and build out cost-share. Lease info: NNN, Term negotiable, Build out negotiable.



**PRESENTED BY:**

**PAUL DILLER**

**Land & Home Specialist - MO**

M: (636) 262-6352

P: (855) 573-5263 x742

E: pdiller@trophy.com

**Trophy Properties and Auction**

15480 Clayton Road

Suite 101

Ballwin, MO 63011

www.Trophy.com

leads@trophy.com

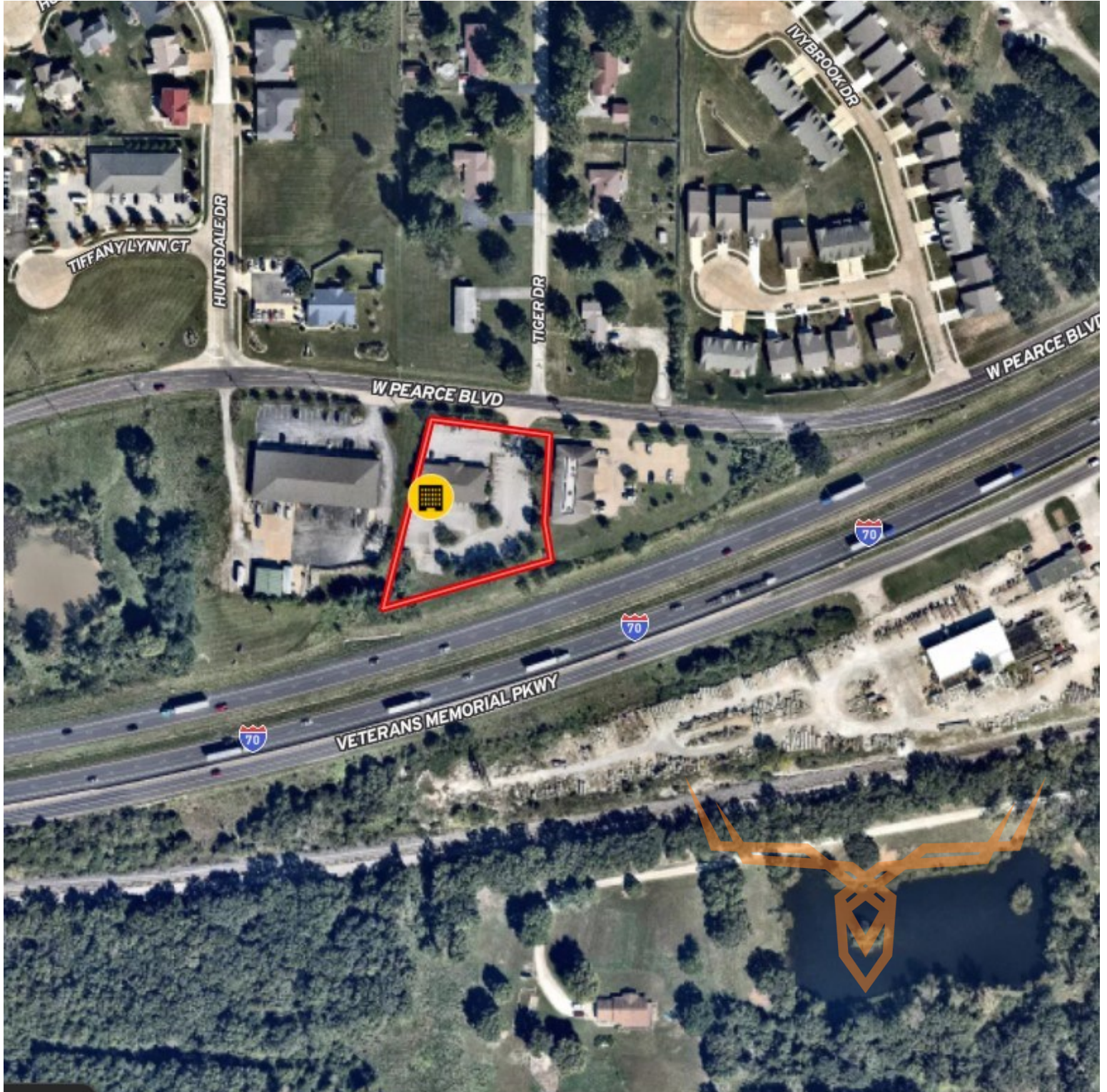




**T R O P H Y**  
PROPERTIES AND AUCTION  
LAND | RECREATIONAL | RESIDENTIAL

# 1,500 SF Commercial Property Lease - St. Charles County

[www.TrophyPA.com](http://www.TrophyPA.com) • (855) 573-5263 • [leads@trophy.com](mailto:leads@trophy.com)



Broker does not guarantee the accuracy of sq. ft., lot size, or other information, buyer is advised to independently verify the accuracy of information through personal inspection and with appropriate professionals