

Indian Trail Golf Club
238.0+/- Acres – 18 Holes & Clubhouse
1304 Willis Street, Batesburg-Leesville
Lexington County, SC



Southeastern Land Brokerage, LLC
South Carolina - North Carolina - Georgia - Arkansas

O. Max Nelson, Broker
C: 803.404.8351
Max@selandbrokerage.com

1224 Pickens Street #200
Columbia SC 29201
www.selandbrokerage.com

Property Summary for Indian Trail Golf Club, Batesburg-Leesville, Lexington County, SC

Asking Price:	\$2,750,000.00
Address:	1304 Willis Street, Batesburg-Leesville, SC 29006
Road Frontage:	1,367+ ft
TMS #:	008100-04-008 and 061
Property Type:	Golf Course – Residential Development Potential
Tax District:	03
Zoning:	Rural Agricultural and Industrial (Partial)
Sewer Connection:	Septic
Water Connection:	Private Well
Electricity:	On Site
Acreage:	238.0 +/-
Deed Book/Page:	0090-0396

Located just minutes from I-20 in Lexington County, SC is the Indian Trail Golf Club. This public course offers 18 challenging holes with a par 72 and length coming in at 6,272 yards. The course was built in 1993 by the current owner, Mr. Rudy Raborn of Batesburg-Leesville. The club offers golf carts, pull carts and rental clubs. There is also a driving range on site for your practice shots or to warm up pre-round, chipping area and putting green is available as well. This offering has potential for complete redevelopment of the golf course to include a residential component that is not presently available on the course. Additional undeveloped acreage on site will allow for further expansion of homes, golf holes or both. Come see all the potential available in this unique opportunity. Please direct all questions/queries to O. Max Nelson.

****DO NOT CONTACT THE CLUBHOUSE DIRECTLY REGARDING SALES INFO, THE CLUB IS LEASED.****



Southeastern Land Brokerage, LLC
South Carolina - North Carolina - Georgia - Arkansas



Indian Trail Golf Club

Batesburg-Leesville

1304 Willis Street, Batesburg-Leesville, SC, USA

\$2,750,000.00

Southeastern Land Brokerage

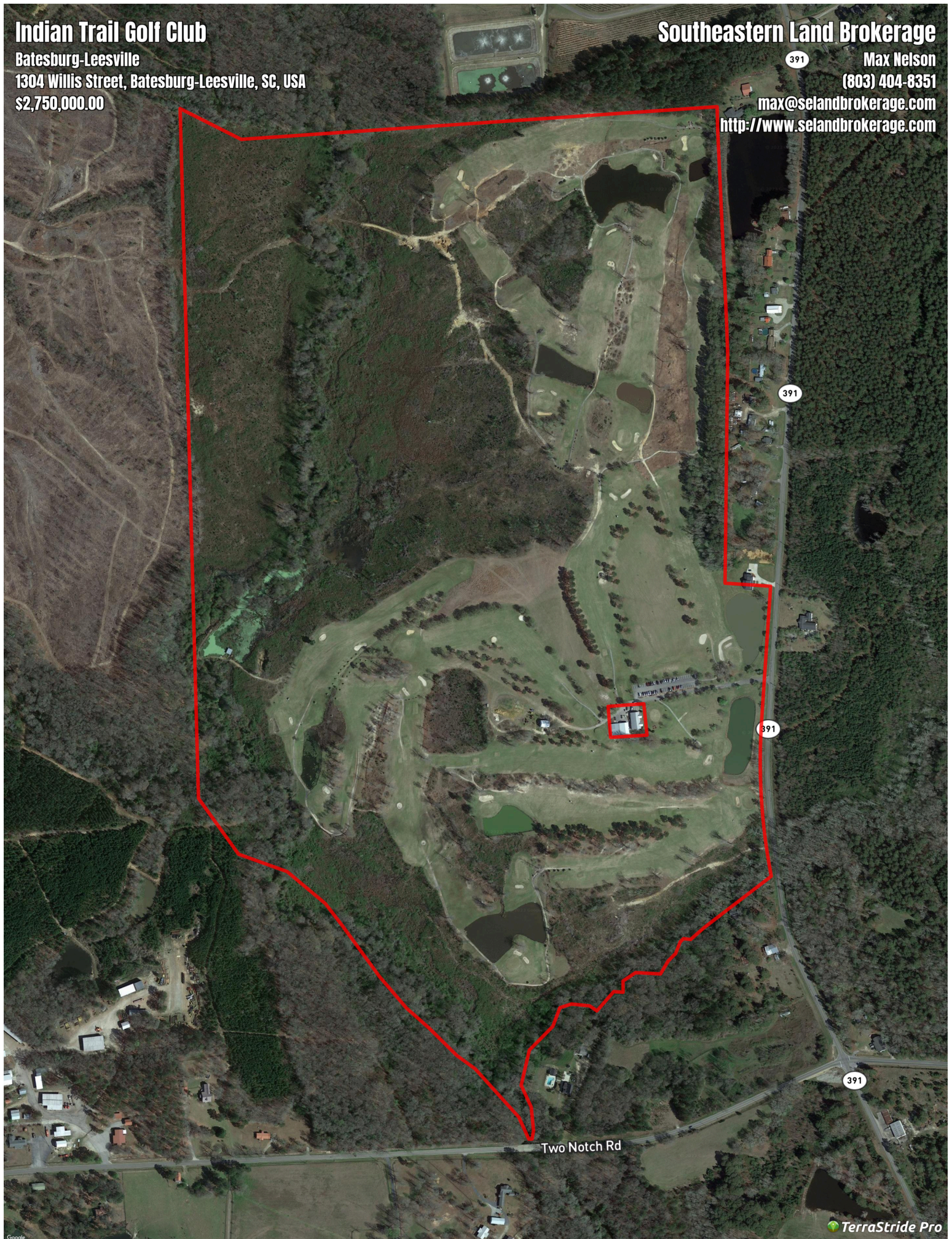
391

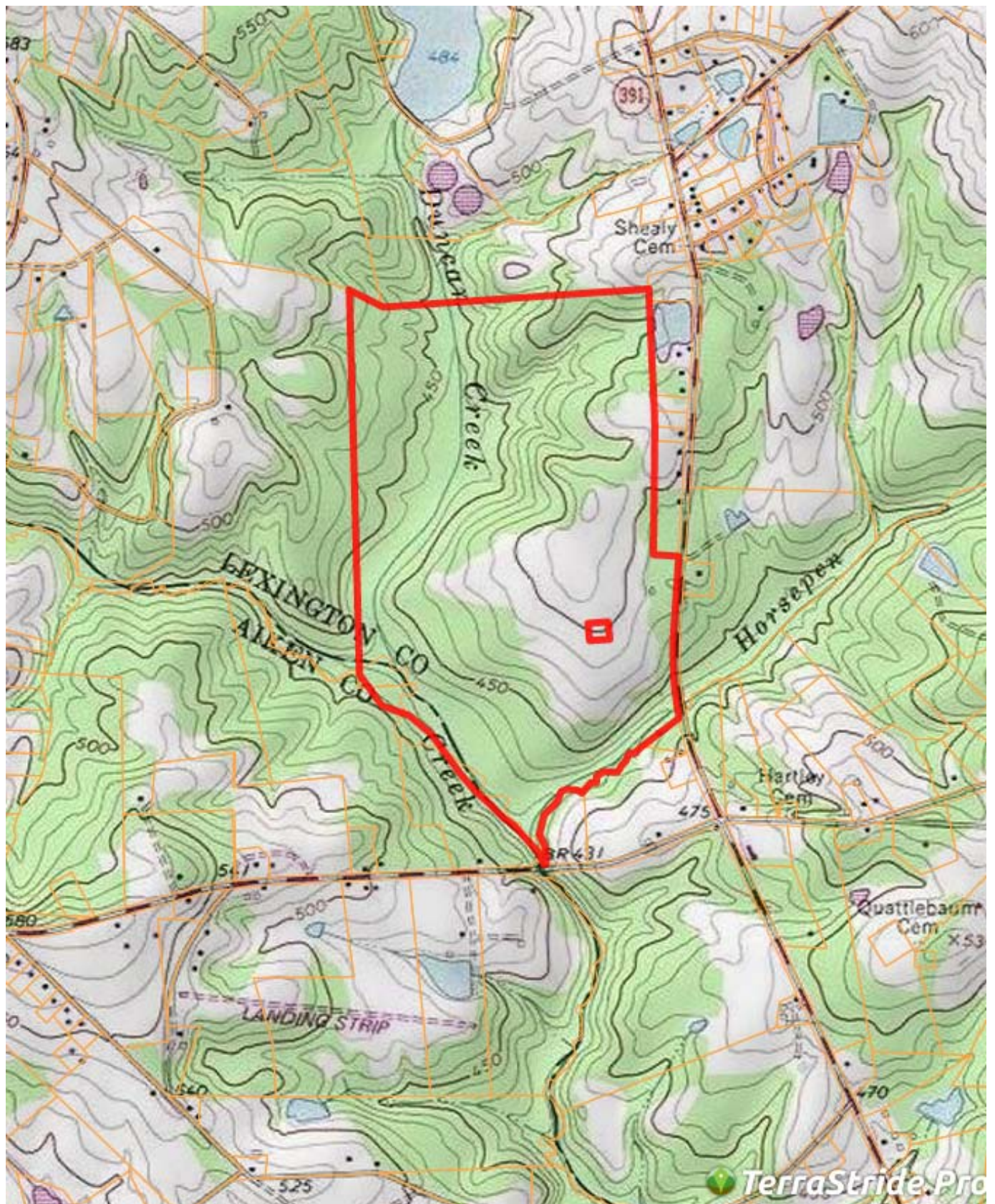
Max Nelson

(803) 404-8351

max@selandbrokerage.com

<http://www.selandbrokerage.com>





Southeastern Land Brokerage, LLC
South Carolina - North Carolina - Georgia - Arkansas

This property is proudly marketed by...



Thank you for taking time to review this opportunity in Lexington County, SC. Please feel free to contact me for more information or to schedule a private viewing. I am always available.

O. Max Nelson

(803) 404-8351

Max@selandbrokerage.com